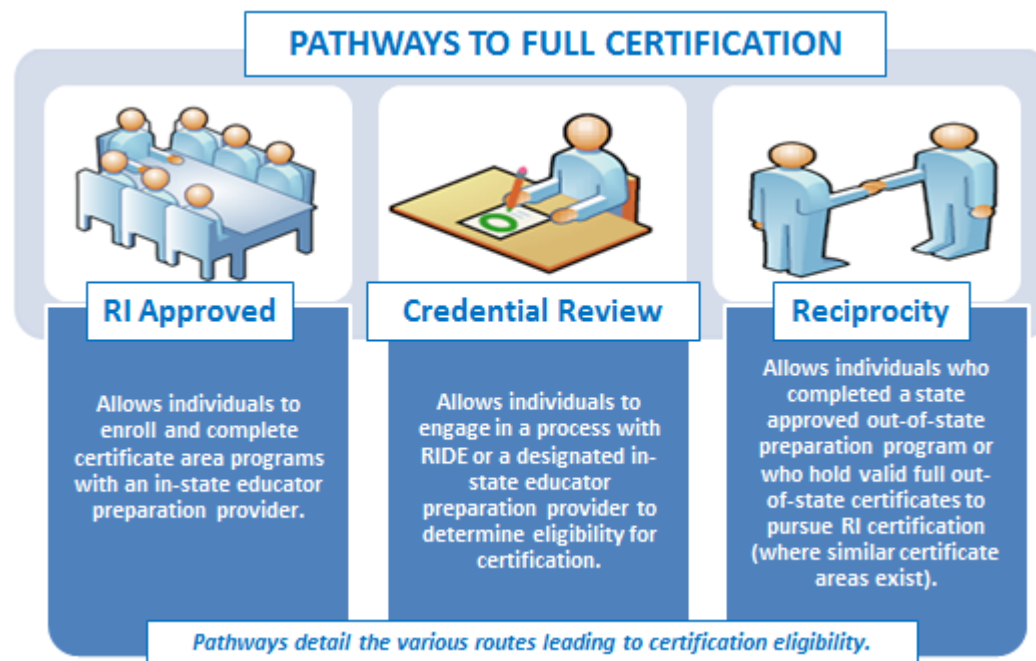




## Requirements for Full Certification - Support Professional

Applicants must satisfy all requirements in the following table for the certificate area(s) they are seeking.<sup>1</sup> The table includes details for each certificate area including the specific area, valid assignment details, available pathways, specific criteria, and required assessment(s). All support professional certificate areas require the applicant to hold an advanced degree from a regionally accredited institution.

*Note: Applicants prepared in a program where the language of instruction was not English must achieve a passing score of 64 on the Versant Pro Speaking and Writing English assessments. Additionally, dependent certificate areas are noted with an asterisk (\*) and specify the prerequisite certificate (within the criteria).*



### Certificate Areas

School Counselor .....	2
School Psychologist.....	2
School Social Worker .....	3
Speech & Language Pathologist.....	3
Registered School Nurse .....	4
Reading Specialist/Consultant* .....	4
Math Specialist/Consultant* .....	5
English to Speakers of Other Languages Specialist/Consultant* .....	5
English to Speakers of Other Languages Specialist/Consultant* (RIDE Credential Review).....	6
Instructional Leader* .....	6

<sup>1</sup> RI full certification demonstrates that an educator has met all RI certification requirements. RI full certification types include Initial, Professional, and Advanced certificates (all of which are multi-year certificates). RI full certification is comparable to National Association of State Directors of Teacher Education and Certification (NASDTEC) stage three or higher certificates and is recognized by other states for certificate reciprocity. RI full certification does not include preliminary certificates. Individuals pursuing their first full certificate should apply for their Initial certificate.



## Requirements for Full Certification - Support Professional

CERTIFICATE & ASSIGNMENT	PATHWAYS & CRITERIA	ASSESSMENT
<p><b>School Counselor (13001)</b></p> <p><i>Valid for assignment as a School Counselor in grades PK - 12 in RI public schools</i></p>	<p><b><u>PATHWAYS:</u></b></p> <ul style="list-style-type: none"> <li>▪ RI Approved Program and Reciprocity</li> </ul> <p><b><u>CRITERIA:</u></b></p> <ul style="list-style-type: none"> <li>▪ Completion of 300-hour internship</li> <li>▪ Demonstration of meeting the content competencies as prescribed by the Council for the Accreditation of Counseling and Related Education Programs (CACREP)</li> <li>▪ Advanced degree from a regionally accredited institution</li> <li>▪ Met all pedagogy and subject matter testing requirements for this certification area</li> </ul>	<p>Review the <a href="#">required tests</a> document and Go to <a href="http://www.ets.org">www.ets.org</a> for test registration, date, and locations</p>
<p><b>School Psychologist (13002)</b></p> <p><i>Valid for assignment as a School Psychologist in grades PK - 12 in RI public schools</i></p>	<p><b><u>PATHWAYS:</u></b></p> <ul style="list-style-type: none"> <li>▪ RI Approved Program and Reciprocity</li> </ul> <p><b><u>CRITERIA:</u></b></p> <ul style="list-style-type: none"> <li>▪ Advanced degree in School Psychology from a regionally accredited institution</li> <li>▪ Demonstration of meeting the content competencies as prescribed by the National Association of School Psychologists (NASP)</li> <li>▪ Met all pedagogy and subject matter testing requirements for this certification area</li> </ul>	<p>Review the <a href="#">required tests</a> document and Go to <a href="http://www.ets.org">www.ets.org</a> for test registration, date, and locations</p>



## Requirements for Full Certification - Support Professional

CERTIFICATE & ASSIGNMENT	PATHWAYS & CRITERIA	ASSESSMENT
<p><b>School Social Worker (13003)</b></p> <p><i>Valid for assignment as a School Social Worker in grades PK - 12 in RI public schools</i></p>	<p><b><u>PATHWAYS:</u></b></p> <ul style="list-style-type: none"> <li>▪ RI Approved Program and Reciprocity</li> </ul> <p><b><u>CRITERIA:</u></b></p> <ul style="list-style-type: none"> <li>▪ Master's degree in Social Work from a regionally accredited institution</li> <li>▪ Demonstration of meeting the content competencies as prescribed by the National Association of Social Workers (NASW)</li> <li>▪ Licensed as a Clinical Social Worker by RI Board of Registration for Social Workers</li> </ul>	<p>N/A</p>
<p><b>Speech &amp; Language Pathologist (13004)</b></p> <p><i>Valid for assignment as a Speech and Language Pathologist in grades PK - 12 in RI public schools</i></p>	<p><b><u>PATHWAYS:</u></b></p> <ul style="list-style-type: none"> <li>▪ RI Approved Program and Reciprocity</li> </ul> <p><b><u>CRITERIA:</u></b></p> <ul style="list-style-type: none"> <li>▪ Advanced degree from a regionally accredited institution in Speech and Language Pathology</li> <li>▪ Demonstration of meeting the content competencies as prescribed by the American Speech-Language-Hearing Association (ASHA)</li> <li>▪ Met all pedagogy and subject matter testing requirements for this certification area</li> </ul>	<p>Review the <a href="#">required tests</a> document and Go to <a href="http://www.ets.org">www.ets.org</a> for test registration, date, and locations.</p>



## Requirements for Full Certification - Support Professional

CERTIFICATE & ASSIGNMENT	PATHWAYS & CRITERIA	ASSESSMENT
<p><b>RIDE CREDENTIAL REVIEW</b>  <b>Registered School Nurse</b>  <b>(13005)</b></p> <p><i>Valid for assignment as a Registered School Nurse in grades PK - 12 in Rhode Island public schools</i></p> <p><i>Individuals who hold this certificate are not eligible to serve as teachers of record</i></p>	<p><b>PATHWAYS:</b></p> <ul style="list-style-type: none"> <li>▪ Credential Review: RIDE</li> </ul> <p><b>EXPERIENCE:</b> 3 years of documented experience as a professional nurse</p> <p><b>CRITERIA:</b></p> <ul style="list-style-type: none"> <li>▪ Bachelor’s degree from a regionally accredited institution</li> <li>▪ Current Rhode Island Nursing License</li> </ul> <p><b>RENEWAL:</b>            During the first renewal cycle from Initial to Professional level certification, individuals must complete professional learning units in the following:</p> <ul style="list-style-type: none"> <li>▪ School-based nursing procedures</li> <li>▪ Child and adolescent development</li> <li>▪ Supports for student learning needs</li> </ul>	<p style="text-align: center;">N/A</p>
<p><b>Reading Specialist/Consultant*</b>  <b>(13011)</b></p> <p><i>Valid for assignment as a Reading Specialist/Consultant in grades PK - 12 in RI public schools</i></p>	<p><b>PATHWAYS:</b></p> <ul style="list-style-type: none"> <li>▪ RI Approved Program, Credential Review: CRCI, and Reciprocity</li> </ul> <p><b>CERTIFICATE:</b> Hold any full RI teaching certificate  <b>EXPERIENCE:</b> 3 years teaching experience  <b>CRITERIA:</b></p> <ul style="list-style-type: none"> <li>▪ Advanced degree from a regionally accredited institution</li> <li>▪ Completion of 300-hour internship</li> <li>▪ Demonstration of meeting the content competencies as prescribed by the International Reading Association (IRA)</li> <li>▪ Met all pedagogy and subject matter testing requirements for this certification area</li> </ul>	<p>Review the <a href="#">required tests</a> document and Go to <a href="http://www.ets.org">www.ets.org</a> for test registration, date, and locations</p>



## Requirements for Full Certification - Support Professional

CERTIFICATE & ASSIGNMENT	PATHWAYS & CRITERIA	ASSESSMENT
<p><b>Math Specialist/Consultant* (13012)</b></p> <p><i>Valid for assignment as a Mathematics Specialist/Consultant in grades PK - 12 in RI public schools</i></p>	<p><b>PATHWAYS:</b></p> <ul style="list-style-type: none"> <li>▪ Reciprocity**</li> </ul> <p><b>CERTIFICATE:</b> Hold any full RI teaching certificate</p> <p><b>EXPERIENCE:</b> 3 years teaching experience</p> <p><b>CRITERIA:</b></p> <ul style="list-style-type: none"> <li>▪ Advanced degree from a regionally accredited institution</li> <li>▪ Completion of 300-hour internship</li> <li>▪ Demonstration of meeting the content competencies as prescribed by Association of Mathematics Teacher Educators (AMTE) for an Elementary Specialist</li> </ul> <p>**Currently, Rhode Island does not have a state-approved program for this certificate area. Candidates can apply for this certificate only through reciprocity.</p>	<p>N/A</p>
<p><b>English to Speakers of Other Languages Specialist/Consultant* (13013)</b></p> <p><i>Valid for assignment as a English as a Second Language Specialist/Consultant in grades PK - 12 in RI public schools</i></p>	<p><b>PATHWAYS:</b></p> <ul style="list-style-type: none"> <li>▪ Credential Review: RIDE (<a href="#">see below</a>), Reciprocity</li> </ul> <p><b>CERTIFICATE:</b> Hold any full RI teaching certificate</p> <p><b>EXPERIENCE:</b> 3 years teaching experience</p> <p><b>CRITERIA:</b></p> <ul style="list-style-type: none"> <li>▪ Advanced degree from a regionally accredited institution</li> <li>▪ Completion of 300-hour internship</li> <li>▪ Demonstration of meeting the field competencies as prescribed by the Teachers of English to Speakers of Other Languages (TESOL)</li> </ul>	<p>Review the <a href="#">required tests</a> document and Go to <a href="http://www.ets.org">www.ets.org</a> for test registration, date, and locations</p>



## Requirements for Full Certification - Support Professional

CERTIFICATE & ASSIGNMENT	PATHWAYS & CRITERIA	ASSESSMENT
<p><b>RIDE CREDENTIAL REVIEW</b>  <b>English to Speakers of Other Languages Specialist/Consultant* (13013)</b></p> <p><i>Valid for assignment as a English as a Second Language Specialist/Consultant in grades PK - 12 in RI public schools</i></p>	<p><b><u>CERTIFICATE:</u></b> Hold any full RI teaching certificate  <b><u>EXPERIENCE:</u></b> 3 years teaching experience  <b><u>CRITERIA:</u></b></p> <ul style="list-style-type: none"> <li>▪ Advanced degree from a regionally accredited institution</li> <li>▪ Completion of 300-hour Internship</li> <li>▪ Demonstration of meeting the field competencies as prescribed by the Teachers of English to Speakers of Other Languages (TESOL)</li> <li>▪ Not less than 24 semester hours of coursework in each of the following areas:               <ul style="list-style-type: none"> <li>○ Introduction to English Linguistics</li> <li>○ Curriculum and Methods for ESL Programs</li> <li>○ Second Language Assessments and Evaluation</li> <li>○ Socio-Cultural Foundations of ESL Education</li> <li>○ Second Language Literacy for LEP Learners</li> <li>○ Theories of First and Second Language Acquisition</li> <li>○ The Supervision of ESL Programs</li> <li>○ Identification and Service to Students with Special Needs</li> </ul> </li> </ul>	<p>Review the <a href="#">required tests</a> document and            Go to <a href="http://www.ets.org">www.ets.org</a> for test registration, date, and locations.</p>
<p><b>Instructional Leader* (13021)</b></p> <p><i>Valid for assignment as an Instructional Leader in grades PK-12 in RI Public Schools</i></p>	<p><b><u>PATHWAYS:</u></b></p> <ul style="list-style-type: none"> <li>▪ Reciprocity**</li> </ul> <p><b><u>CERTIFICATE:</u></b> Hold any full RI teaching certificate or Support Professional Certificate  <b><u>EXPERIENCE:</u></b> 3 years teaching experience  <b><u>CRITERIA:</u></b></p> <ul style="list-style-type: none"> <li>▪ Advanced degree from a regionally accredited institution</li> <li>▪ Completion of 300-hour Internship</li> <li>▪ Demonstration of meeting the content competencies as prescribed by the Teacher Leadership Exploratory Consortium</li> </ul> <p>**Currently, Rhode Island does not have a state-approved program for this certificate area. Candidates can apply for this certificate only through reciprocity.</p>	<p>N/A</p>