



## Requirements for Full Certification - Middle Grades

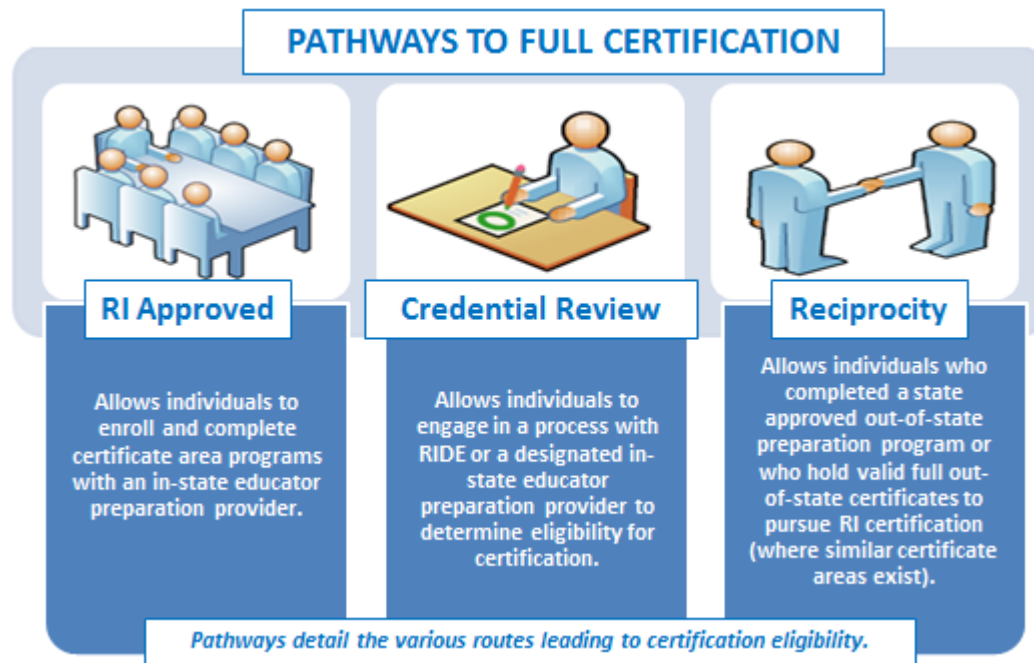
Applicants must satisfy all requirements in the following table for the certificate area(s) they are seeking<sup>1</sup>. The table includes details for each certificate area including: the specific area, valid assignment details, available pathways, specific criteria, and required assessment(s). All full teacher certificate areas require the applicant to hold a Bachelor's degree from a regionally accredited institution.

*Note: Applicants prepared in a program where the language of instruction was not English must achieve a passing score of 64 on the Versant Pro Speaking and Writing English assessments. Additionally, dependent certificate areas are noted with an asterisk (\*) and specify the prerequisite certificate (within the criteria).*

## Certificate Areas

Middle Grades English Teacher .....	2
Middle Grades English Teacher Elementary Extension* .....	2
Middle Grades English Teacher Secondary Extension* .....	3
Middle Grades Mathematics Teacher .....	3
Middle Grades Mathematics Teacher Elementary Extension * .....	4
Middle Grades Mathematics Teacher Secondary Extension * .....	4
Middle Grades Science Teacher.....	5
Middle Grades Science Teacher Elementary Extension * .....	5
Middle Grades Science Teacher Secondary Extension * .....	6

<sup>1</sup> RI full certification demonstrates that an educator has met all RI certification requirements. RI full certification types include Initial, Professional, and Advanced certificates (all of which are multi-year certificates). RI full certification is comparable to National Association of State Directors



Middle Grades Social Studies Teacher .....	6
Middle Grades Social Studies Teacher Elementary Extension* .....	7
Middle Grades Social Studies Teacher Secondary Extension* .....	7
Middle Grades Special Education Teacher .....	8
Middle Grades Bilingual Dual Language Teacher* .....	9

of Teacher Education and Certification (NASDTEC) stage three or higher certificates and is recognized by other states for certificate reciprocity. RI full certification does not include preliminary certificates. Individuals pursuing their first full certificate should apply for their Initial certificate.



## Requirements for Full Certification - Middle Grades

CERTIFICATE & ASSIGNMENT	PATHWAYS & CRITERIA	ASSESSMENT
<p><b>Middle Grades English Teacher (11301)</b></p> <p><i>Valid for assignment as a Middle Grades English teacher in grades 5 - 8 in RI public schools</i></p>	<p><b>PATHWAYS:</b></p> <ul style="list-style-type: none"> <li>▪ Reciprocity</li> </ul> <p><b>CRITERIA:</b></p> <ul style="list-style-type: none"> <li>▪ Major or equivalent in the content area or in a closely related field</li> <li>▪ Completion of a minimum of 12 weeks of student teaching in this area and a minimum of 60 hours Field experience prior to student teaching</li> <li>▪ Demonstration of meeting content and pedagogical competencies as prescribed by appropriate RIDE-approved national professional association</li> <li>▪ Demonstration of deep understanding of applicable student standards and proficiency in designing and implementing standards-based instruction and assessment</li> </ul>	<p>Review the <a href="#">required tests document</a> and Go to <a href="http://www.ets.org">www.ets.org</a> for test registration, date, and locations</p>
<p><b>Middle Grades English Teacher Elementary Extension* (11331)</b></p> <p><i>Valid for assignment as a Middle Grades English teacher in grades 5 - 8 in RI public schools</i></p>	<p><b>PATHWAYS:</b></p> <ul style="list-style-type: none"> <li>▪ RI Approved Program, Credential Review: CRCL, and Reciprocity</li> </ul> <p><b>CERTIFICATE:</b> Hold an Elementary Education Teacher (11201)</p> <p><b>CRITERIA:</b></p> <ul style="list-style-type: none"> <li>▪ 21 semester hours of coursework in English</li> <li>▪ Completion of a minimum of 45 hours of practicum</li> <li>▪ Demonstration of meeting content and pedagogical competencies as prescribed by appropriate RIDE-approved national professional association</li> <li>▪ Demonstration of deep understanding of applicable student standards and proficiency in designing and implementing standards-based instruction and assessment</li> </ul>	<p>Review the <a href="#">required tests document</a> and Go to <a href="http://www.ets.org">www.ets.org</a> for test registration, date, and locations</p>



## Requirements for Full Certification - Middle Grades

CERTIFICATE & ASSIGNMENT	PATHWAYS & CRITERIA	ASSESSMENT
<p><b>Middle Grades English Teacher Secondary Extension* (11341)</b></p> <p><i>Valid for assignment as a Middle Grades English teacher in grades 5 - 8 in RI public schools</i></p>	<p><b>PATHWAYS:</b></p> <ul style="list-style-type: none"> <li>▪ RI Approved Program, Credential Review: CRCI, and Reciprocity</li> </ul> <p><b>CERTIFICATE:</b> Hold a Secondary Grades English Teacher (11406)</p> <p><b>CRITERIA:</b></p> <ul style="list-style-type: none"> <li>▪ Completion of a minimum of 45 hours of practicum</li> <li>▪ Demonstration of meeting content and pedagogical competencies as prescribed by appropriate RIDE-approved national professional association</li> <li>▪ Demonstration of deep understanding of applicable student standards and proficiency in designing and implementing standards-based instruction and assessment</li> </ul>	<p>Review the <a href="#">required tests document</a> and Go to <a href="http://www.ets.org">www.ets.org</a> for test registration, date, and locations</p>
<p><b>Middle Grades Mathematics Teacher (11302)</b></p> <p><i>Valid for assignment as a Middle Grades Mathematics teacher in grades 5 - 8 in RI public schools</i></p>	<p><b>PATHWAYS:</b></p> <ul style="list-style-type: none"> <li>▪ Reciprocity</li> </ul> <p><b>CRITERIA:</b></p> <ul style="list-style-type: none"> <li>▪ Major or equivalent in the content area or in a closely related field</li> <li>▪ Completion of a minimum of 12 weeks of student teaching in this area and a minimum of 60 hours field experience prior to student teaching</li> <li>▪ Demonstration of meeting content and pedagogical competencies as prescribed by appropriate RIDE-approved national professional association</li> <li>▪ Demonstration of deep understanding of applicable student standards and proficiency in designing and implementing standards-based instruction and assessment</li> </ul>	<p>Review the <a href="#">required tests document</a> and Go to <a href="http://www.ets.org">www.ets.org</a> for test registration, date, and locations</p>



## Requirements for Full Certification - Middle Grades

CERTIFICATE & ASSIGNMENT	PATHWAYS & CRITERIA	ASSESSMENT
<p><b>Middle Grades Mathematics Teacher Elementary Extension *</b> <b>(11332)</b></p> <p><i>Valid for assignment as a Middle Grades Mathematics teacher in grades 5 - 8 in RI public schools</i></p>	<p><b><u>PATHWAYS:</u></b></p> <ul style="list-style-type: none"> <li>▪ RI Approved Program, Credential Review: CRCI, and Reciprocity</li> </ul> <p><b><u>CERTIFICATE:</u></b> Hold an Elementary Education Teacher (11201)</p> <p><b><u>CRITERIA:</u></b></p> <ul style="list-style-type: none"> <li>▪ 21 semester hours in Math</li> <li>▪ Completion of a minimum of 45 hours of practicum in this certification area</li> <li>▪ Demonstration of meeting content and pedagogical competencies as prescribed by appropriate RIDE-approved national professional association</li> <li>▪ Demonstration of deep understanding of applicable student standards and proficiency in designing and implementing standards-based instruction and assessment</li> </ul>	<p>Review the <a href="#">required tests</a> document and Go to <a href="http://www.ets.org">www.ets.org</a> for test registration, date, and locations</p>
<p><b>Middle Grades Mathematics Teacher Secondary Extension *</b> <b>(11342)</b></p> <p><i>Valid for assignment as a Middle Grades Mathematics teacher in grades 5 - 8 in RI public schools</i></p>	<p><b><u>PATHWAYS:</u></b></p> <ul style="list-style-type: none"> <li>▪ RI Approved Program, Credential Review: CRCI, and Reciprocity</li> </ul> <p><b><u>CERTIFICATE:</u></b> Hold a Secondary Grades Mathematics Teacher (11408)</p> <p><b><u>CRITERIA:</u></b></p> <ul style="list-style-type: none"> <li>▪ Completion of a minimum of 45 hours of practicum in this certification area</li> <li>▪ Demonstration of meeting content and pedagogical competencies as prescribed by appropriate RIDE-approved national professional association</li> <li>▪ Demonstration of deep understanding of applicable student standards and proficiency in designing and implementing standards-based instruction and assessment</li> </ul>	<p>Review the <a href="#">required tests</a> document and Go to <a href="http://www.ets.org">www.ets.org</a> for test registration, date, and locations</p>



## Requirements for Full Certification - Middle Grades

CERTIFICATE & ASSIGNMENT	PATHWAYS & CRITERIA	ASSESSMENT
<p><b>Middle Grades Science Teacher (11303)</b></p> <p><i>Valid for assignment as a Middle Grades Science teacher in grades 5 - 8 in RI public schools</i></p>	<p><b>PATHWAYS:</b></p> <ul style="list-style-type: none"> <li>▪ Reciprocity</li> </ul> <p><b>CRITERIA:</b></p> <ul style="list-style-type: none"> <li>▪ Major or Equivalent in the content area or in a closely related field</li> <li>▪ Completion of a minimum of 12 weeks of student teaching in this area and a minimum of 60 hours Field experience prior to student teaching</li> <li>▪ Demonstration of meeting content and pedagogical competencies as prescribed by appropriate RIDE-approved national professional association</li> <li>▪ Demonstration of deep understanding of applicable student standards and proficiency in designing and implementing standards-based instruction and assessment</li> </ul>	<p>Review the <a href="#">required tests</a> document and Go to <a href="http://www.ets.org">www.ets.org</a> for test registration, date, and locations</p>
<p><b>Middle Grades Science Teacher Elementary Extension * (11333)</b></p> <p><i>Valid for assignment as a Middle Grades Science teacher in grades 5 - 8 in RI public schools</i></p>	<p><b>PATHWAYS:</b></p> <ul style="list-style-type: none"> <li>▪ RI Approved Program, Credential Review: CRCI, and Reciprocity</li> </ul> <p><b>CERTIFICATE:</b> Hold an Elementary Education Teacher (11201)</p> <p><b>CRITERIA:</b></p> <ul style="list-style-type: none"> <li>▪ 21 semester hours in Science with coursework in three science areas</li> <li>▪ Completion of a minimum of 45 hours of practicum</li> <li>▪ Demonstration of meeting content and pedagogical competencies as prescribed by appropriate RIDE-approved national professional association</li> <li>▪ Demonstration of deep understanding of applicable student standards and proficiency in designing and implementing standards-based instruction and assessment</li> </ul>	<p>Review the <a href="#">required tests</a> document and Go to <a href="http://www.ets.org">www.ets.org</a> for test registration, date, and locations</p>



## Requirements for Full Certification - Middle Grades

CERTIFICATE & ASSIGNMENT	PATHWAYS & CRITERIA	ASSESSMENT
<p><b>Middle Grades Science Teacher Secondary Extension *</b> <b>(11343)</b></p> <p><i>Valid for assignment as a Middle Grades Science teacher in grades 5 - 8 in RI public schools</i></p>	<p><b>PATHWAYS:</b></p> <ul style="list-style-type: none"> <li>▪ RI Approved Program, Credential Review: CRCI, and Reciprocity</li> </ul> <p><b>CERTIFICATE:</b> Hold any Secondary Grades Science Certificate</p> <p><b>CRITERIA:</b></p> <ul style="list-style-type: none"> <li>▪ Completion of a minimum of 45 hours of practicum</li> <li>▪ Demonstration of meeting content and pedagogical competencies as prescribed by appropriate RIDE-approved national professional association</li> <li>▪ Demonstration of deep understanding of applicable student standards and proficiency in designing and implementing standards-based instruction and assessment</li> </ul>	<p>Review the <a href="#">required tests</a> document and Go to <a href="http://www.ets.org">www.ets.org</a> for test registration, date, and locations</p>
<p><b>Middle Grades Social Studies Teacher</b> <b>(11304)</b></p> <p><i>Valid for assignment as a Middle Grades Social Studies teacher in grades 5 - 8 in RI public schools</i></p>	<p><b>PATHWAYS:</b></p> <ul style="list-style-type: none"> <li>▪ Reciprocity</li> </ul> <p><b>CRITERIA:</b></p> <ul style="list-style-type: none"> <li>▪ Major or equivalent in the content area or in a closely related field</li> <li>▪ Completion of a minimum of 12 weeks of Student teaching in this area and a minimum of 60 hours Field experience prior to student teaching</li> <li>▪ Demonstration of meeting the Professional Competencies of the RI Professional Teaching Standards (RIPTS)</li> <li>▪ Has demonstrated content competencies as prescribed by the appropriate RIDE approved national professional associations</li> </ul>	<p>Review the <a href="#">required tests</a> document and Go to <a href="http://www.ets.org">www.ets.org</a> for test registration, date, and locations</p>



## Requirements for Full Certification - Middle Grades

CERTIFICATE & ASSIGNMENT	PATHWAYS & CRITERIA	ASSESSMENT
<p><b>Middle Grades Social Studies Teacher Elementary Extension*</b> <b>(11334)</b></p> <p><i>Valid for assignment as a Middle Grades Social Studies teacher in grades 5 - 8 in RI public schools</i></p>	<p><b>PATHWAYS:</b></p> <ul style="list-style-type: none"> <li>▪ RI Approved Program, Credential Review: CRCI, and Reciprocity</li> </ul> <p><b>CERTIFICATE:</b> Hold an Elementary Education Teacher (11201)</p> <p><b>CRITERIA:</b></p> <ul style="list-style-type: none"> <li>▪ 21 semester hours in Social Studies with coursework in history as well as areas such as anthropology, political science, and sociology</li> <li>▪ Completion of a minimum of 45 hours of practicum</li> <li>▪ Demonstration of meeting content and pedagogical competencies as prescribed by appropriate RIDE-approved national professional association</li> <li>▪ Demonstration of deep understanding of applicable student standards and proficiency in designing and implementing standards-based instruction and assessment</li> </ul>	<p>Review the <a href="#">required tests</a> document and Go to <a href="http://www.ets.org">www.ets.org</a> for test registration, date, and locations</p>
<p><b>Middle Grades Social Studies Teacher Secondary Extension*</b> <b>(11344)</b></p> <p><i>Valid for assignment as a Middle Grades Social Studies teacher in grades 5 - 8 in RI public schools</i></p>	<p><b>PATHWAYS:</b></p> <ul style="list-style-type: none"> <li>▪ RI Approved Program, Credential Review: CRCI, and Reciprocity</li> </ul> <p><b>CERTIFICATE:</b> Hold a Secondary Social Studies Teacher (11410)</p> <p><b>CRITERIA:</b></p> <ul style="list-style-type: none"> <li>▪ Completion of a minimum of 45 hours of practicum</li> <li>▪ Demonstration of meeting content and pedagogical competencies as prescribed by appropriate RIDE-approved national professional association</li> <li>▪ Demonstration of deep understanding of applicable student standards and proficiency in designing and implementing standards-based instruction and assessment</li> </ul>	<p>Review the <a href="#">required tests</a> document and Go to <a href="http://www.ets.org">www.ets.org</a> for test registration, date, and locations</p>



## Requirements for Full Certification - Middle Grades

CERTIFICATE & ASSIGNMENT	PATHWAYS & CRITERIA	ASSESSMENT
<p><b>Middle Grades Special Education Teacher (11382)</b></p> <p><i>Valid for assignment as a Middle Grades Special Education Teacher in grades 5-8 in RI public schools</i></p> <p><i>May work in a self-contained setting in the content area designated or may provide services directly to students in general education or other settings</i></p> <p><u>ASSIGNMENT NOTES:</u>  <i>Educators who hold certification in Elementary Education, Elementary Special Education, <u>and</u> Middle Grades Education in a content field are eligible for this assignment without holding the 11381 certificate</i></p> <p><i>Educators who hold certification in a Secondary Grades content field, Secondary Special Education, <u>and</u> Middle Grades content field are also eligible for this assignment without holding the 11381 certificate</i></p>	<p><b>PATHWAYS:</b></p> <ul style="list-style-type: none"> <li>▪ Credential Review: CRCI and Reciprocity</li> </ul> <p><b>CRITERIA:</b></p> <ul style="list-style-type: none"> <li>▪ Completion of 12 weeks of student teaching in this area and a minimum of 60 hours of field experience prior to student teaching</li> <li>▪ Demonstration of meeting content and pedagogical competencies as prescribed by appropriate RIDE-approved national professional association</li> <li>▪ Demonstration of deep understanding of applicable student standards and proficiency in designing and implementing standards-based instruction and assessment</li> </ul>	<p>Review the <a href="#">required tests document</a> and  Go to <a href="http://www.ets.org">www.ets.org</a> for test registration, date, and locations</p>





## Requirements for Full Certification - Middle Grades

CERTIFICATE & ASSIGNMENT	PATHWAYS & CRITERIA	ASSESSMENT
<p><b>Middle Grades Bilingual Dual Language Teacher* (11391)</b></p> <p><i>Language specific</i></p> <p><i>Valid for assignment as a Middle Grades Bilingual and Dual Language teacher in grades 5 - 8 in RI public schools</i></p> <p><u>ASSIGNMENT NOTES:</u> <i>Educators who hold certification in Elementary Education, Elementary Bilingual and Dual Language, and Middle Grades Education in a content field are eligible for this assignment without holding the 11391 certificate</i></p> <p><i>Educators who hold certification in a Secondary Grades content field, Secondary Bilingual and Dual Language, and Middle Grades content field are also eligible for this assignment without holding the 11391 certificate</i></p>	<p><b>PATHWAYS:</b></p> <ul style="list-style-type: none"> <li>▪ Reciprocity</li> </ul> <p><b>CERTIFICATE:</b> Hold a Middle Grades certificate</p> <p><b>CRITERIA:</b></p> <ul style="list-style-type: none"> <li>▪ Completion of a minimum of 45 hours of practicum</li> <li>▪ Demonstration of meeting content and pedagogical competencies as prescribed by appropriate RIDE-approved national professional association</li> <li>▪ Demonstration of deep understanding of applicable student standards and proficiency in designing and implementing standards-based instruction and assessment</li> </ul> <p><b>NOTE:</b> Educators who hold a valid Bilingual and Dual Language certificate are eligible for an English to Speakers of Other Languages certificate</p>	<p>Review the <a href="#">required tests document</a> and Go to <a href="http://www.ets.org">www.ets.org</a> for test registration, date, and locations</p>