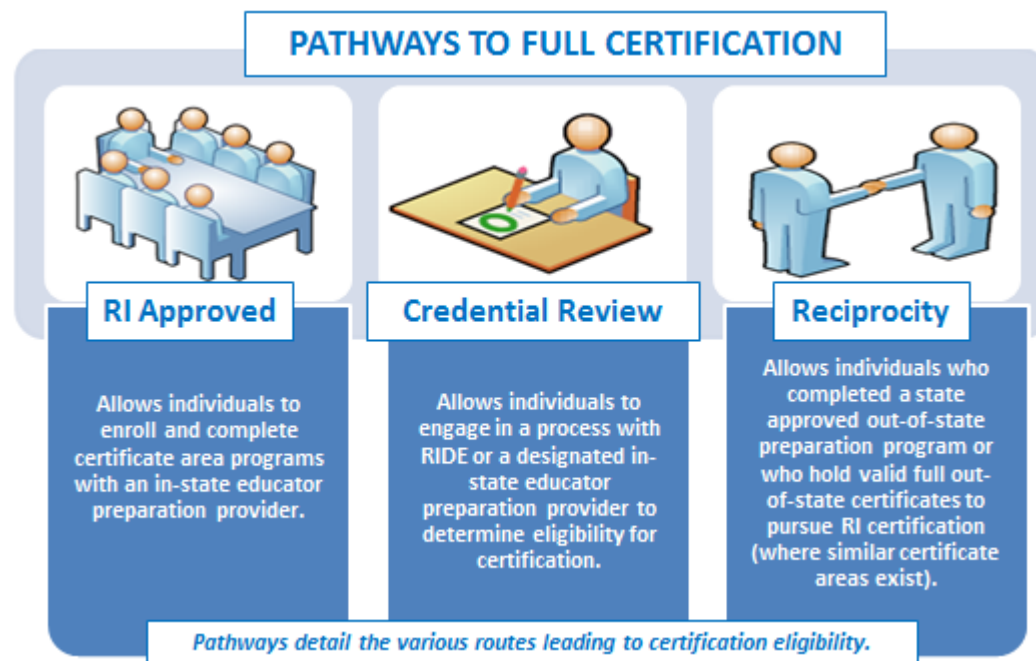




Requirements for Full Certification- Elementary Grades

Applicants must satisfy all requirements in the following table for the certificate area(s) they are seeking.¹ The table includes details for each certificate area including the specific area, valid assignment details, available pathways, specific criteria, and required assessment(s). All full teacher certificate areas require the applicant to hold a Bachelor’s degree from a regionally accredited institution.

Note: Applicants prepared in a program where the language of instruction was not English must achieve a passing score of 64 on the Versant Pro Speaking and Writing English assessments. Additionally, dependent certificate areas are noted with an asterisk (*) and specify the prerequisite certificate (within the criteria).



Certificate Areas

Elementary Education Teacher	2
Elementary Bilingual and Dual Language Education Teacher*	2
Elementary Special Education Teacher	3

¹ RI full certification demonstrates that an educator has met all RI certification requirements. RI full certification types include Initial, Professional, and Advanced certificates (all of which are multi-year certificates). RI full certification is comparable to National Association of State Directors of Teacher Education and Certification (NASDTEC) stage three or higher certificates and is recognized by other states for certificate reciprocity. RI full certification does not include preliminary certificates. Individuals pursuing their first full certificate should apply for their Initial certificate.



Requirements for Full Certification- Elementary Grades

CERTIFICATE & ASSIGNMENT	PATHWAY & CRITERIA	ASSESSMENT
<p>Elementary Education Teacher (11201)</p> <p><i>Valid for assignment as an Elementary Education teacher in grades 1-6 in RI public schools</i></p>	<p>PATHWAYS:</p> <ul style="list-style-type: none"> ▪ RI Approved Program, Credential Review: CRCI, and Reciprocity <p>CRITERIA:</p> <ul style="list-style-type: none"> ▪ Completion of a minimum of 12 weeks of student teaching in this area and a minimum of 60 hours field experience prior to student teaching ▪ Demonstration of meeting content and pedagogical competencies as prescribed by appropriate RIDE-approved national professional association ▪ Demonstration of deep understanding of applicable student standards and proficiency in designing and implementing standards-based instruction and assessment 	<p>Review the required tests document and Go to www.ets.org for test registration, date, and locations</p>
<p>Elementary Bilingual and Dual Language Education Teacher* (11291)</p> <p><i>Language specific</i></p> <p><i>Valid for assignment as an Elementary Bilingual and Dual Language Education teacher in grades 1 - 6 in RI public schools</i></p>	<p>PATHWAYS:</p> <ul style="list-style-type: none"> ▪ Credential Review: CRCI and Reciprocity <p>CERTIFICATE: Hold Elementary Education Teacher (11201)</p> <p>CRITERIA:</p> <ul style="list-style-type: none"> ▪ Completion of a minimum of 45 hours of practicum ▪ Demonstration of meeting content and pedagogical competencies as prescribed by appropriate RIDE-approved national professional association ▪ Demonstration of deep understanding of applicable student standards and proficiency in designing and implementing standards-based instruction and assessment ▪ Demonstration of proficiency in the second language of instruction through applicable language test <p>NOTE: Educators who hold a valid Bilingual and Dual Language certificate are eligible for an English to Speakers of Other Languages certificate</p>	<p>Review the required tests document and Go to www.ets.org for test registration, date, and locations</p>



Requirements for Full Certification- Elementary Grades

CERTIFICATE & ASSIGNMENT	PATHWAY & CRITERIA	ASSESSMENT
<p>Elementary Special Education Teacher (11282)</p> <p><i>Valid for assignment as an Elementary Special Education Teacher in grades 1-6 in RI public schools</i></p> <p><i>May work in a self-contained setting in the content area designated or may provide services directly to students in general education or other settings</i></p>	<p><u>PATHWAYS:</u></p> <ul style="list-style-type: none">▪ RI Approved Program, Credential Review: CRCl, and Reciprocity <p><u>CRITERIA:</u></p> <ul style="list-style-type: none">▪ Completion of 12 weeks of student teaching in this area and a minimum of 60 hours of field experience prior to student teaching▪ Demonstration of meeting content and pedagogical competencies as prescribed by appropriate RIDE-approved national professional association▪ Demonstration of deep understanding of applicable student standards and proficiency in designing and implementing standards-based instruction and assessment	<p>Review the required tests document and Go to www.ets.org for test registration, date, and locations</p>