



Enclosure 5g  
May 23, 2023

RHODE  
ISLAND

# Necessity of School Construction Approvals

Presentation to the Council on Elementary and Secondary Education  
May 23, 2023

# Necessity of School Construction – May Approvals

District	# of Schools	# of Students	Brief Description	Share Ratio*	PAY-GO	State Share	Total Project Cost
Greene School	1	199	Demolition and replacement through new construction of one classroom building; health and safety repairs to two classroom buildings.	30%	\$1,184,924	\$5,563,025	<b>\$18,543,416</b>
North Providence	6	2,671	Construction of 3 new elementary schools, one addition at the high school and health and safety repairs at the middle schools	60%	\$15,889,684	\$74,713,500	<b>\$124,809,195</b>
West Warwick	3	1,956	Roof replacement and new media center at high school. New media center, HVAC control upgrades, carpet and new elevator at two elementary schools	66%	\$1,073,317	\$7,155,444	<b>\$10,895,100</b>
Woonsocket	7	5,690	Construction of one new elementary school, renovations and repairs to support grade reconfiguration at existing elementary and middle schools, district-wide security improvements	86%	\$12,972,098	\$86,480,654	<b>\$100,212,584</b>
<b>Total</b>	<b>17</b>	<b>10,516</b>			<b>\$31,120,023</b>	<b>\$173,912,623</b>	<b>\$254,460,295</b>

\*At the completion of a project, LEAs would either receive the base share rate (above) OR a bonus rate for any eligible incentives not to exceed the maximum rate (provided in your packet).



RHODE  
ISLAND

# Pay-Go Equity Adjustment

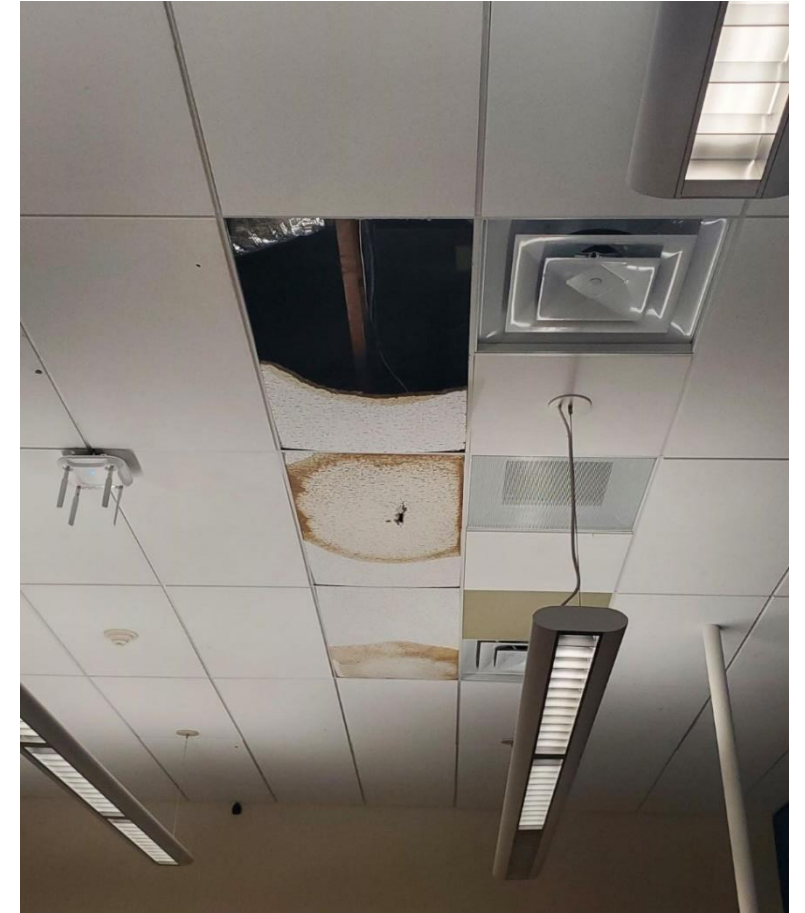
Presentation to the Council on Elementary and Secondary Education

May 23, 2023

# Pay-Go Equity Adjustment: Background

The Pay-As-You-Go formula provides 15% upfront funding to LEAs based on the size of approval. Between 2018 and 2021, *every* district was offered Pay-As-You-Go funding.

- As the Pay-Go funding is proportional to the size of an approval, communities that cannot bond or have limited resources are adversely impacted.
- January 2022: the Council approved the first Pay-Go Equity Adjustment, allowing RI's most challenged communities to complete high-impact projects that they would otherwise not be able to do.

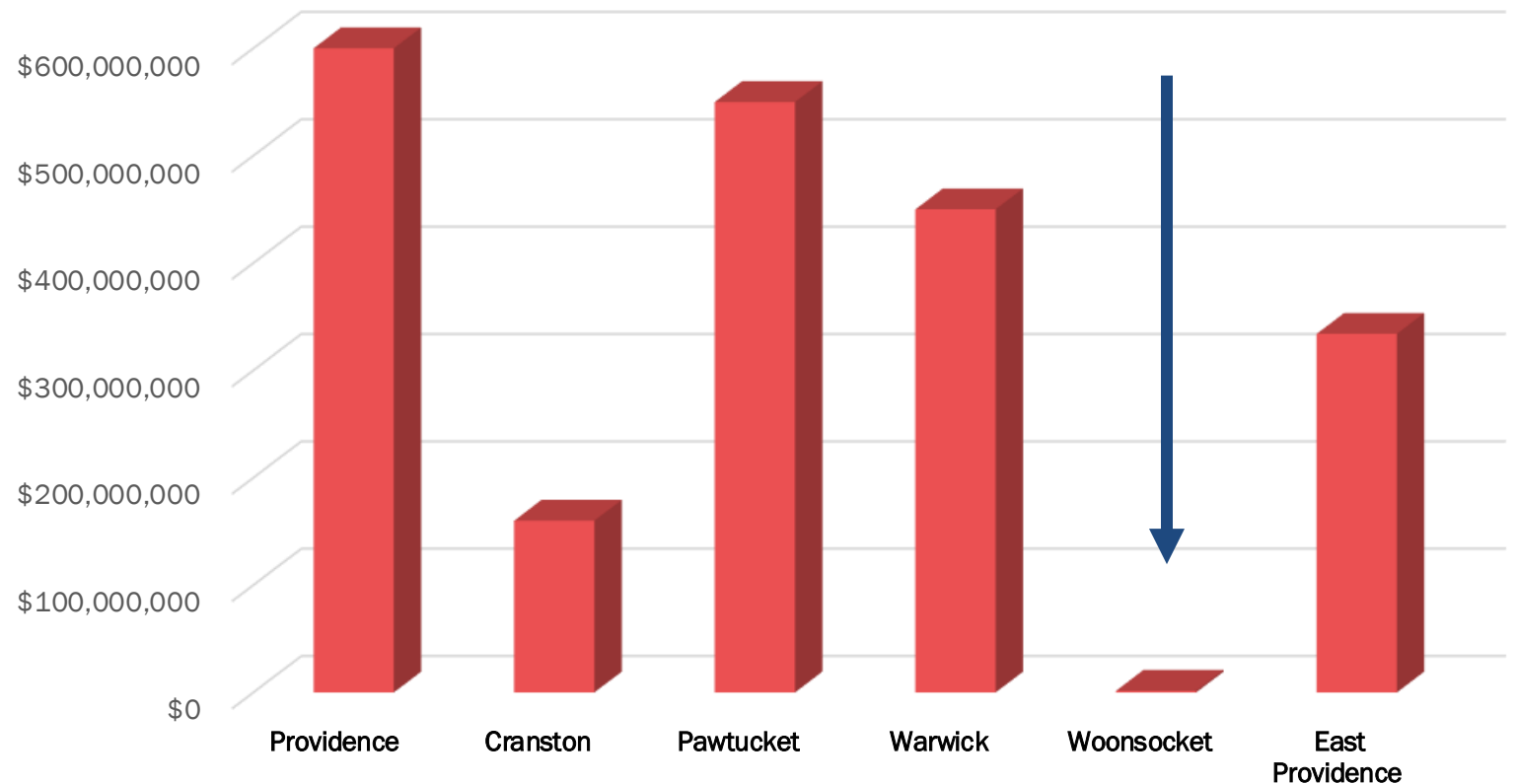


# Pay-Go Equity Adjustment: Woonsocket

Over the last 15 years, Woonsocket has spent less on facilities than Little Compton, a district with just 200 students. This is because the City of Woonsocket does not have any bonding capacity.

- This project would replace three “replacement candidate” elementary schools (Coleman, Bernon Heights and Globe Park), with one new school on Barry Field.
- As the City of Woonsocket does not have bonding capacity, this project will not advance without State support.

School Construction Funding Since 2018





RHODE  
ISLAND

# Learning Inside Out Grant - Outdoor Classroom Initiative

Presentation to the Council on Elementary and Secondary Education

May 23, 2023

# Learning Inside Out

Outdoor education is a powerful tool that all schools can use to deliver for their students.

- RIDE SBA launched the \$7.5 million Learning Inside Out Outdoor Classroom Initiative in December 2022.
- Focused on creating, enhancing, and supporting equitable access to natural resources for all students, while promoting:
  - Ecological benefits
  - Environmental literacy
  - Community connection
  - Curriculum integration
- In partnership with the U.S. Fish and Wildlife Service
- Competitive grant process prioritized sustainability and equity



# Learning Inside Out

The grant will create and enhance a variety of different outdoor space types:





# Learning Inside Out

The opportunity was widely embraced by LEAs across the state.

- 29 LEAs submitted applications for 89 projects, with the potential to impact 37,000 students (27% of total RI student population)
- Application requests total \$7,004,769
- PPSD received the largest total amount with 26 applications submitted totaling \$2.6M

LEA	# of Funded Projects	Approximate # of Students Impacted	Capital Fund Amount
Beacon Charter School	1	360	\$80,356
Burrillville	3	1,070	\$83,000
Central Falls	4	1,288	\$400,000
Chariho	2	3,152	\$99,634
Compass	1	215	\$100,000
East Greenwich	2	588	\$200,000
East Providence	3	592	\$145,000
Exeter West Greenwich	3	713	\$169,718
Foster	1	221	\$100,000
Foster-Glocester	3	921	\$300,000
Glocester	4	577	\$82,838
Greene School	2	199	\$200,000
Highlander Charter School	1	344	\$100,000
International Charter School	1	381	\$100,000
Jamestown	1	418	\$100,000
Kingston Hill Academy	1	260	\$100,000
Lincoln	4	1,509	\$85,000
New Shoreham	1	131	\$100,000
Newport	1	633	\$132,250
North Kingstown	2	1,069	\$147,963
Pawtucket	1	1,079	\$99,200
Portsmouth	1	796	\$6,310
Providence	26	13,691	\$2,600,000
Segue Institute of Learning	2	307	\$141,500
Smithfield	6	1,092	\$141,000
South Kingstown	3	865	\$291,000
The Learning Community	1	579	\$100,000
Warwick	7	1,977	\$700,000
West Warwick	1	2,116	\$100,000
<b>TOTAL</b>	<b>89</b>	<b>37,143</b>	<b>\$7,004,769</b>



## Official Housing Aid Projection as of May 2023

### Bond Funded Projects

	FY 24	FY 25	FY 26	FY 27	FY 28
North Providence	\$0	\$890,340	\$1,052,220	\$1,052,220	\$5,018,280
The Greene School	\$0	\$27,815	\$83,445	\$139,076	\$208,613
<b>Bond Funded Totals</b>	<b>\$0</b>	<b>\$918,155</b>	<b>\$1,135,665</b>	<b>\$1,191,296</b>	<b>\$5,226,893</b>

### Capital Reserve Funded Projects

	FY 24	FY 25	FY 26	FY 27	FY 28
West Warwick	\$0	\$715,544	\$715,545	\$2,146,634	\$2,146,634
Woonsocket*	\$0	\$0	\$0	\$0	\$0
<b>Capital Reserve Totals</b>	<b>\$0</b>	<b>\$715,544</b>	<b>\$715,545</b>	<b>\$2,146,634</b>	<b>\$2,146,634</b>

<b>Approval Impact</b>	<b>\$0</b>	<b>\$1,633,699</b>	<b>\$1,851,210</b>	<b>\$3,337,929</b>	<b>\$7,373,527</b>
------------------------	------------	--------------------	--------------------	--------------------	--------------------

<b>Current Housing Aid**</b>	<b>\$103,462,946</b>	<b>\$84,000,287</b>	<b>\$80,578,717</b>	<b>\$66,622,568</b>	<b>\$58,754,428</b>
------------------------------	----------------------	---------------------	---------------------	---------------------	---------------------

<b>Projected Housing Aid***</b>	<b>\$103,462,946</b>	<b>\$114,478,358</b>	<b>\$130,630,259</b>	<b>\$145,917,172</b>	<b>\$154,914,570</b>
---------------------------------	----------------------	----------------------	----------------------	----------------------	----------------------

### Assumptions

\*State share of Woonsocket projects will mostly be paid through Statewide Bond-funded PayGo. Capital Reserve projects will be paid through the Facility Equity Initiative or other SBA Capital Funds.

\*\* Includes projects (completed and projected) submitted on Housing Aid forms

\*\*\*Includes projections for future, not yet completed projects and anticipated bonuses. Additionally, assumes \$1.5B of approvals in FY'24 and \$335M, adjusted for 3% inflation, thereafter. Subject to changes in State Law governing the program. Also subject to approval by the General Assembly, Council on Elementary and Secondary Education, Town and School governing boards, and voters (for bonds).