

Test Coordinator Monthly Webinar



September 17, 2025

**RHODE
ISLAND**

Test Coordinator Monthly Webinars

Details:

- **Who:** district and school test coordinators, special education directors, EL directors, data managers, technology coordinators
- **What:** pertinent information about state assessments, including monthly tasks, to support schools and LEAs in a successful test administration year
- **Registration:**

Registration 1 (September-January)	Registration 2 (February 11, 2026)	Registration 3 (March- May)	Registration 4 (June 10, 2026)
https://us02web.zoom.us/webinar/register/WN_1VP7mE89Ql-rsChV_lmrg	https://us02web.zoom.us/webinar/register/WN_s5QlhptFTW-F8T58oLMZKQ	https://us02web.zoom.us/webinar/register/WN_CCHbh61HTWOwZfZp7UegcQ	https://us02web.zoom.us/webinar/register/WN_qqT_llylTVqEZvXaS6i-PQ

Monthly Test Coordinator Calendar (Wednesdays at 10:00 AM)	
September 17, 2025	February 11, 2026
October 15, 2025	March 18, 2026
November 19, 2025	April 15, 2026
December 17, 2025	May 20, 2026
January 21, 2026	June 10, 2026

Agenda for September 17, 2025

Preparing for the 2025-26 RI State Assessments

- Overview of the RI State Assessment Program
- Testing Calendar for State Assessments
- Training Calendar
- Bi-Weekly Update Memos
- Updating the Master/School Directory

Individual Test Updates

- ACCESS, SAT, DLM, NAEP

Assessment Results for 2024-2025

- Review of Individual Student Report Policy
- RICAS Family Portal
- RICAS Professional Learning Series
- Review of ADP/SDP Resources

Resource Information

Preparing for the 2025-26 RI State Assessments

Best Practices for Selecting Your Testing Windows

1. Determine how many staff you will need *before* selecting your testing window.
2. Use as much of the state testing window as possible. Even if your school testing window is over, if you're within the state assessment window, you can continue testing.
3. Plan to test 100% of students in each content area.
4. Start as early in the state primary testing window as possible.
5. Adhere to the state testing window for make-up testing.

State Assessments by Grade Level

	Alternate Assessments			General Education Assessments					
Grade Tested	WIDA Alternate ACCESS	DLM	DLM	WIDA ACCESS	NGSA	RICAS	PSAT™10	SAT	NAEP
	<i>ELP</i>	<i>ELA & Math</i>	<i>Science</i>	<i>ELP</i>	<i>Science</i>	<i>ELA & Math</i>	<i>ELA & Math</i>	<i>ELA & Math</i>	
K	K			K					
1	1			1					
2	2			2					
3	3	3		3		3			
4	4	4		4		4			4
5	5	5	5	5	5	5			
6	6	6		6		6			
7	7	7		7		7			
8	8	8	8	8	8	8			8
9	9			9					
10	10			10			10		(Age 15)
11	11	11	11	11	11			11	
12	12			12					12

NAEP: Not all schools will be selected for every test.

2025-2026 State Assessment Calendar: Elementary & Middle School

State testing windows are posted at www.ride.ri.gov/Assessment-Schedules

Test	Content Area(s)	Grades	Primary Test Window	Makeup Test Window
WIDA ACCESS	ELP	K-12	Jan. 5 – Feb. 13, 2026	Feb. 16 – Feb. 27, 2026
WIDA Alternate ACCESS	ELP	K-12	Jan. 5 – Feb. 13, 2026	Feb. 16 – Feb. 27, 2026
RICAS	ELA	3-8	March 23 – April 10, 2026	April 13 – April 17, 2026
	Math	3-8	April 27 – May 15, 2026	May 18 – May 22, 2026
DLM	ELA, Math Science	3-8 5, 8, 11	March 30 – May 29, 2026	
NGSA	Science	5, 8, 11	April 27 – May 15, 2026	May 18 – May 29, 2026
NAEP	See following slide.			

2025-2026 State Assessment Calendar: High School

State testing windows are posted at www.ride.ri.gov/Assessment-Schedules

Test	Content Area(s)	Grades	Primary Test Window	Makeup Test Window
WIDA ACCESS	ELP	K-12	Jan. 5 – Feb. 13, 2026	Feb. 16 – Feb. 27, 2026
WIDA Alternate ACCESS	ELP	K-12	Jan. 5 – Feb. 13, 2026	Feb. 16 – Feb. 27, 2026
DLM	ELA, Math Science	3-8, 11 5, 8, 11	March 30 – May 29, 2026	
PSAT 10	Reading, Math	10	March 23 – April 10, 2026	April 13 – April 17, 2026
RI SAT School Day	Reading, Math	11	March 23 – April 10, 2026	April 13 – April 17, 2026
NGSA	Science	5, 8, 11	April 27 – May 15, 2026	May 18 – May 29, 2026
NAEP	See following slide.			

2025-2026 State Assessment Calendar: NAEP

State testing windows are posted at www.ride.ri.gov/Assessment-Schedules

Test	Content Area(s)	Grades/Ages	Test Window Opens	Test Window Closes
NAEP State & National <i>School or NAEP Devices</i>	Reading, math Civics & U.S. History	Grades 4 & 8 Grade 8	January 26, 2026	March 20, 2026
NAEP Pilot <i>NAEP Devices</i>	Reading, math	Grades 4, 8 & 12	January 26, 2026	March 20, 2026

- *Not all schools will be selected for every test.*
- NAEP: National Assessment of Educational Progress

2025-2026 RISAP Training Calendar

Training calendar is posted at: <http://www.ride.ri.gov/assessment-manuals>

Rhode Island State Assessment Program: Guide to Required Training

This document contains training requirements for district and school test coordinators, their teams, and test administrators for the 2025-26 Rhode Island State Assessments.

More information is at <http://www.ride.ri.gov/assessment-manuals>



RIDE Rhode Island
Department
of Education

- Training requirements for each state assessment.
- Dates for test coordinator and test administrator trainings for all assessments.
- Links to register.

Upcoming Test Coordinator Trainings

Assessment/Title of Training	Dates/Times	Registration Link
Understanding RICAS Reporting <i>For district and school test coordinators, instructional coaches and principals</i>	September 18 (Webinar) • 9:30am-11:00am	https://us02web.zoom.us/j/84769567448
WIDA ACCESS & WIDA Alternate ACCESS Test Coordinator Training <i>For district and school test coordinators and MLL Directors</i>	November 13 (In Person) • 9:00am-11:30am • 12:30-3:00pm November 14 (In Person) • 9:00am-11:30am • 12:30-3:00pm	https://www.eride.ri.gov/workshopreg/ViewWorkshop.aspx?workshopid=2032

Assessment Training Attendance Support

NEW A RIDE system to track registration and attendance at required trainings

RIDE is rolling out a new system to help LEAs and schools ensure they have received all the training they need to administer state assessments.

- Tracks registration by school and LEA for required in-person and webinar events
- Allows us to reach out if we notice a school or LEA isn't represented at events to help ensure organizations are properly prepared to administer each assessment
- More centralized and automated than previous systems
- Integrated with current systems, so no additional burden on schools/LEAs

1. Determine which assessment each school administers
2. Follow registration and attendance at training events
3. Reach out if we notice gaps

Please provide feedback as the system rolls out!

adam.greeney@ride.ri.gov or assessment@ride.ri.gov



RI State Assessment Test Coordinator's Memo

August 29, 2025

Monthly Test Coordinator Webinars and Bi-Weekly Memos

Join Us for the 2025–2026 Test Coordinator Monthly Webinar Series!

We're excited to kick off our new webinar series in just a few weeks! The first session will take place on **Wednesday, September 17**, from 10:00 to 11:00 a.m. All webinars will be held monthly on Wednesdays at the same time.

These sessions are designed not only for test coordinators, but for anyone involved in preparing for our state assessments. We encourage broad participation and look forward to your engagement.

👉 Use the links below to register and secure your spot!

Bi-Weekly Update Memos

RIDE will send bi-weekly memos with information and updates for all state assessments to school and district test coordinators and special education directors.

All memos are posted at www.ride.ri.gov/tc if you missed one!


NOTE: If you are new to your role, please email assessment@ride.ri.gov to be added to our contact list.

Update Master/School Directory

- There are now two ways to access RIDE's master/school directory:
 1. The public Data Center website: <https://datacenter.ride.ri.gov/Directory> (does not display emails)
 2. Through the confidential [RIDE Portal](#). Click on the *Master Directory* icon under *Public Applications*.
- RIDE uses roles in the master directory to create test coordinator accounts in each test platform and update the assessment listserv. RIDE also uses the physical addresses in the directory to ship test materials.
- Updating information in the directory has two steps:
 1. Email changes to anyone serving in the test coordinator role to assessment@ride.ri.gov.
 2. Inform your **data manager** of changes to the Master Directory. Data managers will make the changes in the Master Directory. Make sure your school and district addresses are correct and make sure the following roles are assigned, even if the person's title is different:
 - District Test Coordinator
 - School Test Coordinator
 - Principal
 - Data Manager
 - Technology Coordinator/Manager
 - SSD Coordinator (for schools administering SAT and PSAT 10)
- **Data Managers:** contact Mario Goncalves at mario.goncalves@ride.ri.gov for help.

Master Directory View in Data Center

<https://datacenter.ride.ri.gov/Directory>



DataCenter
Rhode Island
Department
of Education

Dashboards +

Data Reporting +

RIDE Sites +

Schools Directory

Contact

Home / Directory / LEA Details

Barrington

LEA Information

LEA Code: 01

LEA Type: Traditional School District

NCES Code: 4400030

Grade Span: PK - 12


Status: Active


Location(s)


Physical Location

283 County Road

Barrington, RI 02806

 (401) 245-5000

 (401) 245-5003

 barringtonschools.org

Contact(s)

Robert Wargo

Title: Superintendent

Role(s): Superintendent
District Testing Coordinator

Jeffery Leonardo

Title: Assistant Business Manager

Role(s): Business Manager

Douglas Fiore

Title: Director of Administration & Finance

Role(s): Business Manager

Ruth Corley

Title: Assistant Superintendent/Instruction & Curriculum

Role(s): District Testing Coordinator
Assist. Superintendent Curriculum, Inst., Assess.

Kristen Matthes

Title: Director of Special Education

Role(s): Special Education Director


David Burrows

Title: Director of Technology

Role(s): Director of Information Technology

Master Directory View in RIDE Portal (example)

<https://portal.ride.ri.gov/Account/Login> (click on the *Master Directory* icon under *Public Applications*)




RIDE
Rhode Island
Department
of Education

Organization Summary
[Search For Organization](#) [Education Directory Reports](#)


LEA Information:
Name: [Barrington](#)
Code: 01
Type: LEA
NCES Code: 4400030
Comments:

Parent :
Start Date:
Grade Span: PK - 12
RI Relay#:

Status: Active
End Date:
Level:
TDD#:
Region: East Bay

Location(s):
Type: Physical Location
Address: 283 County Road
Barrington, RI 02806
Website: [barringtonschools.org](#)
Email: [wargor@barringtonschools.org](#)
[VIEW MAP](#) 
Phone: (401) 245-5000
Fax: (401) 245-5003

Contact(s):

Name: [Mark Biancuzzo](#) 


Title: Assistant Director of Pupil Personnel Services

Roles:

Phone: (401) 247-3145

Fax:

Email: [Biancuzzom@barringtonschools.org](#)

Name: [David Burrows](#) 


Title: Director of Technology

Roles: Director of Information Technology

Phone: (401) 245-5000

Fax: (401) 245-5003

Email: [burrowsd@barringtonschools.org](#)

Name: [Ruth Corley](#) 


Title: Assistant Superintendent/Instruction & Curriculum

Roles: District Testing Coordinator
Assist. Superintendent Curriculum, Inst., Assess.

Phone: (401) 245-5000

Fax:

Email: [corleyr@barringtonschools.org](#)

Name: [Jerilyn Dupuis](#) 


Title: Transportation - Transportation Coordinator

Roles:

Phone: (401) 245-5000

Fax:

Email: [dupuisj@barringtonschools.org](#)

Name: [Douglas Fiore](#) 

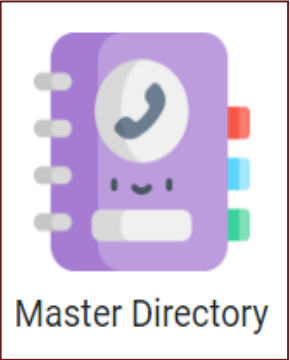
Title: Director of Administration & Finance

Roles: Business Manager

Phone: (401) 245-5000

Fax: (401) 245-5003

Email: [fiored@barringtonschools.org](#)



Master Directory

Individual Test Updates

2025-2026

SAT/PSAT 10 Reminders

Reminders

- Students can manage the extended time accommodation
- Multi grade testing rooms *if necessary*
- **SSD Online is now web-based**
- Educators who have children taking either the SAT or the PSAT 10 this year:

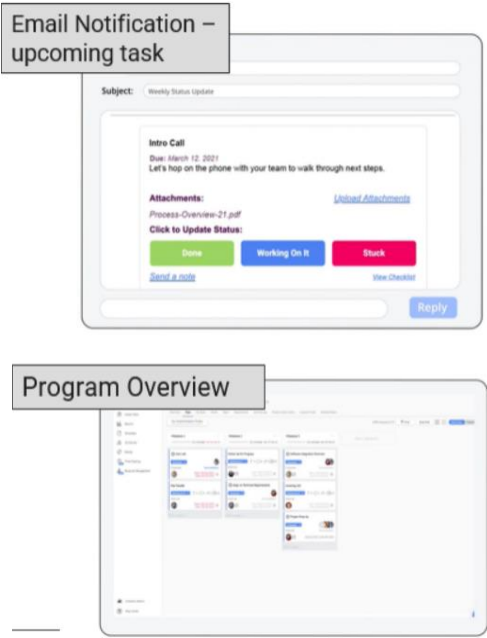
Can proctor	Cannot proctor
I'm proctoring for SAT and my child is taking the PSAT 10 or vice versa.	I'm proctoring the same test my child is taking.
Can be school test coordinator	Cannot be school test coordinator
My child is taking the SAT or PSAT 10 in another school.	My child is taking the SAT or PSAT 10 in the school in which I am the test coordinator.

Onboarding Survey (will be sent Sept. 22): All test coordinators should complete the College Board onboarding survey no later than Oct 10th to ensure all information is accurate and received by College Board.

- *Please provide the work email address associated with your College Board account.*

College Board Newsletters and Checklists: College Board will send out monthly newsletters and interactive checklists beginning in November and posted at www.ride.ri.gov/tc.

Interactive Checklist will be sent this year only to primary test coordinators.



WIDA ACCESS & Alternate ACCESS: Getting Started

WIDA Home Page: <https://wida.wisc.edu/>

Testing Dates	
11/24/25 - 2/27/26	WIDA AMS Test Setup Available for Registrations
12/18/25	Districts Receive Test Materials
1/5/26 - 2/13/26	Test Window
2/16/26 - 2/27/26	Make-Up Test Window
12/18/25 - 2/13/26	Additional Test Material Ordering Window in WIDA AMS
3/4/26	Deadline for Shipping Completed Test Materials to DRC - Postmark date
4/28/26	Districts Receive ACCESS and Alternate ACCESS Reports and Data - Posted in WIDA AMS
5/15/26	Districts Receive Printed ACCESS and Alternate ACCESS Reports
6/9/26	Updated ACCESS and Alternate ACCESS Data - Posted in WIDA AMS for SEA and Districts

Member/State Pages ▾ Login ▾

Nevada

New Hampshire

New Jersey

New Mexico

North Carolina

North Dakota

Northern Mariana Islands

Oklahoma

Palau

Pennsylvania

Rhode Island

South Carolina

Requirements and Resources

See below for state-specific information and resources related to ELL assessment, including your state's ACCESS for ELLs Checklist, where you can find each step in the ACCESS testing process from beginning to end.

ACCESS for ELLs Online Checklist

ACCESS for ELLs Paper Checklist

WIDA ACCESS & Alternate ACCESS: What's new?

Resource: [What to know: WIDA assessments in the 2025-2026 school year](#)

WIDA ACCESS (Grades 1-12)	WIDA ACCESS for Kindergarten	WIDA Alternate ACCESS
<ul style="list-style-type: none">• Behind the scenes changes to align with ELD 2020 standards• Updated scoring rubrics• Test administrators administering the paper version must complete the redesigned training courses in the WIDA Secure Portal (including Scoring the Speaking Domain) and pass the certification quiz.• The training courses are now available.	<ul style="list-style-type: none">• Fully redesigned test• Test administrators must complete the redesigned WIDA ACCESS for Kindergarten: Administration and Scoring training course in the WIDA Secure Portal and pass the certification quiz.• The training course will be available on September 29.	<ul style="list-style-type: none">• Exit criteria using the WIDA Alternate ACCESS - <i>coming soon</i>• Identification criteria using the new Alternate Screener - <i>coming soon</i>

Less than Four Domains:

Beginning in 2025-26, WIDA will calculate Overall Composite Scores for students who are exempt from one or more domains. Domain exemptions listed in IEP or 504 Plan must be recorded in MLL Census.

DLM Alternate Assessment

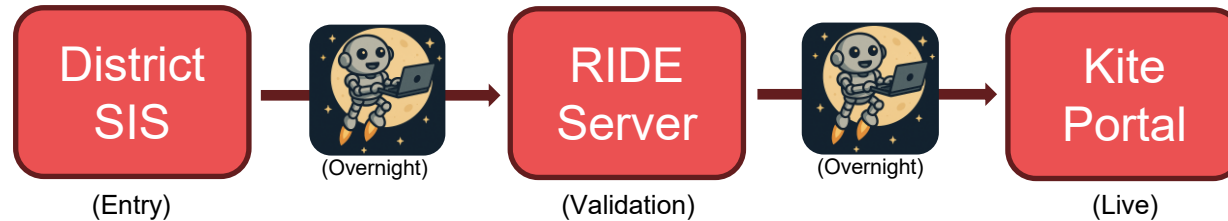
Test Administrator training modules are available now through Kite Educator Portal:

1. Log in to Kite Educator Portal and click *yes* to the security agreement.
 2. Wait 30 minutes for Educator Portal to update before starting the modules.
- If teachers complete the modules now, they won't have to complete them in the spring.
 - To add teachers and create accounts, log in to Kite Educator Portal and select Users. *If a teacher administered DLM last year and is new to your district this year, contact Heather Heineke to transfer their account.*

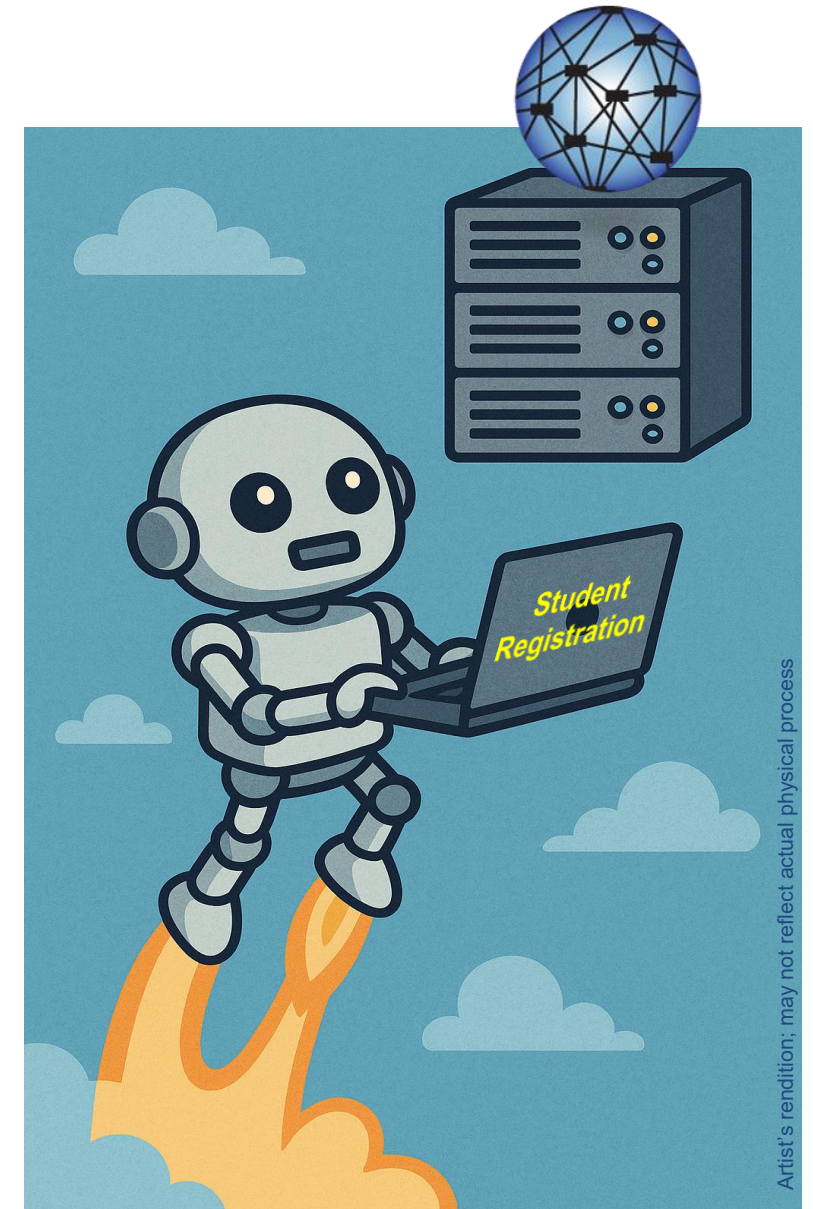
DLM Student Registration

New Registration for DLM sent overnight to the Kite Educator Portal

- On October 15, RIDE will begin updating student data nightly on Kite Educator Portal
- DLM on par with RICAS and NGSA for registration update speed
- Changes you make to student enrollment and eligibility status in the enrollment system will be reflected within 48 hours in the Kite Educator Portal



- You must check:
 - ☐ IEP Census to ensure students have the Alt flag (Alt. Assessment = 3), and
 - ☐ Enrollment Census (to ensure student has an active enrollment record)
 - ☐ Outplaced students must be updated by sending district



NAEP 2026 - National Assessment of Educational Progress

2024 National Results Release

- grade 8 Science
- grade 12 Reading & Math
- www.nationsreportcard.gov


The Nation's Report Card

REPORTS DASHBOARDS DATA TOOLS NEWSROOM FOCUS ON NAEP TAKE NAEP NOW

SPOTLIGHT ON STUDENT PERFORMANCE New Releases: September 9, 2025

How did students perform in the nation compared to 2019?


Average scores were lower across all three assessments.



2024 NAEP Science Assessment at Grade 8

■ **31%** of eighth-graders performed at or above *NAEP Proficient*.


[VIEW REPORT](#)



2024 NAEP Mathematics Assessment at Grade 12

■ **22%** of twelfth-graders performed at or above *NAEP Proficient*.

[VIEW REPORT](#)



2024 NAEP Reading Assessment at Grade 12

■ **35%** of twelfth-graders performed at or above *NAEP Proficient*.

[VIEW REPORT](#)

For More Information: [See video summarizing the results](#) | [See the press release](#)

[SHOW RELATED NAEP DATA SOURCES +](#)

NAEP 2026

Reading & Mathematics

"Main" NAEP - grades 4 & 8

Pilot NAEP - grades 4 & 12

January 26 – March 20, 2026

50 – 150 students

Each student tested in one subject

120 Minutes

School or NAEP Devices determined by School Technology Survey (STS)

NAEP field staff

NAEP 2026

Reading & Mathematics, Civics & US History

"Main" and National NAEP - grade 8

January 26 – March 20, 2026

100 students

Each student tested in one subject

120 minutes

NAEP Devices **BUT** School Technology Survey must be completed by September 19

NAEP field staff

NAEP - National Assessment of Educational Progress (cont'd)

District Superintendent
cc: District Test Director

- Confirm schools
- Confirm roles
- Register in the NAEP AMS

District Technology Director
cc: District Test Director

- Register in the NAEP AMS
 - Complete the School Technology Survey
- Due September 19

School Principal
cc: District Test Director

September - November

- Register in the NAEP AMS
 - Assign School Coordinator
- November
- Assessment date notification
 - School Coordinator responsibilities

Assessment Results 2024-2025



Individual Student Score Reports (ISRs) Policy

www.ride.ri.gov/assessment-results

All ISRs (except RICAS) have been either shipped and delivered to schools or made available on the assessment platform.

- RICAS ISRs will arrive in district in **October**.

Sending Score Reports to Families

- Families should receive score reports no more than two months after LEAs receive them.*
- Score Report Shells in languages other than English are available for all state assessments.
- Outplacement Schools:
 - Sending LEAs are responsible for ensuring families receive score reports.
 - Sending LEAs are responsible for providing outplacement schools with score reports for student records.

Score Interpretation Materials

- Available for teachers and families
- Available for past years' assessments

***NOTE:** The NGSA science and RICAS ISRs are the exception to this rule because they include state-level data that has not yet been released to the public. LEAs must wait to send the NGSA and RICAS ISRs to families until all state assessment data has been released.

RICAS Early Released Data

Embargoed Data

As a reminder, as in previous years, all early released RICAS data is embargoed until data is released publicly. This means that any and all early release data that is available in the RICAS portal can be *internally viewed and utilized at the school level only*:

- *Early Release Files*
- *Early Roster Files*
- *Released Essay PDF*
- *Constructed Response PDF*

Please note that this includes student ISRs when they arrive to schools (if arrival occurs before the public release).

NEW RICAS Family Portal

The Rhode Island Department of Education (RIDE) is pleased to announce the new Rhode Island Comprehensive Assessment System (RICAS) **Family Portal** coming in October.

- The RICAS Family Portal will provide online access to a student's individual performance data on the RICAS tests and will assist with tracking assessment information throughout the student's academic career.
- Families will be able to sign up for a RICAS Family Portal account using their student's SASID and date of birth.
 - Up to ten students can be added to each account.
- Within the portal, families can access the student's test history, test results, detailed results, and helpful resources.
- *Additional information for schools is coming soon!*

2 Part Series

RICAS Professional Learning

 RIDE

Bring a leadership team of 4-6 people to participate in a deeper dive into RICAS data and instruction. Suggested team members: District Leadership, School leadership, instructional coaches

SESSION 1

Unpack, Infer, and Next Steps

Turn your RICAS data into insight! Reveal trends, interpret meaning, and drive impact. Collaborate with your team to analyze data and plan for achievement.

Session Dates:
October 28, 2025
October 29, 2025

SESSION 2

Analyze Student Work to Enhance Learning and Prepare for RICAS

Take a closer look at RICAS ELA and Math item analysis, explore student work using scoring rubrics, and develop a plan for instructional improvement.

Session Dates:
November 17, 2025 (AM & PM Sessions)

RICAS Professional Learning Series

<https://www.eventcreate.com/e/2025ricasplseries>

SESSION 1

Unpack, Infer, and Next Steps

Turn your RICAS data into insight! Reveal trends, interpret meaning, and drive impact. Collaborate with your team to analyze data and plan for achievement.

Session Dates:
October 28, 2025
October 29, 2025

SESSION 2

Analyze Student Work to Enhance Learning and Prepare for RICAS

Take a closer look at RICAS ELA and Math item analysis, explore student work using scoring rubrics, and develop a plan for instructional improvement.

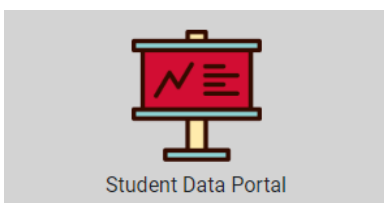
Session Dates:
November 17, 2025 (AM & PM Sessions)

RIDE Data Portal

To access the RIDE Data Portal, visit the RIDE website:

<https://ride.ri.gov/> or go to <https://portal.ride.ri.gov> and follow these steps:

1. Click on the *Instruction and Assessment* tab at the top of the homepage.
2. Choose *Assessment* from the drop down.
3. Choose *Assessment Results* from the left.
4. Choose *RIDE Portal* and log in.
5. Once logged in, click on *All Applications* on left and find the Portal icon.



Assessment Results

This page provides links to the results of Rhode Island's statewide assessments. Below you will find results from past and current assessments and score interpretation materials.

Assessment data and interactive reports can be found on the following sites:



RI ASSESSMENT DATA
PORTAL



RIDE PORTAL

Public Access

An open link to aggregate data dashboard visualizations and downloads that provide an in-depth presentation of assessment results data by school year at the state, district and school levels, including by grade and/or student subgroups for all Rhode Island state assessments.

[Download the RIADP User Guide](#).

Educator Access Only

Districts, school administrators, and teachers can access student assessment data through the "Student Data Portal" app within the RIDE Portal.

- [SDP Teacher Level Access](#)
- [SDP District & School Level Access](#)
- [Student Data Portal User Guide](#)
- [Data Managers Super User Module Guide](#)

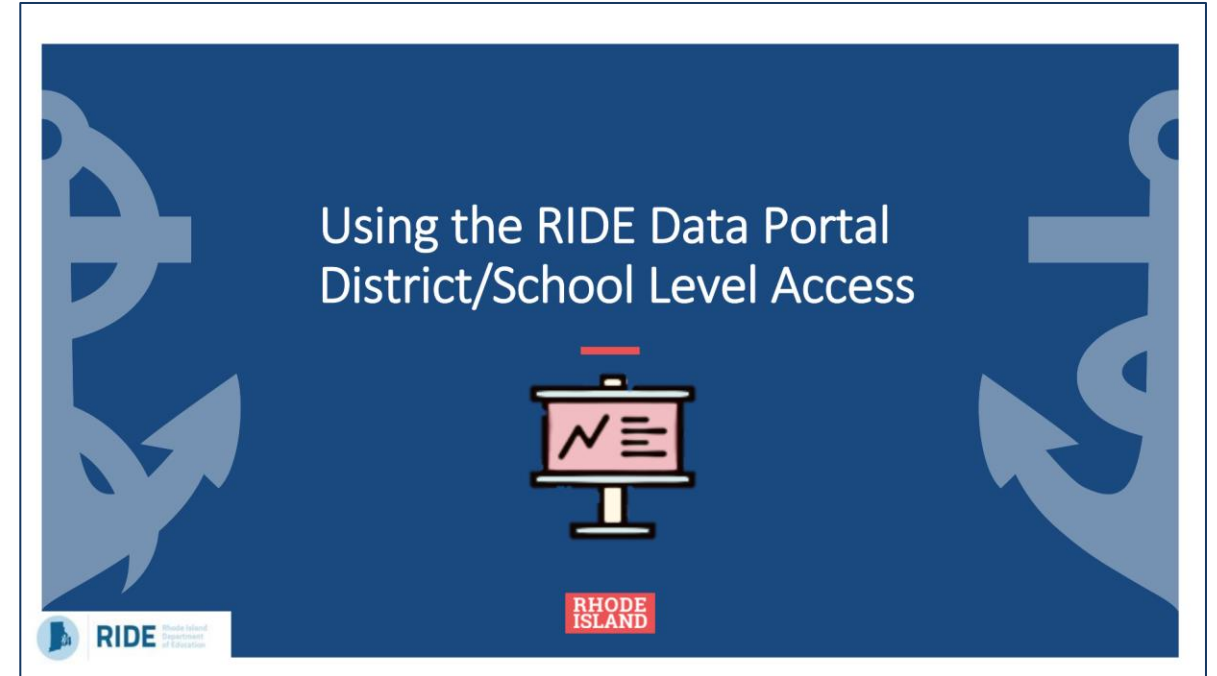
SDP/ADP Resources

Rhode Island Assessment Data Portal (ADP)

- Public website
- Aggregate RI assessment performance
- District, school, and/or grade level

RIDE Portal- Student Data Portal Application (SDP)

- Role-appropriate access
- Confidential student-level assessment data
- District, school, grade, and individual student level



Video link:

media3.ride.ri.gov/INSTRUCTION_ASSESSMENT/2024/SDP_2024.mp4

Reference Information

2024-25 Assessment Data Available Now

www.ride.ri.gov/assessment-results

Test	Type of Data Available	Online Location
ACCESS & Alternate ACCESS	LEA, school, and student	WIDA AMS
DLM	LEA, school, and student	Educator Portal
RICAS	Student-level (only raw data; no scaled scores)	RICAS Portal
PSAT 10	LEA, school, and student	College Board K-12 Reporting Portal
SAT	LEA, school, and student	College Board K-12 Reporting Portal
NGSA	Student-level only	NGSA Reporting Portal
NAEP	State and national data	The Nations's Report Card

2024-25 Individual Student Score Reports (ISR) Calendar

www.ride.ri.gov/assessment-results



Test	Date		Online Location
	Paper (mailed)	Online	
ACCESS & Alternate ACCESS	May 15, 2025	Available now	WIDA AMS
DLM	August 1, 2025	July 18, 2025	Educator Portal
RICAS	October 2025	October 2025	RICAS Portal
	N/A	October 2025	RICAS Family Portal
PSAT 10*	N/A	Available now	College Board K-12 Reporting Portal
SAT*	N/A	Available now	College Board K-12 Reporting Portal
NGSA	September 17, 2025	June 2, 2025	NGSA Reporting Portal

**PSAT 10/SAT score reports are no longer available on the RIDE Student Data Portal and must be printed from the College Board K12 Reporting Portal.*

Primary RIDE Website Resources

Webpage Name	Contents	Link
RISAP Test Coordinator Information	Updates, memo archives, monthly webinar registration link and recording/presentation archive, help desk and general RISAP information.	https://ride.ri.gov/TC
Assessment Schedules	State testing windows for all assessments	www.ride.ri.gov/assessment-schedules
Assessment Manuals & Materials	Manuals, guides, and links to assessment websites to support administration, training requirements and resources for test coordinators and test administrators, training calendar	https://ride.ri.gov/assessment-manuals
Assessment Accommodations	Accommodations and Accessibility Features Manual, assessment-specific resources	www.ride.ri.gov/Accommodations
Assessment Exemptions	Information about medical exemptions	www.ride.ri.gov/assessment-exemptions
Assessment Results	Assessment reporting website resources and archive	www.ride.ri.gov/Assessment-Results
Released Items / Practice Tests	Released items, practice tests, and other resources	www.ride.ri.gov/Released-Items

Assessment Office Resources

- Assessment Mailbox: assessment@ride.ri.gov
- Alternate Assessment Mailbox: alternate.assessment@ride.ri.gov
- Assessment Resources: www.ride.ri.gov/TC
 - Manuals and Training: www.ride.ri.gov/assessment-manuals
 - Accommodations: www.ride.ri.gov/accommodations
- Assessment Data Portal:
 - Public Site: <https://www3.ride.ri.gov/ADP>
 - Confidential Site: <https://portal.ride.ri.gov/Account/Login>

Ana Karantonis (WIDA ACCESS, psychometrics)

- 401-222-8940
- Ana.Karantonis@ride.ri.gov

Heather Heineke (DLM, NGSA)

- 401-222-8493
- Heather.Heineke@ride.ri.gov

Tricia Federico (RICAS, PSAT 10, SAT)

- 401-222-8478
- Tricia.Federico@ride.ri.gov

Jackie Branco (NAEP, accommodations)

- 401-222-4685
- Jacqueline.Branco@ride.ri.gov

Adam Greeney (Data Analysis)

- 401-222-8944
- Adam.Greeney@ride.ri.gov

Phyllis Lynch (Director of Office of Assessment)

- 401-222-4693
- Phyllis.Lynch@ride.ri.gov