

RICAS Individual Student Report (ISR) Guide

The family of each student receives their child’s RICAS results in the form of the individual student score report (ISR).

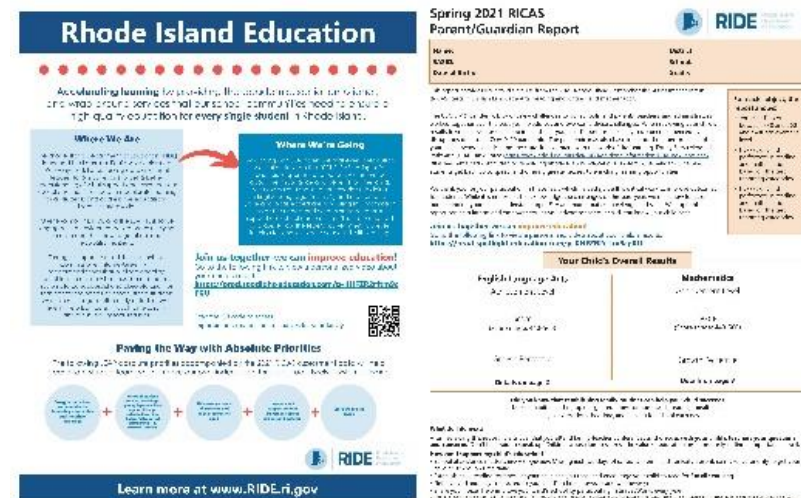
A paper copy of the ISR is provided to families from the student’s school district. Districts also retain a PDF copy of the student’s ISR and can securely transfer that to a student’s family or use it to re-print the ISR if a duplicate is needed.

ISRs include the following information, explained in more detail in this guide:

- general information about the year’s test administration
- student scale score and achievement level for ELA and mathematics
- student past performance on previous RICAS administrations (if applicable)
- achievement comparison with the school/district/state
- student growth percentile (SGP) and average growth for the school, district, and state
- reporting category points earned and student performance on individual test questions

New for 2021:

- Each ISR contains a link to a personalized video that explains that student’s results. This video walks through the different parts of the ISR and explains what each means.
- Student growth for this year has only been calculated for students in grades 5-8, and if they have taken RICAS in 2019. This year growth was calculated slightly differently than last year since RICAS was not administered in 2020 (for more information, review the [Family Guide to SGPs](#)).
- The QR code on the ISR leads to www.ride.ri.gov/Families.



Spring 2021 RICAS Parent/Guardian Report



| | |
|-----------------------|------------------|
| Name: | District: |
| SASID: | School: |
| Date of Birth: | Grade: |

This report provides your child's results from the 2021 Rhode Island Comprehensive Assessment System (RICAS) tests in English Language Arts (reading and writing) and mathematics.

The COVID-19 pandemic brought new challenges to our schools, and parents, teachers, and administrators worked together over the past year to address and overcome these challenges. When reviewing your child's results from this assessment, keep in mind that your child's performance may have been influenced by disruptions due to the COVID-19 pandemic. The pandemic may also have influenced the performance of your child's school, district, and the state. In alignment with the work of the Learning, Equity & Accelerated Pathways (LEAP) Task Force (<https://www.ride.ri.gov/insideRIDE/AdditionalInformation/LEAPTaskForce.aspx>), RIDE has remained committed to rebuilding Rhode Island's educational system post-pandemic, helping students get back up to speed, and offering greater access to enriching learning opportunities.

We thank you for your participation in these tests which helped guide this critical work to improve outcomes for students. While it is important to acknowledge the challenges of this past year, we must now focus on understanding your child's understanding of ELA and mathematics knowledge and skills. We hope this report can help inform and empower you as you advocate for your child. You know your child best.

Join us together—we can improve education!

Go to the following link to view a personalized video about your child's results:
<https://prod.spotlight-education.com/p-KHFZR2rftm9cp0U>

For each subject, the report shows:

- Your child's score between 440 and 560 and their achievement level
- How your child performed in reading and mathematics based on the test reporting categories
- How your child performed in reading and mathematics based on the test reporting categories

Your child's personal information is noted at the top of the page, including their school and district.

This introduction provides context about the 2021 RICAS administration, while the shaded call-out lists the information displayed on the ISR.

New this year! Each ISR contains a link to a personalized video that walks families through the ISR and your child's results.

Your Child's Overall Results

| English Language Arts | Mathematics |
|-----------------------------------|-----------------------------------|
| Achievement Level | Achievement Level |
| Score (Score range: 440-560) | Score (Score range: 440-560) |
| Growth Percentile | Growth Percentile |
| Details on page 2 | Details on page 3 |

This section summarizes your child's overall score out of a possible 560 on each content area test that they took in spring 2021.

In addition to the score, this section includes the achievement level your child has reached in each content area, which helps to show if your child is on-track with grade-level expectations, and your child's student growth percentile (grades 5-8 only).

More details about each of these are on the next page.

Did you know that establishing family routines can help your child succeed?
Make a habit of setting up designated times for homework, reading, mealtimes, family conversations, bedtime, and leaving for school each day.

What do I do next?

After reviewing this report, it is critical that you attend family-teacher conferences and discuss with your child's teachers your questions and concerns. Don't be afraid to speak up. Children whose families stress the value of education are more likely to find it important, as well.

How can I support my child's education?

- School attendance matters, every single day. Missing just two days of school a month is chronically absent, so make it a priority to get your child to school on time daily.
- Establish daily reading routines, let your child see you read, and encourage your child to read for fun all year long.
- Get involved and stay connected to your child's school, however and whenever you can.
- Share your voice! Help improve your child's school by participating in SurveyWorks every year.
- Start a conversation. Ask questions. Talk to your child about what they're learning, and show an interest in the subjects that excite them.

Learn more about how you can use these results to work in collaboration with your child's teacher to help your child succeed.

Student Score and Achievement Level Information

The colored bar shows the score range for each achievement level and where your child's score falls, which indicates how close your child is to the next level.

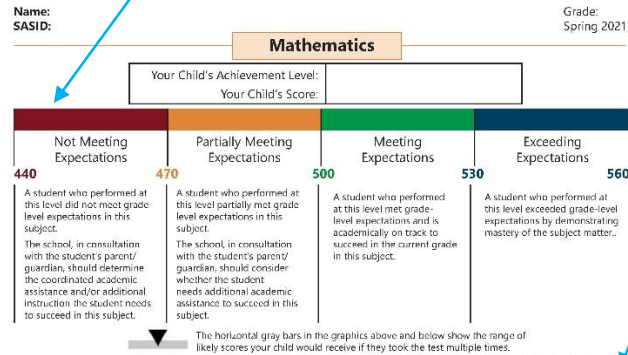
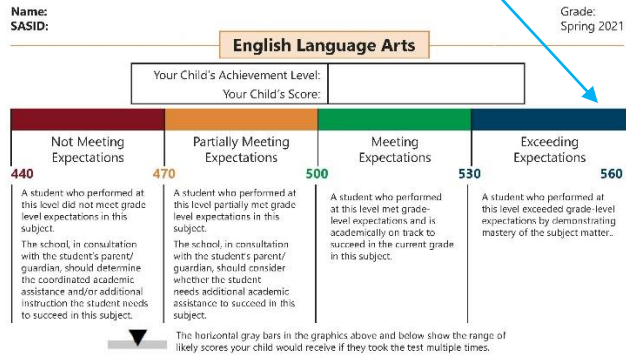
You will also see how your child's score compares to the average score in their school, their district, and statewide, as well as what your child scored if they took the test in 2019 or 2018.

A student growth percentile (SGP) describes your child's learning over time compared with their academic peers (peers are other students with similar scores on previous state tests). Growth percentiles can be used with content scores and achievement levels to understand progress towards grade level expectations.

The following page describes this section about reporting categories and item-level information in more detail.

Only students in grades 5-8 with prior state test scores will have SGPs for 2021. ISRs for students in grades 3 and 4 will not include an SGP chart.

For more information about student growth, check out the [Family Guide to Student Growth Percentile](#) posted at www.ride.ri.gov/Assessment-Results.



Achievement
 How your child performed compared to students in their school, district, and state.

| Your Child's Grade | Your Child's Score | Year | Average Score | | |
|--------------------|--------------------|------|---------------|----------|-------|
| | | | School | District | State |
| | | 2021 | | | |
| | | 2019 | | | |
| | | 2018 | | | |

2021 Student Growth Percentiles
 Your child's score this year is the same as or better than percent of Rhode Island students who had a similar score to your child on the assessment(s) in a previous year(s).

| Lower Growth | Your Child | Higher Growth |
|--------------|------------|---------------|
| | School | |
| | District | |

1 20 40 60 80 99
State Avg.

Achievement
 How your child performed compared to students in their school, district, and state.

| Your Child's Grade | Your Child's Score | Year | Average Score | | |
|--------------------|--------------------|------|---------------|----------|-------|
| | | | School | District | State |
| | | 2021 | | | |
| | | 2019 | | | |
| | | 2018 | | | |

2021 Student Growth Percentiles
 Your child's score this year is the same as or better than percent of Rhode Island students who had a similar score to your child on the assessment(s) in a previous year(s).

| Lower Growth | Your Child | Higher Growth |
|--------------|------------|---------------|
| | School | |
| | District | |

1 20 40 60 80 99
State Avg.

How your child performed in each reporting category and on each individual test question

| Reporting Category | Points Earned by Your Child | Total Possible Points | Average Points Earned by Students Meeting Expectations | | |
|-----------------------|-----------------------------|-----------------------|--------------------------------------------------------|----------|-------|
| | | | School | District | State |
| Reading | | | | | |
| Language ¹ | | | | | |
| Writing ¹ | | | | | |

¹ The language reporting category includes the standard English convention scores from the essays.
² The writing reporting category is based on the idea development essay scores.

Individual Test Questions

| Question Number | 1 | 2 | 3 | 4 | 5 | 6 | 7 | 8 | 9 | 10 | 11 | 12 | 13 | 14 | 15 | 16 | 17 | 18 | 19 | 20 | 21 | 22 | 23 | 24 | 25 | 26 | 27 | 28 | 29 | 30 |
|-----------------|---|---|---|---|---|---|---|---|---|----|----|----|----|----|----|----|----|----|----|----|----|----|----|----|----|----|----|----|----|----|
| Points Earned | | | | | | | | | | | | | | | | | | | | | | | | | | | | | | |

Key: **1/2** = x points earned out of y possible points. **Blank space** = no answer. **N/A** = item not administered.
1/2 = state idea development score. **1/2** = essay conventions score.

Page 2 of 4

How your child performed in each reporting category and on each individual test question

| Reporting Category | Points Earned by Your Child | Total Possible Points | Average Points Earned by Students Meeting Expectations | | |
|--------------------|-----------------------------|-----------------------|--------------------------------------------------------|----------|-------|
| | | | School | District | State |
| | | | | | |
| | | | | | |
| | | | | | |

Individual Test Questions

| Question Number | 1 | 2 | 3 | 4 | 5 | 6 | 7 | 8 | 9 | 10 | 11 | 12 | 13 | 14 | 15 | 16 | 17 | 18 | 19 | 20 | 21 | 22 | 23 | 24 | 25 | 26 | 27 | 28 | 29 | 30 | 31 | 32 | 33 | 34 | 35 | 36 | 37 | 38 | 39 | 40 | | |
|-----------------|---|---|---|---|---|---|---|---|---|----|----|----|----|----|----|----|----|----|----|----|----|----|----|----|----|----|----|----|----|----|----|----|----|----|----|----|----|----|----|----|--|--|
| Points Earned | | | | | | | | | | | | | | | | | | | | | | | | | | | | | | | | | | | | | | | | | | |

Key: **1/2** = x points earned out of y possible points. **Blank space** = no answer. **N/A** = item not administered.

Page 3 of 4

Reporting Category and Item Level Information

Each content area has reporting categories that correspond to the content domains (topics) of our state’s content standards: the [RI Core Standards for ELA/Literacy](#) and [RI Core Standards for Mathematics](#).

For example, ELA has 3 reporting categories: Reading, Language, and Writing. Mathematics has 4-5 reporting categories that vary by grade level, but may include domains like Number & Operations, Measurement & Data, and Geometry.

The Reporting Category chart shows how many points your child earned for each category, the total possible points for the category, and the average points earned for your child’s school, district, and the state. It also lists the statewide average of points earned for students who performed at close to a proficient score.

English Language Arts

Mathematics

How your child performed in each reporting category and on each individual test question

| Reporting Category | Points Earned by Your Child | Total Possible Points | Average Points | | | Average Points Earned by Students Meeting Expectations |
|--------------------|-----------------------------|-----------------------|----------------|----------|-------|--------------------------------------------------------|
| | | | School | District | State | |
| Reading | | | | | | |
| Language† | | | | | | |
| Writing‡ | | | | | | |

† The Language reporting category includes the standard English convention scores from the essays.
‡ The Writing reporting category is based on the idea development essay scores.

Individual Test Questions

| | | | | | | | | | | | | | | | | | | | | | | | | | | | | | | | | | | | | | | |
|-----------------|---|---|---|---|---|---|---|---|---|----|----|----|----|----|----|----|----|----|----|----|----|----|----|----|----|----|----|----|----|----|--|--|--|--|--|--|--|--|
| Question Number | 1 | 2 | 3 | 4 | 5 | 6 | 7 | 8 | 9 | 10 | 11 | 12 | 13 | 14 | 15 | 16 | 17 | 18 | 19 | 20 | 21 | 22 | 23 | 24 | 25 | 26 | 27 | 28 | 29 | 30 | | | | | | | | |
| Points Earned | | | | | | | | | | | | | | | | | | | | | | | | | | | | | | | | | | | | | | |

Key x/y = x points earned out of y possible points
ID = Essay idea development score Blank space = no answer N/A = Item not administered
CV = Essay conventions score

How your child performed in each reporting category and on each individual test question

| Reporting Category | Points Earned by Your Child | Total Possible Points | Average Points | | | Average Points Earned by Students Meeting Expectations |
|--------------------|-----------------------------|-----------------------|----------------|----------|-------|--------------------------------------------------------|
| | | | School | District | State | |
| | | | | | | |
| | | | | | | |
| | | | | | | |
| | | | | | | |
| | | | | | | |
| | | | | | | |

Individual Test Questions

| | | | | | | | | | | | | | | | | | | | | | | | | | | | | | | | | | | | | | | | | | | | | | | | |
|-----------------|---|---|---|---|---|---|---|---|---|----|----|----|----|----|----|----|----|----|----|----|----|----|----|----|----|----|----|----|----|----|----|----|----|----|----|----|----|----|----|----|--|--|--|--|--|--|--|
| Question Number | 1 | 2 | 3 | 4 | 5 | 6 | 7 | 8 | 9 | 10 | 11 | 12 | 13 | 14 | 15 | 16 | 17 | 18 | 19 | 20 | 21 | 22 | 23 | 24 | 25 | 26 | 27 | 28 | 29 | 30 | 31 | 32 | 33 | 34 | 35 | 36 | 37 | 38 | 39 | 40 | | | | | | | |
| Points Earned | | | | | | | | | | | | | | | | | | | | | | | | | | | | | | | | | | | | | | | | | | | | | | | |

Key x/y = x points earned out of y possible points Blank space = no answer N/A = Item not administered

This display shows how many points your child earned on each question on the test. Points are displayed as “x/y”, where “x” is the points your child earned and “y” is the total possible points for that item (e.g., 2/3 means the student received 2 out of 3 possible points). Learn more about the items students experience at www.ride.ri.gov/RICAS-Released-Items

This information can be used, in conjunction with released items, item descriptions, and other materials, to see where your child is succeeding and where they may need additional support to enhance specific content area skills needed to master grade-level standards.