

Rhode Island's NECAP Science Results for Students in Grades 4, 8, and 11

May 2014 Test Administration



Deborah A. Gist, Commissioner

Rhode Island Department of Elementary and Secondary Education

255 Westminster Street

Providence, RI 02903

(401) 222-4600

[v.12.16.14]

The New England Common Assessment Program (NECAP) Science Assessment is the result of collaboration among New Hampshire, Rhode Island, and Vermont to build a set of tests for grades 3 through 8 and 11 to meet the requirements of the No Child Left Behind Act (NCLB). The purposes of the NECAP Science tests are as follows: (1) provide data on student achievement in science at grades 4, 8, and 11 to meet the requirements of NCLB; (2) provide information to support program evaluation and improvement; and (3) provide information regarding student and school performance to both parents and the public. The tests are constructed to meet rigorous technical criteria, to include universal design elements and accommodations to allow all students access to test content, and to gather reliable student demographic information for accurate reporting. It is important to note that NECAP results are provided to districts, schools, and families for use as one piece of evidence about progress and learning that occurred on the respective grade-span expectations (GSEs) of elementary (K-4), middle (5-8) and high schools (9-11).

In September we received the preliminary results from our testing company, and we shared these results with each school district for local review. At that time, Commissioner Gist raised concerns about the results, particularly in grade 8, and several school superintendents noted that some of their otherwise high-performing students received zero credit on some test items. To ensure that the results were accurate, RIDE decided to undertake a review of the science assessments and of the scoring process and to hold off on release of the assessment results until we completed this review.

The results of this review demonstrated the assessment itself and the scoring process met all technical requirements needed to report accurate results. RIDE did, however, find a couple of items on the science assessment for grades 4 and grade 8 that were borderline in meeting these requirements. These items are included in the part of the assessment known as the “inquiry task”. The inquiry task asks students to design or critique scientific investigations, to analyze data, and to draw conclusions or explanations. Examples of these inquiry tasks can be found on the RIDE website, under “practice tests,” on this page:

<http://www.ride.ri.gov/InstructionAssessment/Science/NECAPScience.aspx#17622-resources>

Upon review of both the items and student responses used as scoring benchmarks RIDE found:

- The wording on some of the items was unclear and could have led to an incorrect student response.
- A small percentage of students who received zero points on the inquiry task should have received partial credit.

Caution should be taken when reviewing scores on the “inquiry task” of individual students who took the assessment in grade 4 or grade 8 and with in districts and schools with a small number of students. However, the overall scores and proficiency levels are accurate at the state level.

NOTE 1: The New England Common Assessment Program (NECAP) Science Assessment is the result of collaboration among New Hampshire, Rhode Island, and Vermont to build a set of tests for grades 3 through 8 and 11 to meet the requirements of the No Child Left Behind Act (NCLB). The purposes of the NECAP Science tests are as follows: (1) provide data on student achievement in science at grades 4, 8, and 11 to meet the requirements of NCLB; (2) provide information to support program evaluation and improvement; and (3) provide information regarding student and school performance to both parents and the public. The tests are constructed to meet rigorous technical criteria, to include universal design elements and accommodations to allow all students access to test content, and to gather reliable student demographic information for accurate reporting. It is important to note that NECAP results are provided to districts, schools, and families for use as one piece of evidence about progress and learning that occurred on the respective grade-span expectations (GSEs) of elementary (K-4), middle (5-8) and high schools (9-11).

NOTE 2: Throughout this report, *statistical significance* is reported to indicate whether reported differences (e.g., increases or decreases in the percentage of students achieving *proficiency* or higher) in this year's NECAP results are *significantly* different from results reported in previous years. For each table presented in this report, please note the key to determine the meaning of color-coded cells. In general, if a cell is colored **green**, then the reported difference indicates that the percentage of students achieving *proficiency* or higher, for example, is statistically significantly **higher** than previous results whereas if the cell is **red**, then the reported difference indicates that the percentage of students achieving *proficiency* or higher is statistically significantly **lower** than previous results. All other reported differences are thus not considered statistically significant, regardless of how large or small they appear to be. Please see Appendix B for a full discussion on how statistical significance was calculated and how to interpret statistical significance.

NOTE 3: Throughout this report, the percentage of students scoring *Proficient* or higher refers to the cumulative percentage of students scoring at the *Proficient* and *Proficient with Distinction* levels of achievement. See Appendix A for descriptions of each of the levels.

NOTE 4: Multiple data points are needed for trend analysis. A single year's test results provide limited information about a school or district. As with any evaluation, test results are most meaningful when compared with other indicators and when examined over several years for long-term trends in student performance. This is especially true in small schools where changes in student cohorts from year to year can have a noticeable influence on test results. Because measures of student achievement often change incrementally over short periods of time, RIDE presents most state-, district-, and school-level results in this report as a series of multiple-year views in order to reveal achievement trends that have occurred over several years. In addition, RIDE presents last year's results to illustrate a one-year view. In general, over the seven-year period between 2008 and 2014, a statistically significant increase indicates improvement that has been sustained. Conversely, a statistically significant decrease indicates a sustained decline in achievement.

TABLE OF CONTENTS

Executive Summary	3
--------------------------------	---

Section 1: Statewide Results

Rhode Island Statewide Comparisons by Grade Level	5
NECAP State Comparisons	6
Student Group Performance.....	7
Achievement Gaps	10
Grade 8 NAEP Science Results	11

Section 2: District Results

Percent of Students at/above Proficient by District and School Level ¹	12
---	----

Section 3: School Results

Percent of Students at/above Proficient by School	16
---	----

Appendices

Appendix A. Glossary of Terms.....	25
Appendix B. Calculating Standard Error (SE)	26

¹ School Level in this report refers to Elementary, Middle, and High School.

EXECUTIVE SUMMARY

The seventh administration of the Science New England Common Assessment Program (NECAP) tests took place May 5-22, 2014. A total of 30,794 Rhode Island public school students in grades four, eight, and eleven participated in NECAP Science test.

STATE-LEVEL RESULTS

Overall Achievement

Results of the spring 2014 NECAP Science test revealed that at the *state level*,² roughly 32 percent of all Rhode Island public school students were proficient or above in science (down 2 percentage points from the May 2013 administration). While all three tested grades had significantly higher percentages of students achieving proficiency compared to the first administration of the science test back in 2008, none posted gains in 2014 compared to 2013. Scores for students in grades 4 and 11 were essentially the same as last year while grade 8 students posted a statistically significant decrease in the percentage of students scoring in the *Proficient* and *Proficient with Distinction* categories.

Since the first administration of the NECAP Science Assessment back in 2008, Rhode Island has seen the largest growth in student achievement at all grade levels among the NECAP states. In 2014, Rhode Island's 4th graders' scores remained constant compared to last year while their peers in New Hampshire and Vermont posted a 5 and 3 percentage point *decrease* respectively in the percent achieving proficiency or above. Results indicate, however, that Rhode Island's 4th graders still lag behind their peers in both New Hampshire and Vermont. Results at grade 8 indicate that New Hampshire and Vermont students out-perform Rhode Island's 8th graders by 2 and 2 percentage points respectively while at grade 11, the gap between our students and their peers in both New Hampshire and Vermont has been eliminated. For the first time, Rhode Island's 11th graders have out-performed their peers in New Hampshire and equaled the performance of their peers in Vermont.

Achievement Gaps³

Statewide (*all grades combined*), the achievement gaps in Science between IEP and Non-IEP students LEP and Non-LEP students, and between Low-Income and Non-Low Income students narrowed this year. However, all gaps at all grade levels are notably wider than they were back in 2008. The only exception is the gap between Low-Income and Non-Low Income students in grade 4, which has only widened by about 2 percentage points from 2008- to 2014. By comparison, other grade-level gaps have

² All grades combined for a single aggregated result.

³ An achievement gap is a difference in what distinct groups of students know and can do in important subjects such as reading, math, or science. One way we find achievement gaps is by comparing test performances of different groups of students. One way we describe gaps is by subtracting the average of a lower scoring group from the average of a higher scoring group.

widened by about 5 percentage points (e.g., Gr. 8 IEP/Non-IEP gap) to more than 14 percentage points (e.g., Gr. 11 LEP/Non-LEP gap).

In terms of overall performance, Hispanic students in grade 11 and low-income students in grade 11 were the only students to post significant gains in 2014 compared to last year. However, compared to the very first administration of the NECAP Science assessment back in 2008 nearly all student groups posted significant gains in 2014. The only group to post a significant decrease from 2008 to 2014 was 4th grade students with IEPs, who performed 7 percentage points lower.

DISTRICT⁴ RESULTS

Compared to last year's results, there was very little change at the district level in 2014 in terms of student achievement in Science. When all grades are combined to derive a single overall proficiency rate for the entire district, none of Rhode Island's districts posted a significant gain in Science while 5 posted a significant decrease in overall student performance. For all other districts, scores were essentially the same as last year. By comparison, 21 districts posted significant gains in science this year compared to their performance on the very first administration of the NECAP Science test back in 2008.

SCHOOL RESULTS

Results at the school level mirrored those of district level in that for the vast majority, Science results were not significantly different than last year's. A total of 4 schools (all of which are high schools) posted significant increases in the percentage of students achieving proficiency or above in Science while 20 posted significant decreases in 2014. Over the seven-year period from 2008 to 2014, a total of 54 schools made gains while only 4 schools had lower percentages.

CONCLUSION

While Rhode Island had a 2 percentage point decrease overall in the percentage of students who achieved *Proficient* or above on the NECAP Science test, there are some notable pieces of good news:

- Rhode Island's 4th graders scored 5 percentage points higher in 2014 than in 2008 whereas their peers in New Hampshire and Vermont scored 5 and 4 percentage points lower over the same time period.

⁴ Throughout this report, the term "district" is used as an inclusive identifier of both traditional districts and charter schools, both of which are "Local Education Agencies" or LEAs.

- Rhode Island's 8th graders scored 4 percentage points higher in 2014 than in 2008 whereas their peers in New Hampshire and Vermont scored 1 and 2 percentage points lower over the same time period.
- Rhode Island's 11th graders scored 14 percentage points higher in 2014 than in 2008 whereas their peers in New Hampshire and Vermont scored 7 and 5 percentage points higher over the same time period.
- For the first time, Rhode Island's 11th graders have out-performed their peers in New Hampshire and equaled the performance of their peers in Vermont.
- Rhode Island's 11th grade Low-Income students scored significantly higher this year than last year.
- Rhode Island's 11th grade Hispanic students scored significantly higher this year than last year.
- Four Rhode Island high schools performed significantly higher than last year and two of those high schools (North Kingstown Senior High School and North Smithfield High School) have also made significant gains since 2008.

STATE-LEVEL RESULTS

Table 1. NECAP Science Statewide Results by Achievement Level.

Grade	2008						2013						2014						Total % Prof. Difference 2013-2014	Total % Prof. Difference 2008-2014
	% SBP	% PP	% P	% PwD	Total % Prof.	SE	% SBP	% PP	% P	% PwD	Total % Prof.	SE	% SBP	% PP	% P	% PwD	Total % Prof.	SE		
ALL	33.1	43.1	23.1	.8	23.8	.2	23.5	42.7	32.6	1.1	33.8	.3	24.2	44.1	30.5	1.2	31.7	.3	-2.1	7.9
4th	21.8	41.8	35.2	1.2	36.4	.5	18.6	40.5	39.8	1.1	40.9	.5	19.1	39.6	40.5	0.8	41.3	.5	0.4	4.9
8th	38.0	43.3	18.3	.4	18.7	.4	26.9	43.3	28.9	.9	29.8	.5	29.3	47.9	22.1	0.7	22.8	.4	-7.0	4.1
11th	39.3	44.3	15.7	.7	16.4	.4	25.3	44.6	28.6	1.5	30.1	.5	24.5	45.4	28.1	2.0	30.1	.5	0.0	13.7

Key (see Appendix A for performance level descriptors)

SBP = Substantially Below Proficient

PP = Partially Proficient

P = Proficient

PwD = Proficient with Distinction

Total % Prof. = P + PwD

SE = Standard error (see Appendix B)

■ = Statistically significant *decrease* in percent of students *proficient* or above

■ = Statistically significant *increase* in percent of students *proficient* or above

= No statistically significant difference between comparison years

Figure 1. NECAP Science Statewide Results: 2008-2014 Grade-Level Comparisons.

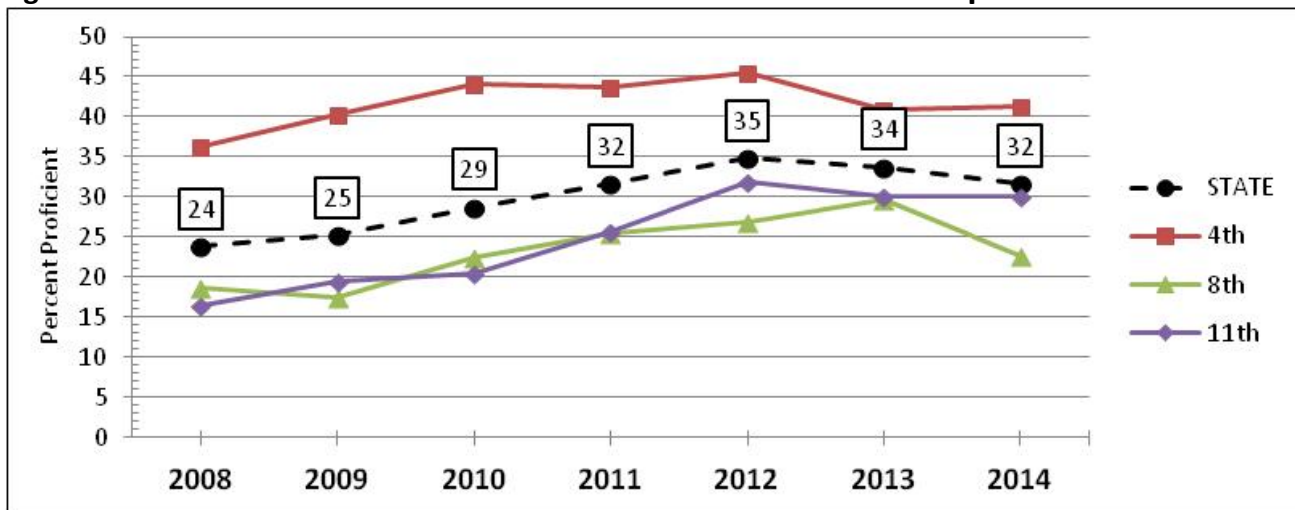


Table 2. 2008 to 2014 NECAP State Comparisons: Grade 4 Students⁵

Testing Year	Grade 4		
	<i>Rhode Island</i>	<i>New Hampshire</i>	<i>Vermont</i>
2008	36	51	48
2009	40	53	52
2010	44	54	54
2011	44	55	53
2012	46	53	53
2013	41	51	47
2014	41	46	44
2008 to 2014 Change	+5	-5	-4

Table 3. 2008 to 2014 NECAP State Comparisons: Grade 8 Students⁶

Testing Year	Grade 8		
	<i>Rhode Island</i>	<i>New Hampshire</i>	<i>Vermont</i>
2008	19	26	27
2009	18	24	25
2010	23	27	29
2011	25	28	29
2012	27	32	30
2013	30	31	32
2014	23	25	25
2008 to 2014 Change	+4	-1	-2

Table 4. 2008 to 2014 NECAP State Comparisons: Grade 11 Students⁷

Testing Year	Grade 11		
	<i>Rhode Island</i>	<i>New Hampshire</i>	<i>Vermont</i>
2008	16	22	25
2009	19	24	27
2010	21	24	28
2011	26	27	31
2012	32	33	33
2013	30	30	31
2014	30	29	30
2008 to 2014 Change	+14	+7	+5

⁵ All percentages have been rounded to the nearest whole number.⁶ All percentages have been rounded to the nearest whole number.⁷ All percentages have been rounded to the nearest whole number.

Table 5. Statewide Student Group Percent “Proficient” in Science: 2008 to 2014.

Student Group	Grade 4					Grade 8					Grade 11				
	% Prof. 2008	% Prof. 2013	% Prof. 2014	Total % Proficient Difference: 2013-2014	Total % Proficient Difference: 2008-2014	% Prof. 2008	% Prof. 2013	% Prof. 2014	Total % Proficient Difference: 2013-2014	Total % Proficient Difference: 2008-2014	% Prof. 2008	% Prof. 2013	% Prof. 2014	Total % Proficient Difference: 2013-2014	Total % Proficient Difference: 2008-2014
STATE AVERAGE	36.4	40.9	41.3	0.4	4.9	18.7	29.7	22.8	-7.0	4.1	16.4	30.1	30.1	0.0	13.7
Males	35.5	38.7	38.3	-0.4	2.8	19.7	29.8	23.7	-6.1	4.0	17.1	30.8	29.8	-1.0	12.7
Females	37.4	43.0	44.4	1.4	7.0	17.8	29.7	21.8	-7.9	4.0	15.8	29.4	30.5	1.0	14.7
IEP	17.9	10.0	10.9	0.9	-7.0	4.2	4.5	2.9	-1.6	-1.3	2.8	4.7	4.2	-0.5	1.4
Non-IEP	40.2	45.4	45.8	0.5	5.7	21.9	34.1	26.0	-8.1	4.1	18.9	34.1	34.2	0.0	15.3
LEP	5.2	6.4	5.6	-0.8	0.4	1.4	2.0	0.8	-1.3	-0.6	0.4	0.8	0.0	-0.8	-0.4
LEP Monitored	17.5	26.4	29.1	2.7	11.6	1.4	13.2	4.5	-8.7	3.1	0.0	3.9	11.1	7.2	11.1
Non-LEP	39.1	44.1	44.9	0.7	5.8	19.6	31.3	24.2	-7.1	4.6	17.0	31.5	31.5	-0.1	14.4
Low Income	18.2	24.1	24.8	0.7	6.5	5.4	11.9	8.7	-3.2	3.3	4.6	13.0	15.4	2.3	10.7
Non-Low Income	49.9	57.5	58.6	1.0	8.7	27.0	44.9	35.8	-9.1	8.8	20.8	41.4	40.4	-1.0	19.6
American Indian	22.1	25.8	12.8	-13.0	-9.2	8.1	17.1	10.9	-6.2	2.9	11.5	24.3	17.2	-7.1	5.7
Asian	36.3	38.1	41.0	2.9	4.6	18.3	32.3	27.5	-4.8	9.2	22.1	31.3	34.9	3.6	12.8
Black	16.4	20.2	19.0	-1.1	2.7	4.4	8.6	5.3	-3.4	0.9	2.6	9.4	11.8	2.5	9.2
Hispanic	12.9	20.3	20.0	-0.3	7.1	2.3	8.6	5.7	-2.9	3.4	3.1	9.2	12.3	3.1	9.2
White	46.2	51.4	53.6	2.2	7.4	24.9	39.5	31.1	-8.4	6.2	20.5	38.7	38.1	-0.6	17.6

■ = Statistically significant *decrease* in percent of students *proficient* or above

■ = Statistically significant *increase* in percent of students *proficient* or above

□ = No statistically significant difference between comparison years

Figure 2. Grade 4 Student Group Performance: RACE/ETHNICITY

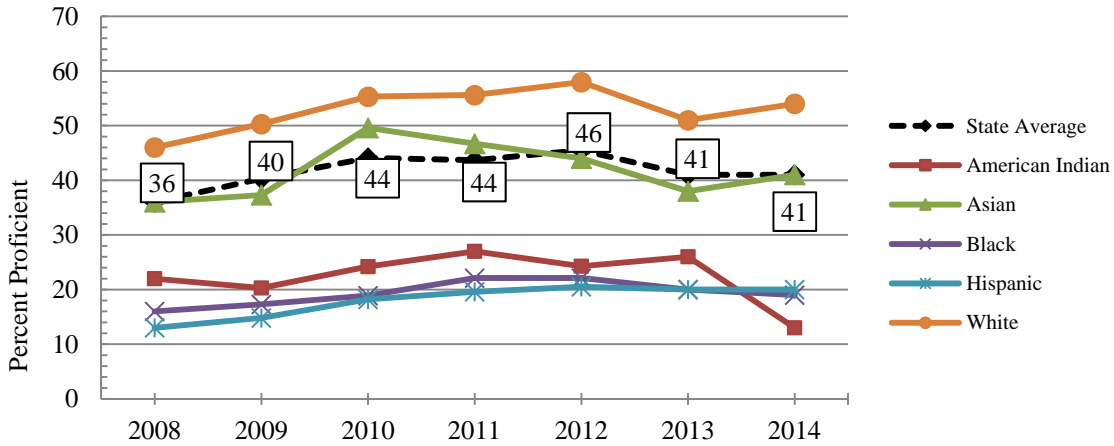


Figure 3. Grade 8 Student Group Performance: RACE/ETHNICITY

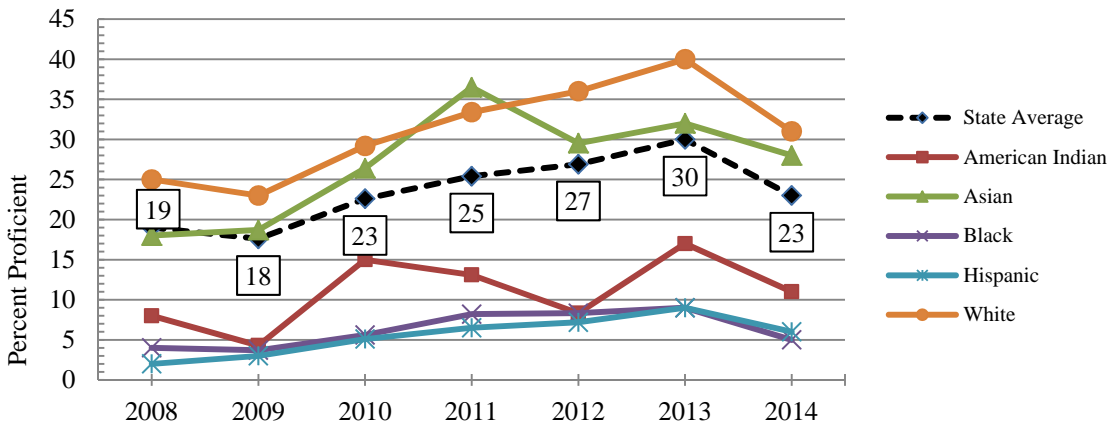


Figure 4. Grade 11 Student Group Performance: RACE/ETHNICITY

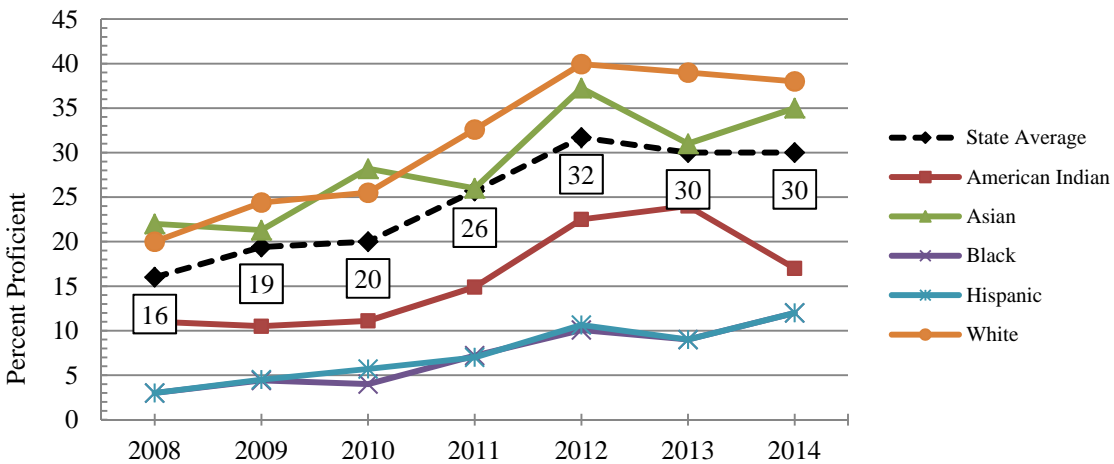


Figure 5. Grade 4 Student Group Performance: IEP, LEP, LEP MONITORED, LOW INCOME

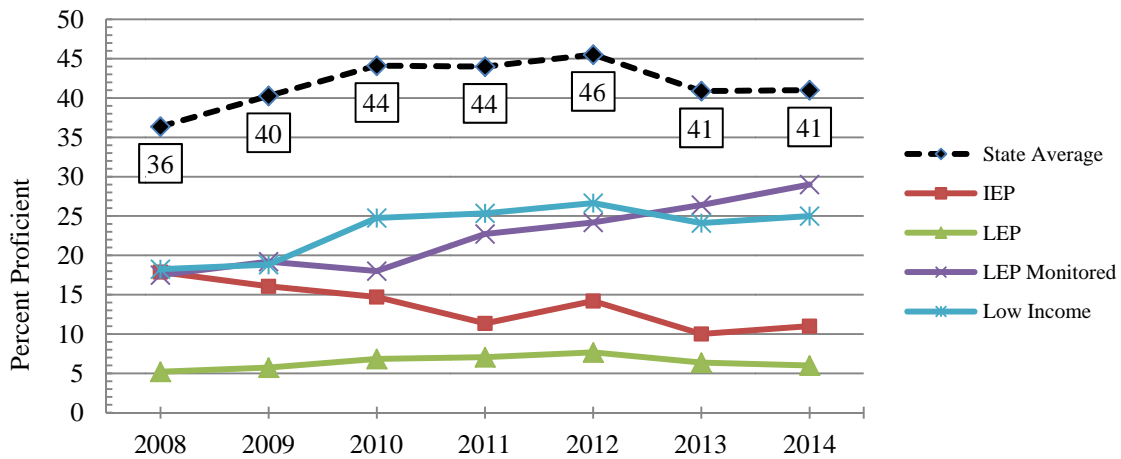


Figure 6. Grade 8 Student Group Performance: IEP, LEP, LEP MONITORED, LOW INCOME

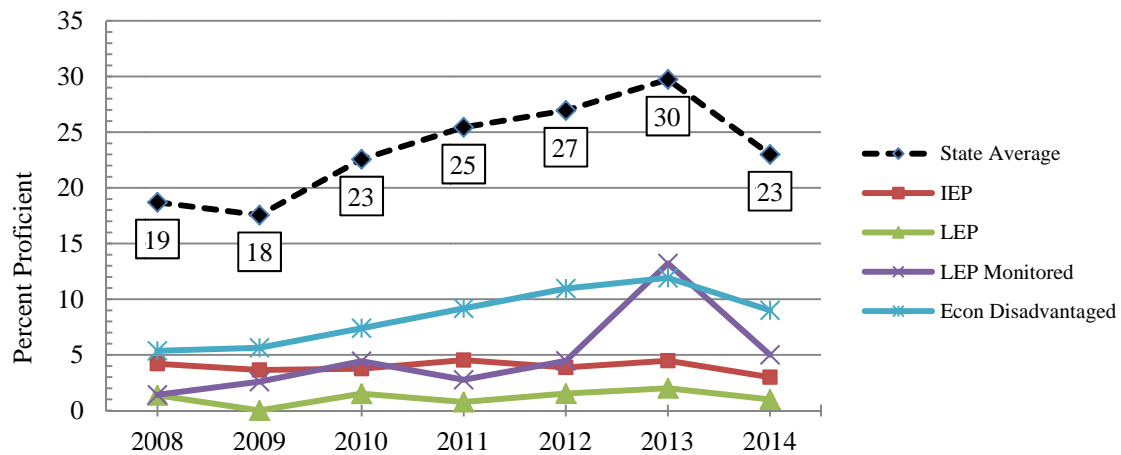
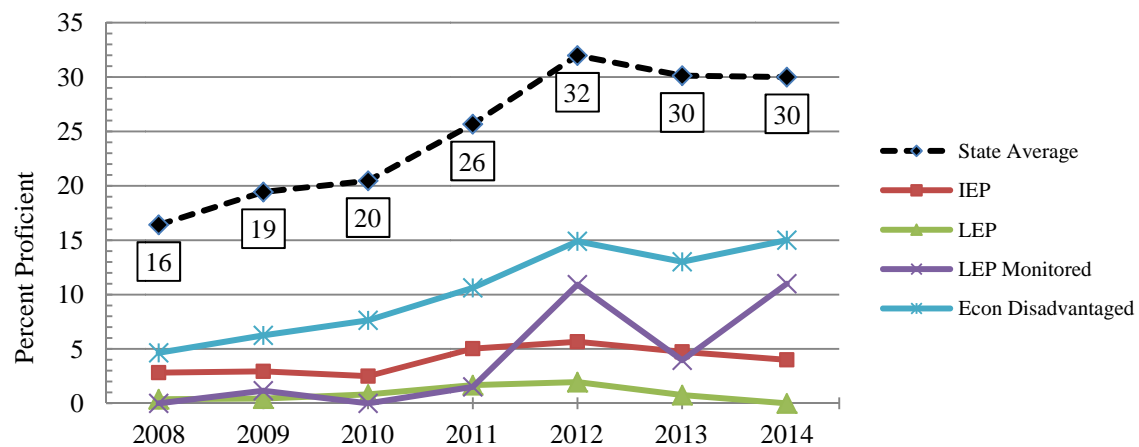


Figure 7. Grade 11 Student Group Performance: IEP, LEP, LEP MONITORED, LOW INCOME



SCIENCE ACHIEVEMENT GAP DATA:

Table 6. Student Group⁸ *Percent Proficient* Achievement Gaps⁹ on the NECAP SCIENCE Test: 2008 to 2014.

Grade	IEP : Non-IEP Gap							LEP : Non-LEP Gap							Low-Income : Non-Low Income Gap						
	2008	2009	2010	2011	2012	2013	2014	2008	2009	2010	2011	2012	2013	2014	2008	2009	2010	2011	2012	2013	2014
Statewide¹⁰	18.6	21.2	26.2	28.5	31.7	31.8	29.6	21.9	23.3	26.1	29.1	32.4	32.0	30.6	21.4	23.8	25.6	28.3	30.8	30.8	28.2
4th	22.3	28.8	34.3	36.6	36.2	35.4	35.0	33.9	37.1	40.4	40.0	41.3	37.8	39.3	31.6	37.5	36.6	35.6	37.5	33.4	33.8
8th	17.7	16.8	22.7	24.3	27.4	29.7	23.2	18.2	18.3	22.1	25.9	26.9	29.3	23.4	21.6	19.9	26.3	29.3	30.1	33.0	27.1
11th	16.0	19.1	21.1	23.6	30.6	29.4	29.9	16.7	19.6	20.3	24.9	31.3	30.8	31.5	16.2	19.1	19.8	23.7	27.5	28.4	25.1

Table 7. Student Group *Scale Score*¹¹ Achievement Gaps on the NECAP SCIENCE Test: 2008 to 2014.

Grade	IEP : Non-IEP Gap							LEP : Non-LEP Gap							Low-Income : Non-Low Income Gap						
	2008	2009	2010	2011	2012	2013	2014	2008	2009	2010	2011	2012	2013	2014	2008	2009	2010	2011	2012	2013	2014
4th	8.1	9.9	10.8	12.7	12.5	12.4	12.1	13.6	13.3	14.2	13.9	16.5	14.5	15.1	9.8	10.3	10.1	10.1	10.7	9.3	9.5
8th	9.0	10.1	10.6	10.8	10.8	10.7	10.5	12.1	14.0	13.6	15.8	13.4	14.0	15.4	8.1	8.6	8.9	9.4	8.7	8.7	8.5
11th	9.4	9.8	9.7	10.0	10.6	9.6	10.1	10.2	13.6	11.3	12.1	13.9	13.1	12.7	5.6	6.5	5.7	5.7	6.7	6.7	6.4

⁸ Eligibility for free or reduced price meal benefits through the National School Lunch Program is the most commonly used indicator of economic disadvantage.

⁹ An achievement gap is a difference in what distinct groups of students know and can do in important subjects such as reading or math. One way we find achievement gaps is by comparing test scores for groups of students. One way we describe gaps is by subtracting the average of a lower scoring group from the average of a higher scoring group.

¹⁰ Statewide = all grades combined.

¹¹ Because scale scores differ across grades, it is not possible to create an aggregated “state” scale score for comparison purposes in this table.

GRADE 8 NAEP SCIENCE RESULTS: 2009 AND 2011

Table 8. Statewide Grade 8 Student Group Percent *Proficient* in NAEP Science: 2009 to 2011.

Student Group	Grade 8		
	% Prof. 2009	% Prof. 2011	Total % Prof. Difference: 2009-2011
STATE AVERAGE	26	31	5
Males	30	34	5
Females	22	27	5
IEP	7	10	3
Non-IEP	30	35	5
LEP	-	0	0
LEP Monitored	-	-	-
Non-LEP	26	32	5
Low Income	9	14	5
Non-Low Income	36	43	7
American Indian	-	-	-
Asian	21	35	14
Black	8	10	2
Hispanic	5	5	0
White	33	40	7

In this section, overall NAEP Science results for Rhode Island’s 8th grade students are reported along with results from the other New England states. Results are reported as the percentages of students performing relative to performance standards set by the National Assessment Governing Board. The percentages are estimates based on samples of students rather than on entire populations. Therefore, comparisons between years are based on statistical tests that consider both the size of the differences and the standard errors of the two statistics being compared.

In both 2009 and 2011, approximately 2,300 8th grade students in Rhode Island were assessed in NAEP science. The percentage of Rhode Island students who performed at or above *Proficient* increased 5 points from 26% in 2009 up to 31% in 2011. While Rhode Island’s 2011 performance was not significantly different from the reported national average (31 percent) that year, it did represent a trend of improvement in science achievement for Rhode Island’s students. This trend is mirrored in the performance on NECAP Science over the years where students in grades 4, 8, and 11 have continued to improve since the first administration of this assessment back in 2008.

- = Statistically significant *decrease* in percent of students *proficient* or above
- = Statistically significant *increase* in percent of students *proficient* or above
- = No statistically significant difference between comparison years

NOTE: Differences in % proficient between 2009 and 2011 reflect statistical analysis using unrounded figures and may therefore deviate from calculations using the figures above.

Table 9. 2009 to 2011 percent of 8th grade students at/above *Proficient*: NAEP Science results by state.

Testing Year	Grade 8					
	<i>Rhode Island</i>	<i>New Hampshire</i>	<i>Vermont</i>	<i>Maine</i>	<i>Massachusetts</i>	<i>Connecticut</i>
2009	26	39	-	35	41	35
2011	31	42	43	37	44	35
2009-2011 Change	+5	+3	-	+2	+2	0

- = Statistically significant *decrease* in percent of students *proficient* or above
- = Statistically significant *increase* in percent of students *proficient* or above
- = No statistically significant difference between comparison years

NOTE: Differences in % proficient between 2009 and 2011 reflect statistical analysis using unrounded figures and may therefore deviate from calculations using the figures above.

DISTRICT RESULTS

Table 10. Percent of Students At/Above “Proficient” in Science by District and School Level.

District	School Level	N 2008	% Prof. 2008	SE 2008	N 2013	% Prof. 2013	SE 2013	N 2014	% Prof. 2014	SE 2014	% Prof. Difference: 2013-2014	% Prof. Difference: 2008-2014
Barrington	All Schools Combined	827	63.0	1.7	802	65.6	1.7	828	62.7	1.7	-2.9	-0.3
	Elementary	245	70.2	2.9	273	67.8	2.8	258	66.3	2.9	-1.5	-3.9
	Middle	299	64.2	2.8	259	71.8	2.8	296	55.1	2.9	-16.7	-9.1
	High	283	55.5	3.0	270	57.4	3.0	274	67.5	2.8	10.1	12.0
Beacon Charter	High	21	4.8	4.6	52	26.9	6.2	52	17.3	5.2	-9.6	12.5
Blackstone Academy	High	37	2.7	2.7	39	25.6	7.0	39	15.4	5.8	-10.3	12.7
Blackstone Valley Prep	All Schools Combined	n/a	n/a	n/a	n/a	n/a	n/a	169	36.1	3.7	n/a	n/a
	Elementary	n/a	n/a	n/a	n/a	n/a	n/a	81	54.3	5.5	n/a	n/a
	Middle	n/a	n/a	n/a	n/a	n/a	n/a	88	19.3	4.2	n/a	n/a
Bristol-Warren	All Schools Combined	783	28.0	1.6	753	42.1	1.8	695	34.5	1.8	-7.6	6.6
	Elementary	253	46.6	3.1	290	51.7	2.9	238	40.3	3.2	-11.4	-6.3
	Middle	282	19.1	2.3	237	30.8	3.0	253	26.5	2.8	-4.3	7.3
	High	248	19.0	2.5	226	41.6	3.3	204	37.7	3.4	-3.8	18.8
Burrillville	All Schools Combined	564	25.9	1.8	536	36.4	2.1	550	30.9	2.0	-5.5	5.0
	Elementary	166	39.8	3.8	200	42.0	3.5	180	38.3	3.6	-3.7	-1.4
	Middle	214	29.9	3.1	170	44.7	3.8	196	25.0	3.1	-19.7	-4.9
	High	184	8.7	2.1	166	21.1	3.2	174	29.9	3.5	8.8	21.2
Central Falls	All Schools Combined	705	7.2	1.0	560	12.9	1.4	574	10.5	1.3	-2.4	3.2
	Elementary	264	15.2	2.2	221	20.8	2.7	247	13.0	2.1	-7.9	-2.2
	Middle	275	1.5	.7	144	7.6	2.2	134				
	High	166	4.2	1.6	195	7.7	1.9	193	14.0	2.5	6.3	9.8
Chariho	All Schools Combined	857	34.5	1.6	819	55.6	1.7	750	56.3	1.8	0.7	21.7
	Elementary	266	54.1	3.1	237	71.7	2.9	235	75.7	2.8	4.0	21.6
	Middle	297	30.0	2.7	302	56.6	2.9	225	60.9	3.3	4.3	30.9
	High	294	21.4	2.4	280	40.7	2.9	290	36.9	2.8	-3.8	15.5
Coventry	All Schools Combined	1308	30.6	1.3	1117	46.8	1.5	1139	43.9	1.5	-2.9	13.3
	Elementary	413	46.2	2.5	368	52.7	2.6	376	54.8	2.6	2.1	8.5
	Middle	469	31.1	2.1	361	47.6	2.6	393	35.4	2.4	-12.3	4.2
	High	426	14.8	1.7	388	40.5	2.5	370	41.9	2.6	1.4	27.1
Cranston	All Schools Combined	2524	26.4	.9	2388	36.1	1.0	2363	31.3	1.0	-4.8	4.9
	Elementary	781	50.3	1.8	804	45.1	1.8	844	46.1	1.7	0.9	-4.2
	Middle	902	17.4	1.3	743	32.3	1.7	767	19.7	1.4	-12.6	2.3
	High	841	13.8	1.2	841	30.9	1.6	752	26.6	1.6	-4.3	12.8
Cumberland	All Schools Combined	1144	26.6	1.3	1041	38.9	1.5	1007	41.5	1.6	2.6	14.9
	Elementary	372	40.1	2.5	371	38.8	2.5	367	48.5	2.6	9.7	8.4
	Middle	436	21.1	2.0	360	43.1	2.6	303	32.7	2.7	-10.4	11.6
	High	336	18.8	2.1	310	34.2	2.7	337	41.8	2.7	7.6	23.1
Davies Career and Tech.	High	157	3.2	1.4	176	30.1	3.5	211	27.5	3.1	-2.6	24.3
DCYF	High	6			13			8				

2014 Rhode Island NECAP Science Results

District	School Level	N 2008	% Prof. 2008	SE 2008	N 2013	% Prof. 2013	SE 2013	N 2014	% Prof. 2014	SE 2014	% Prof. Difference: 2013-2014	% Prof. Difference: 2008-2014
East Greenwich	All Schools Combined	593	46.9	2.0	533	67.4	2.0	595	61.0	2.0	-6.3	14.1
	Elementary	200	58.0	3.5	192	59.9	3.5	202	68.3	3.3	8.4	10.3
	Middle	216	43.5	3.4	157	76.4	3.4	200	57.5	3.5	-18.9	14.0
	High	177	38.4	3.7	184	67.4	3.5	193	57.0	3.6	-10.4	18.6
East Providence	All Schools Combined	1369	18.3	1.0	1088	30.5	1.4	1130	32.4	1.4	1.9	14.1
	Elementary	456	35.7	2.2	404	34.4	2.4	401	37.7	2.4	3.2	1.9
	Middle	472	10.8	1.4	352	16.2	2.0	381	16.8	1.9	0.6	6.0
	High	441	8.2	1.3	332	41.0	2.7	348	43.4	2.7	2.4	35.2
Exeter-West Greenwich	All Schools Combined	461	30.2	2.1	424	53.5	2.4	387	45.5	2.5	-8.1	15.3
	Elementary	136	36.8	4.1	145	55.9	4.1	120	60.8	4.5	5.0	24.1
	Middle	161	29.2	3.6	146	51.4	4.1	137	35.8	4.1	-15.6	6.6
	High	164	25.6	3.4	133	53.4	4.3	130	41.5	4.3	-11.8	15.9
Foster	Elementary	57	56.1	6.6	36	58.3	8.2	54	44.4	6.8	-13.9	-11.7
Foster-Glocester	All Schools Combined	443	16.5	1.8	321	32.1	2.6	304	29.3	2.6	-2.8	12.8
	Middle	224	18.8	2.6	149	28.2	3.7	149	33.6	3.9	5.4	14.8
	High	219	14.2	2.4	172	35.5	3.6	155	25.2	3.5	-10.3	11.0
Glocester	Elementary	130	50.0	4.4	97	39.2	5.0	83	54.2	5.5	15.0	4.2
Highlander	All Schools Combined	49	12.2	4.7	66	21.2	5.0	73	11.0	3.7	-10.3	-1.3
	Elementary	17	23.5	10.3	36	19.4	6.6	37	13.5	5.6	-5.9	-10.0
	Middle	32	6.3	4.3	30	23.3	7.7	36	8.3	4.6	-15.0	2.1
International	Elementary	49	10.2	4.3	52	36.5	6.7	54	51.9	6.8	15.3	41.6
Jamestown	All Schools Combined	102	35.3	4.7	104	63.5	4.7	107	56.1	4.8	-7.4	20.8
	Elementary	45	42.2	7.4	56	66.1	6.3	51	72.5	6.2	6.5	30.3
	Middle	57	29.8	6.1	48	60.4	7.1	56	41.1	6.6	-19.3	11.2
Johnston	All Schools Combined	733	30.2	1.7	669	33.2	1.8	618	31.9	1.9	-1.3	1.7
	Elementary	280	45.0	3.0	235	52.8	3.3	220	53.2	3.4	0.4	8.2
	Middle	272	24.3	2.6	215	21.9	2.8	219	19.2	2.7	-2.7	-5.1
	High	181	16.0	2.7	219	23.3	2.9	179	21.2	3.1	-2.1	5.2
Kingston Hill	Elementary	42	47.6	7.7	41	63.4	7.5	38	78.9	6.6	15.5	31.3
Lincoln	All Schools Combined	815	33.5	1.7	735	44.9	1.8	706	45.0	1.9	0.1	11.5
	Elementary	258	51.6	3.1	243	56.8	3.2	250	61.2	3.1	4.4	9.6
	Middle	292	24.7	2.5	242	34.3	3.1	205	28.3	3.1	-6.0	3.6
	High	265	25.7	2.7	250	43.6	3.1	251	42.6	3.1	-1.0	17.0
Little Compton	All Schools Combined	72	34.7	5.6	78	51.3	5.7	68	55.9	6.0	4.6	21.2
	Elementary	34	50.0	8.6	36	63.9	8.0	32	78.1	7.3	14.2	28.1
	Middle	38	21.1	6.6	42	40.5	7.6	36	36.1	8.0	-4.4	15.1
MET Career & Tech.	High	155	2.6	1.3	228	2.2	1.0	209	2.9	1.2	0.7	0.3
Middletown	All Schools Combined	493	30.6	2.1	502	44.0	2.2	484	40.5	2.2	-3.5	9.9
	Elementary	176	38.6	3.7	163	52.1	3.9	178	50.6	3.7	-1.6	11.9
	Middle	177	34.5	3.6	171	34.5	3.6	150	26.7	3.6	-7.8	-7.8
	High	140	15.7	3.1	168	45.8	3.8	156	42.3	4.0	-3.5	26.6
Narragansett	All Schools Combined	327	33.6	2.6	314	55.4	2.8	341	52.8	2.7	-2.6	19.1
	Elementary	77	50.6	5.7	97	60.8	5.0	107	72.0	4.3	11.1	21.3
	Middle	135	29.6	3.9	101	56.4	4.9	114	26.3	4.1	-30.1	-3.3
	High	115	27.0	4.1	116	50.0	4.6	120	60.8	4.5	10.8	33.9

2014 Rhode Island NECAP Science Results

District	School Level	N 2008	% Prof. 2008	SE 2008	N 2013	% Prof. 2013	SE 2013	N 2014	% Prof. 2014	SE 2014	% Prof. Difference: 2013-2014	% Prof. Difference: 2008-2014
New Shoreham	All Schools Combined	29	48.3	9.3	25	56.0	9.9	30	56.7	9.0	0.7	8.4
	Elementary	10	70.0	14.5	12	50.0	14.4	10	80.0	12.6	30.0	10.0
	High	19	36.8	11.1	13	61.5	13.5	20	45.0	11.1	-16.5	8.2
Newport	All Schools Combined	472	21.6	1.9	366	32.2	2.4	419	22.4	2.0	-9.8	0.8
	Elementary	179	34.6	3.6	146	39.0	4.0	151	30.5	3.7	-8.6	-4.2
	Middle	170	12.4	2.5	121	24.8	3.9	156	15.4	2.9	-9.4	3.0
North Kingstown	All Schools Combined	1060	36.7	1.5	923	53.1	1.6	935	55.9	1.6	2.8	19.2
	Elementary	322	56.8	2.8	270	64.1	2.9	303	71.6	2.6	7.5	14.8
	Middle	350	30.0	2.4	307	56.4	2.8	309	42.1	2.8	-14.3	12.1
North Providence	All Schools Combined	779	16.4	1.3	760	25.9	1.6	770	29.6	1.6	3.7	13.2
	Elementary	222	31.5	3.1	286	38.5	2.9	289	48.8	2.9	10.3	17.3
	Middle	276	11.2	1.9	231	9.5	1.9	245	6.9	1.6	-2.6	-4.3
North Smithfield	All Schools Combined	431	30.9	2.2	392	46.9	2.5	408	53.2	2.5	6.2	22.3
	Elementary	141	52.5	4.2	147	53.1	4.1	144	66.0	3.9	12.9	13.5
	Middle	148	13.5	2.8	133	52.6	4.3	118	39.0	4.5	-13.6	25.5
Paul Cuffee	All Schools Combined	142	27.5	3.7	112	32.1	4.4	146	52.1	4.1	19.9	24.6
	Elementary	86	20.9	4.4	172	20.3	3.1	174	13.2	2.6	-7.1	-7.7
	Middle	47	31.9	6.8	54	38.9	6.6	57	22.8	5.6	-16.1	-9.1
Pawtucket	All Schools Combined	39	7.7	4.3	58	17.2	5.0	60	11.7	4.1	-5.6	4.0
	Elementary	n/a	n/a	n/a	60	6.7	3.2	57	5.3	3.0	-1.4	n/a
	High	1860	11.2	.7	1891	15.0	.8	1869	14.0	0.8	-1.1	2.8
Portsmouth	All Schools Combined	660	17.1	1.5	761	25.5	1.6	775	21.2	1.5	-4.3	4.0
	Elementary	751	7.1	.9	655	4.6	.8	629	4.8	0.8	0.2	-2.3
	Middle	449	9.4	1.4	475	12.6	1.5	465	14.4	1.6	1.8	5.1
Providence	All Schools Combined	675	38.5	1.9	667	51.1	1.9	595	53.4	2.0	2.3	14.9
	Elementary	195	51.8	3.6	180	55.0	3.7	180	50.6	3.7	-4.4	-1.2
	Middle	256	30.1	2.9	206	49.0	3.5	195	51.3	3.6	2.3	21.2
Scituate	All Schools Combined	224	36.6	3.2	281	50.2	3.0	220	57.7	3.3	7.5	21.1
	Elementary	5134	5.3	.3	4647	12.4	.5	4718	12.1	0.5	-0.4	6.7
	Middle	1843	9.4	.7	1889	17.5	.9	1921	17.4	0.9	-0.1	7.9
RI Nurses Institute	All Schools Combined	1828	1.8	.3	1397	9.1	.8	1546	6.6	0.6	-2.5	4.8
	Elementary	1463	4.6	.6	1361	8.9	.8	1251	10.7	0.9	1.8	6.1
	High	n/a	n/a	n/a	70	1.4	1.4	47	8.5	4.1	7.1	n/a
RI Sch. for the Deaf	All Schools Combined	7			12			17				
	Elementary	4			4			6				
	Middle	1			5			3				
Scituate	All Schools Combined	2			3			8				
	Elementary	417	37.9	2.4	347	58.8	2.6	359	46.8	2.6	-12.0	8.9
	Middle	155	52.9	4.0	112	75.9	4.0	115	64.3	4.5	-11.5	11.4
Segue Institute	All Schools Combined	143	39.2	4.1	118	51.7	4.6	130	42.3	4.3	-9.4	3.1
	High	119	16.8	3.4	117	49.6	4.6	114	34.2	4.4	-15.4	17.4
Segue Institute	Middle	n/a	n/a	n/a	77	6.5	2.8	70	11.4	3.8	4.9	n/a

2014 Rhode Island NECAP Science Results

District	School Level	N 2008	% Prof. 2008	SE 2008	N 2013	% Prof. 2013	SE 2013	N 2014	% Prof. 2014	SE 2014	% Prof. Difference: 2013-2014	% Prof. Difference: 2008-2014
Sheila Skip Nowell High School	All Schools Combined	n/a	n/a	n/a	n/a	n/a	n/a	19			n/a	n/a
Smithfield	All Schools Combined	648	43.2	1.9	564	55.5	2.1	500	49.8	2.2	-5.7	6.6
	Elementary	197	58.9	3.5	178	61.8	3.6	169	72.2	3.4	10.4	13.3
	Middle	227	44.1	3.3	180	46.1	3.7	171	38.0	3.7	-8.1	-6.0
	High	224	28.6	3.0	206	58.3	3.4	160	38.8	3.9	-19.5	10.2
South Kingstown	All Schools Combined	884	43.6	1.7	766	56.9	1.8	782	52.2	1.8	-4.7	8.6
	Elementary	265	52.1	3.1	237	64.1	3.1	265	54.7	3.1	-9.4	2.6
	Middle	319	43.9	2.8	274	56.6	3.0	271	46.5	3.0	-10.1	2.6
	High	300	35.7	2.8	255	50.6	3.1	246	55.7	3.2	5.1	20.0
The Compass School	All Schools Combined	28	53.6	9.4	32	75.0	7.7	37	56.8	8.1	-18.2	3.2
	Elementary	17	70.6	11.1	19	73.7	10.1	19	84.2	8.4	10.5	13.6
	Middle	11	27.3	13.4	13	76.9	11.7	18	27.8	10.6	-49.1	0.5
The Greene School	High	n/a	n/a	n/a	42	40.5	7.6	38	44.7	8.1	4.3	n/a
The Learning Community	All Schools Combined	40	22.5	6.6	117	27.4	4.1	118	24.6	4.0	-2.8	2.1
	Elementary	40	22.5	6.6	62	38.7	6.2	63	42.9	6.2	4.1	20.4
	Middle	n/a	n/a	n/a	55	14.5	4.8	55	3.6	2.5	-10.9	n/a
Tiverton	All Schools Combined	460	31.7	2.2	405	45.7	2.5	426	37.6	2.3	-8.1	5.8
	Elementary	148	49.3	4.1	133	57.1	4.3	144	56.3	4.1	-0.9	6.9
	Middle	158	16.5	2.9	143	35.7	4.0	155	29.0	3.6	-6.6	12.6
	High	154	30.5	3.7	129	45.0	4.4	127	26.8	3.9	-18.2	-3.7
Trinity Academy	Middle	n/a	n/a	n/a	34	2.9	2.9	32	3.1	3.1	0.2	n/a
Urban Collaborative	Middle	56			82			73				
Warwick	All Schools Combined	2539	24.1	.8	2090	27.4	1.0	2114	26.5	1.0	-0.9	2.4
	Elementary	824	43.7	1.7	698	40.4	1.9	742	42.6	1.8	2.2	-1.1
	Middle	873	15.8	1.2	697	21.5	1.6	707	18.2	1.5	-3.3	2.4
	High	842	13.7	1.2	695	20.3	1.5	665	17.4	1.5	-2.8	3.8
West Warwick	All Schools Combined	773	17.7	1.4	679	27.1	1.7	669	20.8	1.6	-6.3	3.1
	Elementary	259	25.5	2.7	259	34.0	2.9	235	33.6	3.1	-0.4	8.1
	Middle	292	13.0	2.0	214	16.8	2.6	244	10.7	2.0	-6.2	-2.4
	High	222	14.9	2.4	206	29.1	3.2	190	17.9	2.8	-11.2	3.0
Westerly	All Schools Combined	779	31.1	1.7	650	52.3	2.0	683	37.0	1.8	-15.3	6.0
	Elementary	234	48.3	3.3	221	64.3	3.2	223	49.8	3.3	-14.5	1.5
	Middle	276	25.7	2.6	224	50.4	3.3	216	27.3	3.0	-23.1	1.6
	High	269	21.6	2.5	205	41.5	3.4	244	34.0	3.0	-7.4	12.5
Woonsocket	All Schools Combined	1310	10.2	.8	1152	13.5	1.0	1168	12.9	1.0	-0.6	2.7
	Elementary	515	20.4	1.8	438	19.2	1.9	458	17.2	1.8	-1.9	-3.1
	Middle	431	2.6	.8	369	6.0	1.2	360	5.8	1.2	-0.1	3.3
	High	364	4.9	1.1	345	14.5	1.9	350	14.6	1.9	0.1	9.6
STATE	All Schools Combined	33358	23.8	.2	30759	33.8	.3	30794	31.7	0.3	-2.1	7.9
	Elementary	11004	36.4	.5	10749	40.9	.5	10945	41.3	0.5	0.4	4.9
	Middle	11883	18.7	.4	9945	29.8	.5	10149	22.8	0.4	-7.0	4.1
	High	10471	16.4	.4	10065	30.1	.5	9700	30.1	0.5	0.0	13.7

Key

- = Statistically significant *decrease* in total percent of students *proficient* or above
- = Statistically significant *increase* in total percent of students *proficient* or above
- = No statistically significant difference between comparison years' total percent of students *proficient* or above

- SE = Standard error (see Appendix B)
- N = Number of students tested
- Blank = N<10 and/or % Proficient is <1%

SCHOOL RESULTS

Table 11. Percent of Students At/Above “Proficient” in Science by School.

District	School	N 2008	% Prof. 2008	SE 2008	N 2013	% Prof. 2013	SE 2013	N 2014	% Prof. 2014	SE 2014	% Prof. Difference: 2013-2014	% Prof. Difference: 2008-2014
Barrington	All Schools Combined	827	63.0	1.7	802	65.6	1.7	828	62.7	1.7	-2.9	-0.3
	Hampden Meadows ES	244	70.5	2.9	272	67.6	2.8	256	66.4	3.0	-1.2	-4.1
	Barrington MS	299	64.2	2.8	259	71.8	2.8	295	55.3	2.9	-16.6	-9.0
	Barrington HS	282	55.7	3.0	269	57.6	3.0	272	68.0	2.8	10.4	12.3
Beacon Charter School	Beacon Charter HS	21	4.8	4.6	52	26.9	6.2	52	17.3	5.2	-9.6	12.5
Blackstone Academy	Blackstone Academy Charter HS	37	2.7	2.7	39	25.6	7.0	39	15.4	5.8	-10.3	12.7
Blackstone Valley Prep	All Schools Combined	n/a	n/a	n/a	n/a	n/a	n/a	169	36.1	3.7	n/a	n/a
	Blackstone Valley Prep ES	n/a	n/a	n/a	n/a	n/a	n/a	81	54.3	5.5	n/a	n/a
	Blackstone Valley Prep MS	n/a	n/a	n/a	n/a	n/a	n/a	88	19.3	4.2	n/a	n/a
Bristol-Warren	All Schools Combined	783	28.0	1.6	753	42.1	1.8	695	34.5	1.8	-7.6	6.6
	Colt Andrews ES	n/a	n/a	n/a	72	50.0	5.9	56	37.5	6.5	-12.5	n/a
	Guiteras ES	46	39.1	7.2	47	53.2	7.3	44	50.0	7.5	-3.2	10.9
	Hugh Cole ES	84	36.9	5.3	103	41.7	4.9	91	25.3	4.6	-16.5	-11.6
	Rockwell ES	45	66.7	7.0	65	70.8	5.6	47	63.8	7.0	-6.9	-2.8
	Kickemuit MS	279	19.4	2.4	234	31.2	3.0	252	26.6	2.8	-4.6	7.2
Burrillville	All Schools Combined	564	25.9	1.8	536	36.4	2.1	550	30.9	2.0	-5.5	5.0
	Steere Farm ES	86	32.6	5.1	110	50.9	4.8	85	43.5	5.4	-7.4	11.0
	W. L. Callahan ES	80	47.5	5.6	90	31.1	4.9	95	33.7	4.8	2.6	-13.8
	Burrillville MS	212	30.2	3.2	169	45.0	3.8	196	25.0	3.1	-20.0	-5.2
	Burrillville HS	184	8.7	2.1	164	21.3	3.2	172	30.2	3.5	8.9	21.5
Central Falls	All Schools Combined	705	7.2	1.0	560	12.9	1.4	574	10.5	1.3	-2.4	3.2
	Ella Risk ES	84	17.9	4.2	106	27.4	4.3	121	14.0	3.2	-13.3	-3.8
	Veterans Memorial ES	99	12.1	3.3	115	14.8	3.3	126	11.9	2.9	-2.9	-0.2
	Dr. E. F. Calcutt MS	268	1.5	.7	142	7.7	2.2	131				
	Central Falls Sr. HS	164	4.3	1.6	193	7.8	1.9	192	14.1	2.5	6.3	9.8
Chariho	All Schools Combined	857	34.5	1.6	819	55.6	1.7	750	56.3	1.8	0.7	21.7
	Ashaway ES	49	51.0	7.1	54	72.2	6.1	44	86.4	5.2	14.1	35.3
	Charlestown ES	71	47.9	5.9	58	70.7	6.0	67	74.6	5.3	3.9	26.7
	Hope Valley ES	49	59.2	7.0	41	68.3	7.3	46	80.4	5.8	12.1	21.3
	Richmond ES	95	58.9	5.0	83	73.5	4.8	78	67.9	5.3	-5.5	9.0
	Chariho Regional MS	291	30.6	2.7	294	57.5	2.9	221	62.0	3.3	4.5	31.4
	The R.Y.S.E. School (gr. 8)	6			8			4				
	Chariho Regional HS	284	21.8	2.5	275	41.5	3.0	287	36.9	2.8	-4.5	15.1

2014 Rhode Island NECAP Science Results

District	School	N 2008	% Prof. 2008	SE 2008	N 2013	% Prof. 2013	SE 2013	N 2014	% Prof. 2014	SE 2014	% Prof. Difference: 2013-2014	% Prof. Difference: 2008-2014
	The R.Y.S.E. School (gr. 11)	9			5			3				
Coventry	All Schools Combined	1308	30.6	1.3	1117	46.8	1.5	1139	43.9	1.5	-2.9	13.3
	Blackrock ES	66	34.8	5.9	73	42.5	5.8	73	35.6	5.6	-6.8	0.8
	Hopkins Hill ES	64	39.1	6.1	60	51.7	6.5	61	60.7	6.3	9.0	21.6
	Tiogue ES	68	61.8	5.9	68	54.4	6.0	69	68.1	5.6	13.7	6.4
	Washington Oak ES	88	44.3	5.3	91	47.3	5.2	117	52.1	4.6	4.9	7.8
	Western Coventry ES	78	53.8	5.6	76	68.4	5.3	55	63.6	6.5	-4.8	9.8
	A. S. Feinstein MS	469	31.1	2.1	360	47.8	2.6	392	35.5	2.4	-12.3	4.3
	Coventry HS	426	14.8	1.7	388	40.5	2.5	370	41.9	2.6	1.4	27.1
Cranston	All Schools Combined	2524	26.4	.9	2388	36.1	1.0	2363	31.3	1.0	-4.8	4.9
	Arlington ES	23	43.5	10.3	25	28.0	9.0	25	36.0	9.6	8.0	-7.5
	Chester W. Barrows ES	33	78.8	7.1	39	41.0	7.9	27	51.9	9.6	10.8	-26.9
	Daniel D. Waterman ES	34	41.2	8.4	36	36.1	8.0	43	30.2	7.0	-5.9	-10.9
	Eden Park ES	46	43.5	7.3	49	51.0	7.1	54	59.3	6.7	8.2	15.8
	Edgewood Highland ES	40	35.0	7.5	32	46.9	8.8	46	39.1	7.2	-7.7	4.1
	Edward S. Rhodes ES	44	52.3	7.5	50	60.0	6.9	41	75.6	6.7	15.6	23.3
	Garden City ES	48	50.0	7.2	31	25.8	7.9	50	30.0	6.5	4.2	-20.0
	George J. Peters ES	63	58.7	6.2	54	46.3	6.8	54	50.0	6.8	3.7	-8.7
	Gladstone Street ES	74	31.1	5.4	98	21.4	4.1	92	34.8	5.0	13.4	3.7
	Glen Hills ES	52	36.5	6.7	42	47.6	7.7	45	42.2	7.4	-5.4	5.7
	Hope Highlands ES	53	58.5	6.8	76	48.7	5.7	72	50.0	5.9	1.3	-8.5
	Oak Lawn ES	40	62.5	7.7	38	71.1	7.4	48	47.9	7.2	-23.1	-14.6
	Orchard Farms ES	54	79.6	5.5	50	70.0	6.5	51	72.5	6.2	2.5	-7.1
	Stadium ES	37	56.8	8.1	43	30.2	7.0	49	20.4	5.8	-9.8	-36.3
	Stone Hill ES	40	60.0	7.7	44	40.9	7.4	35	51.4	8.4	10.5	-8.6
	William R. Dutemple ES	43	27.9	6.8	51	37.3	6.8	51	25.5	6.1	-11.8	-2.4
	Woodridge ES	55	49.1	6.7	42	81.0	6.1	57	73.7	5.8	-7.3	24.6
	Hugh B. Bain MS	244	5.7	1.5	202	22.3	2.9	207	9.2	2.0	-13.1	3.4
	Park View MS	294	16.7	2.2	228	32.9	3.1	242	24.4	2.8	-8.5	7.7
	Western Hills MS	363	25.9	2.3	310	38.7	2.8	312	23.4	2.4	-15.3	-2.5
	Cranston HS East	353	5.9	1.3	384	21.4	2.1	366	19.9	2.1	-1.4	14.0
	Cranston HS West	439	21.6	2.0	418	41.9	2.4	360	35.0	2.5	-6.9	13.4
	NEL/CPS Career Acad. HS	48			36	8.3	4.6	24	4.2	4.1	-4.2	
Cumberland	All Schools Combined	1144	26.6	1.3	1041	38.9	1.5	1007	41.5	1.6	2.6	14.9
	Ashton ES	69	34.8	5.7	51	41.2	6.9	50	46.0	7.0	4.8	11.2
	B.F. Norton ES	50	12.0	4.6	84	13.1	3.7	75	30.7	5.3	17.6	18.7
	Community ES	96	58.3	5.0	98	62.2	4.9	127	60.6	4.3	-1.6	2.3
	Garvin Memorial ES	60	38.3	6.3	70	32.9	5.6	53	39.6	6.7	6.8	1.3
	J. J. McLaughlin Cumberland Hill ES	96	41.7	5.0	68	41.2	6.0	62	54.8	6.3	13.7	13.2
	Joseph L. McCourt MS	221	14.0	2.3	158	33.5	3.8	139	19.4	3.4	-14.1	5.4
	North Cumberland MS	215	28.4	3.1	202	50.5	3.5	163	44.2	3.9	-6.3	15.8
	Cumberland HS	336	18.8	2.1	308	34.4	2.7	334	42.2	2.7	7.8	23.5

2014 Rhode Island NECAP Science Results

District	School	N 2008	% Prof. 2008	SE 2008	N 2013	% Prof. 2013	SE 2013	N 2014	% Prof. 2014	SE 2014	% Prof. Difference: 2013-2014	% Prof. Difference: 2008-2014
Davies Career-Tech.	William M. Davies Jr. Career-Technical HS	156	3.2	1.4	176	30.1	3.5	211	27.5	3.1	-2.6	24.3
DCYF	DCYF Alternate Education Program HS	6			13			8				
East Greenwich	All Schools Combined	593	46.9	2.0	533	67.4	2.0	595	61.0	2.0	-6.3	14.1
	George Hanaford ES	94	62.8	5.0	89	55.1	5.3	97	71.1	4.6	16.1	8.4
	James H. Eldredge ES	106	53.8	4.8	103	64.1	4.7	104	66.3	4.6	2.3	12.6
	Archie R. Cole MS	214	43.9	3.4	157	76.4	3.4	199	57.8	3.5	-18.6	13.9
	East Greenwich HS	176	38.1	3.7	182	68.1	3.5	193	57.0	3.6	-11.1	18.9
East Providence	All Schools Combined	1369	18.3	1.0	1088	30.5	1.4	1130	32.4	1.4	1.9	14.1
	Agnes B. Hennessey ES	46	34.8	7.0	51	27.5	6.2	44	38.6	7.3	11.2	3.9
	Alice M. Waddington ES	91	54.9	5.2	70	41.4	5.9	77	55.8	5.7	14.4	0.9
	Emma G. Whiteknact ES	52	30.8	6.4	49	26.5	6.3	42	21.4	6.3	-5.1	-9.3
	James R. D. Oldham ES	47	4.3	2.9	25	40.0	9.8	34	8.8	4.9	-31.2	4.6
	Kent Heights ES	52	36.5	6.7	46	32.6	6.9	39	25.6	7.0	-7.0	-10.9
	Myron J. Francis ES	77	61.0	5.6	72	43.1	5.8	74	48.6	5.8	5.6	-12.4
	Orlo Avenue ES	49	10.2	4.3	51	33.3	6.6	47	34.0	6.9	0.7	23.8
	Silver Spring ES	38	21.1	6.6	37	27.0	7.3	41	41.5	7.7	14.4	20.4
	Edward R. Martin MS	284	9.5	1.7	173	19.1	3.0	186	16.7	2.7	-2.4	7.2
	Riverside MS	178	13.5	2.6	176	13.6	2.6	194	17.0	2.7	3.4	3.5
	East Providence HS	434	8.3	1.3	325	41.8	2.7	336	44.9	2.7	3.1	36.6
Exeter-West Greenwich	All Schools Combined	461	30.2	2.1	424	53.5	2.4	387	45.5	2.5	-8.1	15.3
	Metcalf ES	135	37.0	4.2	144	56.3	4.1	120	60.8	4.5	4.6	23.8
	Exeter-West Greenwich MS	161	29.2	3.6	146	51.4	4.1	137	35.8	4.1	-15.6	6.6
	Exeter-West Greenwich HS	164	25.6	3.4	133	53.4	4.3	130	41.5	4.3	-11.8	15.9
Foster	Captain Isaac Paine ES	57	56.1	6.6	36	58.3	8.2	54	44.4	6.8	-13.9	-11.7
Foster-Glocester	All Schools Combined	443	16.5	1.8	321	32.1	2.6	304	29.3	2.6	-2.8	12.8
	Ponaganset MS	224	18.8	2.6	148	28.4	3.7	149	33.6	3.9	5.2	14.8
	Ponaganset HS	219	14.2	2.4	172	35.5	3.6	155	25.2	3.5	-10.3	11.0
Glocester	All Schools Combined	130	50.0	4.4	97	39.2	5.0	83	54.2	5.5	15.0	4.2
	Fogarty Memorial ES	66	56.1	6.1	59	45.8	6.5	45	53.3	7.4	7.6	-2.7
	West Glocester ES	64	43.8	6.2	38	28.9	7.4	38	55.3	8.1	26.3	11.5
Highlander	All Schools Combined	49	12.2	4.7	66	21.2	5.0	73	11.0	3.7	-10.3	-1.3
	Highlander Charter (gr. 4)	17	23.5	10.3	36	19.4	6.6	37	13.5	5.6	-5.9	-10.0
	Highlander Charter (gr. 8)	32	6.3	4.3	30	23.3	7.7	36	8.3	4.6	-15.0	2.1
International Charter School	International Charter ES	49	10.2	4.3	52	36.5	6.7	54	51.9	6.8	15.3	41.6
Jamestown	All Schools Combined	102	35.3	4.7	104	63.5	4.7	107	56.1	4.8	-7.4	20.8
	Jamestown-Melrose ES	45	42.2	7.4	56	66.1	6.3	51	72.5	6.2	6.5	30.3
	Jamestown-Lawn MS	57	29.8	6.1	48	60.4	7.1	56	41.1	6.6	-19.3	11.2
Johnston	All Schools Combined	733	30.2	1.7	669	33.2	1.8	618	31.9	1.9	-1.3	1.7
	Brown Avenue ES	49	73.5	6.3	50	72.0	6.3	40	67.5	7.4	-4.5	-6.0
	Sarah Dyer Barnes ES	51	60.8	6.8	40	70.0	7.2	41	68.3	7.3	-1.7	7.5
	Thornton ES	79	26.6	5.0	74	37.8	5.6	75	33.3	5.4	-4.5	6.8
	Winsor Hill ES	100	38.0	4.9	68	47.1	6.1	63	58.7	6.2	11.7	20.7
	Nicholas A. Ferri MS	267	24.7	2.6	213	22.1	2.8	216	19.0	2.7	-3.1	-5.7
	Johnston Senior HS	180	16.1	2.7	217	23.5	2.9	178	21.3	3.1	-2.2	5.2

2014 Rhode Island NECAP Science Results

District	School	N 2008	% Prof. 2008	SE 2008	N 2013	% Prof. 2013	SE 2013	N 2014	% Prof. 2014	SE 2014	% Prof. Difference: 2013-2014	% Prof. Difference: 2008-2014
Kingston Hill Academy	Kingston Hill Academy ES	42	47.6	7.7	41	63.4	7.5	38	78.9	6.6	15.5	31.3
Lincoln	All Schools Combined	815	33.5	1.7	735	44.9	1.8	706	45.0	1.9	0.1	11.5
	Lincoln Central ES	70	74.3	5.2	62	71.0	5.8	73	74.0	5.1	3.0	-0.3
	Lonsdale ES	47	53.2	7.3	51	51.0	7.0	70	41.4	5.9	-9.6	-11.8
	Northern Lincoln ES	67	35.8	5.9	66	54.5	6.1	63	60.3	6.2	5.8	24.5
	Saylesville ES	74	43.2	5.8	62	51.6	6.3	43	74.4	6.7	22.8	31.2
	Lincoln MS	292	24.7	2.5	242	34.3	3.1	203	28.6	3.2	-5.7	3.9
	Lincoln Senior HS	263	25.9	2.7	247	44.1	3.2	250	42.8	3.1	-1.3	16.9
Little Compton	All Schools Combined	72	34.7	5.6	78	51.3	5.7	68	55.9	6.0	4.6	21.2
	Wilbur & McMahon (gr. 4)	34	50.0	8.6	36	63.9	8.0	32	78.1	7.3	14.2	28.1
	Wilbur & McMahon (gr. 8)	38	21.1	6.6	42	40.5	7.6	36	36.1	8.0	-4.4	15.1
MET Career & Technical Center	Metropolitan Regional Career & Tech. Center HS	154	2.6	1.3	228	2.2	1.0	209	2.9	1.2	0.7	0.3
Middletown	All Schools Combined	493	30.6	2.1	502	44.0	2.2	484	40.5	2.2	-3.5	9.9
	J. H. Gaudet Learning Academy ES	n/a	n/a	n/a	161	52.8	3.9	178	50.6	3.7	-2.2	n/a
	J. H. Gaudet MS	176	34.7	3.6	169	34.9	3.7	149	26.8	3.6	-8.1	-7.8
	Middletown HS	139	15.8	3.1	167	46.1	3.9	149	44.3	4.1	-1.8	28.5
Narragansett	All Schools Combined	327	33.6	2.6	314	55.4	2.8	341	52.8	2.7	-2.6	19.1
	Narragansett ES	77	50.6	5.7	97	60.8	5.0	107	72.0	4.3	11.1	21.3
	Narragansett Pier MS	134	29.9	4.0	100	57.0	5.0	112	26.8	4.2	-30.2	-3.1
	Narragansett HS	115	27.0	4.1	116	50.0	4.6	120	60.8	4.5	10.8	33.9
New Shoreham	All Schools Combined	29	48.3	9.3	25	56.0	9.9	30	56.7	9.0	0.7	8.4
	Block Island (gr. 4)	10	70.0	14.5	12	50.0	14.4	10	80.0	12.6	30.0	10.0
	Block Island (gr. 8 and 11)	12	25.0	12.5	13	61.5	13.5	20	45.0	11.1	-16.5	20.0
Newport	All Schools Combined	472	21.6	1.9	366	32.2	2.4	419	22.4	2.0	-9.8	0.8
	Claiborne Pell ES	n/a	n/a	n/a	n/a	n/a	n/a	147	31.3	3.8	n/a	n/a
	Coggeshall ES	44	40.9	7.4	21	19	8.6	n/a	n/a	n/a	n/a	n/a
	Cranston - Calvert ES	43	39.5	7.5	41	39	7.6	n/a	n/a	n/a	n/a	n/a
	Dr. M. H. Sullivan ES	45	11.1	4.7	38	23.7	6.9	n/a	n/a	n/a	n/a	n/a
	W. J. Underwood ES	22	36.4	10.3	43	65.1	7.3	n/a	n/a	n/a	n/a	n/a
	Frank E. Thompson MS	168	12.5	2.6	120	25.0	4.0	153	15.7	2.9	-9.3	3.2
	Rogers HS	121	15.7	3.3	95	32.6	4.8	109	22.0	4.0	-10.6	6.3
North Kingstown	All Schools Combined	1060	36.7	1.5	923	53.1	1.6	935	55.9	1.6	2.8	19.2
	Fishing Cove ES	n/a	n/a	n/a	44	47.7	7.5	38	68.4	7.5	20.7	n/a
	Forest Park ES	n/a	n/a	n/a	36	38.9	8.1	50	66.0	6.7	27.1	n/a
	Hamilton ES	185	66.5	3.5	71	67.6	5.6	84	69.0	5.0	1.4	2.6
	Stony Lane ES	n/a	n/a	n/a	76	78.9	4.7	72	76.4	5.0	-2.6	n/a
	S. M. Henseler Quidnessett ES	135	44.4	4.3	43	69.8	7.0	58	77.6	5.5	7.8	33.1
	Davisville MS	185	28.6	3.3	170	50.6	3.8	182	39.0	3.6	-11.6	10.4
	Wickford MS	163	31.9	3.7	135	64.4	4.1	125	47.2	4.5	-17.2	15.3
	North Kingstown Senior HS	383	26.4	2.3	346	41.6	2.6	323	54.5	2.8	12.9	28.1
North Providence	All Schools Combined	779	16.4	1.3	760	25.9	1.6	770	29.6	1.6	3.7	13.2
	Centredale ES	36	25.0	7.2	44	36.4	7.3	45	35.6	7.1	-0.8	10.6

2014 Rhode Island NECAP Science Results

District	School	N 2008	% Prof. 2008	SE 2008	N 2013	% Prof. 2013	SE 2013	N 2014	% Prof. 2014	SE 2014	% Prof. Difference: 2013-2014	% Prof. Difference: 2008-2014
N. Providence (continued)	Dr. Joseph A. Whelan ES	31	38.7	8.7	41	36.6	7.5	50	64.0	6.8	27.4	25.3
	Greystone ES	43	25.6	6.7	56	25.0	5.8	41	43.9	7.8	18.9	18.3
	James L. McGuire ES	33	42.4	8.6	43	48.8	7.6	56	41.1	6.6	-7.8	-1.4
	Marieville ES	41	22.0	6.5	47	34.0	6.9	43	37.2	7.4	3.2	15.3
	Stephen Olney ES	37	40.5	8.1	54	51.9	6.8	53	67.9	6.4	16.1	27.4
	Birchwood MS	139	14.4	3.0	116	9.5	2.7	123	10.6	2.8	1.1	-3.8
	Dr. Edward A. Ricci MS	137	8.0	2.3	112	9.8	2.8	121	3.3	1.6	-6.5	-4.7
	North Providence HS	279	9.7	1.8	241	27.0	2.9	233	30.0	3.0	3.1	20.4
North Smithfield	All Schools Combined	431	30.9	2.2	392	46.9	2.5	408	53.2	2.5	6.2	22.3
	Dr. H. L. Halliwell Memorial ES	96	52.1	5.1	147	53.1	4.1	143	66.4	3.9	13.4	14.4
	North Smithfield MS	148	13.5	2.8	131	53.4	4.4	116	39.7	4.5	-13.8	26.1
	North Smithfield HS	142	27.5	3.7	109	33.0	4.5	146	52.1	4.1	19.0	24.6
Paul Cuffee Charter School	All Schools Combined	86	20.9	4.4	172	20.3	3.1	174	13.2	2.6	-7.1	-7.7
	Paul Cuffee Charter (gr. 4)	47	31.9	6.8	54	38.9	6.6	57	22.8	5.6	-16.1	-9.1
	Paul Cuffee Charter (gr. 8)	39	7.7	4.3	58	17.2	5.0	60	11.7	4.1	-5.6	4.0
	Paul Cuffee Charter (gr. 11)	n/a	n/a	n/a	60	6.7	3.2	57	5.3	3.0	-1.4	n/a
Pawtucket	All Schools Combined	1860	11.2	.7	1891	15.0	.8	1869	14.0	0.8	-1.1	2.8
	Agnes E. Little ES	62	9.7	3.8	76	15.8	4.2	62	22.6	5.3	6.8	12.9
	Curvin-McCabe ES	60	30.0	5.9	75	24.0	4.9	66	36.4	5.9	12.4	6.4
	Elizabeth Baldwin ES	94	16.0	3.8	113	34.5	4.5	105	11.4	3.1	-23.1	-4.5
	Fallon Memorial ES	80	8.8	3.2	82	19.5	4.4	105	6.7	2.4	-12.8	-2.1
	Flora S. Curtis Memorial ES	31	19.4	7.1	46	30.4	6.8	53	26.4	6.1	-4.0	7.1
	Francis J. Varieur ES	49	40.8	7.0	51	43.1	6.9	54	31.5	6.3	-11.7	-9.3
	Henry J. Winters ES	59	13.6	4.5	52	5.8	3.2	53	13.2	4.7	7.4	-0.4
	M. Virginia Cunningham ES	63	11.1	4.0	95	10.5	3.1	92	17.4	4.0	6.9	6.3
	Nathanael Greene ES	75	14.7	4.1	91	33.0	4.9	91	13.2	3.5	-19.8	-1.5
	Potter-Burns ES	83	18.1	4.2	79	38.0	5.5	92	44.6	5.2	6.6	26.5
	Goff MS	228	11.4	2.1	229	3.1	1.1	210	5.7	1.6	2.7	-5.7
	Joseph Jenks MS	236	2.1	.9	172	5.8	1.8	187	7.0	1.9	1.1	4.8
	Samuel Slater MS	283	7.8	1.6	248	5.2	1.4	228	2.2	1.0	-3.0	-5.6
Jacqueline M. Walsh HS for the Perf. & Vis. Arts	194	4.6	1.5	209	11.0	2.2	211	10.9	2.1	-0.1	6.3	
Charles E. Shea Senior HS	n/a	n/a	n/a	36	8.3	4.6	50	24.0	6.0	15.7	n/a	
William E. Tolman Senior HS	255	12.9	2.1	219	15.5	2.4	195	16.4	2.7	0.9	3.5	
Portsmouth	All Schools Combined	675	38.5	1.9	667	51.1	1.9	595	53.4	2.0	2.3	14.9
	Portsmouth MS (gr. 4)	n/a	n/a	n/a	180	55.0	3.7	179	50.8	3.7	-4.2	n/a
	Portsmouth MS (gr. 8)	254	30.3	2.9	203	49.8	3.5	193	51.8	3.6	2.1	21.5
	Portsmouth HS	224	36.6	3.2	278	50.7	3.0	217	57.6	3.4	6.9	21.0
Providence	All Schools Combined	5134	5.3	.3	4647	12.4	.5	4718	12.1	0.5	-0.4	6.7
	Alan Shawn Feinstein ES	51	13.7	4.8	74	8.1	3.2	72	11.1	3.7	3.0	-2.6
	Alfred Lima, Sr. ES	74	1.4	1.3	142	14.1	2.9	168	10.1	2.3	-4.0	8.8
	Anthony Carnevale ES	76	10.5	3.5	100	35.0	4.8	117	18.8	3.6	-16.2	8.3
	Asa Messer ES	75	4.0	2.3	106	3.8	1.9	104	11.5	3.1	7.8	7.5

2014 Rhode Island NECAP Science Results

District	School	N 2008	% Prof. 2008	SE 2008	N 2013	% Prof. 2013	SE 2013	N 2014	% Prof. 2014	SE 2014	% Prof. Difference: 2013-2014	% Prof. Difference: 2008-2014
Providence (continued)	Carl G. Lauro ES	125	6.4	2.2	164	17.7	3.0	147	18.4	3.2	0.7	12.0
	Dr. Martin Luther King, Jr. ES	61	26.2	5.6	86	18.6	4.2	90	13.3	3.6	-5.3	-12.9
	Frank D. Spaziano ES	87	18.4	4.2	103	5.8	2.3	95	14.7	3.6	8.9	-3.7
	George J. West ES	118	5.9	2.2	104	25.0	4.2	124	26.6	4.0	1.6	20.7
	Harry Kizirian ES	70	10.0	3.6	94	20.2	4.1	88	10.2	3.2	-10.0	0.2
	Leviton Dual Language ES	n/a	n/a	n/a	28	39.3	9.2	40	7.5	4.2	-31.8	n/a
	Lillian Feinstein ES, Sackett St.	68	10.3	3.7	79	12.7	3.7	79	16.5	4.2	3.8	6.2
	Mary E. Fogarty ES	68	2.9	2.0	65	1.5	1.5	71	4.2	2.4	2.7	1.3
	Pleasant View ES	47	8.5	4.1	50	12.0	4.6	42	33.3	7.3	21.3	24.8
	Reservoir Avenue ES	33	9.1	5.0	72	29.2	5.4	48	20.8	5.9	-8.3	11.7
	Robert F. Kennedy ES	80	28.8	5.1	100	28.0	4.5	95	42.1	5.1	14.1	13.4
	Robert L. Bailey IV, ES	78	1.3	1.3	83	7.2	2.8	78	5.1	2.5	-2.1	3.8
	The Sgt. Cornel Young and C. Woods ES	47	6.4	3.6	101	5.0	2.2	99	5.1	2.2	0.1	-1.3
	Times2 Academy (gr. 4)	46	6.5	3.6	54	25.9	6.0	54	27.8	6.1	1.9	21.3
	Vartan Gregorian ES	40	40.0	7.7	48	52.1	7.2	52	69.2	6.4	17.1	29.2
	Veazie Street ES	88	10.2	3.2	97	14.4	3.6	116	10.3	2.8	-4.1	0.1
	Webster Avenue ES	52	9.6	4.1	55	27.3	6.0	59	23.7	5.5	-3.5	14.1
	William D'Abate ES	73	13.7	4.0	78	16.7	4.2	76	14.5	4.0	-2.2	0.8
	Esek Hopkins MS	186	1.1	.8	142	3.5	1.5	171	1.8	1.0	-1.8	0.7
	Gilbert Stuart MS	254			209			228				
	Governor Christopher DelSesto MS	216			225	4.4	1.4	316	1.6	0.7	-2.9	
	Nathan Bishop MS	n/a	n/a	n/a	216	23.6	2.9	220	15.0	2.4	-8.6	n/a
	Nathanael Greene MS	327	4.6	1.2	315	15.9	2.1	311	16.7	2.1	0.8	12.1
	Roger Williams MS	291			230	2.2	1.0	225	1.3	0.8	-0.8	
	Times2 Academy (gr. 8)	74	12.2	3.8	52	9.6	4.1	59	10.2	3.9	0.6	-2.0
	Academy for Career Exploration (ACES) HS	58			45	2.2	2.2	41	9.8	4.6	7.5	
	Central HS	246	1.6	.8	174	1.1	.8	196				
	Classical HS	262	19.5	2.4	294	35.7	2.8	269	39.4	3.0	3.7	19.9
	Dr. Jorge Alvarez HS	72	2.8	1.9	131	.0	.0	83	4.8	2.4	4.8	2.0
	E-Cubed Acad. HS	65	1.5	1.5	51	2.0	1.9	77	1.3	1.3	-0.7	-0.2
Hope HS	n/a	n/a	n/a	187	1.6	.9	124	3.2	1.6	1.6	n/a	
Mount Pleasant HS	212			184	2.7	1.2	162					
Providence Career & Tech. Academy HS	n/a	n/a	n/a	85			125	3.2	1.6		n/a	
Times2 Academy (gr. 11)	32	21.9	7.3	31	3.2	3.2	40	17.5	6.0	14.3	-4.4	
W. B. Cooley Senior HS	83			162	1.9	1.1	121	2.5	1.4	0.6		
Rhode Island Nurses Institute	RI Nurses Institute Middle College Charter HS	n/a	n/a	n/a	70	1.4	1.4	47	8.5	4.1	7.1	n/a
Rhode Island School for the Deaf	All Schools Combined	7			12			17				
	RI School for the Deaf (gr. 4)	4			4			6				
	RI School for the Deaf (gr. 8)	1			5			3				
	RI School for the Deaf (gr. 11)	2			3			8				
Scituate	All Schools Combined	417	37.9	2.4	347	58.8	2.6	359	46.8	2.6	-12.0	8.9
	Clayville ES	47	61.7	7.1	22	86.4	7.3	21	66.7	10.3	-19.7	5.0

2014 Rhode Island NECAP Science Results

District	School	N 2008	% Prof. 2008	SE 2008	N 2013	% Prof. 2013	SE 2013	N 2014	% Prof. 2014	SE 2014	% Prof. Difference: 2013-2014	% Prof. Difference: 2008-2014
Scituate (continued)	Hope ES	59	50.8	6.5	45	75.6	6.4	47	78.7	6.0	3.2	27.9
	North Scituate ES	49	46.9	7.1	45	71.1	6.8	47	48.9	7.3	-22.2	2.0
	Scituate MS	143	39.2	4.1	118	51.7	4.6	130	42.3	4.3	-9.4	3.1
	Scituate HS	119	16.8	3.4	117	49.6	4.6	114	34.2	4.4	-15.4	17.4
Segue Institute	Segue Institute for Learning MS	n/a	n/a	n/a	77	6.5	2.8	70	11.4	3.8	4.9	n/a
Sheila Skip Nowell Leadership Academy	All Schools Combined	n/a	n/a	n/a	n/a	n/a	n/a	19			n/a	n/a
	S. S. Nowell Leadership Academy I	n/a	n/a	n/a	n/a	n/a	n/a	11			n/a	n/a
	S. S. Nowell Leadership Academy II	n/a	n/a	n/a	n/a	n/a	n/a	8			n/a	n/a
Smithfield	All Schools Combined	648	43.2	1.9	564	55.5	2.1	500	49.8	2.2	-5.7	6.6
	Anna M. McCabe ES	61	45.9	6.4	49	44.9	7.1	43	72.1	6.8	27.2	26.2
	Old County Road ES	41	61.0	7.6	45	71.1	6.8	45	71.1	6.8	0.0	10.1
	Raymond C. LaPerche ES	49	71.4	6.5	40	70.0	7.2	33	72.7	7.8	2.7	1.3
	William Winsor ES	45	62.2	7.2	44	63.6	7.3	48	72.9	6.4	9.3	10.7
	Vincent J. Gallagher MS	227	44.1	3.3	180	46.1	3.7	171	38.0	3.7	-8.1	-6.0
	Smithfield Senior HS	223	28.7	3.0	205	58.5	3.4	160	38.8	3.9	-19.8	10.1
	South Kingstown	All Schools Combined	884	43.6	1.7	766	56.9	1.8	782	52.2	1.8	-4.7
	Matunuck ES	59	57.6	6.4	46	67.4	6.9	59	71.2	5.9	3.8	13.6
	Peace Dale ES	102	51.0	4.9	90	61.1	5.1	79	46.8	5.6	-14.3	-4.1
	Wakefield ES	46	45.7	7.3	52	75.0	6.0	55	74.5	5.9	-0.5	28.9
	West Kingston ES	55	56.4	6.7	49	55.1	7.1	72	34.7	5.6	-20.4	-21.6
	Curtis Corner MS	170	44.7	3.8	272	57.0	3.0	268	47.0	3.0	-10.0	2.3
	South Kingstown HS	297	36.0	2.8	254	50.8	3.1	246	55.7	3.2	4.9	19.7
	The Compass School	All Schools Combined	28	53.6	9.4	32	75.0	7.7	37	56.8	8.1	-18.2
	The Compass School (gr. 4)	17	70.6	11.1	19	73.7	10.1	19	84.2	8.4	10.5	13.6
	The Compass School (gr. 8)	11	27.3	13.4	13	76.9	11.7	18	27.8	10.6	-49.1	0.5
	The Greene School	The Greene School HS	n/a	n/a	n/a	42	40.5	7.6	38	44.7	8.1	4.3
The Learning Community	All Schools Combined	40	22.5	6.6	117	27.4	4.1	118	24.6	4.0	-2.8	2.1
	The Learning Community (gr. 4)	40	22.5	6.6	62	38.7	6.2	63	42.9	6.2	4.1	20.4
	The LearningCommunity (gr. 8)	n/a	n/a	n/a	55	14.5	4.8	55	3.6	2.5	-10.9	n/a
Tiverton	All Schools Combined	460	31.7	2.2	405	45.7	2.5	426	37.6	2.3	-8.1	5.8
	Fort Barton ES	21	57.1	10.8	38	81.6	6.3	44	77.3	6.3	-4.3	20.1
	Pocasset ES	61	37.7	6.2	45	35.6	7.1	43	41.9	7.5	6.3	4.2
	Walter E. Ranger ES	66	57.6	6.1	49	59.2	7.0	57	50.9	6.6	-8.3	-6.7
	Tiverton MS	158	16.5	2.9	142	35.9	4.0	154	29.2	3.7	-6.7	12.8
	Tiverton HS	154	30.5	3.7	126	46.0	4.4	121	28.1	4.1	-17.9	-2.4
Trinity Academy	Trinity Academy for the Performing Arts MS	n/a	n/a	n/a	34	2.9	2.9	32	3.1	3.1	0.2	n/a
Urban Collaborative	Urban Collaborative Accelerated Program MS	56			82			73				
Warwick	All Schools Combined	2539	24.1	.8	2090	27.4	1.0	2114	26.5	1.0	-0.9	2.4
	Cedar Hill ES	48	58.3	7.1	72	55.6	5.9	76	63.2	5.5	7.6	4.8
	Cottrell F. Hoxsie ES	54	64.8	6.5	55	36.4	6.5	44	34.1	7.1	-2.3	-30.7
	E. G. Robertson ES	31	48.4	9.0	41	46.3	7.8	48	33.3	6.8	-13.0	-15.1
	Francis ES	46	41.3	7.3	30	40.0	8.9	46	47.8	7.4	7.8	6.5
	Greenwood ES	42	61.9	7.5	50	44.0	7.0	41	36.6	7.5	-7.4	-25.3
	Harold F. Scott ES	35	62.9	8.2	42	59.5	7.6	44	50.0	7.5	-9.5	-12.9

2014 Rhode Island NECAP Science Results

District	School	N 2008	% Prof. 2008	SE 2008	N 2013	% Prof. 2013	SE 2013	N 2014	% Prof. 2014	SE 2014	% Prof. Difference: 2013-2014	% Prof. Difference: 2008-2014
Warwick (continued)	Holliman ES	38	44.7	8.1	42	47.6	7.7	40	55.0	7.9	7.4	10.3
	John Wickes ES	50	26.0	6.2	47	21.3	6.0	53	30.2	6.3	8.9	4.2
	Lippitt ES	37	32.4	7.7	25	40.0	9.8	31	25.8	7.9	-14.2	-6.6
	Norwood ES	29	62.1	9.0	33	48.5	8.7	34	55.9	8.5	7.4	-6.2
	Oakland Beach ES	57	26.3	5.8	54	20.4	5.5	45	22.2	6.2	1.9	-4.1
	Park ES	34	38.2	8.3	23	52.2	10.4	45	55.6	7.4	3.4	17.3
	Randall Holden ES	42	33.3	7.3	27	40.7	9.5	43	53.5	7.6	12.7	20.2
	Sherman ES	61	26.2	5.6	65	30.8	5.7	60	38.3	6.3	7.6	12.1
	Warwick Neck ES	41	56.1	7.8	46	50.0	7.4	39	46.2	8.0	-3.8	-9.9
	Wyman ES	46	52.2	7.4	46	23.9	6.3	48	29.2	6.6	5.3	-23.0
	Aldrich MS	295	11.9	1.9	248	21.4	2.6	239	20.1	2.6	-1.3	8.2
	Gorton MS	270	13.3	2.1	181	18.2	2.9	229	15.7	2.4	-2.5	2.4
	Winman MS	304	22.0	2.4	265	24.2	2.6	234	19.2	2.6	-4.9	-2.8
	Pilgrim HS	303	11.9	1.9	226	18.1	2.6	240	13.3	2.2	-4.8	1.5
	Toll Gate HS	281	14.6	2.1	229	25.3	2.9	220	18.2	2.6	-7.1	3.6
	Warwick Veterans Memorial HS	249	15.3	2.3	227	18.5	2.6	202	21.8	2.9	3.3	6.5
West Warwick	All Schools Combined	773	17.7	1.4	679	27.1	1.7	669	20.8	1.6	-6.3	3.1
	Greenbush ES	68	29.4	5.5	88	43.2	5.3	81	42.0	5.5	-1.2	12.6
	John F. Horgan ES	73	24.7	5.0	94	24.5	4.4	95	21.1	4.2	-3.4	-3.6
	Wakefield Hills ES	69	23.2	5.1	77	35.1	5.4	59	42.4	6.4	7.3	19.2
	John F. Deering MS	292	13.0	2.0	213	16.9	2.6	243	10.7	2.0	-6.2	-2.3
	West Warwick Sr. HS	221	14.9	2.4	204	29.4	3.2	186	18.3	2.8	-11.1	3.3
Westerly	All Schools Combined	779	31.1	1.7	650	52.3	2.0	683	37.0	1.8	-15.3	6.0
	Bradford ES	27	81.5	7.5	18	66.7	11.1	27	51.9	9.6	-14.8	-29.6
	Dunn's Corners ES	53	52.8	6.9	77	76.6	4.8	57	47.4	6.6	-29.3	-5.5
	Springbrook ES	37	51.4	8.2	54	61.1	6.6	66	50.0	6.2	-11.1	-1.4
	State Street ES	57	36.8	6.4	70	54.3	6.0	72	51.4	5.9	-2.9	14.5
	Westerly MS	276	25.7	2.6	221	51.1	3.4	216	27.3	3.0	-23.8	1.6
	Westerly HS	268	21.6	2.5	200	42.0	3.5	239	34.7	3.1	-7.3	13.1
Woonsocket	All Schools Combined	1310	10.2	.8	1152	13.5	1.0	1168	12.9	1.0	-0.6	2.7
	Bernon Heights ES	64	18.8	4.9	81	19.8	4.4	75	38.7	5.6	18.9	19.9
	Citizens Memorial ES	116	6.9	2.4	99	18.2	3.9	130	9.2	2.5	-9.0	2.3
	Globe Park ES	69	47.8	6.0	78	19.2	4.5	75	17.3	4.4	-1.9	-30.5
	Harris ES	79	12.7	3.7	67	20.9	5.0	71	5.6	2.7	-15.3	-7.0
	Kevin K. Coleman ES	119	19.3	3.6	47	17.0	5.5	44	15.9	5.5	-1.1	-3.4
	Leo A. Savoie ES	61	31.1	5.9	64	20.3	5.0	59	23.7	5.5	3.4	-7.4
	Woonsocket MS	423	2.6	.8	357	5.9	1.2	351	6.0	1.3	0.1	3.4
	Woonsocket HS	359	5.0	1.2	334	15.0	2.0	342	14.9	1.9	-0.1	9.9

Key

■ = Statistically significant *decrease* in total percent of students *proficient* or above

■ = Statistically significant *increase* in total percent of students *proficient* or above

□ = No statistically significant difference between comparison years

SE = Standard error (see Appendix B)

Blank = N<10 and/or % Proficient is <1%

APPENDICES

	<u>Page</u>
Appendix A: <i>Glossary of Terms</i>	26
Appendix B: <i>Standard Error (SE)</i>	27

APPENDIX A

Glossary of Terms

“Minimum Cell Size” Reporting Policy

RIDE Policy on minimum cell size for reporting data stipulates that if the number of students is less than 10 for any group(s) or for any school- and district-level reporting or if a percentage is less than 1% or greater than 99%, then data must be suppressed in public reports to ensure confidentiality of individual student results and to discourage generalizations about school performance based on very small populations. Throughout this report, empty cells indicate that the number of students included in calculations was less than 10 or the percentage was less than 1% or greater than 99%.

NECAP Performance Level Descriptors

- **Proficient with Distinction:** Students performing at this level demonstrate the prerequisite knowledge and skills needed to participate and excel in instructional activities aligned with the GSEs at the current grade level. Errors made by these students are few and minor and do not reflect gaps in prerequisite knowledge and skills.
- **Proficient:** Students performing at this level demonstrate minor gaps in the prerequisite knowledge and skills needed to participate and perform successfully in instructional activities aligned with the GSE at the current grade level. It is likely that any gaps in prerequisite knowledge and skills demonstrated by these students can be addressed during the course of typical classroom instruction.
- **Partially Proficient:** Students performing at this level demonstrate gaps in prerequisite knowledge and skills needed to participate and perform successfully in instructional activities aligned with the GSE at the current grade level. Additional instructional support may be necessary for these students to meet grade level expectations.
- **Substantially Below Proficient:** Students performing at this level demonstrate extensive and significant gaps in prerequisite knowledge and skills needed to participate and perform successfully in instructional activities aligned with the GSE at the current grade level. Additional instructional support is necessary for these students to meet grade level expectations.

APPENDIX B

Calculating Standard Error (SE)

For the purposes of this report, *Standard Error* (SE) is defined as a measurement of the standard error of a percentage (e.g., % *Proficient*, used throughout this report). Mathematically, SE's were calculated as follows:

$(SE) = \sqrt{\left(\frac{pq}{N}\right)}$, where p is the percent of students who are proficient, $q = (100-p)$ and N is the population or group size.

It is important to note that the derived SE is based on the size of the group being examined and its respective performance (read: % *Proficient*) on the NECAP tests. Standard errors can be used to create a confidence interval around the derived percentage so that you can see the range in which the “true” (e.g., measured without error) value is located. To do so, you can take the SE and multiply it by 1.96 (for a 95% confidence interval). The resultant product is then added and subtracted from the percent proficient, p , for example, to create a range of values in which you can be 95% confident that the “true” value is located. For example, viewing the percent proficient (p) as the center point, if one adds the value of $SE(1.96)$ to p and also subtracts this value from p , then the full confidence interval is created with both an upper and lower boundary. So, if p equals 70% and the SE equals .5, then the product of SE and 1.96 equals $.5(1.96)$ or .965. Adding and subtracting this number from 70% creates the confidence interval, which ranges from 69.04% to 70.97%. This is the range in which one can be 95% confident that the “true” value exists.

When comparing the performance of any two years or groups, we say that the difference in performance between the groups is *statistically significant* if the difference in performance between the two groups is larger than the sum of the SE's of the two groups. In other words, if the sum of the two SE's—each multiplied by 1.96 to get the 95% confidence interval—is larger than the value of the difference in performance between the two groups, then we say the difference is too small to be significant or meaningful because the difference doesn't fall outside of the range of plausible “true” values. To illustrate this point, let's say that 60% of 4th grade students at *School X* were proficient or above in science in 2013 and the following year in 2014, 66% of 4th grade students were proficient or above, thus resulting in an increase of +6 percentage points. If the sum of the 2013 $SE(1.96)$ and the 2014 $SE(1.96)$ is 6.5, then the change from 2013 to 2014 in 4th grade reading performance of +6 percentage points at *School X* is not large enough to be considered statistically significant. On the other hand, if 67% of 4th graders in 2014 were proficient or above, then the +7 percentage point increase in performance would be larger than the standard error of 6.5 and this difference would be statistically significant.