

Rhode Island State Assessment Program

Accommodations and Accessibility Features Manual (2021-22)

This manual contains accessibility and accommodations information for the ACCESS for ELLs, DLM, RICAS, NGSA, PSAT 10, and RI SAT School Day assessments.



RIDE Rhode Island
Department
of Education

TABLE OF CONTENTS

I. Introduction	1
Test Support Categories	1
Navigating the table of test supports	1
I. Accessibility Features	1
Table 1: Accessibility Features (<i>available to any student, regardless of disability or EL status</i>)	2
III. Participation Requirements for State Assessments	16
Participation Requirements for Students with Disabilities	16
Participation Requirements for Students Who Are English Learners (ELs)	16
Participation Requirements for English Learners (ELs) with Disabilities	17
If a Student Refuses an Accommodation	17
Unique Accommodations Requests	17
Participation Criteria for Alternate Assessments	17
IV. Accommodations for Students with Disabilities	18
The District's Role in Monitoring the Selection of Accommodations	18
Accommodations for Students with Disabilities	18
Purpose of Test Accommodations	18
Eligibility for Accommodations	19
If an Incorrect Accommodation Was Provided During Testing	19
Updating IEPs and 504 Plans	19
Amending IEPs or 504 Plans	19
Process for Selecting and Evaluating Accommodations for a Students with a Disability	19
Accommodations for Students with Disabilities	20
Accessibility Features and Accommodations for EL Students	22
Table 5: Accommodations for Students with Disabilities and English Learners	25
APPENDIX A: State Assessments by Grade	68
APPENDIX B: Documentation of Accommodations for an EL Student	69
APPENDIX C: Student Accommodation Refusal Form	70
APPENDIX D: Unique Accommodation Form	71
APPENDIX E: Emergency Accommodation Form	72
APPENDIX F: SAT and PSAT 10 Questionnaire for Extended Time, Reader, Scribe, and Breaks	73
APPENDIX G: Providing the Sign Language Accommodation	74
Sign-System-Specific Procedures	75
American Sign Language (ASL)	75
English-Based Sign Systems (PSE, Sim-Com, etc.)	75
APPENDIX H: RICAS Calculator Policy	76
APPENDIX I: PSAT 10 and SAT Calculator Policy	77
APPENDIX J: Scribe Guidelines	78
RICAS ELA Scribe Guidelines	79
NGSA Scribe Guidelines	80
APPENDIX K: RICAS and NGSA Read Aloud (Human Reader) Guidelines	82
APPENDIX L: NGSA Simplified Test Directions Guidelines	87
APPENDIX M: RICAS Calculator, Mathematics Tools, and Supplemental Reference Decision Tree	89
Index	90

I. Introduction

This manual contains information and state policies on accommodations and accessibility features for the five assessments that comprise the Rhode Island State Assessment Program (RISAP). Each assessment is slightly different in what are and are not appropriate test supports for students. IEP/504 teams and EL teams should read this manual carefully to ensure that they select the most effective test supports. Any support provided to a student should mitigate the student's challenges as much as possible and provide the greatest amount of access to the state assessments they take. Accommodations and accessibility features should support a student's independence so they can show what they know on our state tests.

In addition to this manual, several of the state assessments have additional accommodations and accessibility manuals that explain how to administer a test using the accommodation and any technical issues that to address prior to testing. **In addition to this manual, you will need:**

- **ACCESS:** *WIDA Accommodations and Accessibility Features Manual*
- **DLM:** *DLM Accessibility and Accommodations Manual*
- **RICAS:**
 - *Guide to the Student Registration/Personal Needs Profile (SR/PNP) Process*
 - *Guidelines for Using Assistive Technology as a RICAS Test Accommodation*
- **NGSA:**
 - *Accommodations and Accessibility Features Manual*
 - *NGSA TIDE User Guide*
 - *NGSA Assistive Technology Manual*
- **SAT and PSAT 10:**
 - *Accommodations and Supports Handbook*
 - *Accommodated Testing Manual*
 - *SSD Coordinator Guide*

All documents and other test-specific resources can be found at www.ride.ri.gov/accommodations

Test Support Categories

Test supports are divided into two categories depending on whether all students can use them, if they are for a student with a disability, or if they are designed for a student in the process of learning English.

1. **Accessibility Features:** can be used on either the computer- or paper-based test and may be used by any student. All of the flexible test administration procedures may be used with *any* student, at the discretion of the principal (or designee).
2. **Accommodations:** are available to students with disabilities and/or English learners. Teams and educators responsible for developing Individualized Education Programs (IEPs) and 504 plans must make decisions regarding accommodations, and these must be listed in the plan of each student. We encourage LEAs to list accommodations for EL students using the sample form in this document, though this is not required.
 - **Special Access Accommodations (RICAS only):** These accommodations can be only used by students who meet certain guidelines and criteria.
 - **State-Allowed Accommodations (PSAT 10 and SAT only):** Use of these accommodations will result in scores that are non-reportable. This means test scores cannot be used for

college admissions purposes. However, scores will be used by RIDE for accountability and assessment reporting and students will receive individual score reports.

Navigating the table of test supports

External or Non-Embedded Support: This column provides information what the support is, any criteria or requirements a student must meet before getting the support, and details on using the test support with paper-based tests.

- Information on using the external support with computer-based tests is here if the test support is not embedded into the test platform.
- This column provides the name of the test support used in the test-specific manuals. Often the names for the same test support are different across tests.
- We are required to monitor accommodations use across tests so any information on recording the accommodation is also provided.

Test Support Name: The name of the general category of test support. This provides a common name across all state assessments.

Student Status: Tells which students are eligible to use this test support. Options are:

- *Any Student* regardless of disability or EL status, students may use this test support.
- *IEP/504 Only* designate test supports only for students with disabilities. Students with RTI plans or Personal Literacy Plans do not qualify for these test supports.
- *EL Only* is for any current or former EL student

Test Support Name	Test	Student Status	Support Group	Embedded Support <i>Use information in this column for the computer-based edition of the test. Some test supports can be provided outside the test platform.</i>	External or Non-Embedded Support <i>Use information in this column for paper-based edition of the test or if the test support must be provided outside of the test platform.</i>
Adaptive or Specialized Furniture	ACCESS, DLM, NGSA, RICAS	Any Student	Accessibility Feature	<i>May be provided as a non-embedded support.</i>	ADAPTIVE OR SPECIALIZED EQUIPMENT OR FURNITURE. Some students may require specialized equipment or furniture including (but not limited to) special seating, weighted vests, fidget tools, noise-reducing headphones, specialized lighting or acoustics, or adaptive keyboards, desks, or lighting. <i>For ACCESS: See page 3 in the WIDA Accessibility and Accommodations Manual.</i> PNP Profile, TIDE, PNP: Not Recorded
	PSAT10_SAT	IEP/504 Only	Accommodation	ADAPTIVE OR SPECIALIZED FURNITURE. This is an accommodation for PSAT 10 and SAT. See page 25 for more information.	
Answer Eliminator	NGSA	Any Student	Accessibility Feature	ANSWER ELIMINATOR. This tool allows the student to mark an "X" through each answer option they think is incorrect. If an answer option is an image, it will be grayed out. Note: Defaulted to ON for all students. TIDE: Not Recorded	ANSWER ELIMINATOR. Student uses a pencil to mark an "X" through each answer option they think is incorrect in the paper edition or print out of test items. TIDE: Not Recorded

Test: The acronym for the state assessment.

Embedded Support: This column provides information what the support is, details on using it with computer-based tests, and any criteria or requirements a student must meet before getting the support.

- This column provides the name of the test support used in the test-specific manuals. Often the names for the same test support are different across tests.
- Configuration information. If a test support requires configuration before testing, that information is provided here.

Not all test supports are the same across tests. This manual divides test supports into *accessibility features* that all students can receive and *accommodations* that are only for specific students. Information on any tests where these designations are different is provided.

I. Accessibility Features

Accessibility features are tools and supports that are available to *all* students, regardless of their disability or EL status.

- **Accessibility features are not the same across tests.** Please read the description of the accessibility feature carefully and review any additional test manuals, if applicable.
- Most accessibility features are embedded in the computer-based test platform and have paper-based equivalents for students taking the paper-based tests. Which version of accessibility feature is provided depends on student preference and in some cases staffing.
- Most accessibility features will be available on the day of the test to *any* student who wishes to use them; however, a some *must* be either designated in the test's online system or requested and approved before testing because they require additional preparation or a specific setting in the test platform.
 - **NOTE:** Both the NGSA and PSAT 10/SAT use different versions of the TIDE system for assigning accommodations. Accommodations and accessibility features **will not** transfer from the NGSA TIDE to the PSAT 10/SAT TIDE or vice versa. Test supports must be designated in each TIDE system separately.
- Principals have the flexibility to test *any* student, including non-disabled and non-EL students, using the accessibility features listed on the following pages as long as all requirements for testing conditions and staffing are met.
- It is advisable, although not required, to include accessibility features in the IEP, 504, or EL plan of any student who has one of these plans.

Table 1: Accessibility Features (available to any student, regardless of disability or EL status)

Test Support Name	Test	Student Status	Support Group	Embedded Support <i>Use information in this column for the computer-based edition of the test. Some test supports can be provided outside the test platform.</i>	External or Non-Embedded Support <i>Use information in this column for paper-based edition of the test or if the test support must be provided outside of the test platform.</i>
Adaptive or Specialized Furniture	ACCESS, DLM, NGSA, RICAS	Any Student	Accessibility Feature	<i>May be provided as a non-embedded support.</i>	ADAPTIVE OR SPECIALIZED EQUIPMENT OR FURNITURE. Some students may require specialized equipment or furniture including (but not limited to) special seating, weighted vests, fidget tools, noise-reducing headphones, specialized lighting or acoustics, or adaptive keyboards, desks, or lighting. <i>For ACCESS: See page 3 in the WIDA Accessibility and Accommodations Manual.</i> DLM PNP Profile, NGSA/SAT TIDE, RICAS PNP: Not Recorded
	PSAT10_SAT	IEP/504 Only	Accommodation	ADAPTIVE OR SPECIALIZED FURNITURE. <i>This is an accommodation for PSAT 10 and SAT.</i>	
Answer Eliminator	NGSA	Any Student	Accessibility Feature	ANSWER ELIMINATOR. This tool allows the student to mark an "X" through each answer option they think is incorrect. If an answer option is an image, it will be grayed out. Note: Defaulted to <i>ON</i> for all students. NGSA TIDE: Not Recorded	ANSWER ELIMINATOR. Student uses a pencil to mark an "X" through each answer option they think is incorrect in the paper edition or print out of test items. NGSA TIDE: Not Recorded
	RICAS	Any Student	Accessibility Feature	ANSWER ELIMINATOR. This tool allows the student to mark an "X" through each answer option they think is incorrect. RICAS PNP: Not Recorded	ANSWER ELIMINATOR. Student uses a pencil to mark an "X" through each answer option they think is incorrect in the answer booklet. RICAS PNP: Not Recorded
	PSAT10_SAT	Any Student	Accessibility Feature	STRIKETHROUGH. This tool allows the student to mark an "X" through each answer option they think is incorrect. If an answer option is an image, it will be grayed out. Note: Defaulted to <i>ON</i> for all students. PSAT10_SAT TIDE: Not Recorded	STRIKETHROUGH. Student uses a pencil to mark an "X" through each answer option they think is incorrect in the paper edition or print out of test items. PSAT10_SAT TIDE: Not Recorded
Answer Masking	ACCESS	Any Student	Accessibility Feature	<i>May be provided as a non-embedded support.</i>	ANSWER MASKING. Test administrators may use a piece of paper to cover portions of the screen to reduce visual clutter without otherwise affecting the information or number of response options. WIDA AMS: Not Recorded
Answer Masking	DLM	Any Student	Accessibility Feature	<i>May be provided as a non-embedded support.</i>	ANSWER MASKING. Test administrators may use a piece of paper to cover portions of the screen to reduce visual

Test Support Name	Test	Student Status	Support Group	Embedded Support <i>Use information in this column for the computer-based edition of the test. Some test supports can be provided outside the test platform.</i>	External or Non-Embedded Support <i>Use information in this column for paper-based edition of the test or if the test support must be provided outside of the test platform.</i>
					clutter without otherwise affecting the information or number of response options. DLM PNP Profile: Not Recorded
	NGSA	Any Student	Accessibility Feature	ANSWER MASKING. This tool blocks off content, test items, or answer options that may be distracting so the student can focus their attention on a specific part of a test item. NGSA TIDE: Answer Masking	ANSWER MASKING. For students taking the paper-edition, they can use blank page to block off test content, test items, or answer options that may be distracting so the student can focus their attention on a specific part of a test item. NGSA TIDE: Not Recorded
	PSAT10_SAT	IEP/504	Accommodation	ANSWER MASKING. <i>This is an accommodation for PSAT 10 and SAT.</i>	
	RICAS	Any Student	Accessibility Feature	ANSWER MASKING. This tool blocks off content, test items, or answer options that may be distracting so the student can focus on a specific part of a test item. RICAS PNP: Column T	ANSWER MASKING. Students can use blank page to block off test content, test items, or answer options that may be distracting so the student can focus on a specific part of the test item. RICAS PNP: Not Recorded
AT/AAC Devices	ACCESS	IEP/504/EL	Accessibility Feature	Updated for 2022. AAC DEVICES. An Assistive/Augmentative Communication (AAC) device is considered the voice of a student who is unable to produce functional speech. Use of an AAC during testing should be consistent with the student's day-to-day instruction and communication methods and is not considered an accommodation. <i>See the WIDA Accommodations and Accessibility Features Manual, page 21 for instructions on how to administer the ACCESS tests to students using AAC devices.</i>	
					ALTERNATIVE MICROPHONE. Students may feel uncomfortable speaking into the microphone attached to the headset. Students may use an alternate microphone (not attached to a headset), such as a microphone built into the computer or one that attaches to the device using a USB port. Bluetooth and other alternative microphone set-ups may not be compatible with test engine. Check for compatibility prior to the day of testing using the online Speaking practice test. <i>See page 3 in the WIDA Accessibility and Accommodations Manual.</i>
	DLM	IEP/504	Accommodation	ASSISTIVE TECHNOLOGY. <i>This is an accommodation for DLM.</i>	
	NGSA	IEP/504	Accommodation	ASSISTIVE TECHNOLOGY. <i>This is an accommodation for NGSA.</i>	
	RICAS	IEP/504	Accommodation	ASSISTIVE TECHNOLOGY. <i>This is an accommodation for RICAS.</i>	
	PSAT10_SAT	IEP/504	Accommodation	ASSISTIVE TECHNOLOGY. <i>This is an accommodation for PSAT 10 and SAT.</i>	

Test Support Name	Test	Student Status	Support Group	Embedded Support <i>Use information in this column for the computer-based edition of the test. Some test supports can be provided outside the test platform.</i>	External or Non-Embedded Support <i>Use information in this column for paper-based edition of the test or if the test support must be provided outside of the test platform.</i>
Auditory Supports	ACCESS	Any Student	Accessibility Feature	AUDIO AIDS: A tool that the student can use to amplify or diminish sound. Audio aids include: amplification devices, noise buffers, and white noise machines. <ul style="list-style-type: none"> Noise buffers must be compatible with the requirements of the test (i.e., allow the student to hear listening items). Smart phones cannot be used. Music or other recordings may not be played on headphones worn during testing. See the <i>WIDA Accommodations and Accessibility Features Manual</i>, page 5 for more information. <hr/> COMPUTER-BASED TEST: Noise canceling headphones or earbuds may be connected to the computer. Be aware that some headphones may not be compatible with hearing aids or cochlear implants. In these situations, the student may participate in online testing by playing the sound through the computer's external speakers. Students using speakers must be tested in a separate setting.	PAPER-BASED TEST: Noise canceling headphones, earplugs, earphones, or other noise buffers not connected to an audio device may be used during paper-based testing for Reading, Writing, and Speaking. For the Listening test, students may need to use the noise buffers connected directly to the device used to play the Listening and Speaking CD.
	NGSA, RICAS	Any Student	Accessibility Feature	<i>May be provided as a non-embedded support.</i>	AMPLIFICATION.. Volume control, amplification device, FM system, noise buffer, noise-cancelling earmuffs/headphones, white noise machine. NOTE: Smart phones cannot be used. Music or other recordings may not be played on headphones during testing. NGSA TIDE: Amplification RICAS PNP: Not Recorded
	DLM	Any Student	Accessibility Feature	AMPLIFICATION. The volume of the testing device may be increased using computer controls. DLM PNP Profile: Not Recorded	AUDITORY AMPLIFICATION/FM SYSTEM. Student uses an auditory amplification device or special sound system to hear the test administrator. DLM PNP Profile: Not Recorded
	PSAT10_SAT	IEP/504	Accommodation	AUDITORY SUPPORTS. <i>This is an accommodation for PSAT 10 and SAT.</i>	

Test Support Name	Test	Student Status	Support Group	Embedded Support <i>Use information in this column for the computer-based edition of the test. Some test supports can be provided outside the test platform.</i>	External or Non-Embedded Support <i>Use information in this column for paper-based edition of the test or if the test support must be provided outside of the test platform.</i>
Assistance from a test administrator regarding the use of the computer-based testing platform.	ACCESS, DLM, RICAS, NGSAT, PSAT 10	Any Student	Accessibility Feature	May be provided as a non-embedded support.	<p>ASSISTANCE FROM A TEST ADMINISTRATOR REGARDING THE USE OF THE COMPUTER-BASED TESTING PLATFORM. The supports below must be provided to any student who requires them during the testing session, including students with disabilities and EL students:</p> <ul style="list-style-type: none"> • This only refers to helping a student navigate these test platforms: <ul style="list-style-type: none"> ○ RICAS: TestNav ○ PSAT 10: Test Delivery System (TDS) ○ NGSAT: Test Delivery System (TDS) ○ DLM: Kite Student Portal ○ ACCESS: WIDA AMS • Test administrators are not to help students answer a test question. • This also does not remove the responsibility of schools to teach students how to navigate the online test systems prior to testing. Students should become familiar with the features and basic functionality of the computer-based testing platforms by viewing student tutorials and taking online practice tests prior to test administration.
Breaks	ACCESS	EL	Accessibility Feature	May be provided as a non-embedded support.	<p>SUPERVISED BREAKS. Students may take breaks as needed. These breaks might be planned in advance based on student need based on a student's specific needs (e.g., fatigues easily, overly anxious).</p> <p>SHORT SEGMENTS. If the student requires breaks beyond the 30 minutes allotted for the test, then a paper version may be necessary. Each domain must be completed on the same day.</p> <p><i>See the WIDA Accommodations and Accessibility Features Manual, page 3 for more information.</i></p>
	DLM	Any Student	Accessibility Feature	BREAKS. The DLM alternate assessments are highly individualized for each student depending on their abilities and challenges. This includes scheduling testing, including breaks, to maximize student engagement and participation.	
	NGSAT	Any Student	Accessibility Feature	May be provided as a non-embedded support.	<p>BREAKS. Student requires extra breaks, extended breaks, or breaks as needed.</p> <p>NGSAT TIDE: Not Recorded</p>

Test Support Name	Test	Student Status	Support Group	Embedded Support <i>Use information in this column for the computer-based edition of the test. Some test supports can be provided outside the test platform.</i>	External or Non-Embedded Support <i>Use information in this column for paper-based edition of the test or if the test support must be provided outside of the test platform.</i>
	RICAS	Any Student	Accessibility Feature	<i>May be provided as a non-embedded support.</i>	The following options are available for breaks. Breaks can be scheduled in a way that promotes the student's participation in the test. <ul style="list-style-type: none"> • EXTRA BREAKS • EXTENDED BREAKS • BREAKS AS NEEDED RICAS PNP: Not Recorded
	PSAT10_SAT	IEP/504	Accommodation	BREAKS. <i>This is an accommodation for PSAT 10 and SAT.</i>	
Calculators or Mathematics Tools	NGSA	Any Student	Accessibility Feature	DESMOS CALCULATOR. A Desmos calculator is available in the Test Delivery System for any item requiring a calculator. NGSA TIDE: Not Recorded	CALCULATOR. Schools can provide hand-held scientific calculators to students. Four-function and graphing calculators are acceptable. NGSA TIDE: Not Recorded
					MATHEMATICS TOOLS. Student uses arithmetic tables for addition, subtraction, multiplication, and division, including an abacus or other manipulatives. NOTE: Formulas or formula sheets may not be provided. NGSA TIDE: Not Recorded
	DLM, PSAT 10_SAT, RICAS	IEP/504	Accommodation	CALCULATOR OR MATHEMATICS TOOLS. <i>This is an accommodation for DLM, PSAT 10, SAT, and RICAS.</i>	
Color Contrast	ACCESS	Any Student	Accessibility Feature	COLOR ADJUSTMENTS. A student can change the color of the text and background. <i>See the WIDA Accommodations and Accessibility Features Manual, page 6 for more information.</i>	COLOR OVERLAY. The student can use a color overlay or acetate shield of their choice to lay over the text booklet page.
	DLM	IEP/504	Accommodation	COLOR CONTRAST. <i>This is an accommodation for DLM.</i>	
	NGSA	Any Student	Accessibility Feature	COLOR CONTRAST. The following text and background combinations are available in TIDE: <ul style="list-style-type: none"> • black text on white background (default) • black text on rose background • gray text on light gray background • yellow text on blue background • reverse contrast (white text on black background) NGSA TIDE: Color Contrast	COLOR OVERLAY. Students can use a color overlay of their choice. NGSA TIDE: Not Recorded
	PSAT10_SAT	IEP/504	Accommodation	COLOR CONTRAST. <i>This is an accommodation for PSAT 10 and SAT.</i>	
	RICAS	Any Student	Accessibility Feature	ALTERNATIVE BACKGROUND AND FONT COLOR. Selects an alternative color combination for the text (font color)	COLOR OVERLAY. The student can use a color overlay or acetate shield of their choice if using a paper test booklet.

Test Support Name	Test	Student Status	Support Group	Embedded Support <i>Use information in this column for the computer-based edition of the test. Some test supports can be provided outside the test platform.</i>	External or Non-Embedded Support <i>Use information in this column for paper-based edition of the test or if the test support must be provided outside of the test platform.</i>
				and background. If selected, student may change the alternative color combination during testing. These combinations are available: <ul style="list-style-type: none"> • black text on white background (default) • 01 = black text on cream background • 02 = black text on light blue background • 03 = black text on light magenta background • 04 = white text on black background • 05 = yellow text on blue background • 06 = dark gray text on pale green background PNP Column S Alternative Background and Font Color	An acetate shield can be taped over the computer screen if one the preferred color contrast option is not available. PNP: Not Recorded
Emergency Accommodation	ACCESS, DLM, NGSA, RICAS	Any Student		EMERGENCY ACCOMMODATION. An emergency accommodation is appropriate in cases where a student needs a new accommodation immediately prior to the assessment due to unforeseen circumstances. <i>See Emergency Accommodations for more information.</i>	
Expandable Passages	NGSA, SAT_PSAT10	Any Student	Accessibility Feature	EXPANDABLE PASSAGES. Each passage or stimulus can be expanded so that one or the other occupies a larger portion of the screen. Default is <i>ON</i> for all students. NGSA and PSAT10_SAT TIDE: Not Recorded	N/A
Extended Time	ACCESS	IEP/504	Accessibility Feature	EXTENDED TESTING TIME. (Updated for 2022) Testing times are to assist with planning. Allow students to continue testing as long as they are working productively, up to the end of the school day. See page 35 for information on the Extended Speaking Test Response Time and Testing Over Multiple Days accommodations.	
	DLM	IEP/504/EL	Accessibility Feature	EXTENDED TIME. Testing times are to assist with planning. Allow students to continue testing as long as they are working productively.	
	NGSA RICAS	Any Student	Accessibility Feature	<i>May be provided as a non-embedded support.</i>	EXTENDED TIME. Testing times are to assist with planning. Allow students to continue testing as long as they are working productively. NGSA TIDE: Not Recorded RICAS PNP: Not Recorded
	SAT_PSAT10	IEP/504/EL	Accommodation	EXTENDED TIME. <i>Extended time is an accommodation for PSAT 10 and SAT. See page 36 for information on options for students with disabilities and EL students.</i>	

Test Support Name	Test	Student Status	Support Group	Embedded Support <i>Use information in this column for the computer-based edition of the test. Some test supports can be provided outside the test platform.</i>	External or Non-Embedded Support <i>Use information in this column for paper-based edition of the test or if the test support must be provided outside of the test platform.</i>
Familiar Test Administrator	ACCESS DLM NGSA RICAS	Any Student	Accessibility Feature	<i>May be provided as a non-embedded support.</i>	FAMILIAR TEST ADMINISTRATOR. Someone familiar to the student who is not the classroom teacher, may administer the test. This could include a speech pathologist, TVI, etc. Anyone involved in test administration must meet all criteria to become a test administrator, sign all necessary confidentiality and security documents, and participate in all required training. DLM PNP Profile: Not Recorded NGSA TIDE: Not Recorded RICAS PNP: Not Recorded
Highlighter	DLM	IEP/504	<i>Accommodation</i>	HIGHLIGHTER. This is an accommodation for DLM.	
	ACCESS	Any Student	Accessibility Feature	HIGHLIGHTERS, COLORED PENCILS, OR CRAYONS. The embedded highlighter tool is used for marking desired text with a color. <i>See the WIDA Accommodations and Accessibility Features Manual, page 6 for more information.</i>	HIGHLIGHTERS, COLORED PENCILS, OR CRAYONS. Student uses their preferred writing tool(s) to mark specific text in the test booklet. Highlighters, highlighter tape, page flags, and reading guides are all acceptable.
	NGSA, PSAT10_SAT, RICAS	Any Student	Accessibility Feature	HIGHLIGHTER. The embedded highlighter tool is used for marking desired text with a color. Highlighted text remains available through the test segment. Defaulted to <i>ON</i> for all students. NGSA & CB TIDE: Not Recorded RICAS PNP: Not Recorded	HIGHLIGHTER. Student uses their preferred writing tool(s) to mark specific text in the test booklet. Highlighters, highlighter tape, page flags, and reading guides are all acceptable. NGSA & CB TIDE: Not Recorded RICAS PNP: Not Recorded
Line Reader	ACCESS	Any Student	Accessibility Feature	LINE GUIDE or TRACKING TOOL. A tool that the student can use to guide his or her eyes while reading text. Students should be able to use a mouse and click-and-drag in order to position the line guide. <i>See the WIDA Accommodations and Accessibility Features Manual, page 6 for more information.</i>	LINE GUIDE or TRACKING TOOL. A tool that the student can use to guide his or her eyes while reading text. The student can use the same tracking tool or line guide they use during instruction (e.g., note card, bookmark, cut-out sentence highlighting strip).
	NGSA, PSAT10_SAT, RICAS	Any Student	Accessibility Feature	LINE READER. The embedded line reader tool masks the text so only part of the text can be view at one time. Can be raised or lowered for each line of text on the screen. NOTE: Defaulted to <i>ON</i> for all students. NGSA & CB TIDE: Not Recorded RICAS PNP: Not Recorded	LINE READER. If a student uses a paper edition of the test or a paper copy of a passage or test item, two sheets of paper, blank card, or cut-out may be used as a line reader. NGSA & PSAT10_SAT TIDE: Not Recorded PNP: Not Recorded
	DLM			LINE READER.	

Test Support Name	Test	Student Status	Support Group	Embedded Support <i>Use information in this column for the computer-based edition of the test. Some test supports can be provided outside the test platform.</i>	External or Non-Embedded Support <i>Use information in this column for paper-based edition of the test or if the test support must be provided outside of the test platform.</i>
Magnification Tool or Device	ACCESS	Any Student	Accessibility Feature	LOW VISION AIDS OR MAGNIFICATION DEVICES. A magnifier tool is built into the test platform. Students must scroll to see all the content when the test is magnified, and they must return to the default size to use other tools, such as the highlighter.	LOW VISION AIDS OR MAGNIFICATION DEVICES. Students may use a low-vision device with a regular or large-print test booklet. <i>See the WIDA Accommodations and Accessibility Features Manual, page 7 for more information on magnification devices.</i> <i>See the LARGE-PRINT EDITION accommodation and page 14 in the WIDA Accommodations and Accessibility Features Manual for more information.</i>
	DLM	IEP Only	Accommodation	MAGNIFICATION and LARGE PRINT EDITION. <i>These are accommodations for DLM.</i>	
	RICAS	Any Student	Accessibility Feature	MAGNIFIER TOOL. (Accessibility Feature) Magnifier tool enlarges part of the screen; Zoom tool enlarges or reduces entire screen by pressing Ctrl - or Ctrl +. RICAS PNP: Not Recorded	MAGNIFICATION DEVICE (Accommodation for a student with a documented disability who requires a magnification device). The student uses an external device such as a Smart Board, closed-circuit TV or hand-held magnification device to enlarge the computer display or paper test. Device cannot be connected to internet or be able to record images. RICAS PNP: Not Recorded <i>See the LARGE-PRINT EDITION accommodation for students who will take the paper version of the test.</i>
	NGSA	Any Student	Accessibility Feature	ZOOM or MAGNIFIER TOOL. Increase the font size displayed on the screen. Sizes are: 1x (default setting), 1.5x, 1.75x, 2.5x, 3x, 5x, 10x, 15x, 20x. NGSA TIDE: Magnification (<i>select the magnification size</i>) and Streamline Mode (settings from 5x to 20x).	MAGNIFICATION DEVICE: <i>This is an accommodation for NGSA. See MAGNIFICATION options and LARGE PRINT EDITION for more information.</i>
	PSAT10_SAT	Any Student	Accessibility Feature	ZOOM IN/ZOOM OUT. Increases the font size displayed on the screen. Sizes are: <ul style="list-style-type: none"> Level 1 - 24 point (default) Level 2 - 31 point Level 3 - 41 point Level 4 - 51 point Level 6 - 172 point Level 7 - 229 point Level 9 - 340 point CB TIDE: Levels 1-4 do not need to be set in TIDE. Instead, set through the Universal Tool in the online test system. Levels 5-9 need to be set in TIDE.	MAGNIFICATION DEVICE: <i>This is an accommodation for PSAT 10 and SAT. See MAGNIFICATION options and LARGE PRINT EDITION for more information.</i>

Test Support Name	Test	Student Status	Support Group	Embedded Support <i>Use information in this column for the computer-based edition of the test. Some test supports can be provided outside the test platform.</i>	External or Non-Embedded Support <i>Use information in this column for paper-based edition of the test or if the test support must be provided outside of the test platform.</i>
Mark for Review	NGSA, PSAT10_SAT	Any Student	Accessibility Feature	MARK FOR REVIEW. Students/scribes can mark items for review and return to them at a later time. The default will be <i>ON</i> for all students. NOTE: If an answer option is selected when the student marks an item for review, the answer will not be saved when the student moves on to the next segment or after a break of more than 20 minutes. NGSA & CB TIDE: Not Recorded	MARK FOR REVIEW. Students taking the paper test can mark items with a blank place card for review at a later time. NGSA & CB TIDE: Not Recorded
	RICAS	Any Student	Accessibility Feature	MARK FOR REVIEW. Student can mark test items for review and return at a later time. RICAS PNP: Not Recorded	MARK FOR REVIEW. Student can use a blank place marker with a paper edition of a test(s) to mark test items for review at a later time. RICAS PNP: Not Recorded
Mouse Pointer	RICAS	Any Student	Accessibility Feature	ALTERNATE CURSOR/MOUSE POINTER. The mouse pointer and/or the cursor can be magnified and the color can be changed for students with visual impairments. The degree of magnification and color of the mouse pointer and/or cursor must be selected in SR/PNP prior to testing. Options are: <ul style="list-style-type: none"> • M = Medium • L = Large • XL = Extra Large • XLB = Extra Large Black • XLG = Extra Large Green • XLY = Extra Large Yellow RICAS PNP Column R (Alternate Cursor/Mouse Pointer)	N/A
	NGSA	Any Student	Accessibility Feature	MOUSE POINTER. The mouse pointer can be magnified and the color can be changed for students with visual impairments or those who are using a color contrast option. The degree of magnification and color of the mouse pointer must be selected in TIDE prior to testing. Color options are: black, green, red, white, or yellow. NGSA TIDE: Mouse Pointer	N/A
	PSAT10_SAT	Any Student	Accommodation	MOUSE POINTER. <i>This is an accommodation for PSAT 10 and SAT.</i>	

Test Support Name	Test	Student Status	Support Group	Embedded Support <i>Use information in this column for the computer-based edition of the test. Some test supports can be provided outside the test platform.</i>	External or Non-Embedded Support <i>Use information in this column for paper-based edition of the test or if the test support must be provided outside of the test platform.</i>
Notepad or Scratch Paper	ACCESS	Any Student	Accessibility Feature	<p>STICKY NOTES. A sticky notes tool is built into the testing tool for the writing test and can be used for notes, drafts, and diagrams. Sticky notes do not maintain content between screens. Sticky notes are available only on some screens.</p> <p>SCRATCH PAPER. <i>May also be provided as a non-embedded support.</i></p> <p><i>See the WIDA Accommodations and Accessibility Features Manual, page 7, for more information.</i></p>	<p>SCRATCH PAPER. Scratch paper should be available to students upon request for all other language domains and grade levels. <i>Only student work in the test booklet will be scored.</i></p> <p>Allowable types of scratch paper: Scratch paper can be any blank writing surface, including plain or colored paper, grid, wide-ruled, braille paper, raised-line paper, bold-line paper, raised-line grid paper, bold-line grid paper, or colored paper. Students may alternately use an individual, erasable whiteboard as scratch paper for notes and responses. <i>No graphic organizers may be provided.</i></p>
Notepad or Scratch Paper	NGSA	Any Student	Accessibility Feature	<p>NOTEPAD. Student uses the embedded note-taking tool in the Test Delivery System.</p> <p>NGSA TIDE: Not Recorded</p>	<p>SCRATCH PAPER. Lined, unlined, graphing paper, or other blank paper may be provided.</p> <p>NGSA TIDE: Not Recorded</p>
	RICAS	Any Student	Accessibility Feature	<p>NOTEPAD. The notepad feature in PAN may be used for notes and calculations.</p> <p>RICAS PNP: Not Recorded</p>	<p>SCRATCH PAPER. Lined, unlined, graph, or other blank paper may be provided to any student.</p> <p>RICAS PNP: Not Recorded</p>
	SAT/PSAT 10			<p>NOTEPAD or SCRATCH PAPER (Accessibility Feature). Everyone taking the computer-based test will receive one piece of scratch paper as part of the general administration.</p> <p>CB TIDE: Not Recorded</p>	<p>SCRATCH PAPER (Accommodation). Use of additional blank paper for recording answers.</p> <p>NOTE: The scores of tests where students are given lined or graph paper will not be accepted by colleges and universities for admissions purposes. Students will receive score reports and scores will be used for state accountability purposes.</p> <p>SSD Online: Other Recording Answers</p> <p>CB TIDE: Not Recorded</p>
One-to-One	ACCESS NGSA RICAS	IEP/504	Accessibility Feature	<p><i>May be provided as a non-embedded support.</i></p>	<p>INDIVIDUAL OR ONE-TO-ONE SETTING. Test students individually, in small groups, or other grouping that reflects their typical classroom environment. Follow policy below for creating small groups.</p> <p><i>See the WIDA Accommodations and Accessibility Features Manual, page 4 for more information.</i></p> <p>NGSA TIDE: Not Recorded</p> <p>RICAS PNP: Not Recorded</p>
	DLM			ONE-TO-ONE ADMINISTRATION. DLM is designed to be administered to each student individually.	
	PSAT10_SAT	IEP/504	Accommodation	ONE-TO-ONE ADMINISTRATION. <i>Is an accommodation for PSAT 10 and SAT.</i>	

Test Support Name	Test	Student Status	Support Group	Embedded Support <i>Use information in this column for the computer-based edition of the test. Some test supports can be provided outside the test platform.</i>	External or Non-Embedded Support <i>Use information in this column for paper-based edition of the test or if the test support must be provided outside of the test platform.</i>
Preferential Seating	ACCESS	EL	Accessibility Feature	<i>May be provided as a non-embedded support.</i>	SPECIFIC SEATING. Seat students any place in the testing room that helps them hear, see, focus, or otherwise engage with the test. Seating arrangements must ensure the student can access test materials, hear the test administrator and any recorded audio, and be monitored. <i>See the WIDA Accommodations and Accessibility Features Manual, page 4 for more information.</i>
	NGSA RICAS	Any Student	Accessibility Feature	<i>May be provided as a non-embedded support.</i>	PREFERENTIAL SEATING. Student takes the test in a specific area of the testing room where they are most comfortable; including use of study carrel. Seating arrangements must ensure the student can access test materials, hear the test administrator and any recorded audio, and be monitored. TIDE: Not Recorded PNP: Not Recorded
	PSAT10_SAT	IEP/504	Accommodation	PREFERENTIAL SEATING. <i>This is an accommodation for PSAT 10 and SAT.</i>	
Read Aloud Selected Words	NGSA RICAS	Any Student	Accessibility Feature	<i>May be provided as a non-embedded support.</i>	READ ALOUD SELECTED WORDS. The test administrator reads aloud (or signs, in the case of a student who is deaf or hard-of-hearing) selected words on the RICAS math test or the NGSA science test, as requested by the student. The student will point to the word or phrase that he or she needs read aloud or signed. Test administrator quietly reads aloud or signs the selected word to the student. Students using this feature may be tested alongside other students in groups of any size. TIDE: Not Recorded PNP: Not Recorded
Read Aloud, Repeat, or Clarify General Test Instructions	ACCESS	Any Student	Accessibility Feature	<i>May be provided as a non-embedded support.</i>	READ ALOUD, REPEAT, CLARIFY GENERAL TEST DIRECTIONS The test administrator must be available and meet the criteria for administering a state assessment as outlined in the Test Coordinator Handbook. General Test Directions do not include any part of any test item, response options, or text (reading passages, charts, graphs, or diagrams) included with the test item.

Test Support Name	Test	Student Status	Support Group	Embedded Support <i>Use information in this column for the computer-based edition of the test. Some test supports can be provided outside the test platform.</i>	External or Non-Embedded Support <i>Use information in this column for paper-based edition of the test or if the test support must be provided outside of the test platform.</i>
Read Aloud, Repeat, or Clarify General Test Instructions	PSAT10_SAT	Any Student	Accessibility Feature	<i>May be provided as a non-embedded support.</i>	<p>READ ALOUD, REPEAT, CLARIFY GENERAL TEST DIRECTIONS. The test administrator may read aloud, repeat, or clarify the test directions for a student, in English. The test administrator must be available and meet the criteria for administering a state assessment as outlined in the Test Coordinator Handbook.</p> <p>General Test Directions do not include any part of any test item, response options, or text (reading passages, charts, graphs, or diagrams).</p> <p>WRITTEN COPY OF ORAL INSTRUCTIONS.</p> <p>SSD Online: Not Recorded</p>
	RICAS NGSA	Any Student	Accessibility Feature	<i>May be provided as a non-embedded support.</i>	<p>READ ALOUD, REPEAT, CLARIFY GENERAL TEST DIRECTIONS. The test administrator may read aloud, repeat, or clarify the test directions for a student, in English. The test administrator must be available and meet the criteria for administering a state assessment as outlined in the Test Coordinator Handbook.</p> <p>General Test Directions do not include any part of any test item, response options, or text (reading passages, charts, graphs, or diagrams) included with the test item.</p> <p>RICAS PNP: Not Recorded</p> <p>NGSA TIDE: Not Recorded</p>
Read Aloud to Self	ACCESS DLM NGSA RICAS	Any Student	Accessibility Feature	<i>May be provided as a non-embedded support.</i>	<p>READ ALOUD TO SELF. A student may read the assessment aloud to themselves. Test student in a separate setting unless a low-volume device is used, like a Whisper phone.</p> <p><i>For ACCESS: See the WIDA Accommodations and Accessibility Features Manual, page 4 for more information.</i></p> <p>NGSA TIDE: Not Recorded</p> <p>RICAS PNP: Not Recorded</p>
	PSAT10_SAT	Any Student	Accommodation	READ ALOUD TO SELF. <i>This is an accommodation for PSAT 10 and SAT.</i>	

Test Support Name	Test	Student Status	Support Group	Embedded Support <i>Use information in this column for the computer-based edition of the test. Some test supports can be provided outside the test platform.</i>	External or Non-Embedded Support <i>Use information in this column for paper-based edition of the test or if the test support must be provided outside of the test platform.</i>
Redirect student's attention to the test	ACCESS DLM NGSA RICAS	Any Student	Accessibility Feature	<i>May be provided as a non-embedded support.</i>	REDIRECTION. Test administrator redirects student's attention to the test when they are exhibiting off-task behavior. The test administrator may not coach or assist the student in any way. The test administrator may redirect the student in English or the student's native language. <i>For ACCESS: See the WIDA Accommodations and Accessibility Features Manual, page 4 for more information.</i> DLM PNP Profile: Not Recorded NGSA TIDE: Not Recorded RICAS PNP: Not Recorded
Reference Sheets: Periodic Table	NGSA	Any Student	Accessibility Feature	PERIODIC TABLE. There are approved periodic tables that students must use in grades 8 and 11. These periodic tables can be accessed by students through the Test Delivery System during testing or copies can be provided on paper. <i>NGSA is the only test that requires students to use the Periodic Table.</i>	
				<i>Computer-based test in Spanish:</i> Students must have a paper copy of the Periodic Table in Spanish. This version is not available in the Test Delivery Engine. NGSA TIDE: Not Recorded	<i>Paper-based test:</i> Download Periodic Tables in English and Spanish from the TIDE portal or from the RIDE Assessment Manuals page for printing (www.ride.ri.gov/assessment-manuals). NGSA TIDE: Not Recorded
Small Group Administration	ACCESS NGSA RICAS	Any Student	Accessibility Feature	<i>May be provided as a non-embedded support.</i>	SMALL GROUP SETTING. Test students individually, in small groups, or other grouping that reflects their typical classroom environment. Follow policy below for creating small groups. <i>See the WIDA Accommodations and Accessibility Features Manual, page 4 for more information.</i> NGSA TIDE: Not Recorded RICAS PNP: Not Recorded RI STATE POLICY ON SMALL GROUPS. Small groups may not have more than ten students. The ideal group size is two to eight students. Students in small groups should have the same or similar accommodations.
	DLM			SMALL GROUP ADMINISTRATION. DLM is designed to be administered to each student individually. Administering the DLM test to students in small groups of any kind are prohibited and considered a testing violation.	
Specific Time of Day	NGSA RICAS	Any Student	Accessibility Feature	<i>May be provided as a non-embedded support.</i>	SPECIFIC TIME OF DAY. Testing time can be adjusted to accommodate the student's needs. NGSA TIDE: Not Recorded RICAS PNP: Not Recorded

Test Support Name	Test	Student Status	Support Group	Embedded Support <i>Use information in this column for the computer-based edition of the test. Some test supports can be provided outside the test platform.</i>	External or Non-Embedded Support <i>Use information in this column for paper-based edition of the test or if the test support must be provided outside of the test platform.</i>
Streamline Mode	NGSA	Any Student	Accessibility Feature	STREAMLINE MODE. This format rearranges how the item on the computer screen. The item stimuli is displayed above the item stem and response options. NOTE: When magnification is 5x or above, streamline mode automatically turns on. NGSA TIDE: Streamline Mode	N/A
	PSAT10_SAT	IEP/504 only	Accommodation	STREAMLINE MODE. <i>This is an accommodation for PSAT 10 and SAT.</i>	

III. Participation Requirements for State Assessments

All students, including students with disabilities and English learners (ELs), are expected to participate in all state assessments for their current grade¹. Students with significant cognitive disabilities who meet all three eligibility criteria will take the Dynamic Learning Maps (DLM) alternate assessments in English language arts, mathematics, and science (if applicable). In addition, ELs with significant cognitive disabilities who are unable to participate in the ACCESS for ELLs, even with accommodations, must take the Alternate ACCESS for ELLs. The information in this manual is intended to guide decision-making by Individualized Education Program (IEP) teams and 504 plan coordinators as to *how*, not *whether*, students with disabilities will participate in the Rhode Island State Assessment Program. Appendix A of this manual contains a table of required tests by grade level.

Participation Requirements for Students with Disabilities

Please note the following about student participation in state assessments:

- State and federal education laws assume that *all* students with disabilities educated with Rhode Island public funds are expected to participate in annual statewide assessments, including students enrolled in public schools, charter schools, educational collaboratives, and outplacement schools both within and outside of Rhode Island, as well as students incarcerated at the RI Training School.
- Students with disabilities are expected to participate in the grade-level¹ tests that correspond with the grade reported to RIDE's Enrollment Census. If you have questions about the grade level for a student in one of the online test platforms, contact your district test coordinator or special education director.
- Assessment and accommodations decisions for students with disabilities should be revisited each year. All accommodations must be listed in the IEP or 504 Plan.
- Although including accommodations decisions at test supports in EL plans is not required, we encourage this practice in order to ensure that students receive the test supports they need.
- The principal is responsible for ensuring that each student is assessed using the test format and accommodations listed in the student's IEP, 504 plan, or EL plan.

Participation Requirements for Students Who Are English Learners (ELs)

EL students must participate in all statewide tests scheduled for their grades, regardless of the language program and services they are receiving or the amount of time they have been in the United States.

The one exception applies to first-year EL students who enrolled in U.S. schools **after April 1, 2021** for whom ELA testing is *not required*. **First-year EL students *must* participate in mathematics and science tests, as applicable.** Results will be reported for diagnostic purposes only; students' results will not be included in school and district accountability reporting.

¹ *Current Grade Level* is the grade level recorded in the Enrollment Census by the LEA. RIDE will register the student for all required tests at the grade level recorded in the Enrollment Census. Testing the student at any grade level other than what is in the Enrollment Census may result in test scores being invalidated. Additionally,

- *If a student skips a grade level*, the student **does not** make up tests for the skipped grade level.
- *If a student retained in the same grade level*, the student takes the tests for their current grade level **again**, even if the student took the test the previous year.

EL Participation Requirements for State Assessments

	ELA Test (PSAT10, SAT, RICAS, or DLM)	Mathematics Test (PSAT10, SAT, RICAS, or DLM)	Science Test (NGSA or DLM)
First-Year EL Students	<i>Not Required</i>	Required	Required
All Other Students	Required	Required	Required

For questions and information regarding the **identification screening, placement, and reclassification of EL students**, contact Flavia Molea-Baker, RIDE Office of Student, Community, and Academic Supports (OSCAS) at 401-222-8985 or flavia.moleabaker@ride.ri.gov or at: www.ride.ri.gov/ELs.

Participation Requirements for English Learners (ELs) with Disabilities

EL students with disabilities are entitled to receive test accommodations and to participate in the Rhode Island alternate assessments, the Dynamic Learning Maps, as determined by their IEP team.

If a Student Refuses an Accommodation

If a student refuses to use an accommodation listed in their plan, follow these guidelines:

- The accommodation must remain available to the student during testing.
- The school must document in writing that the student refused the accommodation and keep the documentation on file at the school. A sample form can be found in Appendix C: Student Accommodation Refusal Form. This form can also be downloaded from www.rid.ri.gov/accommodations.
- Students **may not** be asked to sign an agreement waiving their right to receive an accommodation.

Unique Accommodations Requests

If a student with a disability or an English learner requires an accommodation not listed in this manual, the school may request approval for use of the unique accommodation, provided the accommodation does **not**:

- fundamentally change the test or the construct being measured by the test.
- violate test security requirements.

Requesting Unique Accommodation Approval: Complete the Unique Accommodation in Appendix D or download from www.ride.ri.gov/accommodations and fax to 401-222-3605 at least two weeks prior to testing. If approved, amend the accommodation section in the IEP or 504 plan.

Participation Criteria for Alternate Assessments

Guidance on how to make eligibility decisions for the alternate assessments (DLM) can be found in *Guidance for IEP Teams* and is posted at www.ride.ri.gov/dlm. Be sure that all IEP team members read and review this document before making any final determination on whether or not a student should participate the DLM Alternate Assessments.

IV. Accommodations for Students with Disabilities

The District's Role in Monitoring the Selection of Accommodations

The information in this section is intended to guide decision-making regarding the selection, use, and evaluation of accommodations for testing. **IEP teams and 504 plan coordinators should identify and select only those accommodations for each assessment that are needed by the student.**

The test coordinator and the principal are responsible for ensuring that each student is provided with the test accommodations listed in his or her IEP or 504 plan. The student's plan must be revised as needed, either during routinely-scheduled meetings prior to testing or through the amendment process to ensure that only accommodations the student finds helpful and will use are included. It is also advisable (though not required) to list any *accessibility features* in the plans to ensure these will be also be provided.

Reliance on test accommodations should never replace appropriate and rigorous instruction based on grade-level standards in the subject being tested.

Accommodations for Students with Disabilities

Purpose of Test Accommodations

A test accommodation is a change in the way a test is given or the way in which a student responds to test questions. Test accommodations are intended to:

- offset the effects of the student's disability and remove barriers to participating in the assessment;
- provide the necessary conditions for a student to demonstrate knowledge and skills effectively on the assessments;
- provide the opportunity to report the test results of students who require accommodations;
- provide comparable test results to those of students who did not receive accommodations; and
- provide results that do not affect the validity or reliability of the test scores.

Accommodations may **not**:

- alter, explain, simplify, paraphrase, or eliminate any test question, reading passage, writing prompt, or multiple-choice answer option;
- provide verbal or nonverbal clues or suggestions that hint at *any* answer option;
- contradict test administration requirements or result in a violation of test security; e.g.,
 - modify, reorder, or reformat test questions in any way (see translation accommodations for information on when, and for which tests, translations are acceptable);
 - require paper-based tests be photocopied, photographed, scanned, altered, or duplicated in any way;
 - require screen shots of computer-based tests be taken;
 - require the use of English-language dictionaries for their administration.

Eligibility for Accommodations

ELIGIBLE: *students with disabilities served by an IEP or 504 plan*

The right for a student with a disability to receive accommodations on state assessments is protected by federal and state laws. Their plan **must** specify which accommodation(s) the student will receive.

NOT ELIGIBLE: *students without documented disabilities and students who are not served by an IEP or 504 plan*

A student who does not have a documented disability or who is not served by either an IEP or 504 plan is not eligible to receive accommodations on state assessments, regardless of whether the student currently receives instructional supports or accommodations on other types of assessments. Students who have intervention plans (RtI plans) or Personal Literacy Plans are not eligible to receive accommodations on state assessments; however, all students may use accessibility features.

If an Incorrect Accommodation Was Provided During Testing

In the event a student was provided the wrong accommodation or an accommodation that was not listed in their plan, the school should immediately contact the appropriate RIDE for guidance on how to proceed.

- **For RICAS:** If a student takes a test section twice due to a school decision to have the student retest with the correct accommodation, all or part of the student's score may be invalidated for accountability purposes. Families will still receive score reports.

Updating IEPs and 504 Plans

IEPs and 504 plans should be updated for all students with disabilities for statewide test administrations to reflect the updated policies and accommodations available. Including the appropriate designated accessibility features in the plans of students is also encouraged, but not required.

Amending IEPs or 504 Plans

If a student requires an accommodation that is not in their IEP or 504 Plan and there is not enough time before testing to convene a full IEP or 504 Plan team meeting, an amendment process can be followed to ensure that the accommodations section of the IEP or 504 Plan is updated prior to testing. The following is from *The IEP Process: Frequently Asked Questions* (p. 72, https://www.ride.ri.gov/Portals/0/Uploads/Documents/OSCAS/IEP-FAQ_2010-08-19_15.pdf).

These changes may be made at an IEP Team meeting with the entire IEP Team present. However, if the parent(s) of the child with a disability and the school district agree, the changes can be made without holding a meeting. In this case a written document would be developed amending the child's current IEP. Individuals are encouraged to refer to his/her district procedures and forms for amending the IEP with or without a meeting. If changes are made to the IEP without a meeting, the district must ensure that the child's IEP Team is informed of the changes.

Similarly, 504 plans must reflect only those accommodations required by the student. Consent by the parent/guardian is *not* required for a new or modified 504 plan, although the parent/guardian must be notified.

Process for Selecting and Evaluating Accommodations for a Students with a Disability

Accommodations are intended to offset the effects of a disability in order to allow a student to participate effectively in testing. When selecting accommodations, educators should consider the following:

- **Determine the learning challenges the student is experiencing and the effect the student's disability has on their learning and their ability to access the test independently.** Consider the student's classroom performance, not just the nature or type of disability. In other words, accommodations must mitigate the effect(s) of the disability and increase the student's ability to take the test. For example, providing a read aloud for a student with dyslexia may increase the student's ability to take the test. A

student with fine motor problems may benefit from a speech-to-text program or a scribe.

- **Brainstorm the use of various accommodations, accessibility features, and test administration considerations** with IEP team members and other adults familiar with the student.
 - What supports were used successfully with students who have similar learning profiles?
- **Try out the accommodation(s)** in different assessment settings and adjust as needed.
- **Evaluate whether the accommodation addresses the student's need.** If not, revise the plan to provide accommodation(s) and supports accordingly.

NOTE: Do not include accommodations “just in case” or “just because” it seems like a good idea or the teacher/IEP team is covering their bases. Accommodations should be thought out and deliberately selected to increase a student's independence and access to the test, not to mimic instructional strategies used in the classroom. For example: if calculators are used during instruction, that doesn't mean the student should have a calculator during the non-calculator section of the test if their disability doesn't affect their ability to perform calculations.

- **If the accommodation addresses the challenge,** determine whether the accommodation is allowed on the specific test(s);
 - develop or amend the IEP or 504 plan accordingly to include the accommodation(s) and the test(s) on which they will be used.

Accommodations for Students with Disabilities

Please note the following:

- See [Navigating the Table of Test Supports](#) for information on how to read Table 5.
- The following pages list the accommodations available to students with disabilities either through the test platform (embedded) or by a test administrator (external).
- **Special Access** accommodations are for the small number of students who meet the criteria outlined in the charts on the following pages.
- Accommodations that must be entered in the online test platform before testing have the name of the accommodation in the online test platform, and any other instructions, listed below.
- The accommodations are listed in alphabetical order.

RICAS Special Access Accommodations for Students with Disabilities

Special access accommodations are intended for use by a *very small number of students* who would not otherwise be able to access the test because of a disability that severely limits or prevents them from performing the skill in question. Teams must exercise caution when considering whether a student requires a special access accommodation, since these accommodations may alter part of what the test is designed to measure. Teams must carefully review the criteria described for each special access accommodation listed in Table 5 that follows. Test results for a student who took the test using special access accommodation(s) must be interpreted with caution by parents and schools.

NOTE: RIDE will review each district's rate of use of special access accommodations. To ensure that IEP teams and 504 plan coordinators carefully review and apply appropriate criteria for use of special access accommodations, districts must do the following:

- train members of IEP teams and 504 plan coordinators on the use of accommodations, including “special access” accommodations;
- review all guidelines with staff for special access accommodations listed in Table 5; and
- Revise the IEPs and 504 plans of students with disabilities as needed.

Although test accommodations should generally be consistent with accommodations used for instruction, the use of a “special access” accommodations during instruction *does not* automatically qualify a student to receive the same accommodation on a test **unless the student meets the criteria for that accommodation.**

IEP and 504 teams are encouraged to make consistent, defensible, and appropriate decisions for each student based on locally administered diagnostic assessments and to amend the IEPs and 504 plans of students who do not meet the criteria for the accommodation being considered.

Accessibility Features and Accommodations for EL Students

In addition to the accessibility features listed elsewhere in this manual, several accommodations are also available to ELs. Table 4 describes the relative suitability of each accommodation for students at beginning, intermediate, and advanced levels of English proficiency.

Table 4. Suitability of EL Accommodations based on English language proficiency of the student.

<p>● Highly recommended for use by English learners at this ELP level</p> <p>⊙ Recommended for use by English learners at this ELP level</p> <p>○ May not be appropriate for students at this ELP level</p>

Accommodation	Most Likely to Benefit English Learners at the Following English Proficiency Levels		
	Beginning (ELP levels 1-2)	Intermediate (ELP levels 3-4)	Advanced (ELP levels 5-6)
Approved bilingual word-to-word dictionary and glossary (English/Native Language)	○	●	●
Text-to-speech or Human read-aloud for the Mathematics tests in English	●	⊙	○
Human scribe or speech-to-text for Mathematics	●	⊙	○
Read aloud/repeat/clarify general administration directions in English (by test administrator)	●	⊙	○
Read aloud/repeat/clarify general administration directions in student's native language (by test administrator)	●	⊙	○

Selecting Accessibility Features and Accommodations for EL Students

Decisions about universal and designated features and accommodations for EL students should be made by an informal group of educators familiar with the student; the group will identify the appropriate features and accommodations for each EL student. The decisions of the informal decision-making team should be documented using either the sample form *Documentation of Accommodations for an EL Student* provided in Appendix B, or using a similar, locally designed form.

Individuals involved in the decision-making process may include any of the following:

- the student,
- the English to Speakers of Other Languages (ESOL) or Bilingual/Dual Language (BDL) educator,
- school administrator (principal/assistant principal),
- general educator (content area teacher).

- special educator (if appropriate)
- parent or guardian

Decision-making teams are encouraged to determine and assign features and accommodations to EL students as early as possible in the school year to ensure that the student is familiar with their use. The student should not be introduced to an accessibility feature or accommodation on the day of the assessment. Appropriate features and accommodations are intended to allow EL students to demonstrate their knowledge and skills more effectively.

Guidelines for Selecting Accessibility Features and Accommodations for EL Students

Because a student's level of English language proficiency is transitional, and the student's linguistic needs will differ from one year to the next, accessibility features and accommodations should be examined and revised annually as the student progresses toward proficiency in English.

Decision-Making Procedures

The following procedures can be used to make appropriate decisions regarding selection of accessibility features and accommodations for EL students:

1. While examining the range of supports allowed on tests that may help the EL student access the curriculum and take assessments more effectively, the student's classroom teacher should consider:
 - *Has a particular feature and/or accommodation been used successfully in the past to assist students in similar situations and at similar English proficiency levels?*
2. While trying out the selected supports during routine instruction to determine whether they meet the student's needs, the teacher should consider the following questions:
 - *Does the feature and/or accommodation help the student overcome the barrier posed by his or her developing English language proficiency?*
 - *Is the student comfortable using the feature or accommodation?*
3. The teacher should observe the student in the classroom (or if possible, across different classrooms and school settings) using the accessibility feature or accommodation and inform members of the decision-making team which features or accommodations seem most appropriate and effective.

Based on the accessibility feature(s) and/or accommodation(s) listed in this manual and used successfully in the classroom, the teacher can select the appropriate test supports for the student to use on the tests.

4. The teacher should document the final decisions either on the sample form provided in Appendix B, or use a similar locally designed form, and keep this form in the student's file.

Involving EL Students in Selecting and Using Accommodations

The more that an EL student is involved in the accommodation selection process, the more likely the accommodations will be accepted and used by the student. Also, as students' English proficiency increases, and especially as students reach adolescence and the desire to be more independent increases, students will help to determine when the support is no longer useful. Students are likely to increase their self-advocacy abilities over time to ensure that the selected supports are provided during testing. Teachers and other adults can play a role in assisting students to advocate on their own behalf regarding their need for and use of accessibility features and accommodations.

It is important to introduce the use of selected accessibility features and accommodations as early as possible in the school year before the tests are administered in order to familiarize students with their use and determine their effectiveness. **Do not provide accommodations for the first time during an assessment.**

Evaluating the Effectiveness of Features and Accommodations

Accessibility features and accommodations should be evaluated over time for their effectiveness. Observations conducted during test administration, interviews with test administrators, and talking with students after testing is likely to yield data that can be useful in guiding the evaluation of the use of features and accommodations at the school, district, and student levels.

The following questions can guide decision-making regarding the effectiveness of the selected accessibility features and accommodations.

- Was the student familiar with the feature or accommodation prior to testing?
- Does the student use the feature or accommodation routinely?
- Was the student comfortable using the feature or accommodation?
- Does the student's performance on the assessment improve when the feature or accommodation is used?

Table 5: Accommodations for Students with Disabilities and English Learners

Test Support Name	Test	Student Status	Support Group	Embedded Support: <i>Available accommodations embedded in the online testing platform (TestNav, TIDE, WIDA AMS, and Kite Student Portal) for the computer-based editions of tests.</i>	External or Non-Embedded Support: <i>Available accommodations for the paper-based edition of the test or if test support will be provided outside of the test platform.</i>
Able to move, stand, pace	PSAT10_SAT	IEP/504 Only	Accommodation	<i>May be provided as a non-embedded support.</i>	ABLE TO MOVE, STAND, OR PACE during assessment in a place that is not distracting to others and where others' work cannot be seen. SSD Online: Other modified setting TIDE: Set non-embedded accommodation flag to Yes.
Adaptive or Specialized Furniture	PSAT10_SAT	IEP/504 Only	Accommodation	<i>May be provided as a non-embedded support.</i>	ACCOMMODATED SEATING, SPECIAL LIGHTING, or FURNITURE. Type of seating should be specified in request. Use of alternative writing position (e.g., desk easel, student standing up). SSD Online: Other modified setting TIDE: Set non-embedded accommodation flag to Yes.
	ACCESS, DLM, NGSA, RICAS	Any Student	Accessibility Feature	ADAPTIVE OR SPECIALIZED FURNITURE. This is an accessibility feature for ACCESS, DLM, NGSA, and RICAS. See page 3 .	
Answer Masking	ACCESS, DLM, NGSA, RICAS	Any Student	Accessibility Feature	ANSWER MASKING. This is an accessibility feature for ACCESS, DLM, NGSA, and RICAS. See pages 3-4 .	
	PSAT10_SAT	IEP/504 Only	Accommodation	ANSWER MASKING. This tool blocks off content, test items, or answer options that may be distracting so the student can focus their attention on a specific part of a test item. SSD Online: Answer Masking TIDE: Answer Masking	ANSWER MASKING. Students taking the paper-edition of the test, can use a blank page to block test content, test items, or answer options that may be distracting and so focus their attention on a specific part of the test. SSD Online: Answer Masking TIDE: Masking
AT/AAC Devices	ACCESS	Any Student	Accessibility Feature	AAC DEVICES. Assistive/Augmentative Communication (AAC) devices are accessibility features for ACCESS. See page 4 .	
	DLM	IEP/504 Only	Accommodation	<i>May be provided as a non-embedded support.</i>	SINGLE-SWITCH SYSTEM. This support is activated using one switch and a switch interface that emulates the Enter key on the keyboard. In the PNP Profile, test administrators can set scan speed, indicate if scanning is to begin automatically when the page appears, and select the number of times the scan cycle repeats before stopping. See <i>testlet TIPS sheet</i> .

Test Support Name	Test	Student Status	Support Group	Embedded Support: <i>Available accommodations embedded in the online testing platform (TestNav, TIDE, WIDA AMS, and Kite Student Portal) for the computer-based editions of tests.</i>	External or Non-Embedded Support: <i>Available accommodations for the paper-based edition of the test or if test support will be provided outside of the test platform.</i>
					TWO-SWITCH SYSTEM. This system does not require activation in the PNP Profile. Two switches and a switch interface are used to emulate the Tab key to move between choices and the Enter key to select the choice when highlighted. <i>See testlet TIPS sheet.</i>
AT/AAC Devices	NGSA	IEP/504 Only	Accommodation	<i>May be provided as a non-embedded support.</i>	AT/AAC DEVICES. BigKeys, switches, adaptive mouse, etc., must have <i>Permissive Mode</i> selected in the online test system in order to function properly. NGSA TIDE: Permissive Mode
	PSAT10_SAT	IEP/504 Only	Accommodation	ASSISTIVE TECHNOLOGY. Student uses any of the following assistive technology/assistive augmentative communication (AT/AAC) device(s) to respond to test items that will be used with the computer-based (digital) test: picture/symbol communication boards, speech generating devices, switches, alternative keyboards, eye-gaze motion sensors, head or mouth pointer, specialized trackballs or mice, talking calculator. NOTE: Type of AT or AAC device should be noted in accommodations questionnaire. The type of AT/AAC device used determines if colleges and universities will accept the scores for admissions purposes. Students will receive score reports and scores will be used for state accountability purposes. SSD Online: Assistive Technology CB TIDE: AT (JAWS, NVDA, Braille Display, etc.) <i>Permissive Mode is set automatically.</i>	ASSISTIVE TECHNOLOGY. Student uses any of the following assistive technology/assistive augmentative communication (AT/AAC) device(s) to respond to test items that will be used with the paper test: picture/symbol communication boards, speech generating devices, eye-gaze motion sensors, head or mouth pointer, talking calculator, or adaptive writing tools such as a pencil grip or larger pencil. NOTE: Type of AT or AAC device should be noted in accommodations questionnaire. The type of AT/AAC device used determines if colleges and universities will accept the scores for admissions purposes. Students will receive score reports and scores will be used for state accountability purposes. SSD Online: Assistive Technology
	RICAS	IEP/504/EL Only	Accommodation	COMPATIBLE ASSISTIVE TECHNOLOGY. Assistive technology or assistive augmentative communication (AT/AAC) device or software routinely used by student that is compatible with TestNav needs to be designated in the SR/PNP to allow for external software or hardware to work within TestNav. <ul style="list-style-type: none">For information about software and hardware compatible with TestNav, see the <i>Assistive Technology Guidelines for RICAS</i>.	AT/AAC DEVICES or SOFTWARE. Assistive technology or assistive augmentative communication (AT/AAC) device or software routinely used by student that is not compatible with TestNav, such as those listed below. These may be provided as non-embedded support using an additional computer. <i>See specific accommodation for details.</i> <ul style="list-style-type: none">Spell Check device or software

Test Support Name	Test	Student Status	Support Group	Embedded Support: <i>Available accommodations embedded in the online testing platform (TestNav, TIDE, WIDA AMS, and Kite Student Portal) for the computer-based editions of tests.</i>	External or Non-Embedded Support: <i>Available accommodations for the paper-based edition of the test or if test support will be provided outside of the test platform.</i>
				RICAS PNP Column W (Compatible Assistive Technology) <i>Additional instructions in SR/PNP Guide.</i>	<ul style="list-style-type: none"> • Word prediction • Speech-to-text software For information about compatibility with TestNav, visit www.ride.ri.gov/tc .
Auditory Supports	PSAT10_SAT	IEP/504 Only	Accommodation	AMPLIFICATION. The volume of the testing device may be increased using computer controls. SSD Online: Not Recorded CB TIDE: Not Recorded	AUDITORY AMPLIFICATION/FM SYSTEM. Student uses an auditory amplification device or special sound system. SSD Online: Auditory Amplification/FM System CB TIDE: Set <i>Non-embedded accommodation</i> flag to Yes.
	ACCESS, DLM, RICAS, NGSA	Any Student	Accessibility Feature	AUDIO AIDS. <i>This is an accessibility feature for ACCESS. See page 4.</i>	
Braille Edition	ACCESS	IEP/504 Only	Accommodation	<i>May be provided as a non-embedded support.</i>	BRAILLE WITH TACTILE GRAPHICS. For students proficient in Unified English Braille (UEB) in grades 1-12. <ul style="list-style-type: none"> • Grades 6-8 uses UEB with Nemeth for math and science-related items. • Kindergarten students who are blind should be learning UEB. It is expected that WIDA will provide guidance and direction to LEAs on how to obtain a UEB edition of the kindergarten test. • For students who are not proficient in UEB or who are in the beginning stages of learning UEB, IEP Teams should consider the <i>Human Reader for Items</i> and <i>Human Reader for Response Options</i> (page 49). • Braille kits must be ordered. <i>See the WIDA Accommodations and Accessibility Features Manual, page 10, to learn how to administer a braille test.</i>

Test Support Name	Test	Student Status	Support Group	Embedded Support: Available accommodations embedded in the online testing platform (TestNav, TIDE, WIDA AMS, and Kite Student Portal) for the computer-based editions of tests.	External or Non-Embedded Support: Available accommodations for the paper-based edition of the test or if test support will be provided outside of the test platform.
Bilingual Word-to-Word Dictionary or Glossary	All Tests	EL Only	Accommodation for EL Students	BILINGUAL WORD-TO-WORD DICTIONARY OR GLOSSARY. Current or former EL student requires a Translation Glossary and/or word-to-word dictionary. <ul style="list-style-type: none"> Bilingual dictionary use is strictly limited to those that provide word-to-word translations. Dictionaries that include definitions, synonyms, antonyms, phrases, and other information are prohibited. Word-to-word dictionaries and glossaries cannot be electronic or internet-based (Google Translate, for example). To discuss the approval of a word-to-word dictionary or glossary not included in the list, contact the Assessment Office at assessment@ride.ri.gov. Visit the accommodations web page for test-specific lists of approved word-to-word dictionaries and glossaries. 	
	NGSA			<i>May be provided as a non-embedded support.</i>	BILINGUAL WORD-TO-WORD DICTIONARY NGSA TIDE: Bilingual Word-to-Word Dictionary
	PSAT10_SAT			<i>May be provided as a non-embedded support.</i>	APPROVED WORD-TO-WORD BILINGUAL DICTIONARY. SSD Online: Not Recorded CB TIDE: Set <i>Non-embedded accommodation</i> and EL flags to Yes.
	RICAS			<i>May be provided as a non-embedded support.</i>	APPROVED WORD-TO-WORD DICTIONARY AND GLOSSARY. RICAS PNP Column AS (Approved Bilingual Word-to-Word Dictionary and Glossary)
Braille Edition	DLM	IEP/504 Only	Accommodation	BRAILLE. Braille forms are available for some Essential Elements at the upper linkage levels. These forms are available in either uncontracted Unified English Braille (UEB) or English Braille American Edition (EBAE), depending on what the test administrator selects in the student's PNP Profile. DLM braille forms also include Nemeth code for mathematics, as needed. Braille testlets are for students who read braille proficiently. Do not select braille for emerging braille readers. When a braille-ready file is available, BRF will be indicated as part of the testlet naming convention: SP BRF SCI MS.PS1-2 T 10455. Since braille forms are not available for every Essential Element at every linkage level, the DLM consortium recommends also selecting Alternate For-Visual Impairment.	<i>Category 3 Support: Entered into PNP Profile but provided externally to the Kite Student Portal system. See individual testlet TIPS sheets for more information.</i>

Test Support Name	Test	Student Status	Support Group	Embedded Support: Available accommodations embedded in the online testing platform (TestNav, TIDE, WIDA AMS, and Kite Student Portal) for the computer-based editions of tests.	External or Non-Embedded Support: Available accommodations for the paper-based edition of the test or if test support will be provided outside of the test platform.
				See testlet TIP sheets for more information. DLM PNP Profile: Uncontracted Braille (check UEB) ALTERNATE FORM - VISUAL IMPAIRMENT. See Magnification.	
Braille Edition	NGSA	IEP/504 Only	Accommodation	REFRESHABLE BRAILLE. Refreshable Braille in UEB with Nemeth is available. Tactile graphics for items can be printed using Print On Demand and an embosser or braille printer. NGSA TIDE: Braille Type: UEB Uncontracted with Nemeth Math or UEB Contracted with Nemeth Math and Presentation is Braille Edition	BRAILLE EDITION. A paper edition in UEB with Nemeth is available. Both contracted and uncontracted braille are available. NGSA TIDE: Braille Type: UEB Uncontracted with Nemeth Math or UEB Contracted with Nemeth Math and Presentation is Braille Edition
	PSAT10_SAT	IEP/504 Only	Accommodation	ASSISTIVE TECHNOLOGY. Student uses compatible screen reader (JAWS, NVDA, Braille Display, etc.) or refreshable braille device with paper-based supplements. All braille assessments are in UEB (including math). Materials: Contact College Board at rischoolday@collegeboard.org to order the Braille Figure Supplement and Raised Line Drawings SSD Online: Braille with raised line drawings, contracted CB TIDE: AT (JAWS, NVDA, Braille Display, etc.)	BRAILLE WITH RAISED LINE DRAWINGS, CONTRACTED. Student uses paper edition of braille. All braille assessments are in UEB. Contact the College Board at mailto:rischoolday@collegeboard.org to order paper braille materials. SSD Online: Braille with raised line drawings, contracted
	RICAS	IEP/504 Only	Accommodation	REFRESHABLE BRAILLE. Refreshable Braille in UEB is available. Order a paper edition of Braille for tactile graphics. Use a braille reader in conjunction with a screen reader. RICAS PNP Column V (Screen Reader) <i>Additional instructions in SR/PNP Guide.</i>	BRAILLE TEST EDITION. Student uses a hard-copy UEB Braille test that includes both text and graphics. RICAS PNP Column X (Braille Test Edition) <i>Additional instructions in SR/PNP Guide.</i>
Braille Writer	DLM	IEP/504 Only	Accommodation	<i>May be provided as a non-embedded support.</i>	BRAILLE WRITER. Student can use a braille writer for note-taking or to respond to test questions. All student responses must be transcribed by the student or a qualified test administrator into the Kite Student Portal. DLM PNP Profile: Not Recorded

Test Support Name	Test	Student Status	Support Group	Embedded Support: <i>Available accommodations embedded in the online testing platform (TestNav, TIDE, WIDA AMS, and Kite Student Portal) for the computer-based editions of tests.</i>	External or Non-Embedded Support: <i>Available accommodations for the paper-based edition of the test or if test support will be provided outside of the test platform.</i>
Braille Writer	NGSA	IEP/504 Only	Accommodation	BRaille WRITER. Braille writer can be used in conjunction with a screen reader for the online test. TIDE: Braille	BRaille WRITER. Student can use a braille writer for note-taking or to respond to test questions. All student responses must be transcribed by the student or a qualified test administrator into the Test Delivery System. NGSA TIDE: Braille
	PSAT10_SAT	IEP/504 Only	Accommodation	BRaille WRITER. A braille writer can be used in conjunction with a screen reader. SSD Online: Braille Writer CB TIDE: AT (JAWS, NVDA, Braille Display, etc.)	BRaille WRITER. Use of Braille writer or electronic Braille writer for Reading and writing with the following features disabled: spell check, thesaurus, grammar check. SSD Online: Braille Writer
	RICAS	IEP/504 Only	Accommodation	BRaille WRITER. A braille writer can be used in conjunction with a screen reader for the online test. RICAS PNP Column V (Screen Reader)	BRaille WRITER. Student can use a braille writer for note-taking or to respond to test questions. All student responses must be transcribed by the student or a qualified test administrator into a regular student answer booklet. RICAS PNP Column: <i>Not Recorded</i>
Breaks	PSAT10_SAT	IEP/504 Only	Accommodation	<i>May be provided as a non-embedded support.</i>	The following options are available: <ul style="list-style-type: none"> • BREAKS: EXTRA • BREAKS: EXTENDED • BREAKS: AS NEEDED SSD Online: <i>Use the list above to enter exact break accommodation.</i> TIDE: <i>Use the list above to enter exact break accommodation.</i> PERMISSION TO TEST BLOOD SUGAR accommodation for students will need to do that during testing. SSD Online: Permission to test blood sugar TIDE: <i>Set non-embedded accommodation flag to Yes.</i> PERMISSION FOR FOOD/MEDICATION for students who will need breaks in order to eat or take medications outside of scheduled breaks. SSD Online: Permission to test blood sugar or Permission for Food/Medication TIDE: <i>Set non-embedded accommodation flag to Yes.</i>

Test Support Name	Test	Student Status	Support Group	Embedded Support: <i>Available accommodations embedded in the online testing platform (TestNav, TIDE, WIDA AMS, and Kite Student Portal) for the computer-based editions of tests.</i>	External or Non-Embedded Support: <i>Available accommodations for the paper-based edition of the test or if test support will be provided outside of the test platform.</i>
					<p>LIMITED TIME TESTING. This accommodation allows the test to be broken up differently rather than using the typical breaks in a standard administration. This accommodation is similar to <i>Test Over Multiple Days</i>, but in this case, the testing time is reduced for each test session.</p> <p>SSD Online: Limited Time Testing</p>
	ACCESS, DLM, RICAS, NGSA	Any Student	Accessibility Feature	BREAKS. Breaks are an accessibility feature for ACCESS, DLM, RICAS, and NGSA.	
Calculators or Mathematics Tools	DLM	IEP/504 Only	Accommodation	<i>May be provided as a non-embedded support.</i>	<p>CALCULATOR. Students may use a calculator on mathematics test unless the TIP sheet says otherwise.</p> <p>PNP Profile: Calculator</p> <p>INDIVIDUALIZED MANIPULATIVES. Students may use familiar manipulatives (e.g., abacus, unit cubes, interlocking blocks, counters, linking letters). See TIPS for more information.</p> <p>DLM PNP Profile: Individualized Manipulatives</p>
	NGSA	Any Student	Accessibility Feature	CALCULATORS OR MATHEMATICS TOOLS. Calculators or other mathematics tools are an accessibility feature for NGSA.	
	PSAT10_SAT	IEP/504 Only	Accommodation	<p>4-FUNCTION CALCULATOR. Allows student to use the embedded Desmos four-function calculator on the Math Test - No Calculator section. Students may also use a hand-held calculator. A list of allowable calculators is available in the <i>RI Test Coordinator Handbook</i> at www.ride.ri.gov/tc.</p> <p>SSD Online: Use of four-function calculator</p> <p>CB TIDE: Four-function Calculator</p>	<p>4-FUNCTION CALCULATOR. Student uses a four-function calculator on the non-calculator section of the math test. A list of allowable calculators is available in the RI Test Coordinator Handbook at www.ride.ri.gov/tc.</p> <p>SSD Online: 4-function calculator</p> <p>TIDE: Set <i>non-embedded accommodation flag</i> to Yes.</p> <p>MATHEMATICS TOOLS. Use of arithmetic tables for addition, subtraction, multiplication, and division, including an abacus. Formulas may not be included.</p> <p>SSD Online: Use of four-function calculator</p> <p>CB TIDE: Set <i>non-embedded accommodation flag</i> to Yes.</p>

Calculators or Mathematics Tools	RICAS	IEP/504 Only	Special Access Accommodation	<p>CALCULATOR OR OTHER MATHEMATICS TOOLS ON THE NON-CALCULATOR SECTION OF THE MATH TEST.* Student uses a calculation device or other mathematics tool on the non-calculator session of the RICAS mathematics test. See criteria in the next column to ensure that the student meets all of the criteria before assigning this accommodation.</p> <p>EMBEDDED CALCULATOR TOOL. The student uses the embedded calculator tool in TestNav during the non-calculator section of the math test.</p> <p>PNP Column: AL (Calculation Device on non-calculator test session)</p> <p>HAND-HELD CALCULATOR. <i>See next column for information on providing a hand-held calculator for the non-calculator section of the math test. See Appendix M of this manual for a list of allowable calculators for RICAS math tests.</i></p> <p>PNP Column AL (Calculation Device on non-calculator test session)</p> <p>OTHER MATHEMATICS TOOLS*. A student may require other mathematics tools instead of, or in addition to, a calculator such as arithmetic tables (addition, subtraction, multiplication or division tables) or other manipulatives during the non-calculator section of the RICAS math tests. <i>See next column for information on providing other mathematics tools on the non-calculator section of the math test.</i></p> <p>RICAS PNP Column AL (Calculation Device on non-calculator test session)</p> <hr/> <p><i>*This accommodation does not include Supplemental Reference Sheets. See Appendix M for guidance on selecting the right accommodation for your student.</i></p>	<p>CALCULATOR OR OTHER MATHEMATICS TOOLS ON THE NON-CALCULATOR SECTION OF THE MATH TEST.*</p> <p>Student uses a calculation device or other mathematics tool (e.g., addition/subtraction or multiplication/division tables; or manipulatives) on the non-calculator session of the RICAS mathematics test.</p> <p>Criteria: This accommodation is intended for a small number of students with documented disabilities that severely limit or prevent them from performing basic calculations without a calculation device or other mathematics tool, as documented in locally administered diagnostic evaluations, even after varied and repeated attempts to teach the student to do so. The student must meet all of the following criteria:</p> <ul style="list-style-type: none"> • The student is virtually unable to calculate (i.e., unable to perform single-digit addition, subtraction, multiplication, or division without a calculation device or other mathematics tool); and • The student uses the calculation device or tool during daily, routine instruction in mathematics courses and other courses requiring mathematics (science, for example); and • The student receives ongoing instruction to learn the skill. <p>NOTES:</p> <ul style="list-style-type: none"> • The student's IEP or 504 plan must specify the type(s) of calculation device or tool. <i>See Appendix M of this manual for a list of allowable calculators for RICAS math tests.</i> • <i>Calculators are allowed for all students on the designated calculator sessions of the mathematics test. The embedded calculator is available in TestNav but a student can use a hand-held calculator if they prefer.</i> • Schools must provide a calculator to students receiving this accommodation for the non-calculator session. • Students who meet these criteria should use a completed arithmetic table (addition, subtraction, multiplication, or division, as necessary). • Students who do not meet these criteria may benefit
-----------------------------------------	-------	--------------	------------------------------	------------------------------------------------------------------------------------------------------------------------------------------------------------------------------------------------------------------------------------------------------------------------------------------------------------------------------------------------------------------------------------------------------------------------------------------------------------------------------------------------------------------------------------------------------------------------------------------------------------------------------------------------------------------------------------------------------------------------------------------------------------------------------------------------------------------------------------------------------------------------------------------------------------------------------------------------------------------------------------------------------------------------------------------------------------------------------------------------------------------------------------------------------------------------------------------------------------------------------------------------------------------------------------------------------------------------------------------------------------------------------------------------------------------------------------------------------------------------------------------------------------------------------------------------------------------------------------------------------------------------	--------------------------------------------------------------------------------------------------------------------------------------------------------------------------------------------------------------------------------------------------------------------------------------------------------------------------------------------------------------------------------------------------------------------------------------------------------------------------------------------------------------------------------------------------------------------------------------------------------------------------------------------------------------------------------------------------------------------------------------------------------------------------------------------------------------------------------------------------------------------------------------------------------------------------------------------------------------------------------------------------------------------------------------------------------------------------------------------------------------------------------------------------------------------------------------------------------------------------------------------------------------------------------------------------------------------------------------------------------------------------------------------------------------------------------------------------------------------------------------------------------------------------------------------------------------------------------------------------------------------------------------------------------------------------------------------------------------------------------------------------------------------------------------------------------------------------------------------------------------------------------------------------------------------------------------------------------------------------------------------------------------------------------------------------------------------------------------------------------------------------------------------

Test Support Name	Test	Student Status	Support Group	Embedded Support: <i>Available accommodations embedded in the online testing platform (TestNav, TIDE, WIDA AMS, and Kite Student Portal) for the computer-based editions of tests.</i>	External or Non-Embedded Support: <i>Available accommodations for the paper-based edition of the test or if test support will be provided outside of the test platform.</i>
					from a blank multiplication table as a possible alternative. For information on how to select the best accommodation for your student, see Appendix M RICAS PNP Column AL (Calculation device on non-calculator test session)
Calculators or Mathematics Tools	RICAS	IEP/504 Only	Accommodation	<i>May be provided as a non-embedded support.</i>	<p>SUPPLEMENTAL REFERENCE SHEET FOR MATH TEST. For students who have a disability that affects their ability to remember formulas or other basic mathematical concepts, a Supplemental Reference Sheet may be helpful (<i>see Appendix M for guidance on selecting the best math accommodation for your student</i>). Follow these guidelines:</p> <ul style="list-style-type: none"> • This is an accommodation for students with a disability that affects their ability to apply their mathematical knowledge and skills. Do not assign this accommodation to any student with a disability because the teacher uses the supplemental reference sheet with all their students. • Provide the Supplemental Reference Sheet for calculator <i>and</i> non-calculator sessions of the math test along with the standard reference sheet. • Remove any unnecessary information on the supplemental reference sheet that the student doesn't need. Do not add new information. • The blank multiplication table may not be completed by anyone other than the student. Once the student completes the multiplication table, they can use the same multiplication table for each day of testing. They do not need to complete a new table each day. • Download supplemental reference sheets from www.ride.ri.gov/accommodation (click on RICAS). <p>RICAS PNP Column AP (Graphic Organizer/Reference Sheet)</p>

Test Support Name	Test	Student Status	Support Group	Embedded Support: <i>Available accommodations embedded in the online testing platform (TestNav, TIDE, WIDA AMS, and Kite Student Portal) for the computer-based editions of tests.</i>	External or Non-Embedded Support: <i>Available accommodations for the paper-based edition of the test or if test support will be provided outside of the test platform.</i>
Color Contrast	DLM	IEP/504 Only	Accommodation	<p>OVERLAY COLOR: The background color of the assessment. The default color is white. Test administrators may select from the alternate colors of blue, green, pink, gray, and yellow. Practice demo testlets have specific presets, but more options are provided in the PNP Profile.</p> <p>INVERT COLOR CHOICE: Makes the background color black and the font white. Images display with a white background.</p> <p>CONTRAST COLOR: Allows test administrators to choose color schemes for the background and font. Screenshots showing these supports begin in the <i>Demonstration of Personal Needs and Preferences Supports: What Students Will See</i> section of the <i>DLM Accessibility Manual</i>.</p> <p>DLM PNP Profile: Overlay color, invert color choice, or contrast color</p>	<i>The DLM alternate assessments are highly individualized for each student depending on their abilities and challenges. Additional supports can be used in combination with embedded supports. These additional supports can be found in each testlet's Test Information Page (TIP) sheet.</i>
	ACCESS, NGSA, RICAS	Any Student	Accessibility Feature	COLOR CONTRAST/COLOR OVERLAY. <i>These are accessibility features for ACCESS, NGSA, and RICAS tests.</i>	
	PSAT10_SAT	IEP/504 Only	Accommodation	<p>COLOR CONTRAST. The following text and background combinations are available in TIDE:</p> <ul style="list-style-type: none"> • black text on white background (default) • black text on cream background • gray text on light gray background • medium gray on light gray background • white text on navy blue background • yellow text on blue background • reverse contrast (white text on black background) <p>SSD Online: Color Overlay CB TIDE: Color Contrast</p>	<p>COLOR OVERLAY. Students can use a color overlay of their choice.</p> <p>SSD Online: Color Overlay CB TIDE: <i>Set non-embedded accommodation flag to Yes.</i></p>
Computer: Writing Section	PSAT10_SAT	IEP/504 Only	Accommodation	<p>COMPUTER (WORD PROCESSOR ONLY FOR ESSAYS ONLY)</p> <p>PSAT 10: N/A. <i>The PSAT 10 does not include an essay or constructed response items.</i></p> <p>(UPDATE 2022) SAT: N/A. <i>Beginning in April 2022, the essay will no longer be part of the SAT state assessment administration.</i></p>	

Test Support Name	Test	Student Status	Support Group	Embedded Support: <i>Available accommodations embedded in the online testing platform (TestNav, TIDE, WIDA AMS, and Kite Student Portal) for the computer-based editions of tests.</i>	External or Non-Embedded Support: <i>Available accommodations for the paper-based edition of the test or if test support will be provided outside of the test platform.</i>
Concentration Aids	PSAT10_SAT	IEP/504 Only	Accommodation	<i>May be provided as a non-embedded support.</i>	CONCENTRATION AIDS. (E.g., stress balls, T-stools, background music, etc.). Type of aid should be specified in request. SSD Online: Other CB TIDE: <i>Non-embedded accommodation flag set to Yes</i>
Emergency Accommodation	ACCESS DLM RICAS NGSA PSAT10_SAT	Any Student	Accommodation	<p>EMERGENCY ACCOMMODATION. An emergency accommodation is appropriate in cases where a student needs a new accommodation immediately prior to the assessment due to unforeseen circumstances. Cases could include students who have a recently fractured limb (e.g., fingers, hand, arm, wrist, or shoulder); whose only pair of eyeglasses has broken; or a student returning from a serious or prolonged illness or injury.</p> <p><i>If a student's IEP is missing an accommodation, follow the IEP amendment process for adding the accommodation to the student's IEP or 504 Plan.</i></p> <p>Common emergency accommodations:</p> <ul style="list-style-type: none"> • Text-to-speech or human read aloud • Speech-to-text or scribe • Magnification or large print paper edition <p>Administration Considerations:</p> <ul style="list-style-type: none"> • Make sure the student is comfortable using the accommodation <i>before</i> testing. If the student is not comfortable using the suggested emergency accommodation, please find a suitable alternative. • Complete the Emergency Accommodation Form in Appendix E. You can also download this form at www.ride.ri.gov/accommodations. 	<p>SUPPORTS FOR STUDENTS WITH TEMPORARY PHYSICAL/MEDICAL CONDITIONS. For students with temporary impairments (caused by injury, accident, etc.) who cannot take the test on another day (including the make-up day). Directions and the form for completing a request for a temporary accommodation for PSAT 10 or SAT, visit www.ride.ri.gov/accommodations.</p>
Extended Time	ACCESS	IEP/504 Only	<i>Accessibility Feature</i> <hr/> Accommodation	<p>EXTENDED TIME during regular test sessions is an accessibility feature. See page 11 in the <i>WIDA Accessibility and Accommodations Manual</i> for more information.</p> <hr/> <p><i>May be provided as a non-embedded support</i></p>	<p>EXTENDED TIME OF A TEST DOMAIN OVER MULTIPLE DAYS (EM). In rare cases, and only when absolutely necessary, due to an illness, disability, or extended interruption in testing, with the approval of a state assessment official, students may extend the testing session over multiple days.</p>

Test Support Name	Test	Student Status	Support Group	Embedded Support: <i>Available accommodations embedded in the online testing platform (TestNav, TIDE, WIDA AMS, and Kite Student Portal) for the computer-based editions of tests.</i>	External or Non-Embedded Support: <i>Available accommodations for the paper-based edition of the test or if test support will be provided outside of the test platform.</i>
			Accommodation	<i>May be provided as a non-embedded support</i>	EXTENDED SPEAKING TEST RESPONSE TIME (ES). (speaking domain only). Intended to support students with cognitive, language processing, physical, or communication disabilities who need additional processing time for spoken language. The purpose of this accommodation is to allow time for cognitive processing or motor planning for speaking. Student is allowed twice the allowable time to respond on test items. For online testing, this accommodation must be selected in the WIDA AMS prior to the student beginning testing. See page 11 in the <i>WIDA Accessibility and Accommodations Manual</i> for more information.
	DLM, RICAS, NGSA	Any Student	Accessibility Feature	EXTENDED TIME. This is an accessibility feature for DLM, RICAS, and NGSA.	
Extended Time	PSAT10_SAT	IEP/504/EL Only	Accommodation	EXTENDED TIME. Students receiving extended time on reading must receive extended time on all sections of the test. Self-pacing is not allowed; students must sit for the entire duration of extended time requested so please be sure to discuss this with students before requesting it in SSD Online. Based on student need, breaks might provide the required support. Complete the Accommodations Questionnaire (www.ride.ri.gov/accommodations) and submit to College Board.	
				EXTENDED TIME OPTIONS FOR STUDENTS WITH DISABILITIES SSD Online and TIDE: <ul style="list-style-type: none"> • Reading: Time and one-half (+50%) • Reading: Double time (+100%) • Reading: More than double time (>+100%) • Writing (Essays/free response): <i>The April 2022 state assessment administration of the SAT will not include the essay. The PSAT 10 does not include an essay.</i> • Math: Time and one-half (+50%) • Math: Double time (+100%) • Math: More than double time (>+100%) 	EXTENDED TIME OPTIONS FOR STUDENTS WITH DISABILITIES SSD Online: <ul style="list-style-type: none"> • Reading: Time and one-half (+50%) • Reading: Double time (+100%) • Reading: More than double time (>+100%) • Writing (Essays/free response): <i>The April 2022 state assessment administration of the SAT will not include the essay. The PSAT 10 does not include an essay.</i> • Math: Time and one-half (+50%) • Math: Double time (+100%) • Math: More than double time (>+100%)
				EXTENDED TIME OPTIONS FOR ENGLISH LEARNERS - ENGLISH LEARNER SUPPORT –	EXTENDED TIME OPTIONS FOR ENGLISH LEARNERS - ENGLISH LEARNER SUPPORT –

Test Support Name	Test	Student Status	Support Group	Embedded Support: Available accommodations embedded in the online testing platform (TestNav, TIDE, WIDA AMS, and Kite Student Portal) for the computer-based editions of tests.	External or Non-Embedded Support: Available accommodations for the paper-based edition of the test or if test support will be provided outside of the test platform.
				<ul style="list-style-type: none"> Time and one-half (+50%). Any current or former EL student may have 50% extended time for testing, if necessary. SSD Online: EL - Time and one-half (+50%) CB TIDE: Set EL flag and time for each test section	<ul style="list-style-type: none"> Time and one-half (+50%). Any current or former EL student may have 50% extended time for testing, if necessary. SSD Online: English Learner Support - 50% Extended Time
Graphic Organizer	RICAS	IEP/504 Only	Accommodation	May be provided as a non-embedded support.	<p>GRAPHIC ORGANIZER FOR ELA. This is an accommodation for students with a disability that affects their ability to organize their writing. This is not an accommodation for any student with a disability because the teacher uses graphic organizers as part of their routine instruction.</p> <p>Use these guidelines for providing the RIDE-approved graphic organizers for ELA: can be used for the computer- and paper-based tests using these guidelines:</p> <ul style="list-style-type: none"> Remove unnecessary information. Do not add text to any approved graphic organizer. No more than two different graphic organizers can be used per ELA session. Download graphic organizers from www.ride.ri.gov/accommodations (click RICAS tab). Other graphic organizers may be used. <i>If you have questions about a graphic organizer that a student uses, please email the graphic organizer to heather.heineke@ride.ri.gov for review.</i> <i>For students without disabilities:</i> Provide blank paper for student to draw their preferred graphic organizer. RICAS PNP Column AP (Graphic Organizer/Reference Sheet)
Magnification, Large Print Edition	ACCESS	IEP/504 Only	Accommodation	MAGNIFICATION. This is an accessibility feature. See page 9 of this manual for information on magnification options.	<p>LARGE PRINT. Large print version is 18-point font on 11x17 paper. Large print test kits must be ordered. Kits contain a large print test booklet, test booklet for transcription, test administrator script, and CD of audio files.</p> <p>TRANSCRIPTION. Student answers must be transcribed verbatim into a scannable test book and returned to DRC</p>

Test Support Name	Test	Student Status	Support Group	Embedded Support: <i>Available accommodations embedded in the online testing platform (TestNav, TIDE, WIDA AMS, and Kite Student Portal) for the computer-based editions of tests.</i>	External or Non-Embedded Support: <i>Available accommodations for the paper-based edition of the test or if test support will be provided outside of the test platform.</i>
					<p>for scoring. Student work and/or answers that are not transcribed will not be scored.</p> <p>See Appendix B, page 24, in the <i>WIDA Accessibility and Accommodations Manual</i> for transcription guidance.</p>
	DLM	IEP/504 Only	Accommodation	<p>ALTERNATE FORM - VISUAL IMPAIRMENT. For a student who is blind and does not read braille or who has a significant visual impairment.</p> <p>Braille versions are not available for every testlet. The accompanying Testlet Information Page (TIP) for that testlet will provide information about how to make appropriate adaptations for the student if a braille version is not available.</p> <p>PNP Profile: Alternate Form - Visual Impairment</p> <p>MAGNIFICATION. Allows test administrators to choose the degree of screen magnification during assessment. Test administrators can choose between a magnification of 2x, 3x, 4x, or 5x. Without magnification, the font is Report School, 22 point.</p> <p>Scrolling may be required when the level of magnification is increased because the entire item will no longer be visible on the screen. Scrolling will vary according to the level of magnification, the amount of content in the item, and the size of the screen.</p> <p>See the <i>What Students Will Experience</i> section beginning on page 30 of the DLM Accessibility Manual.</p> <p>DLM PNP Profile: Magnification</p>	<p>LARGE PRINT EDITION. Paper tests are not available for the DLM assessments. The DLM assessments are highly individualized for each student depending on their abilities and challenges and it is not expected that a student would take the test independently and without any assistance from the test administrator.</p>
Magnification, Large Print Edition	PSAT10_SAT	IEP/504 Only	Accommodation	<p>ZOOM or MAGNIFIER TOOL. Increases the font size displayed on the screen. Sizes are:</p> <ul style="list-style-type: none"> • Level 1 - 24 point (default) • Level 2 - 31 point • Level 3 - 41 point • Level 4 - 51 point • Level 6 - 172 point • Level 7 - 229 point • Level 9 - 340 point 	<p>LARGE PRINT TEST BOOK. Student with a visual impairment uses large print edition of the test booklet.</p> <p>SSD Online options are:</p> <ul style="list-style-type: none"> • LARGE PRINT TEST BOOK - 14 POINT • LARGE PRINT TEST BOOK - 20 POINT • LARGE PRINT TEST BOOK - OTHER* <p>*Use OTHER for font sizes greater than 20 points.</p> <p>Materials: order materials from College Board at rischoolday@collegeboard.org.</p> <p>LARGE PRINT (LARGE BLOCK) ANSWER SHEET</p>

Test Support Name	Test	Student Status	Support Group	Embedded Support: <i>Available accommodations embedded in the online testing platform (TestNav, TIDE, WIDA AMS, and Kite Student Portal) for the computer-based editions of tests.</i>	External or Non-Embedded Support: <i>Available accommodations for the paper-based edition of the test or if test support will be provided outside of the test platform.</i>
				SSD Online: Magnification Device (electronic) CB TIDE: Levels 1-4 do not need to be set in TIDE. Set through the Universal Tool in the online test system. Levels 5-9 need to be set in TIDE.	WRITER/SCRIBE TO RECORD RESPONSES MAGNIFICATION DEVICE. Student uses a device to magnify the assessment using one of these options: MAGNIFICATION DEVICE (ELECTRONIC). E.g., closed circuit television, magnification devices). Devices cannot be connected to internet or be able to record images. SSD Online: Magnification Device (electronic) MAGNIFICATION DEVICE (NON-ELECTRONIC). E.g., closed circuit television, magnification devices). SSD Online: Magnification Device (non-electronic)
Magnification, Large Print Edition	RICAS	IEP/504 Only	Accessibility Feature/ Accommodation	MAGNIFIER TOOL (<i>Accessibility Feature</i>). This tool enlarges part of the screen; Zoom tool enlarges or reduces entire screen by pressing Ctrl - or Ctrl +. PNP: Not Recorded	LARGE-PRINT EDITION (<i>Accommodation</i>). <i>For large-print Spanish edition, see Spanish Edition for Mathematics.</i> Students may either use the large-print booklet to respond to test questions, in which case the student's answers will need to be transcribed by the test administrator (anytime during the test window) into the standard answer booklet, OR the student may write answers directly in the standard answer booklet. Indicate in the student's IEP/504 how they will record their answers. <ul style="list-style-type: none"> • 18-point font size on 11x17 paper. • Transcribe all responses from the large-print booklet to the student's standard answer booklet and return according to instructions in the Test Coordinator Manual. • Special instructions will accompany the large-print test. RICAS PNP Column U (Large-Print Edition) LARGE PRINT PAPER-BASED EDITION IN SPANISH (MATH ONLY) (<i>Accommodation for an EL student with a disability</i>). An EL student with a visual impairment may benefit from a large print paper-based edition in Spanish. In addition to having an IEP/504 Plan demonstrating a visual disability, the EL student must meet one of these criteria:

Test Support Name	Test	Student Status	Support Group	Embedded Support: Available accommodations embedded in the online testing platform (TestNav, TIDE, WIDA AMS, and Kite Student Portal) for the computer-based editions of tests.	External or Non-Embedded Support: Available accommodations for the paper-based edition of the test or if test support will be provided outside of the test platform.
					<ul style="list-style-type: none"> • has a low level of English proficiency, • is currently receiving or has received math instruction in Spanish, or • has little or no familiarity with technology. NOTES: <ul style="list-style-type: none"> • 18-point font size on 11x17-inch paper. • English versions of test items are not included in the Spanish test. • Students may respond in either Spanish or English • Transcribe all student responses verbatim into the student’s standard answer booklet. • Instructions are included with the large print test. RICAS PNP Columns AR (Spanish Edition) and U (Large Print) EXTERNAL MAGNIFICATION DEVICE. External devices such as Smart Boards, CCTV, or hand-held magnification device to enlarge the computer display or paper test. RICAS PNP Column: Not Recorded
Magnification Large-Print Edition	NGSA	Any Student	Accessibility Feature	ZOOM or MAGNIFIER TOOL. <i>This is an accessibility feature for the science test.</i>	LARGE PRINT EDITION. The large print edition of the NGSA test is 18-point font on 11x17-inch paper. Students record their answers in the large print answer booklet. Order all paper test editions through the NGSA TIDE. Transcribe all responses from the large-print answer booklet into the Data Entry Interface (DEI). All student responses must be entered into the DEI or they will not be scored. See Appendix C: Instructions for Paper Tests in the NGSA Test Coordinator Manual (www.ride.ri.gov/tc). NGSA TIDE: Non-embedded accommodation; Large-Print Edition SPANISH TESTS: Large print paper editions are not available for the Spanish version of the science test. Set the Zoom or Magnifier Tool to the proper size and use the <i>Print On Demand</i> feature to print test items. All responses must be transcribed into the Data Entry Interface (DEI) to be scored using the instructions in

Test Support Name	Test	Student Status	Support Group	Embedded Support: <i>Available accommodations embedded in the online testing platform (TestNav, TIDE, WIDA AMS, and Kite Student Portal) for the computer-based editions of tests.</i>	External or Non-Embedded Support: <i>Available accommodations for the paper-based edition of the test or if test support will be provided outside of the test platform.</i>
					<p>Appendix C: Instructions for Paper Tests in the NGSA Test Coordinator Manual (www.ride.ri.gov/tc).</p> <p>NGSA TIDE (Spanish Tests):</p> <ul style="list-style-type: none"> • Magnification (<i>select the magnification size</i>) and Streamline Mode (settings from 5x to 20x). • Magnification (<i>select magnification size</i>) and Print-on-Demand <p>MAGNIFICATION DEVICE. Student uses a device to magnify the assessment using one of these options:</p> <ul style="list-style-type: none"> • ELECTRONIC. Examples include closed circuit television, magnification devices. Devices cannot be connected to internet or be able to record images. • NON-ELECTRONIC. Hand-held magnification devices. <p>NGSA TIDE: Not Recorded</p>
Mathematics Only	DLM RICAS NGSA PSAT10_SAT	EL Only	Accommodation for EL Students	<p>TESTING FIRST-YEAR EL STUDENTS. Students enrolled in a U.S. school anywhere in the United States on or after April 1, 2021 are considered first year EL students. During their first year in the U.S., EL students are <i>required to take the mathematics and science tests</i> included in the state assessment program; they are exempt from participating in the reading/ELA state assessments.</p> <p>ELA: An EL student may wish to take the ELA portion of the state assessments. First-year EL students who take the ELA portion of a state assessments will receive scores; however, the ELA scores will not be used for accountability or assessment reporting activities. Please discuss the option of taking the ELA portion of the tests with students and families. This is especially important for students taking the SAT as colleges and universities will not accept incomplete scores.</p> <p>First year EL students are students who have not attended U.S. school for a cumulative number of 12 months.</p>	
	PSAT10_SAT	EL Only	Accommodation for EL Students	<p>EL SUPPORT - MATHEMATICS ONLY.</p> <ul style="list-style-type: none"> • Scores are not college-reportable and will be used for state accountability and reporting activities. • There is no Spanish edition of the mathematics test available for the SAT or PSAT 10. 	
				<p>Test administrators administering the mathematics only computer-based test will receive instructions for setting up TIDE. These instructions will also be posted at www.ride.ri.gov/accommodations.</p>	<p>EL SUPPORT - MATHEMATICS ONLY.</p> <p>Paper math-only test booklets cannot be ordered. Proctors will administer only the math portion of the test in the standard test booklet. All paper test materials must be ordered by contacting College Board at rischoolday@collegeboard.org</p> <p>SSD Online: EL-Math Only</p>

Test Support Name	Test	Student Status	Support Group	Embedded Support: <i>Available accommodations embedded in the online testing platform (TestNav, TIDE, WIDA AMS, and Kite Student Portal) for the computer-based editions of tests.</i>	External or Non-Embedded Support: <i>Available accommodations for the paper-based edition of the test or if test support will be provided outside of the test platform.</i>
Monitor placement of responses	ACCESS	IEP/504 Only	Accommodation	<i>May be provided as a non-embedded support.</i>	CB TIDE: Set non-embedded accommodation flag to Yes.
	NGSA	IEP/504 Only	Accommodation	<i>May be provided as a non-embedded support.</i>	NGSA TIDE: Not Recorded
	PSAT10_SAT	IEP/504 Only	Accommodation	<i>May be provided as a non-embedded support.</i>	SSD Online: Other CB TIDE: Set non-embedded accommodation flag to Yes.
	RICAS	IEP/504 Only	Accommodation	<i>Available only for paper editions of the test.</i>	TRACK TEST ITEMS. The test administrator may help the student move from one test item to the next so as to not skip items. The test administrator may not help the student answer test items or provide hints. RICAS PNP Column: Not Recorded
Mouse Pointer	PSAT10_SAT	IEP/504 Only	Accommodation	MOUSE POINTER. The mouse pointer can be magnified and the color can be changed for students with visual impairments or those who are using a color contrast option. Select the degree of magnification and color of prior to testing. Size Options: The following color options are available in the default size, large, and extra-large: black, green, red, white, yellow. CB TIDE: Mouse Pointer SSD Online: Other	N/A
Notepad or Scratch Paper	PSAT10_SAT	IEP/504 Only	Accommodation	SCRATCH PAPER (accessibility feature). Everyone taking the computer-based test will receive scratch paper as part of the general administration.	SCRATCH PAPER (accommodation). Use of additional blank paper. Lined and graph paper are not allowed and will invalidate test scores. Scores will be used for state assessment

Test Support Name	Test	Student Status	Support Group	Embedded Support: <i>Available accommodations embedded in the online testing platform (TestNav, TIDE, WIDA AMS, and Kite Student Portal) for the computer-based editions of tests.</i>	External or Non-Embedded Support: <i>Available accommodations for the paper-based edition of the test or if test support will be provided outside of the test platform.</i>
					reporting and accountability purposes and students will receive RIDE-produced score reports. SSD Online: Other Recording Answers CB TIDE: Not Recorded
One-to-One Administration	PSAT10_SAT	IEP/504 Only	Accommodation	<i>May be provided as a non-embedded support.</i>	ONE-TO-ONE TESTING. Administration of the assessment individually within school building. SSD Online: One-to-One Testing CB TIDE: <i>Set non-embedded accommodation flag to Yes.</i>
Paper-Based Edition	ACCESS	IEP/504 Only	Accommodation	<i>May be provided as a non-embedded support.</i>	PARTICIPATE IN DIFFERENT TESTING FORMAT. Paper tests are offered as an accommodation for all RI statewide assessments and should be listed in the student's IEP and/or EL Plan. If a student takes the paper edition of the ACCESS test, they must take the entire test in the paper-based format. Paper materials are ordered by RIDE on behalf of districts.
	DLM	IEP/504/EL Only	Accommodation	<i>May be provided as a non-embedded support.</i>	PAPER-BASED EDITION. Paper tests are not available for DLM. If a student cannot use a computer, or has trouble using a computer, the test administrator will have instructions for how to administer the test outside of the testing platform on the testlet TIPS sheet.
	NGSA	IEP/504/EL Only	Accommodation	SPANISH TESTS. <i>See Spanish Edition for information on computer-based Spanish tests.</i>	PAPER-BASED EDITION. A preprinted paper test may be administered as an accommodation for a student who is unable to use a computer or to take the computer-based test due to a disability. See the NGSA Test Coordinator Manual for ordering information. Preprinted paper tests are available in English only. TIDE: Paper Edition SPANISH TESTS. <i>See Spanish Edition information.</i> TRANSCRIPTION: Students using the paper-based edition must also have the test administrator transcribe the student's responses into the Test Delivery System (TDS) before the end of the testing window. Instructions are included in the Test Administrator Manual. <i>Student responses not transcribed into the TDS will not be scored.</i>

Test Support Name	Test	Student Status	Support Group	Embedded Support: <i>Available accommodations embedded in the online testing platform (TestNav, TIDE, WIDA AMS, and Kite Student Portal) for the computer-based editions of tests.</i>	External or Non-Embedded Support: <i>Available accommodations for the paper-based edition of the test or if test support will be provided outside of the test platform.</i>
Paper-Based Edition	PSAT10_SAT	IEP/504/EL Only	Accommodation	N/A	<p>PAPER-BASED EDITION. Paper-based tests may be provided as an accommodation for a student who is unable to use a computer or to take the computer-based test due to a disability.</p> <p><i>EL students:</i> Any current or former EL student with or without a disability may take the paper edition of the PSAT 10 or SAT.</p> <p><i>Spanish tests:</i> The PSAT 10 and SAT are not available in Spanish.</p> <p>Materials: All paper test materials should be ordered by emailing rischoolday@collegeboard.org</p> <p>SSD Online: Paper-based Edition</p> <p>PAGE TURNER. Use of a page turner if student is taking paper edition of the SAT or PSAT 10. If student is approved for a scribe, scribe may turn pages. Otherwise, page turner can be approved under “other”.</p> <p>SSD Online: Other or Scribe</p> <p>CB TIDE: Not Recorded</p>
	RICAS	IEP/504/EL Only	Accommodation	SPANISH TESTS. See <i>Spanish Edition</i> for information on computer-based Spanish tests.	<p>PAPER-BASED EDITION. Paper tests are an accommodation for a student who is unable to use a computer or take the computer-based test due to a disability.</p> <p>Students are automatically registered for the computer-based test by RIDE. See the <i>SR/PNP Guide</i> for instructions on updating student registrations so paper test materials are shipped to your school.</p> <p>RICAS PNP Column K (Test Format)</p>
					<p>PAPER-BASED EDITION OF MATH IN SPANISH. Any current or former EL student must meet one of these criteria to receive this accommodation:</p> <ul style="list-style-type: none"> • has a low level of English proficiency, • is currently receiving or has received math instruction in Spanish, • has little or no familiarity with technology, • has a disability that affects their ability to take the

Test Support Name	Test	Student Status	Support Group	Embedded Support: <i>Available accommodations embedded in the online testing platform (TestNav, TIDE, WIDA AMS, and Kite Student Portal) for the computer-based editions of tests.</i>	External or Non-Embedded Support: <i>Available accommodations for the paper-based edition of the test or if test support will be provided outside of the test platform.</i>
					<p>computer-based version of the math test in Spanish. See Section V. Participation Requirements for Students who are English Learners for information on testing first-year EL students.</p> <p>NOTE: Spanish editions (both computer-based and paper-based) do not have English versions of test items. RICAS PNP Column AR (Spanish Edition)</p>
Preferential Seating	PSAT10_SAT	IEP/504 Only	Accommodation	<i>May be provided as a non-embedded support.</i>	<p>PREFERENTIAL SEATING. Placement of student where he/she is most comfortable (e.g., front of room) or placement of student near proctor.</p> <p>SSD Online: Preferential Seating</p> <p>CB TIDE: <i>Set non-embedded accommodation flag to Yes.</i></p>
Read Aloud, Repeat, Clarify, or Translate General Test Instructions	ACCESS	IEP/504/EL Only	Accommodation	<i>May be provided as a non-embedded support.</i>	<p>READ ALOUD, REPEAT, CLARIFY GENERAL TEST DIRECTIONS IN STUDENT'S NATIVE LANGUAGE. Someone fluent in reading and speaking the student's native language must be available and meet the criteria for administering a state assessment as outlined in the Rhode Island Test Coordinator Handbook.</p> <p>General Test Directions do not include any part of any test item, response options, or text (reading passages, charts, graphs, or diagrams) included with the test item.</p> <p>TRANSLATION OF GENERAL TEST DIRECTIONS. For students who speak languages other than English and Spanish and require translated directions, the test administrator may translate general test directions. The test administrator must be fluent in reading and speaking the student's native language. ONLY the general test directions may be translated. Translating ANY part of the item stimulus, questions, reading passages, or response items is a test irregularity.</p>

Test Support Name	Test	Student Status	Support Group	Embedded Support: <i>Available accommodations embedded in the online testing platform (TestNav, TIDE, WIDA AMS, and Kite Student Portal) for the computer-based editions of tests.</i>	External or Non-Embedded Support: <i>Available accommodations for the paper-based edition of the test or if test support will be provided outside of the test platform.</i>
Read Aloud, Repeat, Clarify, or Translate General Test Instructions	RICAS, NGSA	EL Only	Accommodation	READ ALOUD/REPEAT/CLARIFY GENERAL TEST DIRECTIONS IN STUDENT'S NATIVE LANGUAGE. For students who take the math test in Spanish, test directions in the online test platform will be in Spanish. No other languages will be available other than English and Spanish. PNP: Not Recorded	READ ALOUD/REPEAT/CLARIFY GENERAL TEST DIRECTIONS IN STUDENT'S NATIVE LANGUAGE. For students who speak languages other than English and Spanish and who require translated directions, the test administrator may translate general test directions. The test administrator must be fluent in reading and speaking the student's native language. Printed copies of the general test directions in languages other than Spanish are not available. Translate ONLY the general test directions. General test directions do not include any part of any test item, response option, or text (reading passages, charts, graphs, diagrams, or other pictures) included with the test item. NGSA TIDE: Not Recorded RICAS PNP Column: Not Recorded
	RICAS, NGSA	EL Only	Accommodation	TRANSLATION OF GENERAL TEST DIRECTIONS. For students who take the science test in Spanish, test directions in the online test platform will be in Spanish. No other languages will be available online other than English and Spanish. TIDE: Not Recorded	TRANSLATION OF GENERAL TEST DIRECTIONS. For students who speak languages other than English and Spanish and require translated directions, the test administrator may translate general test directions. The test administrator must be fluent in reading and speaking the student's native language. Translate ONLY the general test directions. Do not translate ANY part of the item stimulus, questions, reading passages, or response items. NGSA TIDE: Not Recorded RICAS PNP Column: Not Recorded
	NGSA	IEP/504/EL Only	Accommodation	<i>Provide as a non-embedded support.</i>	SIMPLIFIED TEST DIRECTIONS. The test administrator can simplify ONLY the general test directions using the guidelines found in the back of this manual. Simplifying any part of a test item is a violation of test administrator procedures. Directions may be simplified in student's native language. NOTE: A separate setting may also be required. NGSA TIDE: Simplified Test Directions

Test Support Name	Test	Student Status	Support Group	Embedded Support: Available accommodations embedded in the online testing platform (TestNav, TIDE, WIDA AMS, and Kite Student Portal) for the computer-based editions of tests.	External or Non-Embedded Support: Available accommodations for the paper-based edition of the test or if test support will be provided outside of the test platform.
Read Aloud, Repeat, Clarify, or Translate General Test Instructions	PSAT10_SAT	EL Only	Accommodation	Provide as a non-embedded support.	TRANSLATED GENERAL TEST DIRECTIONS. For students who speak languages other than English and who require translated directions, printed copies of the general test directions are posted on the accommodations web page in the following languages: Albanian, Arabic, Bengali, Bosnian, Cambodian (Khmer), Chinese (Mandarin), French, Gujarati, Haitian Creole, Hindi, Italian, Polish, Portuguese, Russian, Somali, Spanish, Urdu, and Vietnamese. SSD Online: Not Recorded CB TIDE: Set Non-embedded accommodation and EL flags to Yes.
Read Aloud, Text-to-Speech, Recorded Audio	ACCESS	IEP/504 Only	Accommodation	<p>(Updated for 2022). These accommodations may be provided to EL students with disabilities who have a documented need for a human reader, additional time for language processing, or who have attention/focus needs due to a documented disability.</p> <p>Available for: Listening, Speaking, Writing</p> <p>See the <i>WIDA Accommodations and Accessibility Features Manual</i>, pages 12- 15 for details on preparing for and administering these accommodations.</p> <hr/> <p>IN-PERSON HUMAN READER: Test administrators supplement the pre-recorded audio by reading text answer choices and text labels in graphics.</p> <p>REPEAT IN-PERSON HUMAN READER. May be provided as a non-embedded support.</p> <p>MANUAL CONTROL OF ITEM AUDIO. This accommodation allows the play button to be enabled and activated by the student one time. WIDA AMS: Select prior to testing</p> <p>REPEAT ITEM AUDIO (RA). This accommodation allows the play button to be enabled and activated by the student. After the initial audio play, a repeat button becomes available. Once initiated, the audio cannot be paused or stopped. WIDA AMS: Select prior to testing</p>	<p>IN-PERSON HUMAN READER. Test administrators read instructions, text answer choices, and text labels in graphics using the appropriate script from the WIDA store (wceps.org).</p> <p>REPEAT IN-PERSON HUMAN READER. This accommodation may be used to provide support that is more intensive for students who have a documented print disability and who need repetition based on language processing needs or attention/focus needs due to a documented disability.</p> <p>MANUAL CONTROL OF ITEM AUDIO. Test administrators ask students whether they are ready to listen before playing any track of the Listening and Speaking CD. WIDA AMS: Select prior to testing</p> <p>REPEAT ITEM AUDIO (RA). Test administrators ask the student whether they are ready to listen to the audio of the Listening and Speaking CD. When the student</p>

Test Support Name	Test	Student Status	Support Group	Embedded Support: Available accommodations embedded in the online testing platform (TestNav, TIDE, WIDA AMS, and Kite Student Portal) for the computer-based editions of tests.	External or Non-Embedded Support: Available accommodations for the paper-based edition of the test or if test support will be provided outside of the test platform.
					indicates they are ready to hear the audio again, test administrators replay the track <i>one time</i> .
Read Aloud, Text-to-Speech, Recorded Audio	DLM	IEP/504 Only	Accommodation	SPOKEN AUDIO Synthetic Spoken Audio (read aloud with highlighting) is read from left to right and top to bottom. Three preferences are available for Spoken Audio: <ul style="list-style-type: none"> • text only • text and graphics • nonvisual (includes description of page layout for students who are blind or have visual impairments). Screenshots showing these supports begin in the <i>Demonstration of Personal Needs and Preferences Supports: What Students Will See</i> section of the <i>DLM Accessibility Manual</i> . DLM PNP Profile: Spoken Audio	HUMAN READ ALOUD. Test administrators may read the assessment aloud to students. Alternate text will include descriptions of graphics and alternate text descriptions of images as additional pages after the main TIP. The TEST ADMINISTRATION MANUAL also includes information about human read aloud. DLM PNP Profile: Human Read Aloud PARTNER-ASSISTED SCANNING (PAS). This is a strategy in which test administrators assist students with scanning response options. Test administrators read and/or point to each response option, and students indicate when presented their desired response. DLM PNP Profile: Partner-assisted scanning (PAS)
Read Aloud, Text-to-Speech, Recorded Audio	NGSA	IEP/504/EL Only	Accommodation	TEXT-TO-SPEECH: Student uses embedded Text-to-Speech feature in the Test Delivery Platform for read aloud. The student can control the speed and the volume. <i>With headphones:</i> student may be tested in a typical-size group. <i>Without headphones:</i> student must be tested in a separate setting. NGSA TIDE: Text-to-Speech (<i>select Stimuli & Items</i>) Spanish Tests. The student will be taking the computer-based NGSA test in Spanish. <ul style="list-style-type: none"> • Students may toggle back-and-forth between English and Spanish text and audio of the test items, as necessary. • The audio provided will also change from English to Spanish depending on which version of the test item the student has displayed. • The entire test will be read word-for-word in Spanish. NGSA TIDE: Read Aloud in Spanish	HUMAN READ ALOUD: Student requires a human read aloud for science tests in English or Spanish for either paper or computer-based science tests. <ul style="list-style-type: none"> • See Appendix K for Read Aloud Guidelines for English and Spanish. • See Spanish Edition for additional information on the Spanish paper edition of the science test. NGSA TIDE: Read Aloud in English or Read Aloud in Spanish READ ALOUD SELECTED WORDS ON THE SCIENCE TEST: Accessibility Feature. The test administrator reads aloud in English or Spanish (or signs, in the case of a student who is deaf or hard-of-hearing) selected words on the science test, as requested by the student. The student will point to the word or phrase that he or she needs read aloud or signed. Test administrator quietly reads aloud or signs the selected word to the student. Students using this feature may be tested alongside other students in groups of any size. NGSA TIDE: Not Recorded

Test Support Name	Test	Student Status	Support Group	Embedded Support: <i>Available accommodations embedded in the online testing platform (TestNav, TIDE, WIDA AMS, and Kite Student Portal) for the computer-based editions of tests.</i>	External or Non-Embedded Support: <i>Available accommodations for the paper-based edition of the test or if test support will be provided outside of the test platform.</i>
				READ ALOUD SELECTED WORDS ON THE SCIENCE TEST. <i>This is an accessibility feature for NGSA.</i>	
Read Aloud, Text-to-Speech, Recorded Audio	PSAT10_SAT	IEP/504 Only	Accommodation	<p>TTS (READ TEXT ONLY). This accommodation provides a short description of each image. This enables the native speech synthesizer to read the text on the screen and the short image description. It is intended for students who do not require a detailed description of images, and requires 50% extended time, unless approved for greater.</p> <p>SSD Online Options:</p> <ul style="list-style-type: none"> Assistive technology and assistive technology compatible format ATC test form Reader MP3 Audio Text-to-Speech <p>CB TIDE: TTS (Read Text Only)</p> <p>READ TEXT AND GRAPHICS. This accommodation is for students who need screen readers. It provides a description for each image. In addition to reading the text on the screen, the speech synthesizer reads the image descriptions. This accommodation requires 100% extended time or longer depending on student needs.</p> <p>SSD Online: Read Text Only OR Read Text and Graphics</p> <p>CB TIDE: Read Text Only OR Read Text and Graphics</p>	<p>HUMAN READER: Personal assistant reads aloud all sections using a reader script in a one-to-one setting. This accommodation cannot be used with a digital administration.</p> <p>SSD Online: Human Reader</p> <p>CB TIDE: Set <i>Non-embedded accommodation</i> flag to Yes.</p> <p>PRE-RECORDED AUDIO (MP3 VIA STREAMING). See MP3. Contact rischoolday@collegeboard.org to order MP3.</p> <p>SSD Online: Pre-recorded Audio (MP3 via Streaming)</p> <p>CB TIDE: Set <i>Non-embedded accommodation</i> flag to Yes.</p>
Read Aloud, Text-to-Speech, Recorded Audio	RICAS	IEP/504 Only	Special Access Accommodation	<p>TEXT-TO-SPEECH FOR ELA: The student requires a read aloud and will use the embedded text-to-speech function for the ELA test, including test questions, response options, and passages, with or without headphones.</p> <p>Criteria: This accommodation is intended a student who has a disability(ies) that severely limits or prevents them from reading, as documented in locally</p>	<p>HUMAN READ ALOUD FOR ELA. The student requires a human read aloud for the ELA test and meets the criteria below. This includes oral presentation of test questions, response options, and passages, using a human reader (the test administrator reads aloud the computer-based test either logged in to a nearby computer or sitting next to the student; or reads aloud the paper-based test to the student).</p>

Test Support Name	Test	Student Status	Support Group	Embedded Support: Available accommodations embedded in the online testing platform (TestNav, TIDE, WIDA AMS, and Kite Student Portal) for the computer-based editions of tests.	External or Non-Embedded Support: Available accommodations for the paper-based edition of the test or if test support will be provided outside of the test platform.
				<p>administered diagnostic evaluations. The student must meet all of the following criteria:</p> <ul style="list-style-type: none"> • be virtually unable to read, even after varied and repeated attempts to teach the student to do so (i.e., the student is at the very beginning stages of learning to read, and not simply reading below grade level); and • uses this accommodation routinely (except during reading instruction); and • receives ongoing intervention to learn the skill. <p>The student:</p> <ul style="list-style-type: none"> • may be tested in a typical-sized group if using headphones; • must be tested individually, in a separate setting, if not using headphones. <p>NOTES:</p> <ul style="list-style-type: none"> • Students who test with this accommodation will receive a valid ELA score. • This accommodation is only for students with a reading disability that meets the criteria above. It is not intended for EL students, unless they have a reading disability that meets the criteria above. • <i>Guidelines for Transcribing Student Responses</i> are in the Test Coordinator Manual. <p>RICAS PNP Column AC (Text-to-Speech). See the <i>SR/PPN Guide</i> for more information</p>	<p>Criteria: This accommodation is intended for a small number of students with documented disabilities that severely limit or prevent them from reading, as documented in locally administered diagnostic evaluations. The student must meet all of the following criteria:</p> <ul style="list-style-type: none"> • be virtually unable to read, even after varied and repeated attempts to teach the student to do so (i.e., the student is at the very beginning stages of learning to read, and not simply reading below grade level); and • uses this accommodation routinely (except during reading instruction); and • receives ongoing intervention to learn the skill. <p>The student:</p> <ul style="list-style-type: none"> • must be tested individually, in a separate setting, if the student is the only student receiving this accommodation for their grade level. • may be tested in a group of no more than 5 if a human reader is used. All students in the group must have this accommodation and be in the same grade level. <p>NOTES:</p> <ul style="list-style-type: none"> • Students who test with this accommodation will receive a valid ELA score. • This accommodation is <i>only</i> for students with a reading disability that meets the criteria above. It is not intended for EL students, unless they a reading disability that meets the criteria above. <p>RICAS PNP Column Z (Human Read Aloud as Special Access Accommodation)</p>

Test Support Name	Test	Student Status	Support Group	Embedded Support: <i>Available accommodations embedded in the online testing platform (TestNav, TIDE, WIDA AMS, and Kite Student Portal) for the computer-based editions of tests.</i>	External or Non-Embedded Support: <i>Available accommodations for the paper-based edition of the test or if test support will be provided outside of the test platform.</i>
Read Aloud, Text-to-Speech, Recorded Audio	RICAS	IEP/504/EL Only	Accommodation	<p>TEXT-TO-SPEECH FOR MATH: Students with disabilities and EL students who require text-to-speech (TTS) for math tests in English. Text is read aloud using embedded text-to-speech technology in TestNav. The student can control the volume.</p> <p>NOTES:</p> <ul style="list-style-type: none"> Using headphones: test student in a typical-sized group. Not using headphones: test student in a separate setting. <i>Reading aloud selected words on the mathematics tests</i> is an accessibility feature and may be more appropriate for students who need occasional reading assistance. <p>RICAS PNP Column AC (Text-to-Speech)</p> <p>TEXT-TO-SPEECH FOR MATH (SPANISH):</p> <p>TTS in Spanish audio for the math test is not available as an embedded support through TestNav. Any EL student requiring a read aloud in Spanish must have human read aloud. <i>See next column for more information.</i></p>	<p>HUMAN READ ALOUD FOR MATH: Student requires a human read-aloud for math test in English or Spanish.</p> <ul style="list-style-type: none"> Paper-based test*: See Read Aloud Guidelines in Appendix K Computer-based test*: See Read Aloud Guidelines in Appendix K <p>Place students in separate human read-aloud session in PAN so all students receive the same test form. See the <i>SR/PNP Guide</i> for more information.</p> <p>RICAS PNP Column Y (Human Read Aloud as a Standard Accommodation [Mathematics])</p> <p>READ ALOUD SELECTED WORDS ON THE MATHEMATICS TESTS is an accessibility feature and may be more appropriate for students who need occasional reading assistance. Students taking the Spanish versions of RICAS mathematics or NGSA science tests may also find this accessibility feature helpful.</p> <p>RICAS PNP Column Y (Human Read Aloud as a Standard Accommodation [Mathematics])</p> <p>*HUMAN READ ALOUD FOR MATH (SPANISH). Student requires a human read-aloud in Spanish for the math tests. For both computer-based and paper-based tests:</p> <ul style="list-style-type: none"> See Read Aloud Guidelines in Appendix K. Administer the test in a separate setting either individually or to a group of 2–5 students all of whom are receiving the human reader in Spanish accommodation. Spanish editions of the math tests do not have English versions of test items; test booklets are not bilingual. <p>RICAS PNP Column Y (Standard Human Read Aloud Mathematics)</p>
Screen Reader	PSAT10_SAT	IEP/504 Only	Accommodation	<p>ASSISTIVE TECHNOLOGY. The online test platform can provide the student with use of a screen reader while taking the test. This accommodation renders an alternative long description for an image to convey the necessary information. It is intended for students with</p>	<p>ASSISTIVE TECHNOLOGY COMPATIBLE (ATC) TEST FORM. The ATC format provides a digital version of the test delivered on a flash drive. This test is in an accessible Word format that is intended for use with technologies that assist students in reading the test, such as screen</p>

Test Support Name	Test	Student Status	Support Group	Embedded Support: <i>Available accommodations embedded in the online testing platform (TestNav, TIDE, WIDA AMS, and Kite Student Portal) for the computer-based editions of tests.</i>	External or Non-Embedded Support: <i>Available accommodations for the paper-based edition of the test or if test support will be provided outside of the test platform.</i>
				<p>visual impairment using assistive technology devices, including screen readers such as JAWS, NVDA, and refreshable braille displays (RBDs). It is automatically enabled with the Assistive Technology (AT) accommodation. Students test with standard time, except during the Writing and Language Test, which requires 100% extended time, unless approved for other extended time accommodation.</p> <p>SCREEN READER. For students testing with a screen reader such as JAWS or NVDA, please refer to the Assistive Technology Resource Guide at digitaltesting.collegeboard.org for configuration requirements.</p> <p>REFRESHABLE BRAILLE. For students who use refreshable braille, tactile graphics must be ordered. CB TIDE: AT (JAWS, NVDA, Braille Display, etc.) SSD Online: Assistive Technology (Provide name of accommodation that requires use of a screen reader).</p>	<p>readers and other technologies. Some students use this accommodation without other technologies in order to enlarge text.</p> <p>SSD Online: Assistive Technology Compatible (ATC) Test Form.</p> <p><i>See HUMAN READER for paper administrations.</i></p>
	RICAS	IEP/504 Only	Accommodation	<p>SCREEN READER EDITION. This is a special format of the computer-based test for a student who is blind or visually impaired that can be used to run an assistive technology application (e.g., JAWS, NVDA, etc.) for browser navigation and to deliver the computer-based test. Screen Reader is generally used in conjunction with Refreshable Braille or hard-copy braille test.</p> <ul style="list-style-type: none"> • If <i>Spell Check</i> is also selected, the student must use a spell-checking program on a second computer. • Mathematics tests: a braille hard-copy test will automatically be mailed so students will have all figures and graphics. • ELA tests: a braille hard-copy test for ELA will automatically be mailed only if graphics are included in the test. • Screen reader is different from Assistive Technology and Text-to-Speech. Please make sure you select the correct accommodation. 	<i>See Braille Edition</i>

Test Support Name	Test	Student Status	Support Group	Embedded Support: <i>Available accommodations embedded in the online testing platform (TestNav, TIDE, WIDA AMS, and Kite Student Portal) for the computer-based editions of tests.</i>	External or Non-Embedded Support: <i>Available accommodations for the paper-based edition of the test or if test support will be provided outside of the test platform.</i>
				<p>Materials. A hard-copy Braille edition test will automatically be ordered through the SR/PNP. The hard copy will provide the student with the appropriate Braille graphics.</p> <p>TRANSCRIPTION. All responses must be entered into TestNav, either by the student or test administrator.</p> <p>RICAS PNP Column V (Screen Reader)</p>	
Separate or Alternate Test Location	ACCESS	IEP/504 Only	Accommodation	<p>(Updated for 2022). NON-SCHOOL SETTING (HOME OR HOSPITAL). For a student who is unable to attend school due to hospitalization or another extended absence during the test window, the test may be administered in a non-school setting. Administration must follow all policies and procedures and test administrator must complete all required training for ACCESS assessments. If you have questions about administering the test in a non-school setting, please contact Heather Heineke (heather.heineke@ride.ri.gov).</p> <p><i>See the WIDA Accommodations and Accessibility Features Manual, page 16 for more information.</i></p> <hr/> <p>For computer-based tests, only school-owned laptops may be used.</p>	
	PSAT10_SAT NGSA RICAS DLM	IEP/504 Only	Accommodation	<p>OUTSIDE OF THE SCHOOL BUILDING (HOME OR HOSPITAL). Administration in alternate setting outside of school building with appropriate supervision (e.g., homebound, medical care facility). <i>This accommodation does not include students attending outplacement schools.</i></p> <p>For NGSA, RICAS, and DLM: Not Recorded</p> <p>PSAT10_SAT SSD Online: Home / Hospital Testing</p> <p>CB TIDE: <i>Set non-embedded accommodation flag to Yes.</i></p>	
Sign Language Interpreter for General Test Directions	ACCESS	IEP/504 Only	Accommodation	May be provided as a non-embedded support.	<p>INTERPRETER SIGNS TEST DIRECTIONS IN ASL. Interpreter signs test directions in American Sign Language (ASL) or other sign system. Directions refer to test administration logistics, test directions, and practice items provided prior to the first test item.</p> <ul style="list-style-type: none"> • Available for Listening, Speaking, and Writing domains • Use Sign Language Translation Guidance in Appendix G of this manual. • Do not translate test items into ASL or other sign system. • See the <i>WIDA Accessibility and Accommodations Manual</i>, page 13 for more information.

Test Support Name	Test	Student Status	Support Group	Embedded Support: <i>Available accommodations embedded in the online testing platform (TestNav, TIDE, WIDA AMS, and Kite Student Portal) for the computer-based editions of tests.</i>	External or Non-Embedded Support: <i>Available accommodations for the paper-based edition of the test or if test support will be provided outside of the test platform.</i>
	NGSA	IEP/504 Only	Accommodation	<i>May be provided as a non-embedded support.</i>	HUMAN SIGNER. Human signer for a student to who is deaf or hard-of-hearing for general test directions, not test items or reading passages. NGSA TIDE: Not Recorded
	PSAT10_SAT	IEP/504 Only	Accommodation	<i>May be provided as a non-embedded support.</i>	SIGN LANGUAGE INTERPRETER FOR ORAL INSTRUCTIONS ONLY. Oral test directions provided using American Sign Language or Signed Exact English. SSD Online: Sign Language Interpreter for Oral Instructions ONLY CB TIDE: Set non-embedded accommodation flag to Yes.
	RICAS	IEP/504 Only	Accommodation	<i>May be provided as a non-embedded support.</i>	SIGN LANGUAGE INTERPRETER FOR GENERAL TEST DIRECTIONS. Human signer for a student to who is deaf or hard-of-hearing for general test directions, not test items or reading passages. RICAS PNP: Not Recorded
Sign Language Interpreter for Test Questions	ACCESS	IEP/504 Only	Accommodation	ELLs Identified as Deaf or Hard-of-Hearing. Below is the RI State Assessment Policy for using ASL or other sign system on the computer-based and paper-based ACCESS assessments. See Appendix G of this manual for information on providing the sign language accommodation. <ul style="list-style-type: none"> • The general test directions may be translated into ASL. • All sign language interpreter must use the guidelines found in Appendix G of this manual and meet the qualifications for administering the ACCESS tests. • The listening domain test items may be translated into ASL, or other sign system. If the student does not know ASL, or other sign system, and does not lip-read, then the listening domain should be omitted from testing. • The speaking domain will be omitted from testing students who cannot vocalize. If a student can vocalize, in English, then they may be tested on this domain. The IEP Team should decide whether or not the student should be tested in this domain and include that decision in the student's IEP. • The reading domain may not be translated into ASL or any other sign system. • The writing domain may not be translated into ASL or any other sign system. <i>See the WIDA Accommodations and Accessibility Features Manual, page 20 for more guidance.</i>	
	DLM	IEP/504 Only	Accommodation	<i>May be provided as a non-embedded support.</i>	SIGN INTERPRETATION OF TEXT. Sign the content to students using American Sign Language (ASL), Signing Exact English, or personalized sign systems. DLM PNP Profile: Sign Interpretation of Text

Test Support Name	Test	Student Status	Support Group	Embedded Support: <i>Available accommodations embedded in the online testing platform (TestNav, TIDE, WIDA AMS, and Kite Student Portal) for the computer-based editions of tests.</i>	External or Non-Embedded Support: <i>Available accommodations for the paper-based edition of the test or if test support will be provided outside of the test platform.</i>
Sign Language Interpreter for Test Questions	NGSA	IEP/504 Only	Accommodation	<i>May be provided as a non-embedded support.</i>	SIGN LANGUAGE INTERPRETER. Sign language interpreters may translate the test questions (items), and response options into American Sign Language, Signed Exact English, or other sign system used by the student in accordance with the Sign Language Accommodation guidance in Appendix G. NGSA TIDE: Sign Language Interpreter
	PSAT10_SAT	IEP/504 Only	State-Allowed Accommodation	<i>May be provided as a non-embedded support.</i>	SIGN LANGUAGE INTERPRETER. Sign-language interpreter for reading, writing, and/or mathematics questions and response options. SSD Online: Sign language Interpreter for Test Questions. CB TIDE: <i>Set non-embedded accommodation flag to Yes.</i> SIGNED EXACT ENGLISH (SEE) may be provided for signing test questions and reading passages if the student has both a reading and hearing impairment. SSD Online: Sign Language Interpreter Other CB TIDE: <i>Set non-embedded accommodation flag to Yes.</i>
Sign Language Interpreter for Test Questions	RICAS	IEP/504 Only	Accommodation	<i>May be provided as a non-embedded support.</i>	HUMAN SIGNER FOR MATHEMATICS AND ELA TEST QUESTIONS AND RESPONSE OPTIONS ONLY. A student who is deaf or hard-of-hearing requires a sign language interpreter for test questions and response options: <ul style="list-style-type: none"> • The test must be signed in accordance with the Sign Language Accommodation guidance in Appendix G. • The test must be administered in a separate setting, either individually or to a small group of 2–5 students, all of whom are receiving this accommodation. NOTE: <ul style="list-style-type: none"> • Under secure conditions supervised by the principal, interpreters may review the test materials once they become available, either online or delivered to the school, for the purpose of preparing to sign the test. Test materials may not be removed from the school or accessed online outside of the school. Interpreters must sign non-disclosure agreements. • If preferred, selected words, phrases, or sections of

Test Support Name	Test	Student Status	Support Group	Embedded Support: <i>Available accommodations embedded in the online testing platform (TestNav, TIDE, WIDA AMS, and Kite Student Portal) for the computer-based editions of tests.</i>	External or Non-Embedded Support: <i>Available accommodations for the paper-based edition of the test or if test support will be provided outside of the test platform.</i>
					<p>the mathematics test may be signed, as requested, rather than signing the entire test.</p> <ul style="list-style-type: none"> Students must be in separate human signer Session in PAN so student receive the same test form. See the SR/PNP Guide for more information. For students who require a human signer for ELA reading passages, see <i>Human Signer for ELA Reading Passages</i> <p>RICAS PNP Column AA (Human Signer as a Standard Accommodation [Mathematics and ELA])</p>
Sign Language Interpreter for Reading Passages	RICAS	IEP/504 Only	Special Access Accommodation	<i>May be provided as a non-embedded support.</i>	<p>HUMAN SIGNER FOR ELA READING PASSAGES. A student who is deaf or hard-of-hearing and is severely limited or prevented from reading, as documented in locally-administered diagnostic evaluations may need a human signer for the reading passages on the RICAS ELA test. The student must meet all of the following criteria:</p> <ul style="list-style-type: none"> be virtually unable to read, even after varied and repeated attempts to teach the student to do so (i.e., the student is at the very beginning stages of learning to read, and not simply reading below grade level), due to a documented disability and/or history of early and prolonged lack of exposure to and use of language; and uses this accommodation routinely, except during reading instruction; and receives ongoing intervention to learn the skill. <p>ADMINISTRATION NOTES:</p> <ul style="list-style-type: none"> Under secure conditions supervised by the principal, interpreters may review the test materials once they become available, either online or delivered to the school, for the purpose of preparing to sign the test. Test materials may not be removed from the school or accessed online outside of the school. The test must be administered in a separate setting, either individually or to a small group of 2–5 students, all of whom are receiving this accommodation.

Test Support Name	Test	Student Status	Support Group	Embedded Support: <i>Available accommodations embedded in the online testing platform (TestNav, TIDE, WIDA AMS, and Kite Student Portal) for the computer-based editions of tests.</i>	External or Non-Embedded Support: <i>Available accommodations for the paper-based edition of the test or if test support will be provided outside of the test platform.</i>
					<ul style="list-style-type: none"> Interpreters must sign non-disclosure agreements. Students must be in separate human signer Session in PAN so students receive the same test form. <i>See the SR/PNP Guide for more information.</i> The test must be signed in accordance with the Sign Language Accommodation guidance in Appendix G. <p>RICAS PNP Column AB (Human Signer as Special Access Accommodation [ELA])</p>
Sign Language Response - ASL	PSAT10_SAT	IEP/504 Only	State-Allowed Accommodation	May be provided as a non-embedded support.	<p>AMERICAN SIGN LANGUAGE (ASL). Student responds in American Sign Language (ASL) for reading and/or Mathematics.</p> <p>NOTE: Test scores of students using this accommodation will not be accepted by universities or colleges for admissions purposes. Please discuss with students and families to ensure they understand the implications of this accommodation.</p> <p>SSD Online: Other Recording Answers TIDE: <i>Set non-embedded accommodation flag to Yes.</i></p>
Simplified Test Directions	NGSA	IEP/504/EL Only	Accommodation	<i>May be provided as a non-embedded support.</i>	<p>SIMPLIFIED TEST DIRECTIONS. The test administrator can simplify ONLY the general test directions using the guidelines found in Appendix L of this manual. Simplifying any part of a test item is a violation of test administrator procedures. Directions may be simplified in the student's native language. A separate setting may also be required.</p> <p>NGSA TIDE: Simplified Test Directions</p>
Small Group	ACCESS, RICAS, NGSA	Any Student	Accessibility Feature	SMALL GROUP TESTING. This is an accessibility feature for the ACCESS, RICAS, and NGSA assessments.	
	DLM			SMALL GROUP ADMINISTRATION. DLM is designed to be administered to each student individually. <i>Administering the DLM test to students in small groups of any kind are prohibited and considered a testing violation.</i>	
	PSAT10_SAT	IEP/504 Only	Accommodation	<i>May be provided as a non-embedded support.</i>	SMALL GROUP TESTING. Small groups may not have more than ten students. The ideal size for a small group for testing is two to eight students. Students in small groups should have the same or similar

Test Support Name	Test	Student Status	Support Group	Embedded Support: <i>Available accommodations embedded in the online testing platform (TestNav, TIDE, WIDA AMS, and Kite Student Portal) for the computer-based editions of tests.</i>	External or Non-Embedded Support: <i>Available accommodations for the paper-based edition of the test or if test support will be provided outside of the test platform.</i>
					<p>accommodations. Testing location must be a secure and safe environment within the school building.</p> <p>RI STATE POLICY ON SMALL GROUPS. Small groups may not have more than ten students. The ideal group size is two to eight students. Students in small groups should have the same or similar accommodations.</p> <p>SSD Online: Small Group Testing</p> <p>CB TIDE: <i>Set non-embedded accommodation flag to Yes.</i></p>
Spanish Edition	PSAT10_SAT	EL ONLY	Accommodation	SPANISH EDITION. <i>Spanish editions of the PSAT 10 and SAT School Day tests are not available.</i>	
	NGSA	EL	Accommodation for EL Students	<p>SPANISH EDITION OF SCIENCE TEST. Spanish and English translations for test items are available through a toggle screen for EL students. Students will be able to go back-and-forth between English and Spanish to answer test items in either, or both, languages. If a student also requires a read-aloud, the TTS feature will work in both English and Spanish, depending on which screen the student is displaying.</p> <p>NGSA TIDE: Spanish Edition</p>	<p>PAPER-BASED EDITION OF SPANISH (SCIENCE). Preprinted Spanish science tests are not available. If an EL student requires a printed science test, items must be printed individually using the Print-on-Demand feature. All responses must be transcribed (see below) in order to be scored.</p> <p>NGSA TIDE: Spanish Edition <i>and</i> Print-on-Demand</p> <p>TRANSCRIPTION. Students using the paper-based edition in English or the Print-on-Demand version of the Spanish test must have the test administrator transcribe the student's responses into the Test Delivery System (TDS) before the end of that testing session. Instructions are included in the Test Administrator Manual.</p>
Spanish Edition	RICAS	EL Only	Accommodation	<p>SPANISH EDITION OF RICAS MATH. Computer-based edition in Spanish of the math tests may be administered to any EL student who meets one of these criteria:</p> <ul style="list-style-type: none"> • has a low level of English proficiency, • is currently receiving or has received mathematics instruction in Spanish, or • has little or no familiarity with technology. <p>NOTE: The Spanish version of the math test does not have English versions of the test items.</p> <p>RICAS PNP Column AR (Spanish Edition)</p>	<p>SPANISH EDITION OF RICAS MATH. Paper-based options for EL students are on page 45.</p>

Test Support Name	Test	Student Status	Support Group	Embedded Support: Available accommodations embedded in the online testing platform (TestNav, TIDE, WIDA AMS, and Kite Student Portal) for the computer-based editions of tests.	External or Non-Embedded Support: Available accommodations for the paper-based edition of the test or if test support will be provided outside of the test platform.
Speech-to-text, Scribe, Dictates, or Records Responses	ACCESS	IEP/504 Only	Accommodation	<p>Updated for 2022. AAC DEVICES. AAC is considered the voice of a student who is unable to produce functional speech. Use of an AAC during testing should be consistent with the student's day-to-day instruction and communication methods and is not considered an accommodation.</p> <p><i>See the WIDA Accommodations and Accessibility Features Manual, page 21 for instructions on how to administer the ACCESS tests to students using AAC devices.</i></p>	<p>SCRIBE. The test administrator marks or writes student responses into the student response booklet as the student dictates responses either verbally, using an external speech-to-text device, an augmentative communication device (e.g., picture/word board), or by gesturing, pointing, or eye gazing. All responses must be transcribed at the time of testing.</p> <p>Available for: Listening, Reading, Writing</p> <p>WORD PROCESSOR OR SIMILAR KEYBOARDING DEVICE USED TO RESPOND TO TEST ITEMS. Student responds using standalone/external word processing or similar keyboarding device that is not compatible with the online test platform.</p> <p>Available for Listening, Reading, Writing</p> <p><i>See page 17 in the WIDA Accommodations and Accessibility Features Manual for more information on planning for and administering tests using this accommodation and Appendix B for transcription guidance.</i></p> <p>STUDENT RESPONDS USING RECORDING DEVICE. Student has a documented disability that affects their ability to write or process language. The student responds by using a recording device to respond, which is played back and transcribed by the student.</p> <p>Available only for Writing.</p> <p><i>See the WIDA Accommodations and Accessibility Features Manual, page 16 for information on planning and administering tests using this accommodation.</i></p>
Speech-to-text, Scribe, Dictates, or Records Responses	DLM	IEP/504 Only	Accommodation	<p><i>May be provided as a non-embedded support.</i></p>	<p>TEST ADMINISTRATOR ENTERING STUDENT RESPONSES. If a student is unable to input their own responses, they may indicate their responses through their typical response/communication mode (e.g., eye gaze, gesture). Test administrators may key in those responses only when the student is unable to record their responses.</p> <p>DLM PNP Profile: Test Administrator Entering Student Responses</p>

Test Support Name	Test	Student Status	Support Group	Embedded Support: <i>Available accommodations embedded in the online testing platform (TestNav, TIDE, WIDA AMS, and Kite Student Portal) for the computer-based editions of tests.</i>	External or Non-Embedded Support: <i>Available accommodations for the paper-based edition of the test or if test support will be provided outside of the test platform.</i>
Speech-to-text, Scribe, Dictates, or Records Responses	NGSA	IEP/504 Only	Accommodation	<p>SPEECH-TO-TEXT (STT). A student uses a speech-to-text program. There are two options:</p> <ol style="list-style-type: none"> 1. STT program on a separate computer if program is not compatible with the Test Delivery System. 2. Use Permissive Mode to run STT programs such as Dragon Naturally Speaking, which will work with the Test Delivery System. Always test the functionality of the student's STT program prior to testing to ensure compatibility. Select Permissive Mode in TIDE prior to testing. <p>NGSA TIDE: Speech-to-Text <i>and</i> Permissive Mode.</p> <p>NOTE: NGSA does not contain constructed response items; only multiple-choice items. If a student has a STT accommodation in their IEP for writing, they may not need it for this test. You may want to consider human scribe or dictation as an accommodation instead.</p>	<p>HUMAN SCRIBE. A human scribe records the student's responses verbatim during testing either into the Test Delivery System (TDS) directly or the student's answer booklet.</p> <p>NGSA TIDE: SCRIBE</p> <p>SPEECH-TO-TEXT. A student uses an external speech-to-text program that is not compatible with the Test Delivery System on a separate computer to generate their responses to the test questions.</p> <p>STUDENT RECORDS RESPONSES. Student uses an external augmentative communications device (other than a smartphone) to dictate or generate responses under the direct supervision of a test administrator using one of the options below.</p> <p>TRANSCRIPTION: Students using one of the accommodations above must also have the test administrator transcribe the student's responses verbatim directly into the Test Delivery System (TDS) at any time prior to the end of the testing window.</p> <p>EXTERNAL AUDIO RECORDING DEVICE. The student uses an external recording device (other than a smartphone) while reading the test aloud, then the responses are transcribed by either the student or the test administrator into the answer booklet while playing back recorded segment(s). Responses must be deleted from the device once transcription is completed.</p> <p>NGSA TIDE: Not Recorded</p> <p>VIDEO RECORDING DEVICE. Student who is deaf or hard-of-hearing uses a video to record their signed responses to test items, then the responses are transcribed by either the student or the test administrator into TestNav while playing back recorded segment(s). Any recorded responses must be deleted from the device once transcription is complete.</p> <p>NGSA TIDE: Not Recorded</p> <p>INTO TEST BOOKLET. Responses to test items are recorded by the student in the test booklet, rather than</p>

Test Support Name	Test	Student Status	Support Group	Embedded Support: <i>Available accommodations embedded in the online testing platform (TestNav, TIDE, WIDA AMS, and Kite Student Portal) for the computer-based editions of tests.</i>	External or Non-Embedded Support: <i>Available accommodations for the paper-based edition of the test or if test support will be provided outside of the test platform.</i>
					<p>the answer booklet. Responses must be transcribed by a test administrator into the answer booklet. If the student transcribes his or her own responses, the transcription must occur during the test session and be completed on the date in which the test session began.</p> <p>NGSA TIDE: Not Recorded</p>
Speech-to-text, Scribe, Dictates, or Records Responses	PSAT10_SAT	IEP/504 Only	Accommodation	<p>SPEECH-TO-TEXT. Student uses speech-to-text program compatible with the Test Delivery System for responding to test items.</p> <p>SSD Online: Assistive Technology CB TIDE: Permissive Mode</p> <p>WRITER/SCRIBE TO RECORD RESPONSES. <i>May be provided as a non-embedded support.</i></p>	<p>SPEECH-TO-TEXT. Student uses speech-to-text program for responding to test items on separate computer. The online test delivery system can administer the digital test with Speech-to-Text.</p> <p>SSD Online: Assistive Technology</p> <p>WRITER/SCRIBE TO RECORD RESPONSES. Student responds orally for multiple choice items (e.g., student tells assessment administrator which answer they are selecting) and/or for responding to constructed response items for writing.</p> <p>SSD Online: Writer/Scribe to Record Responses CB TIDE: <i>Set non-embedded accommodation flag to Yes.</i></p> <p>RECORD ANSWERS IN TEST BOOKLET. The student records their responses to test items in the paper test booklet, rather than the answer booklet. Responses must be transcribed by a test administrator into the answer booklet. If the student transcribes his or her own responses, the transcription must occur during the test session.</p> <p>Students who require this accommodation should take the paper edition of the SAT or PSAT 10.</p> <p>SSD Online: Record Answers in Test Booklet CB TIDE: <i>Set non-embedded accommodation flag to Yes.</i></p>
Speech-to-text, Scribe, Dictates, or Records Responses	RICAS	IEP/504 Only	Special Access Accommodation	<p>SPEECH-TO-TEXT ON RICAS ELA TEST. This special access accommodation is only for students who meet at least one of the criteria in the next column.</p> <p>If the student meets one of the criteria from the next column, and is taking the computer-based test, the student can communicate their responses to the RICAS ELA test items in one of the following ways:</p>	<p>SCRIBE ACCOMMODATIONS OPTIONS FOR ELA TEST. This special access accommodation is only for students who meet at least one of these criteria:</p> <ol style="list-style-type: none"> 1. The student has a language-processing disability and requires the dictation of virtually all written responses to a scribe or an electronic speech-to-text conversion device to generate responses, OR

Test Support Name	Test	Student Status	Support Group	Embedded Support: Available accommodations embedded in the online testing platform (TestNav, TIDE, WIDA AMS, and Kite Student Portal) for the computer-based editions of tests.	External or Non-Embedded Support: Available accommodations for the paper-based edition of the test or if test support will be provided outside of the test platform.
				<ol style="list-style-type: none"> HUMAN SCRIBE. See next column for details on the computer-based test. WEB EXTENSIONS. Web extensions are available to download for Co:Writer Universal and Read&Write. PNP Column AQ (Web Extension AT Form) See the <i>Assistive Technology Guidelines for RICAS</i> and the <i>SR/PNP Guide</i> for more information. COMPATIBLE STT. A compatible STT device or software used on the same device as TestNav. See the <i>Assistive Technology Guidelines for RICAS</i> for instructions on determining compatibility with TestNav. RICAS PNP Column W (Compatible Assistive Technology) and Column AJ (Speech-to-Text as a Special Access Accommodation [ELA]) INCOMPATIBLE STT. See next column for detail on using and setting up a speech-to-text device or software that is incompatible with TestNav. 	<ol style="list-style-type: none"> The student is unable to use his or her writing hand or arm at the time of testing due to a fracture, severe injury, or recovery from surgery. In this case, the accommodation can be administered as an Emergency Accommodation. Please complete the Emergency Accommodation Form in Appendix E. If the student meets one of the criteria above, the student can communicate their responses to the RICAS ELA test items in one of the following ways: <ol style="list-style-type: none"> HUMAN SCRIBE. A human scribe records the student's responses verbatim (as dictated by the student) during testing directly into TestNav or the student's answer booklet. See Appendix J for RICAS scribe guidelines. RICAS PNP Column AH (Human Scribe as a Special Access Accommodation [ELA]) INCOMPATIBLE SPEECH-TO-TEXT (STT). If the student uses an external STT program that is not compatible with TestNav, the test administrator must transcribe student responses directly into TestNav from the student's separate, external workstation. RICAS PNP Column AJ (Speech-to-Text as a Special Access Accommodation [ELA]) STUDENT DICTATES RESPONSES. Student uses an external augmentative communications device (other than a smartphone) to dictate or generate responses under the direct supervision of a test administrator. RICAS PNP Column: Not Recorded <p>TRANSCRIPTION: Students using one of the accommodations above must also have the test administrator transcribe the student's responses verbatim either directly into TestNav or into the student's answer booklet at any time prior to the end of the testing window. RICAS PNP Column: Not Recorded</p>

Test Support Name	Test	Student Status	Support Group	Embedded Support: <i>Available accommodations embedded in the online testing platform (TestNav, TIDE, WIDA AMS, and Kite Student Portal) for the computer-based editions of tests.</i>	External or Non-Embedded Support: <i>Available accommodations for the paper-based edition of the test or if test support will be provided outside of the test platform.</i>
Speech-to-text, Scribe, Dictates, or Records Responses	RICAS	IEP/504/EL Only	Accommodation	<p>SPEECH-TO-TEXT OPTIONS FOR MATH. The student has a disability that affects their ability to write and they use a scribe or speech-to-text device or software to address this challenge during instruction throughout the day. There are four scribe and speech-to-text options available for students taking the computer-based RICAS math test in either English or Spanish:</p> <ol style="list-style-type: none"> 1. HUMAN SCRIBE. <i>See next column for details on the computer-based test.</i> 2. WEB EXTENSIONS. The web extensions available for Co:Writer Universal and Read&Write will not work on the math tests because they interfere with the Equation Editor. Instead, use either a separate device with a STT program of the student's choice or a Human Scribe. <i>See the next column for details.</i> 3. COMPATIBLE SPEECH-TO-TEXT (STT). A compatible STT device or software used on the same device as TestNav. <i>See the Assistive Technology Guidelines for RICAS</i> for instructions on determining compatibility with TestNav. PNP Column: W (Compatible Assistive Technology). <i>See the SR/PNP Guide</i> for more information. 4. INCOMPATIBLE STT. <i>See SPEECH-TO-TEXT DEVICE OR SOFTWARE in the next column for detail on using and setting up a speech-to-text device or software that is incompatible with TestNav.</i> <p>EMERGENCY ACCOMMODATION: For students who have injured their writing hand due to a fracture or recovery from surgery, speech-to-text options are available as an emergency accommodation. We do not recommend using STT software if the student is not already comfortable with using it. Instead, we recommend using a human scribe instead.</p>	<p>SCRIBE ACCOMMODATIONS OPTIONS FOR MATH: The student has a disability that affects their ability to write and they use a scribe or speech-to-text device or software to address this challenge during instruction throughout the day. There are four scribe and speech-to-text options available for students taking the computer-based or paper-based RICAS math test in either English or Spanish:</p> <ol style="list-style-type: none"> 1. HUMAN SCRIBE. A human scribe records the student's responses verbatim during testing directly into TestNav or into the student's answer booklet in either English or Spanish. <i>See Appendix J</i> of this manual for scribe guidelines for both English and Spanish math tests. <ul style="list-style-type: none"> • <i>Spanish Mathematics Tests:</i> Test administrators may not translate student responses into English if the student is taking the Spanish math test. • Test student individually in a separate setting. RICAS PNP Column AG (Human Scribe as Standard Accommodation [Mathematics]) 2. SPEECH-TO-TEXT DEVICE OR SOFTWARE. A speech-to-text device or software of the student's preference is set up on a separate computer and the student takes the paper-based test. PNP Column: AI (Speech-to-Text as a Standard Accommodation [math]). <i>See the SR/PNP Guide</i> for more information. 3. STUDENT DICTATES RESPONSES USING AAC. Student uses an external assistive/augmentative communications device (other than a smartphone) to dictate or generate responses under the direct supervision of a test administrator using one of these options: <ol style="list-style-type: none"> a. AUDIO RECORDING DEVICE. The student uses an external recording device (other than a smartphone) to record their responses to test items, then the responses are transcribed by

Test Support Name	Test	Student Status	Support Group	Embedded Support: <i>Available accommodations embedded in the online testing platform (TestNav, TIDE, WIDA AMS, and Kite Student Portal) for the computer-based editions of tests.</i>	External or Non-Embedded Support: <i>Available accommodations for the paper-based edition of the test or if test support will be provided outside of the test platform.</i>
					<p>either the student or the test administrator into the answer booklet (if taking the paper test) or into TestNav (if taking the computer-based test) while playing back recorded segment(s). Delete responses from the device once transcription is complete.</p> <p>RICAS PNP Column: Not Recorded</p> <p>b. VIDEO RECORDING DEVICE. Student who is deaf or hard-of-hearing uses a video to record their signed responses to test items, then the responses are transcribed by either the student or the test administrator into the answer booklet (if taking the paper test) or into TestNav (if taking the computer-based test) while playing back recorded segment(s). Delete any recorded responses from the device once transcription is complete.</p> <p>RICAS PNP Column: Not Recorded</p> <p>HOW TO SUBMIT STUDENT RESPONSES FOR SCORING: Use one of these options to submit student responses for scoring:</p> <p>TRANSCRIPTION. The test administrator transcribes the student's responses verbatim directly into TestNav at any time prior to the end of the testing window, in either English or Spanish, depending on the test the student takes.</p> <p>Spanish Math Tests: Test administrators may not translate the student's responses into English. Transcribe all responses into TestNav or the Spanish paper test booklet exactly as dictated, recorded, or typed by the student.</p> <p>TYPED RESPONSES. Print one response per page, and insert into the student's answer booklet with all required information on each page (<i>see appropriate appendix in the Test Administrator's Manual</i>). Transcription into the student answer booklet is not necessary. After printing, delete all responses from word processor or device.</p>

Test Support Name	Test	Student Status	Support Group	Embedded Support: Available accommodations embedded in the online testing platform (TestNav, TIDE, WIDA AMS, and Kite Student Portal) for the computer-based editions of tests.	External or Non-Embedded Support: Available accommodations for the paper-based edition of the test or if test support will be provided outside of the test platform.
					Spanish Math Tests: Test administrators may not translate the student's responses into English. Follow instructions above. RICAS PNP Column AK (Typed Responses) EMERGENCY ACCOMMODATION: See <i>Emergency Accommodations</i> .
Spell-checker for the ELA Test	RICAS	IEP/504 Only	Special Access Accommodation	SPELL-CHECKER. The student has a disability that affects their ability to spell and requires a spell-checking device or software. Students who receive this accommodation must meet the criteria below. Criteria: This accommodation is intended for a student who has a documented disability that severely limits or prevents them from spelling correctly, even after varied and repeated attempts to teach the student to do so, as documented by locally administered diagnostic evaluations. The student must meet <i>all</i> of the following criteria: <ul style="list-style-type: none"> • The student is virtually unable to spell simple words (i.e., at the beginning stages of learning how to spell); • The student produces understandable written work only when provided this accommodation, which the student uses during routine instruction; and • The student receives ongoing intervention to learn the skill. 	
				EMBEDDED SPELL-CHECKER: The student may use the embedded spell-checker in TestNav or an external spell-checking device for ELA. <i>See next column for information on using an external device.</i> RICAS PNP Column AM (Spell Checker)	EXTERNAL SPELL-CHECKER: The student will use an external spell-checking device for ELA. Grammar check and internet access must be turned off. RICAS PNP Column AM (Spell Checker)
Stay on track	PSAT10_SAT	IEP/504 Only	Accommodation	May be provided as a non-embedded support.	STAY ON TRACK. Teacher provides visual, auditory or physical cues to student to begin, maintain, or finish a task. Student cannot be cued to move on to the next question. SSD Online: Other CB TIDE: Set <i>Non-embedded accommodation</i> flag set to Yes.
Streamline Mode	PSAT10_SAT	IEP/504 Only	Accommodation	STREAMLINE MODE. This format rearranges the item onscreen so that the item stimuli are displayed above the item stem and the response options. NOTE: When magnification is 5x or above, streamline mode automatically turns on. CB TIDE: Streamline Mode	N/A

Test Support Name	Test	Student Status	Support Group	Embedded Support: <i>Available accommodations embedded in the online testing platform (TestNav, TIDE, WIDA AMS, and Kite Student Portal) for the computer-based editions of tests.</i>	External or Non-Embedded Support: <i>Available accommodations for the paper-based edition of the test or if test support will be provided outside of the test platform.</i>
	NGSA	Any Student	Accessibility Feature	STREAMLINE MODE. <i>This is an accessibility feature for NGSA.</i>	
Translation of General Test Directions	ACCESS	EL	Accommodation	<i>May be provided as a non-embedded support.</i>	TRANSLATION OF GENERAL TEST DIRECTIONS. For students who speak languages other than English and Spanish and require translated directions, the test administrator may translate general test directions. The test administrator must be fluent in reading and speaking the student's native language. ONLY the general test directions may be translated. Translating ANY part of the item stimulus, questions, reading passages, or response items is a test irregularity.
Word Prediction	NGSA	IEP/504 Only	Accommodation	WORD PREDICTION. <i>The NGSA Science test does not have constructed response test items, so while the student may have this accommodation in their IEP or 504 Plan, it may not be necessary for this assessment.</i>	
	PSAT10_SAT	IEP/504 Only	Accommodation	<p>(Updated for 2022) WORD PREDICTION.</p> <p>SAT. <i>The essay portion of the SAT is no longer part of the SAT for state assessments. The rest of the SAT does not so while the student may have this accommodation in their IEP or 504 Plan, it may not be necessary for this assessment.</i></p> <p>PSAT 10 <i>does not have constructed response or essay test items, so while the student may have this accommodation in their IEP or 504 Plan, it may not be necessary for this assessment.</i></p>	
Word Prediction	RICAS	IEP/504 Only	Special Access Accommodation	<p>WORD PREDICTION ON RICAS ELA TEST. This special access accommodation is only for students who meet at least one of the criteria in the next column.</p> <ul style="list-style-type: none"> • Web extensions are available to download for Co:Writer Universal and Read&Write. • Web extensions must be designated in the student's SR/PNP for Co:Writer or Read&Write. DO NOT ORDER THE AT TEST FORM FOR THIS ACCOMMODATION. • As with all technology, the student should use the practice test to familiarize themselves with the web extension. • Detailed instructions for accessing the web extensions are in the <i>RICAS Assistive Technology Guidelines</i>. (www.ride.ri.gov/accommodations) 	<p>WORD PREDICTION FOR THE ELA TEST. The student must use an external word prediction device that provides a bank of frequently or recently used words after the student keyboards the first few letters of a word.</p> <p>The student must meet all of the following criteria in order to receive this accommodation:</p> <ol style="list-style-type: none"> 1. have a disability or disabilities that severely limit or prevent them from recalling and processing language to write or keyboard written responses without the use of a word prediction device, application, or software; AND 2. can access written expression only through the use of word prediction software that they use routinely to generate written responses.

Test Support Name	Test	Student Status	Support Group	Embedded Support: <i>Available accommodations embedded in the online testing platform (TestNav, TIDE, WIDA AMS, and Kite Student Portal) for the computer-based editions of tests.</i>	External or Non-Embedded Support: <i>Available accommodations for the paper-based edition of the test or if test support will be provided outside of the test platform.</i>
					<p>A test administrator should facilitate the transfer of information from the external device or application to the answer booklet or onscreen. Written responses must either be transcribed by the student at the time of testing or be transcribed by an adult prior to the end of the testing window.</p> <p>NOTE: During testing, internet access must be turned off/restricted; and the “predict-ahead” and “predict online” functions must be turned off since these functions automatically select words for the student.</p> <p>RICAS PNP Column AN (Word Prediction)</p>

APPENDIX A: State Assessments by Grade

	<i>Alternate Assessments for Students with Significant Cognitive Disabilities</i>			<i>General Education Assessments</i>					
Grade Tested	<i>English language proficiency: Alt. ACCESS for ELLs</i>	<i>ELA and Mathematics: DLM</i>	<i>Science: DLM</i>	ACCESS 2.0 for ELs	NAEP	<i>Science: RI NGSA</i>	<i>ELA and Mathematics: RICAS</i>	<i>Reading and Mathematics: PSAT™10</i>	<i>Reading* and Mathematics SAT® School Day</i>
Kindergarten				K					
1	1			1					
2	2			2					
3	3	3		3			3		
4	4	4		4	4		4		
5	5	5	5	5		5	5		
6	6	6		6			6		
7	7	7		7			7		
8	8	8	8	8	8	8	8		
9	9			9					
10	10			10				10	
11	11	11	11	11		11			11
12	12			12	12				

*Beginning in April 2022, the essay portion of the SAT will not be included as part of the state assessment program.

APPENDIX B: Documentation of Accommodations for an EL Student

Sample Form (Optional)

Use this form to document the selection of **accessibility features and accommodations** for each EL student. Available accessibility features and accommodations are listed in the *RISAP Accommodations and Accessibility Manual (2021-22)*. This form should be completed within 60 days of the start of school year or student's date of enrollment, and must be **updated annually**. Accommodations decisions for EL students with disabilities must also be documented in the student's IEP or 504 plan.

Student Name: _____ **School Year:** _____

Grade: _____ **SASID:** _____

School: _____ **District:** _____

Name of staff and others who determined the test accommodations and features for the student:

Teacher(s) _____

Others (including student and/or parent) _____

If the **parent** and/or **student** were not part of the decision-making process, then they should be notified of the features and accommodations the student will receive on the tests.

Directions: Indicate the **accessibility features and accommodations** that will be provided to the student on each statewide assessment they will be taking.

Accessibility Feature or Accommodation Needed by the EL Student for Testing	Notes/Comments
(Continue on additional pages as needed.)	

APPENDIX C: Student Accommodation Refusal Form

Sample Form (Optional)

If a student refuses an accommodation listed in his or her IEP or 504 plan, the school should document in writing that the student refused the accommodation, and the accommodation must be offered and remain available to the student during testing.

This form can be completed and placed in the student's file, and a copy sent to the parents. IEP teams, 504 plan coordinators, and educators making accommodations decisions for ELs should consider this information when making future accommodations decisions for the student. Use of this form is encouraged, but not required.

Student Name: _____ Date: _____				
Grade: _____		SASID: _____		
School: _____				
District: _____				
Test (circle):	ACCESS for ELLs	ALT ACCESS for ELLs	DLM	RICAS
		NGSA	PSAT10	SAT
Test Administrator: _____				
Accommodation(s) refused by student _____				

Reason for refusal: _____				

Comments: _____				

Keep this form on file at the school. Do *not* submit this form with your school's test materials.

APPENDIX D: Unique Accommodation Form

Downloadable Form: Find an interactive copy of this form at www.ride.ri.gov/accommodation

Directions: To request approval for a unique accommodation, this form must be submitted to **RIDE by fax to 401-222-3605** by the principal or designee or District Testing Coordinator or designee, at least six weeks prior to testing to ensure a timely response from RIDE. **DO NOT EMAIL.**

DISTRICT/SCHOOL ASSURANCES: In submitting this form for approval, the principal/designee or assessment coordinator assures that:

- This accommodation will be documented in the student's IEP, 504 Plan, or EL plan. In the case of an IEP, the parent/guardian of the student must sign the amended IEP prior to testing.
- The school team has met and considered all listed accommodations before proposing this unique accommodation.

The proposed accommodation is used, as appropriate, for routine classroom instruction and assessment.

District Name:	DATE:
Name of Principal/Designee or District/LEA Testing Coordinator (please print):	
School Name:	
Telephone Number:	Fax Number:
Student Information:	
Student Name:	SASID:
Grade:	DOB:

Test(s) on which the student will use the accommodation (*PSAT10 and SAT requests must be submitted through the SSD Online Portal*):

- ☐ ACCESS for ELLs ☐ ALT ACCESS for ELLs ☐ RICAS (Subject Area: _____) ☐ RI NGSA
☐ DLM (Subject Area: _____)

Describe the accommodation in detail:

How is this accommodation used during instruction, classroom assessments, or on other assessments:

What equipment, staff, space, or additional accommodations will be needed in order to administer this accommodation?

FOR RIDE USE ONLY: ☐ This accommodation is APPROVED ☐ This accommodation is DENIED

RIDE Staff Name and Position: _____

Signature: _____ Date: _____

NOTES:

APPENDIX E: Emergency Accommodation Form

Downloadable Form: Find an interactive copy of this form at www.ride.ri.gov/accommodation

Use this form in cases where a student needs a new accommodation immediately prior to the assessment due to unforeseen circumstances. This may include a student who has recently fractured a limb (e.g., fingers, hand, arm, wrist, or shoulder); whose only pair of eyeglasses broke; or they are returning from a serious or prolonged illness or injury.

Directions: If the principal (or designee) determines the student requires an emergency accommodation, complete this form and submit to the district testing director so it can be retained in the student's file. Notify the parent that an emergency accommodation will be used during testing. Do not submit this form to RIDE.

District/LEA Name:	Date:
School Name:	Telephone Number:
Student Name:	Grade:
SASID:	DOB:
Test (ACCESS, DLM, RICAS, NGSA)*:	Content Area:

Which accommodation(s) will be used? _____

Reason for needing an emergency test accommodation: _____

Who will administer the accommodation? _____

Staff Member's Name (please print)

Title/Position

Principal's Signature

Date

* Submit emergency accommodations requests for PSAT 10 and SAT through SSD Online.

APPENDIX F: SAT and PSAT 10 Questionnaire for Extended Time, Reader, Scribe, and Breaks

Downloadable Form: Find an interactive copy of this form at www.ride.ri.gov/accommodation

APPENDIX G: Providing the Sign Language Accommodation

Although it is understood that the nature of this accommodation requires individualized delivery in the communication method familiar to the student, individuals providing the sign language accommodation for the ACCESS, PSAT 10, SAT, NGSA, RICAS, and DLM assessments must follow these procedures during testing to ensure standardization of delivery.

Procedures for Providing the Sign Language Accommodation

- Signers must be trained on test administration policies as indicated in this document and as provided during online or in-person training opportunities provided by the district or school.
- Individuals providing the sign language accommodation must sign the security agreement.
- Signers should use signs that are conceptually accurate, with or without simultaneous voicing, translating only the content that is presented, without changing, emphasizing, or adding information. Signers may not clarify (except for test directions), provide additional information, assist, or influence the student's selection of a response in any way. Signers must do their best to use the same signs if the student requests a portion repeated.
- Signers must sign (or sign and speak when using Sim-Com [Simultaneous Communication]) in a clear and consistent manner throughout the test administration, using correct pronunciation, and without inflections that may provide clues to, or mislead, a student.
- Signers should emphasize only the words printed in boldface, italics, or capital letters and inform the student that the words are printed that way. No other emphasis or inflection is permitted.
- Signers may repeat passages, test items, and answer options as requested, according to the needs of the student. Signers should not rush through the test and should ask the student if they are ready to move to the next item.
- Signers may not attempt to solve problems or determine the correct answer to a test item while signing, as this may result in pauses or changes in inflection that may mislead the student.
- Signers must use facial expressions consistent with sign language delivery and must not use expressions that may be interpreted by the student as approval or disapproval of the student's answers.
- Test Administrators must be familiar with the student's IEP and should know in advance which accommodations are required by the student. Test Administrators must be aware of whether a student requires additional tools, devices, or adaptive equipment that has been approved for use during the test, such as a magnifier, closed circuit television (CCTV), abacus, brailier, slate, stylus, etc., and if use of these tools impacts the translation of the test, the signer should be aware of this.
- Upon review of the test, if a human signer is unsure how to sign and/or pronounce an unfamiliar word, the signer should collaborate with a content expert who is fluent in sign language (if available) to determine which sign is most appropriate to use. If the signer is unable to obtain this information before the test, the signer should advise the student of the uncertainty and spell the word.
- When using a sign that can represent more than one concept or English word, the signer must adequately contextualize the word in order to reduce ambiguity. The signer may also spell the word after signing it if there is any doubt about which word is intended.
- Signers must spell any words requested by the student during the test administration.
- **NGSA and RICAS Math Only:** When test items refer to a particular part of the text, the signer must re-sign the lines before signing the question and answer options. For example, the signer should sign, "Question X refers to the following part [paragraph]...", then sign that part to the student, followed by question X and the answer options.

- **RICAS ELA Only:** When test items refer to a particular part of a passage, **the signer cannot sign any part of the passage.** The signer can sign line or stanza numbers for passages before signing the question and answer options. For example, the signer should sign, “Question X refers to the following lines [paragraph]...,” then sign the line or passage numbers, followed by question X and the answer options.
- When signing selected-response items, signers must be careful to give equal emphasis to each answer option and to sign all answer options before waiting for the student’s response.
- When answer options will be scribed, the signer should inform the student at the beginning of the test that if the student designates a response choice by letter only (“B,” for example), the signer will ask the student if they would like the response to be signed again before the answer is recorded.
- If the student chooses an answer before the signer has signed all the answer options, the human signer must ask if the student wants the other answer options to be signed.
- After the signer finishes signing a test item and all answer options, the signer must allow the student to pause before responding. If the pause has been lengthy, the signer should ask: “Do you want me to sign the question or any part of it again?” When signing questions again, signers must avoid emphasizing words not bolded, italicized, or capitalized.

Sign-System-Specific Procedures

Signers must deliver the accommodation in the language or communication mode used by the student according to the student’s IEP.

American Sign Language (ASL)

Signers delivering the accommodation via ASL must use appropriate ASL features (including signs, sentence structure, non-manual markers, classifiers, etc.) while protecting the construct being measured by the assessment. The signer must be careful not to cue the student.

English-Based Sign Systems (PSE, Sim-Com, etc.)

Signers delivering the accommodation via an English-based signing system (PSE, Sim-Com, etc.) must use the features of the communication mode used by the student. Signers delivering the test in English-based signing systems should use the rules of those signing systems (conceptually accurate signs, English word order, etc.), with or without simultaneous voicing.

APPENDIX H: RICAS Calculator Policy

The calculator types available to students on the RICAS mathematics tests for the computer- and paper-based tests are shown in the table below. Please keep the following in mind:

- Any 7th or 8th grade student may use one of the handheld calculators listed instead of the calculator embedded in TestNav. No accommodation is necessary if used on the calculator section of the test.
- At a minimum, 7th and 8th grade students should have access to a 5-function calculator.
- **Non-calculator sessions of any RICAS math test:** unless a student meets the criteria for receiving a calculator or other calculation tool during a non-calculator section of the test, no calculators are provided in TestNav and no handheld calculators should be made available.

Grade	Calculators Provided in TestNav	Allowable Handheld Calculators (computer- and paper-based tests)
3	None	None
4	None	None
5	None	None
6	None	None
7	5-function	5-function Scientific Graphing
8	Scientific	5-function Scientific Graphing

APPENDIX I: PSAT 10 and SAT Calculator Policy

Acceptable calculators for the mathematics tests:

- all scientific calculators
- all four-function calculators. Four-function calculators can be used by students but are not recommended due to the level of mathematics being assessed on the PSAT 10 and SAT.
- the following graphing calculators. If a graphing calculator is not listed below, as long as it meets the criteria under Unacceptable Calculators, it can be used during testing.

CASIO

FX-6000 series
FX-6200 series
FX-6300 series
FX-6500 series
FX-7000 series
FX-7300 series
FX-7400 series
FX-7500 series
FX-7700 series
FX-7800 series
FX-8000 series
FX-8500 series
FX-8700 series
FX-8800 series
FX-9700 series
FX-9800 series
FX-9860 series
CFX-9800 series
CFX-9850 series
CFX-9950 series
CFX-9970 series
FX 1.0 series
Algebra FX 2.0 series
FX-CG-10

HEWLETT-PACKARD

HP-9G
HP-28 series
HP-38G
HP-39 series
HP-40 series
HP-49 series
HP-50 series
HP Prime

SHARP

EL-5200
EL-9200 series
EL-9300 series
EL-9600 series (use of stylus is not permitted)
EL-9900 series

RADIO SHACK

EC-4033
EC-4034
EC-4037

OTHER

Dataexx DS-883
Micronta
NumWorks
Smart²

TEXAS INSTRUMENTS

TI-73
TI-80
TI-81
TI-82
TI-83/TI-83 Plus
TI-83 Plus Silver
TI-84 Plus
TI-84 Plus CE
TI-84 Plus Silver
TI-84 Plus C Silver
TI-84 Plus CE-T
TI-84 Plus T
TI-85
TI-86
TI-89
TI-89 Titanium
TI-Nspire
TI-Nspire CX
TI-Nspire CM-C
TI-Nspire CAS
TI-Nspire CX CAS
TI-Nspire CM-C CAS
TI-NspireCX-C CAS

Unacceptable Calculators

Students may not use:

- computers or tablets not used for testing, cell phones, smartphones, smartwatches, or wearable technology
- Calculators that can access the internet or that have wireless, Bluetooth, cellular, audio/visual recording and playing, camera, or any other smartphone-type features
- Calculators that have a QWERTY keypad, pen/stylus, or touchpad input. The calculator may be approved without the use of a stylus.

APPENDIX J: Scribe Guidelines

A scribe is an adult who writes down what a student dictates in a variety of ways (e.g., speech, American Sign Language (ASL), braille, assistive communication device). The guiding principle in scribing is to ensure that the student has access to and is able to respond to test content.

Qualifications for Scribes

- The scribe should be familiar with the student, such as the teacher or teaching assistant who is typically responsible for scribing during educational instruction and assessments.
- Scribes must meet the criteria outlined in the Rhode Island Test Coordinator Handbook.
- Scribes must have completed all training for administering the test, including security policies and procedures outlined in the selected test's test administrator manual.

Preparation for Scribes

- Scribes should read and sign a test security/confidentiality agreement prior to test administration.
- Scribes are expected to familiarize themselves with the test format in advance of the scribing session. Having a working familiarity with the test environment will help facilitate the scribe's ability to record the student's answers. Scribes may wish to review the practice test to become familiar with the assessment.
- Scribes should be familiar with the Individualized Education Program (IEP) or 504 plan if the student for whom they are scribing has a disability, so that there are plans in place for providing all needed designated supports and accommodations.
- Scribes should also have a strong working knowledge of the embedded and non-embedded universal tools, designated supports, and accommodations available on the test.
- Scribes should review the guidelines and procedures they will use during testing with the student at least one to two days prior to the test event.
- Scribes should practice the scribing process with the student at least once prior to testing.

General Scribe Guidelines

- This accommodation should be administered in a separate location, in a one-on-one setting.
- Scribes should answer all procedural questions asked by the student (e.g., test directions, navigation within the test environment).
- Scribes are expected to comply with student requests regarding use of all available features within the test environment.
- For computer-based administrations, scribes must enter student responses directly into the test interface exactly as the student dictates.
- Scribes may not respond to student questions about test items if their responses compromise validity of the test. The student must not be prompted, reminded, or otherwise assisted in formulating his or her response during or after the dictation to the scribe.
- Scribes may ask the student to restate words or parts as needed. Scribes may not suggest or hint or otherwise communicate to the student that they should make a change or correction to their answer.
- Scribes may not question or correct student choices, alert students to errors or mistakes, prompt or influence students in any way that might compromise the integrity of student responses. A scribe may not edit or alter student work in any way and must record exactly what the student has dictated.
- Students must be allowed to review and edit what the scribe has written. If necessary, the student can request the scribe to read aloud the completed text before final approval.
- For scribes working with students using ASL or other sign system, all ASL guidelines must be followed and the scribe must either be proficient in ASL or working with an ASL interpreter.

RICAS ELA Scribe Guidelines

A human scribe or speech-to-text are accommodations that allow students to provide their responses orally to a test administrator who will write or keyboard the responses directly onscreen (or into the student's test booklet). Students who receive this accommodation may respond to test questions either through:

- verbal dictation to a human scribe
- a speech-to-text device or other augmentative/assistive communication device (e.g., picture/word board)
- signing (e.g., American Sign Language, signed English, Cued Speech),
- gesturing or pointing
- eye-gazing

Clarification on the **role of a scribe** for the ELA test:

- The test must be administered individually in a separate setting.
- The scribe may enter student responses either onscreen (computer-based test) or in the student's answer booklet (paper-based test) at the time of testing. Test administrators who review the test will be asked to sign non-disclosure agreements.
- The scribe must write exactly what the student dictates. The scribe may not edit or alter the student's dictation in any way. When scribing, the scribe may assume that each sentence begins with an upper-case letter and ends with a period. All other capitalization, punctuation, and paragraph breaks are the responsibility of the student.
- After the student has finished dictating his or her response(s), the scribe must ask the student to review the draft and make any necessary edits, including capitalization, punctuation, spelling, and paragraph breaks.
- The student may make edits independently or may direct the scribe to make the edits.
- The scribe must not assist the student in making decisions during the editing process.

Guidelines for Transcribing Student Responses

Circumstances may occur during test administration that may require a test administrator to **transcribe** a student's responses into a combined test and answer booklet, answer booklet, or onscreen. Transcribing responses by a test administrator may occur at any time until the end of the test window under secure conditions supervised by the principal (or designee). These situations may include:

- answers recorded in the wrong section of, or in an incorrect, combined test & answer booklet, answer booklet, or computer-based test.
- a student took the test using a special test format requiring that answers be transcribed; e.g., Braille, large print. (Braille responses must be transcribed by persons fluent in Braille.)
- a student uses speech-to-text software, or augmentative communication, or an assistive technology device and prints responses for transcription by a test administrator.
- A student recorded answers on blank paper, instead of in the required combined test & answer booklet, answer booklet of computer-based test, as an accommodation.
- The combined test & answer booklet or document becomes unusable; e.g., torn, wrinkled, or contaminated.

In cases where a student's responses must be transcribed *after* test administration is completed, the following steps must be followed:

- at least two persons must be present during any transcription of a student's responses. At least one

of the individuals must be an authorized test administrator; the other a principal or designee.

- the student's response must be transcribed verbatim into the combined test & answer booklet (or separate answer booklet for legacy tests) or computer-based test.
- the student's original printed responses must either be securely shredded or returned with the school's nonscorable materials.

NGSA Scribe Guidelines

For scribes working with students using Braille:

- In addition to the scribe guidance on page 102, the scribe should be proficient in reading (visually or tactually) braille in UEB and Nemeth.
- The scribe should enter the responses in the paper test booklet or online exactly as the student has brailled.
- The scribe may ask for the student to read back brailled responses for clarification if the brailled response is difficult to read due to student corrections.
- Students may review the written or typed response on paper or on the computer screen by either using the scribe to read back the entered response or using assistive technology. Students may indicate any changes or revisions to the scribe.
- When the student has finished testing (the end of the test session), the scribe will immediately collect all scratch paper and rough drafts, and:
 - **(if online)** at the direction of the student, will submit the student's responses through the TDS. The scribe will then collect the login ticket, and deliver all collected materials to the Test Administrator and confirm the student's test has been submitted.
 - **(if paper booklet)** deliver the paper booklet and all other collected materials to the Test Administrator. The Test Administrator will then need to login to the Data Entry Interface (DEI) to transfer the student's responses from the paper booklet exactly as indicated by the student into the DEI before the end of the testing window when the Test Coordinator ships all completed booklets. See Appendix C of the *RI NGSA Test Coordinator Manual* for guidance on using the DEI.

For scribes working with students taking the online test in Spanish:

- In addition to the general scribe qualifications, preparation, and guidelines above, the scribe should be proficient in reading, writing, and speaking Spanish.
- Students will need the following settings in the TIDE/TDS before testing: Spanish version (embedded), scribe (non-embedded), 1:1 administration (non-embedded).
- The scribe should enter the responses in the Test Delivery System (through the student's login) exactly as the student indicates.
- When the student has finished testing (the end of the test session), at the direction of the student, the scribe will submit the student's responses in the TDS. The scribe will then immediately collect all scratch paper and the login ticket and deliver those to the Test Administrator (or Test Coordinator, if the scribe is administering the test to this student).

For scribes working with students taking the test in Spanish using "print-on-demand" (i.e., paper edition Spanish version) in regular font size or large print:

- In addition to the general scribe qualifications, preparation, and guidelines above, the scribe (test administrator) should be proficient in reading, writing, and speaking Spanish.

- Students will need the following settings in the TIDE/TDS before testing: Print-On-Demand (embedded), Spanish version (embedded), Text magnification (if large print), scribe (non-embedded), 1:1 administration (non-embedded).
- **Technology needed:** separate computer for the Test Administrator to approve the print requests for each item (see the *RI NGSA Test Administrator Manual*, page 71); printer to print the items for the student. These are secure items so the printer must be in the same room as the test is administered.
- Once the student has logged into the TDS and begun testing, the student (or scribe/Test Administrator) will have the ability print items from the test. There are two ways: selecting the “Print Item” option from the Context menu for that item, or selecting “Print Page” and “Print Stimuli” from the Global Menu (see the *Guide to the Student Interface of the TDS*). Once the print request has been generated, the Test Administrator will need to approve the request in TIDE and submit the item to the printer (see the *RI NGSA Test Administrator Manual*, page 71).
- Printed items, like paper test booklets, are considered secure materials. As such, keep track of all printed items both for security purposes and to reduce duplicate prints if a student wants to return to a particular item in that session for review (e.g., use paper clips to combine stimuli with their items, organize in order of the test for easier reference).
- The scribe should enter the student’s responses into the TDS exactly as indicated by the student.
- When the student has finished testing (the end of the test session), at the direction of the student, the scribe will submit the student’s responses in the TDS. The scribe will then immediately collect all printed items, scratch paper, and the login ticket and deliver those to the Test Administrator (or Test Coordinator, if the scribe is administering the test to the student). Printed items must be shredded immediately as they are secure materials and will not be shipped with the paper test booklets.

APPENDIX K: RICAS and NGSA Read Aloud (Human Reader) Guidelines

When a student cannot access text-to-speech and instead requires a human reader, or *test reader*, the following guidelines will help the test reader prepare to administer the test. Because the student depends on the test reader to read the test questions accurately, pronounce words correctly, and speak in a clear voice throughout the test, the person providing the read aloud must meet the qualifications and follow the guidelines below.

Qualifications for Test Readers:

- The test reader should be an adult who is familiar with the student, and who is typically responsible for providing this support during educational instruction and assessments.
- Test readers must meet qualifications for test administrators found in the RISAP Test Coordinator Manual.
- Test readers must be familiar with the terminology and symbols used on the NGSA test.
- *For Spanish RICAS Math and NGSA Science Tests:* Test readers must be fluent in reading, writing, and speaking Spanish.

Requirements:

- Test readers must read and sign a test security agreement prior to test administration.
- Test readers must familiarize themselves with the test and participate in any online and/or in-person training sessions held by the district, school, or provided online before the testing session.
- Test readers must be familiar with the read aloud and any other accommodations or test supports required by the student.
- It is important to practice with a student prior to testing so that both the student and the test reader are familiar with the process.

Guidelines for Administering Human Read Alouds:

- **Read aloud of the RICAS ELA test:** Make sure the student meets the criteria to receive this read aloud before administering the test. If you have questions, consult with your district special education director.
- Read alouds must be conducted in a separate setting, either individually or in a group of 2-5 students.
- Read each question exactly as written as clearly as possible.
- Adjust your reading speed and volume as requested by the student and maintain a neutral tone, facial expression, and posture.
- Avoid gesturing, head movements, and verbal or non-verbal emphasis on words not otherwise emphasized in text.
- Do not discuss the test questions with the student. This is a violation of test security; respond to the student's questions by repeating the item, words, or instructions verbatim as needed.
- Do not paraphrase, interpret, define, or translate any items or words. This is a violation of test security. EL students requiring translations of items or words may use a word-to-word dictionary or glossary.

Language Usage/Conventions

- Read all text as punctuated.
- Quotation marks should be verbalized as "quote" and "end quote" at the beginning and end of quoted material, respectively.
- **For students with visual impairments.** For words printed in boldface, italics, underlined, or capitals, tell the student the words are printed that way. Do not emphasize words not already emphasized in print. Emphasis is appropriate when italics, underlining, or bold is used in the prompt, question, or answers.

Diagrams/Pictures/Maps for Students who are Visually Impaired

- Describe the diagram, picture, or map as concisely as possible following a logical progression. Focus on providing necessary information and ignoring the superfluous. Use grade-appropriate language when describing the image/graphic.

- Read the title or caption, if available.
- Any text that appears in the body of an image may be read to a student. Read text in images in the order most suited for the student's needs. Often the reader moves top to bottom, left to right, in a clockwise direction, or general to specific in accordance with teaching practices.

Graphs/Tables/Keys for Students who are Visually Impaired

- Read the title of the graph, table, or key first.
- Read the label and numbers on each axis second, referring to the horizontal axis at the bottom and vertical axis as the left side of the graph.
- For data tables, first read the title of the data table. If the data table has two or more columns, read as follows:
 - The heading of the left column is...
 - The heading of the right column is...
 - The data from left to right are as follows:
 - row one:
 - row two:
 - row three:
- Test readers must read scientific equations and symbols with technical accuracy and according to the charts on the following pages.

Description	Example(s)	Read As:
Large whole numbers	603,407,981 45,000,689,112	“six hundred and three million, four hundred and seven thousand, nine hundred eighty one” “forty-five billion, six hundred eighty-nine thousand, one hundred twelve”
Decimal numbers	0.056 4.37	“zero point zero five six” “four point three seven”
Fractions	$\frac{1}{2}, \frac{1}{4}, \frac{2}{3}$ $\frac{14}{25}$ $\frac{487}{6972}$	“one half, one fourth, two thirds, four fifths” Other common fractions include “sixths, eighths, tenths” “fourteen over twenty-five” “four hundred eighty-seven over six thousand, nine hundred and seventy-two”
Mixed numbers	$3\frac{1}{2}$ $57\frac{3}{4}$	read with “and” between whole number and fraction “three and one-half” “fifty-seven and three fourths”
Percent	62% 7.5% 0.23%	“sixty-two percent” “seven point five percent” “zero point two three percent”
Money	\$4.98 \$0.33 \$5,368.00	“four dollars and ninety-eight cents” “thirty three cents” “five thousand, three hundred and sixty-eight dollars” NOTE: if contains a decimal point, read as “dollars AND cents”
Negative numbers • do NOT read negative sign as “minus”	- 3 $-\frac{5}{8}$ -7.56	“negative three” “negative five eighths” “negative seven point five six”
Dates (years)	1987 2005	“nineteen eighty-seven” “two thousand five”
Roman Numerals	I II III IV	“one” “two” “three” “four”
Ratios	$x:y$	“x to y”
Addition	$13 + 27 =$	“thirteen plus twenty-seven equals”
Subtraction	$487 - 159 =$	“four eight seven minus one five nine equals”
Multiplication	$63 \times 49 =$ $63 \times 49 = ?$	“sixty-three times forty-nine equals” “sixty-three times forty-nine equals question mark”

Division (<i>vertical or horizontal</i>)	$\frac{120}{15} = 8$	"one hundred twenty divided by fifteen equals eight"
Expressions or Formulas containing variables NOTE: any letter may be used as a variable.	$N + 4$ $8x - 3$ $4(y - 2) + 5 = 7$ $V = 4\frac{r^3}{3}$ $x^2y^3 = -36$ $156x \geq 4$	<p>"'N' plus four"</p> <p>"eight 'x' minus three"</p> <p>"four open parenthesis 'y' minus two close parenthesis plus five equals seven"</p> <p>"Capitol 'V' equals four-thirds pi 'r' cubed"</p> <p>"'x' squared 'y' cubed equals negative thirty-six" <i>or</i></p> <p>"'x' to the second power times 'y' to the third power equals negative thirty-six"</p> <p>"one hundred fifty-six 'x' is greater than or equal to four"</p>
Coordinate Pairs	the point (-1, 2)	"the point (pause) negative one comma two"
Exponents	2^2 6^{-5} $3^{2.5}$ 2^x	<p>"two squared"</p> <p>"six to the negative fifth power"</p> <p>"three to the two point five power"</p> <p>"2 to the x power"</p>
Less Than	$<$ \leq	<p>"is less than"</p> <p>"is less than or equal to"</p>
Greater Than	$>$ \geq	<p>"is greater than"</p> <p>"is greater than or equal to"</p>
Similar To	\sim	"is similar to"
Plus or Positive	$+$	"plus" or "positive" depending on the context of the item.
Negative/Minus	$-$ -4°C -20°F -22°K	<p>"minus"</p> <p>"negative four degrees Celsius"</p> <p>"negative twenty degrees Fahrenheit"</p> <p>"negative twenty-two degrees Kelvin"</p>
Pi	Π	"pi"
Theta	θ	"Theta"
Alpha	α	"Alpha"
Percent	$\%$	"percent"
Formulas	$p = \frac{m}{V}$	<p>Read letters and numbers of scientific formulas exactly as they are printed; do not substitute the words that the letters represent.</p> <p>"p is equal to m divided by capitol V"</p>
Scientific Units	3m 9.8 m/s^2	<p>Abbreviated units should be described using the full word(s).</p> <p>"three meters"</p> <p>"nine point eight meters per second squared"</p>

Chemical Symbols	Sodium sulfate (Na ₂ SO ₄)	<p>Elements and formulas should be read in a way that does not cue the correct answer or provide a hint to the student.</p> <p>If the item includes both the name and symbol of an element or formula of a compound, the symbol/formula may be read as the name in later instances within the test question: "sodium sulfate [pause] parentheses N-A two, S-O four parenthesis"</p>
	Cl ²	<p>If only the symbol/formula appears within the test question, only the symbol/formula should be read: "C-L two" <i>not</i> "Chlorine" or "Chlorine gas"</p>

APPENDIX L: NGSA Simplified Test Directions Guidelines

Students with difficulties in auditory processing, short-term memory, attention, or decoding may benefit from having test directions simplified for them. This designated support may require testing in a separate setting to avoid distracting other test takers. This support is intended to ensure that students understand the directions for the test. **Only the script in the TAM may be simplified. Test content, including test items, stimulus material or passages, individual words from items, or instructions for individual items may NOT be simplified or paraphrased.**

Simplifying test directions should be consistent with classroom instruction and includes repeating or rephrasing.

Qualifications for Test Administrators Who Simplify Test Directions

Any test administrator who provides this test support on the NGSA should be:

- familiar with the student. Typically, the test administrator or teacher is responsible for providing this support during educational instruction and assessments.
- trained in administering the NGSA through online trainings and/or in-person training sessions held by the district or school in accordance with NGSA guidelines and policies.
- meet all criteria for being a test administrator as outlined in the *NGSA Test Coordinator Handbook* (www.ride.ri.gov/assessment-manuals)
- sign and abide by all requirements in the Test Security Agreement.

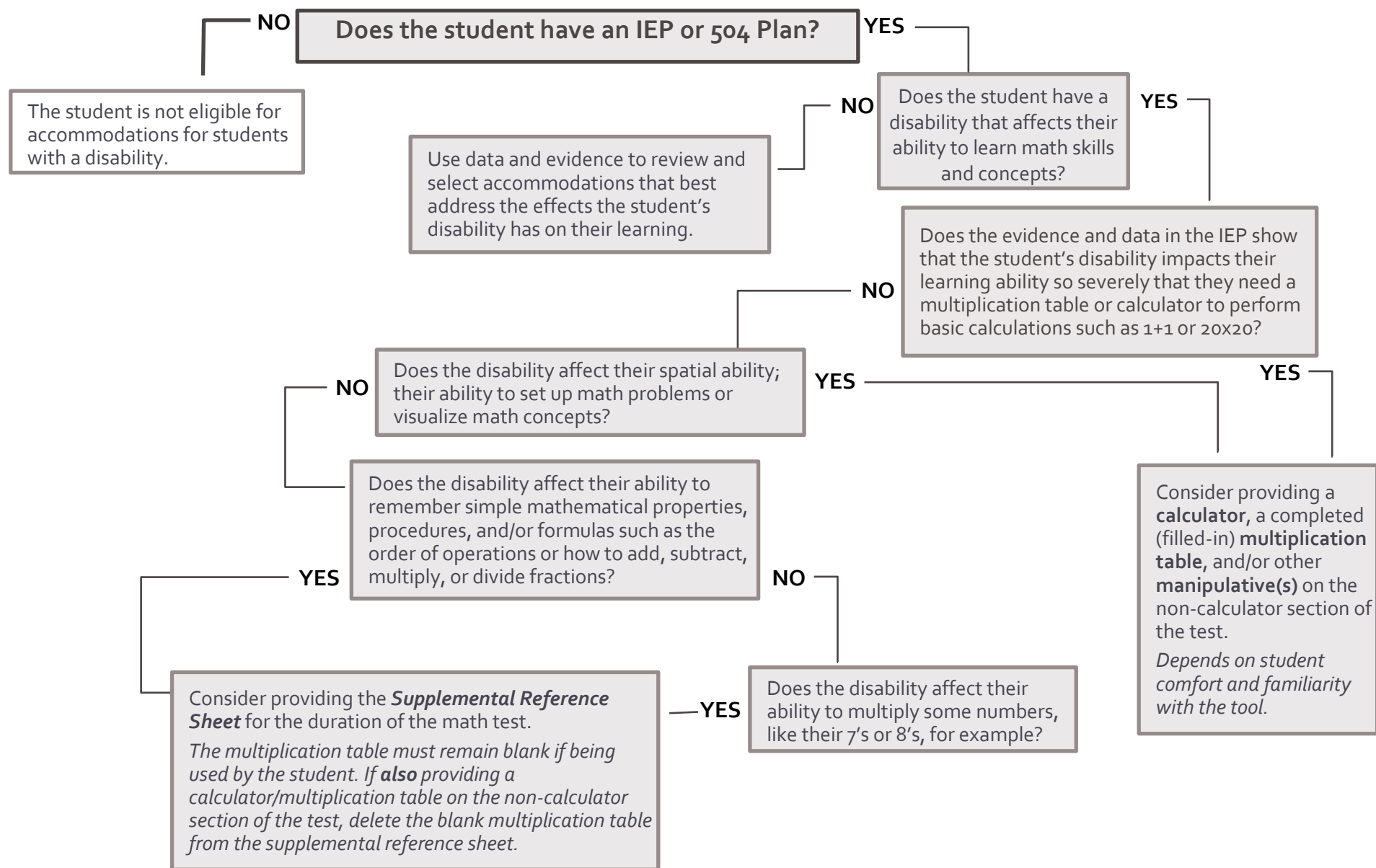
Procedures for Administering Simplified Test Directions:

- The test administrator must familiarize themselves with the testing environment and format before testing.
- The test administrator must be familiar with the student's needs, including any additional test supports, materials, or assistive technology the student may require.
- The test administrator may only simplify the script within the SAY boxes in the Test Administration Manual (TAM). **Test items, stimulus material or passages, individual words from items, or instructions for individual items may NOT be simplified or paraphrased.**
- The test administrator must be familiar with the vocabulary used in the directions.
- The test administrator must speak clearly and at a normal pace with clear pronunciation.
- The test administrator may break directions into parts or segments or using similar words or phrases.
- The test administrator may paraphrase, clarify, or simplify test directions.
- The test administrator may spell any words in the script if requested by the student.
- The test administrator may adjust their reading speed and volume as requested by the student.
- The test administrator may not prompt the student in any way that could affect their response to a test item.
- The test administrator may only read the test items aloud if the student is receiving that test support. If so, test administrators must also adhere to the *NGSA Guidelines for Read Aloud*.

NGSA: Examples of Simplified Test Directions

Full Log-in Directions	Simplified Log-in Directions
<p>Now we are ready to log in. Once you have logged in, you will have to wait for me to approve the test before you start. I'll be checking that you have correctly entered the test session ID and other information.</p> <p>Enter your legal first name, not your nickname, followed by your SASID or SSID number. Then enter the test session ID. Raise your hand if you need help typing this information on your keyboard.</p>	<p>Now we are ready to log in. Enter your legal first name, not your nickname, followed by your SASID or SSID number. Then enter the test session ID.</p>
<p>Now click "Sign In." Once you have successfully logged in, you will see a screen with your first name and other information about you. If all of the information on your screen is correct, select YES to continue. If any of the information is incorrect, please raise your hand and show me what is incorrect.</p>	<p>Now click "Sign In." Make sure that your personal information on the next screen is correct and click YES to continue. If it is not correct, raise your hand.</p>
<p>On the next screen, select the [INSERT NAME OF TEST]. After you have selected your test, you will see a screen with a moving bar and message saying that you are waiting for Test Administrator approval.</p> <p>Please wait quietly while I verify each of your tests.</p>	<p>On the next screen, select the [INSERT NAME OF TEST]. Then wait.</p>
<p>After I approve you to begin testing, you will see a screen asking you to check your test content area and settings. If all the information is correct, you may select YES, START MY TEST. If any of it is incorrect, please raise your hand.</p> <p>Before your test appears, you will see a tutorial page listing the test tools and buttons that you may use during the test or that will appear on the test. Please read this carefully. You can also find this information during your test by clicking the HELP button in the top right corner.</p>	<p>After I approve you to begin testing, make sure that you have the right test and settings. If any of the test information is incorrect, please raise your hand. If the information is correct, click YES, START MY TEST.</p>
<p>When you are ready to begin your test, click BEGIN TEST NOW at the bottom of the page.</p>	<p>When you are ready to begin your test, click BEGIN TEST NOW at the bottom of the page.</p>

APPENDIX M: RICAS Calculator, Mathematics Tools, and Supplemental Reference Decision Tree



Index

Able to move, stand, pace	25
Accessibility Features	1, 2
EL Students	22
Accommodations	
Monitoring Selection of Accommodations	18
Purpose of accommodations	18
Selecting and evaluating accommodations	19
Adaptive or Specialized Furniture	2, 25
Amending IEPs or 504 Plans	19
American Sign Language (ASL)	54
Answer Eliminator	2
Answer Masking	2, 3, 25
DLM	2
PSAT 10 and SAT	25
AT/AAC Devices	3, 25, 26
Assistive Technology	3
Braille	29
Auditory Supports	4, 27
ACCESS	4
DLM	4
NGSA	4
PSAT 10 and SAT	27
RICAS	4
Bilingual Word-to-Word Dictionary or Glossary	28
PSAT 10 and SAT	28
RICAS	28
Braille Display	26, 29, 30
Braille Edition	27, 28, 29
contracted	29
Refreshable Braille	29, 51
Tactile Graphics	27
Braille Writer	29
NGSA	30
PSAT 10 and SAT	30
RICAS	30
Breaks	5, 30
Breaks as Needed	6
Extended Breaks	6
Extra Breaks	6
Permission for Food/Medication	30
Permission to Test Blood Sugar (SAT and PSAT 10)	30
PSAT 10 and SAT Questionnaire	73
Short Segments	5
Calculators	6, 31, 32, 77
DLM	31, 32
Four-function	6
Four-function (SAT and PSAT 10)	31
graphing calculators	6
PSAT 10 and SAT Calculator Policy	77
Color Contrast	6
DLM	34
PSAT 10 and SAT	34
Computer	
For SAT Writing/Essay	34
Concentration Aids	35
Eligibility for Accommodations	19
Emergency Accommodation	7, 35, 63
ACCESS, DLM, RICAS, NGSA, PSAT 10, SAT	35
Form	72
Expandable Passages	7
Extended Time	35

English Learners (PSAT 10 and SAT)	36
PSAT 10 and SAT	36
PSAT 10 and SAT Questionnaire	73
Familiar Test Administrator	8
Graphic Organizer	
RICAS	37
Highlighter	8
Home or Hospital	
ACCESS	53
PSAT 10 and SAT	53
Human Read Aloud	<i>See Read Aloud</i>
Human Reader	
ACCESS	47
SAT and PSAT 10	49
Incorrect Accommodation	19
Amending IEPs or 504 Plans	19
Updating IEPs and 504 Plans	19
JAWS	26, 29, 30, 51, 52
Large-Print Edition	
ACCESS	37
Alternate Form - Visual Impairment (DLM)	38
DLM	38
RICAS	39
SAT and PSAT 10	38
Spanish (RICAS Math)	39
Line Reader	8
Line Guide	8
Tracking Tool	8
Magnification	
Large-Print Edition	9, 37, 38, 39, 40
Large-Print Edition (SAT and PSAT 10)	38
Magnification Device	9
Magnifier Tool	9, 38, 39
Paper Edition	9
Zoom	9, 40
Manipulatives	
DLM	31
Mark for Review	10
Mathematics Only	41
Mathematics Only	41
Mathematics Tools	<i>See Calculators</i>
Microphone	3, <i>See AT/AAC Devices</i>
Monitor placement of responses	
ACCESS, NGSA, PSAT 10, SAT, RICAS	42
Mouse Pointer	10, 42
PSAT 10 and SAT	42
Notepad or Scratch Paper	11, 42
NVDA	26, 29, 30, 51, 52
One-to-One Administration	11
PSAT 10 and SAT	43
Paper-Based Edition	
ACCESS	43
DLM	43
NGSA	43
PSAT 10 and SAT	44
RICAS	44
Spanish (NGSA)	58
Spanish (PSAT 10 and SAT)	58
Spanish (RICAS Math)	44
Transcription	52
Participation Requirements	16

EL Students	17	Human Signer (RICAS ELA).....	56
English Learners, First-Year ELs.....	17	Human Signer (RICAS)	55
Students with Disabilities.....	16	Interpreter for Test Questions.....	54, 55
Preferential Seating	12	Interpreter for Test Questions (PSAT 10 and SAT)	55
PSAT 10 and SAT	45	Simplified Test Directions	57, 87
Specific Seating	12	Small Group Administration	14
Read Aloud	12	ACCESS.....	
Human Read Aloud (DLM)	48	Spanish Edition	
Human Read Aloud (NGSA)	48	NGSA	58
Human Read Aloud (RICAS ELA)	49	RICAS Math.....	58
Human Reader (ACCESS)	47	Special Access Accommodations	1, 20, 21, 49, 65, 66
MP3.....	49	RICAS	
Partner-Assisted Scanning (DLM).....	48	Calculators or Mathematics Tools	32
Read Aloud, Repeat, Clarify General Test Directions (ACCESS)	12	RICAS ELA	
Repeat, Clarify General Test Directions (PSAT 10 and SAT)	13	Speech-to-Text	61
Student Reads Aloud to Self (ACCESS)	13	Word Prediction	66
Student Reads Aloud to Self (NGSA)	13	Sign Language.....	56
Read Aloud Selected Words	12	Specific Time of Day	14
NGSA	48	Speech-to-Text	27
Read Aloud, Repeat, Clarify General Test Directions		CoWriter Universal (RICAS ELA).....	61
ACCESS	45	DLM	59
Native Language.....	46	NGSA	60
RICAS.....	13	PSAT 10 and SAT	61
Recording Device	See Speech-to-Text	Read&Write (RICAS ELA)	61
Redirect student's attention to the test		RICAS Math.....	63
ACCESS, NGSA, RICAS	14	Spell-Checker	
Reference Sheets	14	RICAS ELA	65
Periodic Table (NGSA)	14	State-Allowed Accommodation	
Supplemental Reference Sheet for Math Test (RICAS)	33	Sign Language Response (PSAT 10 and SAT)	57
Refusing an accommodation	17	State-Allowed Accommodations	1
RICAS Calculator Policy	76	Stay on track	
Screen Reader	51, 52	PSAT 10 and SAT	65
Assistive Technology	51	Streamline Mode	
JAWS	51	NGSA	15
Scribe	39	PSAT 10 and SAT	65
ACCESS	59	Text-to-Speech	49, 52
Guidelines for Administration	78	NGSA	48
NGSA	60	Reading	68
NGSA Scribe Guidelines	80	RICAS ELA	49
PSAT 10 and SAT	61	Text-to-Speech (RICAS Math)	51
PSAT 10 and SAT Questionnaire	73	Transcription	
RICAS ELA	61	ACCESS.....	37
RICAS ELA	62	Guidelines for Transcribing RICAS Tests	79
RICAS Math	63	NGSA	43
Selecting Accommodations		Translation of General Test Directions	
English Learners	22	ACCESS, NGSA, PSAT 10 and SAT	45, 66
Separate or Alternate Test Location		PSAT 10 and SAT	47
ACCESS	53	RICAS, NGSA	46
PSAT 10 and SAT	53	Unified English Braille (UEB)	
Sign Language	54	DLM	28
General Test Directions.....	53	Unique Accommodations	17
General Test Directions (PSAT 10 and SAT).....	54	Updating IEPs or 504 Plans.....	19
General Test Directions (RICAS)	54	Word Prediction	
Guidelines for Providing the Sign Language Accommodation	74	NGSA	66
Human Signer (NGSA)	54	PSAT 10 and SAT	66
		RICAS ELA	66
		ZOOM	See Magnification