

# Rhode to Excellence



New Learning Environment Initiatives



**RIDE** Rhode Island  
Department  
of Education

November 2022

*"The State of Rhode Island is committed to providing high quality educational opportunities for all public school students. School facilities provide more than a place for instruction. The physical learning environment contributes to the successful performance of educational programs." (RIGL 16-105-1)*

## **State of Rhode Island**

Daniel McKee, *Governor*                      Sabina Matos, *Lt. Governor*  
Seth Magaziner, *Treasurer*

## **Rhode Island General Assembly**

K. Joseph Shekarchi, *Speaker of the House*  
Dominick J. Ruggerio, *President of the Senate*  
Marvin L. Abney, *Chair of House Committee on Finance*  
Ryan Pearson, *Chair of Senate Committee on Finance*

## **Council on Secondary and Elementary Education**

Patricia DiCenso - *Chair*  
Barbara S. Cottam                      Michael Almeida, Ed.D.  
Mary Barden                              Amy Beretta, Esq.  
Colleen Callahan, Ed.D.                      Karen Davis  
Jo Eva Gaines                              Marta V. Martinez

## **Rhode Island Department of Elementary and Secondary Education**

Angélica Infante-Green, *Commissioner*  
Lisa Odem-Villella, *Deputy Commissioner*      Kelvin Roldán, Ed.L.D., *Deputy Commissioner*  
Mario Carreno, ALEP, *Chief Operating Officer*

## **School Building Authority at the Rhode Island Department of Education**

Joseph da Silva, Ph.D., *School Construction Coordinator*  
Keelia Kantor, ALEP, *Educational Facility Planner*  
Joseph McPhee, *Educational Facility Planner*  
William Trimble, *School Building Authority Finance Officer*

## **PARTNER AGENCIES**

### **Division of Equity, Diversity and Inclusion**

Tomás Ávila, *Associate Director*

### **Office of the Postsecondary Commissioner**

Shannon Gilkey, Ed.D, *Commissioner*  
Amy Grzybowski, *Deputy Commissioner*      Tammy Warner, Ph.D., *Deputy Commissioner*

### **Rhode Island Office of Energy Resources**

Christopher Kearns, *Interim Commissioner*  
George Sfinarolakis, Ph.D., *Administrator of Energy Programs*  
Nathan Cleveland, *Program Services Officer, Energy Efficiency & Municipalities*



## Dear Rhode Island,

A spirit of change is taking hold in Rhode Island schools. Our state is making significant investments in public education that will have positive effects for decades. While these investments extend to all aspects of education, change is front and center in the places and spaces where our students learn.

Over the past year, the Rhode Island Department of Education (RIDE) and School Building Authority (SBA) have worked with school leaders across the state to implement exciting new programs, most notably our Facility Equity Initiative, Minority Business Enterprise Incubator program and ARTS (Art Re-engages Talent in all Students) Initiative. Our most vulnerable students are seeing major investments in their schools, new job and business opportunities are being created and the halls of our schools are alive with music, theater and visual arts.

Our guiding principle is to focus on High Impact Visual Enhancements (HIVE) projects so learners, teachers and families can see and touch the changes. We are moving well past the traditional, short-sighted expectation that projects should lead only to “warm, safe and dry” school buildings.

One of the communities benefiting is Providence. As we enter the new school year, changes are taking place across a school system that had been neglected for decades. Fresh construction at a number of schools, renovations at others, a new auditorium at Hope High School, modern media centers in every elementary school... the list goes on. The entire community is poised to benefit from these 21st century spaces.

We are now preparing to unveil the next series of statewide facility improvements. These include the creation of outdoor classrooms for every school in the state, a powerful fund to provide modern technology and furniture in existing school buildings and more money to expand our Facility Equity Initiative.



None of these changes would be possible without the leadership and full support of Governor Dan McKee and the General Assembly. On behalf of Rhode Island students, I thank them for all they have invested so far and for extending the Housing Aid bonuses that fund construction, allocating an additional \$50 million in SBA Capital Funds and passing another \$250 million school construction bond.

Rhode Island is on the road to excellence, and I invite you all to join us on this exciting journey.

A handwritten signature in black ink that reads "A. Infante-Green".

**Angélica Infante-Green**

*Commissioner of Elementary and Secondary Education*



# Spotlight On Providence

## Robust Investments Pave Way to a Brighter Future

Rhode Island is taking the next big step in the historic process of transforming the Providence Public School District (PPSD), an underfunded system suffering from decades of neglect and disrepair. The unacceptable condition of many school facilities in Providence has impeded educational opportunities for some of the state’s most vulnerable communities for far too long.

With a bold transformation plan backed by robust funding, a new era of change is underway for the state’s largest school system – one that will provide every student with a safe and modern learning environment with access to 21st century technology.

Prior to the state’s intervention spearheaded by Commissioner Angélica Infante-Green, systematic

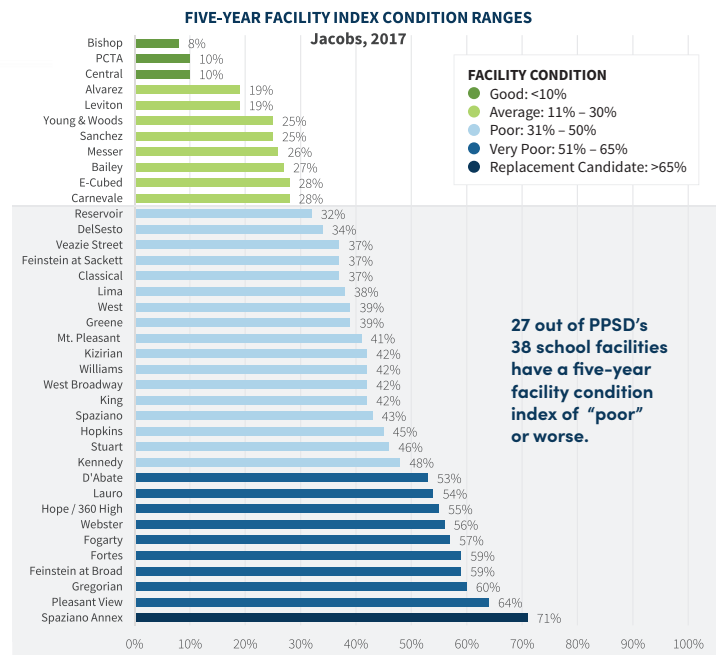
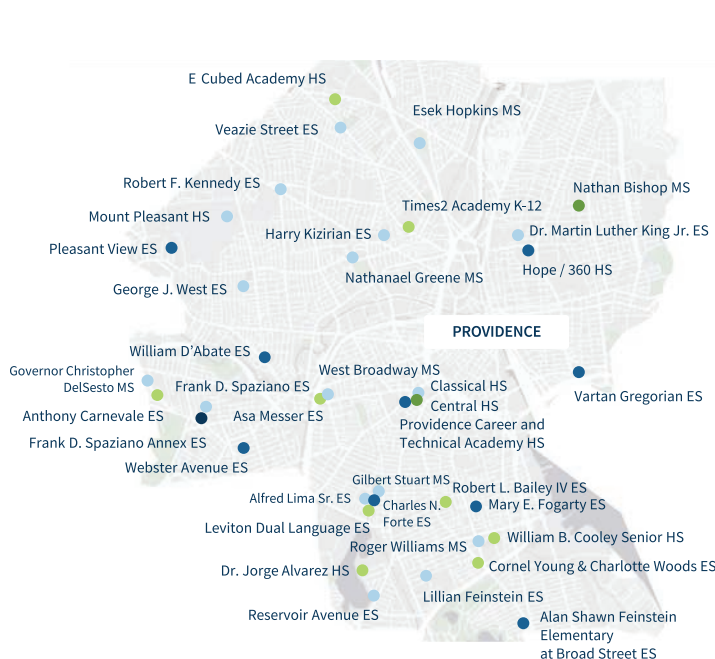
dysfunction between the city and district hampered planning and construction efforts. Compounding the challenge: the city lacked the resources to put its Capital Plan into action.

With state’s intervention in PPSD and an influx of state-backed funding, Providence is now equipped with adequate resources and the reimagined Capital Plan needed to repair and revitalize the city’s school facilities.

## TRANSFORMATIONAL CHANGE BEGINS

From the start of RIDE’s intervention in late 2019, RIDE and PPSD have worked with the City of Providence to realign the city’s original capital plan with PPSD’s Turnaround Action Plan to put

### MAJORITY OF PPSD SCHOOL FACILITIES ARE IN POOR CONDITION



the needs of students first. Utilizing \$375 million in available funding, planning and renovations are now underway throughout Providence. Additionally, voters will consider a \$125M bond on November 8, 2022 that would allow the district to embark on a \$500M facilities master plan. Projects are prioritized based on facility needs, low academic performance and community impact, among other factors.

**“With the full support of the state and city leaders, students, educators, and families, I have no doubt that we can make great strides in creating a school system that will be the envy of the entire nation. Let’s get to work.”**

**– Commissioner Infante-Green**

Major facility renovations in the progress and planning stages include Narducci Learning Center, Frank D. Spaziano Elementary School, Providence Classical High School, Pleasant View Elementary School, William D’Abate Elementary School and Hope High School.

## **Narducci Learning Center**

**110 Paul Street**

Upon completion, renovations to the Narducci Learning Center facility – which has been abandoned for over a decade – will provide PPSD with the high quality “swing space” needed during the execution of the many school renovation projects in the city. While other PPSD schools are closed for major renovations, this swing space will provide Providence students with a safe, modern learning facility. When the swing space use is finished, the new \$30.5 million Narducci Learning Center will be commissioned as a permanent school, most likely a Pre-K through 8th grade school.

**FROM THIS**



**TO THIS**

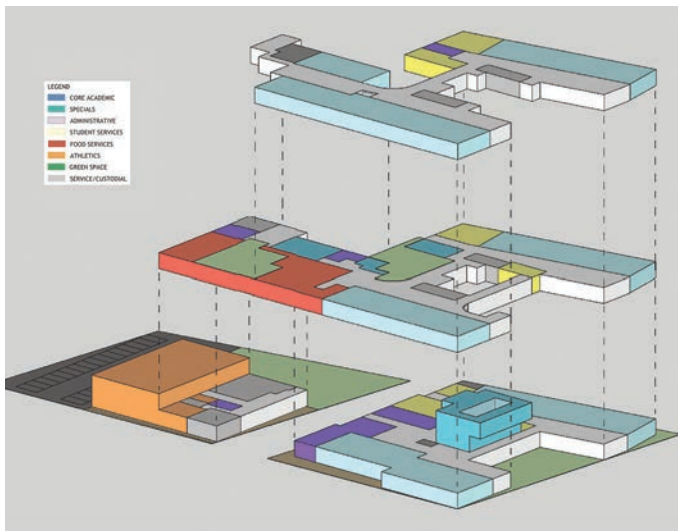


Leveraging Narducci Learning Center as swing space is a “win-win” approach that will significantly reduce construction time, costs and disruption to students and result into a new, state-of-the-art school facility for generations to come.

## Spaziano Elementary School

85 Laurel Hill Avenue

To make way for a new elementary school that will best serve the district’s needs, the existing Frank D. Spaziano Annex is scheduled for demolition and replacement. The current facility – which has one of the poorest facility condition index (FCI) ratings in the state – will be reconstructed and transformed into a state-of-the-art, dual-language Pre-K-5th grade track school complete with key educational spaces, including STEAM and special education facilities. The new \$44 million school facility will also feature shared community spaces, including a gymnasium, auditorium, media center and cafeteria.



## Classical High School

770 Westminster Street

Building off the renovations that were recently completed in the science and math wing of the complex, the school will see significant improvements that address major system deficiencies. These will include investments of over \$35 million, including many student-centric innovations and high impact visual enhancements.

FROM THIS



Current Classical High School classroom

TO THIS



Rendering for new, student-centric classroom for Classical High School's students

## Hope High School

324 Hope Street

In many ways, Hope High School became the visual symbol of the disrepair of Providence schools. That reality is changing, starting with \$21 million in major student-centric investments, including renovations to modernize the auditorium and library, that will dramatically enhance students' learning experience.

FROM THIS



Old Hope High School library

TO THIS



Library fully renovated in partnership with Brown University and designed with input from Hope students. Project completed July 2021.

FROM THIS



Current Hope High School auditorium

TO THIS



Rendering of new Hope High School auditorium

For years, the Hope High School auditorium was badly deteriorated and in urgent need of a major upgrade. Many seats are broken and taped off, while years of roof leaks severely stained the ceiling. The major renovation underway will improve the most prominent space in the building and *demonstrate to students that they matter.*

## William D'Abate Elementary School

60 Kossuth Street

William D'Abate Elementary School has been identified as the highest priority project in applying for the Facility Equity Initiative. This project proposes to create an 'Eden Park' style renovation of the school to create 21st century learning environments including shared learning spaces, new/flexible classroom furniture, and lighting improvements. Within this educational community, teachers will incorporate teaching and learning methods into curriculum units that could not be adequately delivered in a traditional classroom. Students will have the space available to work independently and socialize in proximity to each other. It is vital that students be able to function self-sufficiently and in collaborative settings to develop the real-world skills that they need to succeed and thrive in the 21st century.

## 21 Peace Street

The former St. Joseph's Hospital property located at 21 Peace Street in south Providence, which will be donated to the city in 2022 by former Providence Mayor Joseph R. Paolino Jr., will undergo an extensive transformation into a state-



Renderings of new 21 Peace Street

of-the-art learning facility. Once completed, the property will first be used as a transitional swing space for students as other schools undergo construction and renovation. It will then become the district's newest Pre-K-8th grade school facility. The \$75 million project is scheduled for completion in the fall of 2025.

**In addition to implementing the reimagined capital plan, RIDE and PPSD are taking significant steps to improve the quality of facilities throughout the district.**

## DISTRICT-WIDE FACILITY IMPROVEMENTS

In addition to implementing the reimagined capital plan, RIDE and PPSD are taking significant steps to improve the quality of facilities throughout the district, including:

- Ensuring clean and safe facilities in response to the COVID-19 pandemic.
- Increasing custodial expectations and boosting overall custodial hours by 40 percent to improve cleanliness, safety and maintenance.
- Revitalizing the Providence School Building Committee, including active parent and community representation.
- Ensuring streamlined, collaborative oversight of school facilities by PPSD and the City of Providence.



## PROPOSED REVOLVING CAPITAL FUND

With \$600+ million in facility needs and a bonding capacity of only \$240 million through Fiscal Year 2029, it is vital that PPSD have the ability to pursue additional funding streams. By leveraging other state and local resources, the approved revolving capital fund will supplement the city's bonds and "pay-as-you-go" (PayGo) allocation, quickly funding small-scale projects without incurring financing costs.

- The capital fund, which will be established with an initial \$8 million investment by the district and city, will provide Providence with an 11 to 1 return on investment.
- As projects are complete, they are eligible to receive up to 91% in housing aid reimbursement, which can be used to support additional projects.
- Leveraging housing aid, the initial \$8 million investment will fund \$54 million in projects over 10 years.

## ENERGY EFFICIENT LIGHTING UPGRADES

The Rhode Island Office of Energy Resources (OER), in partnership with RIDE and City of Providence, has announced a new LED Lighting Accelerator program to provide energy efficient lighting upgrades to every Providence public school over the next four years. Schools awarded high-efficiency LED lighting and control upgrade projects will have their local share paid for by OER, providing qualified facilities with up to 100 percent of project funding.

Beginning with twelve initial schools, these investments will help reduce energy costs, shrink carbon footprints, improve the quality of lighting in classrooms, and promote spaces conducive for 21st century learning.

## A BRIGHTER FUTURE AHEAD

Modern, safe learning spaces are critical to transforming the Providence schools. RIDE and PPSD are focusing their planning efforts on delivering the best schools for Providence students. They deserve nothing less. This concerted effort will at long last put an end to the era of complacency, crumbling schools and glaring educational inequities. Investing in Providence's school facilities will benefit students, teachers, the city of Providence and the entire state for generations to come. ★

**"The changes outlined in this report are an opportunity to rebuild and start anew. These changes will help unify our education system and create opportunities for every resident of our city. The School Board and I will continue to work to ensure that safe, modern school facilities are available in every neighborhood in Providence."**

**– Kinzel Thomas, Providence School Board President**

COMING SOON...

# The Curtain Rises

Since 1898, Hope High School has been a symbol of the city of Providence and its commitment to students' futures. Since our current building opened in 1936, our auditorium has gathered the community together and shown students, families and visitors how much we value education.

**BY THE TIME THE JOHNS HOPKINS REPORT ON PROVIDENCE PUBLIC SCHOOLS CAME OUT IN 2019, THE AUDITORIUM HAD FALLEN ON HARD TIMES.**

Chairs broken, lighting absent, paint peeling, plaster falling from the ceiling – and the entire backstage area unsafe for student use. When state leaders made a commitment to transform our schools, they made a commitment to transform our shared learning spaces.



***This fall, the curtain goes up on a new, state-of-the-art Hope High School Auditorium.***



Our new shared space will show our students, families and community that we are on the ***road to excellence***. Thanks to the investment of the State of Rhode Island and the City of Providence, Hope High School will once more be ***a symbol of possibility and promise***.

**GET A SNEAK  
PREVIEW TODAY!**

Scan the QR codes below to visit our auditorium and see the new Hope emerging all around us...



**RIDE** Rhode Island  
Department  
of Education

Providence  
Schools



# It's Time to Tell a New Story

## 21ST CENTURY MEDIA CENTERS COMING TO PROVIDENCE SCHOOLS

### LET'S TURN THE PAGE

- The average Providence elementary school is 75 years old, meaning it was built before the first satellite was launched into space and before the first personal computer was invented.
- Over recent years, school investments have been limited to projects to keep students "warm, safe and dry." That's just not good enough.

### CENTRAL TO LEARNING

Media centers are the heart of our schools, providing access to reading, project-based learning, up-to-date information and media literacy skills.

- Studies show that students who have access to a high-quality school library program perform better on standardized reading tests.
- As the largest academic space in most schools, the media center is a hub for learning and one of the few spaces accessible to all students.
- Media centers allow teachers to collaborate and access instructional technology.
- The school media center is a public space where student groups and parent associations can meet for free.



### INVESTING IN OUR STUDENTS

- Thanks to new state funding, **all Providence elementary schools are scheduled to have a 21st century media center in place by September 1, 2023.**
- That means \$9 million in new funding to support nearly **7,000 city students.**
- We will solicit input from students, teachers and families to make sure media centers meet community needs.

*It's time to tell a new story in the Providence schools – and new media centers are an exciting next chapter.*



**RIDE** Rhode Island  
Department  
of Education

Providence  
Schools



Email [Brian.Lemay@ppsd.org](mailto:Brian.Lemay@ppsd.org) for more information and with questions and suggestions for your local school.



# Spaziano Elementary School

## Demolish and Build New Providence, Rhode Island



### Project Summary

The existing Spaziano Annex is scheduled to be demolished to make way for a new elementary school that will serve the district’s needs. The new Spaziano Elementary School will be developed as a Pre-K-5, four-track school. Upon development of the bridging documents that will serve to procure a design/build contractor, the district will administer a fast-track design/build methodology to expedite the construction schedule. The new Spaziano Elementary School will provide shared community spaces, such as gymnasium, auditorium, media center and cafeteria. Key educational spaces such as Pre-K, STEAM and special educational facilities will be included.

**Angélica Infante-Green, Commissioner**  
**Dr. Javier Montañez, Superintendent**

**Jorge Elorza, Mayor**

#### Project Team

Downes Construction Company  
*Owner’s Project Manager*

O&G Industries  
*Construction Manager*

Tecton Architects  
*Architect*

#### Building Committee Members

- |                      |                   |
|----------------------|-------------------|
| Javier Montañez      | Scott Barr        |
| Joan Jackson         | Christina Gibbons |
| Zack Scott           | Brian Darrow      |
| Sal Pellerano        | Demo Roberts      |
| John Iglizzi         | Larry Mancini     |
| Melissa Hughes       | Kinzel Thomas     |
| Ramona Santos Torres |                   |

## ABOUT THE PROJECT



**\$44 million**  
Project Cost

**90,000**  
Square Feet

**August 2023**  
Completion Date

**650**  
students

Grades Pre-K-5



**\$40 million**  
Total State Support



**9%**  
Housing Aid  
Bonuses

**91%** Final  
Reimbursement Rate

**\$15 million**  
Pay-As-You-Go  
Funding



## Bonuses Realized & Valuable Outcomes

### ENERGY EFFICIENCY

- Targeting net-zero energy emissions that will reduce operating costs and minimize environmental impact.

### EDUCATIONAL ENHANCEMENTS

#### Extended Learning Commons:

- This facility is designed specifically to support a dual-language program, as well as project-based and differentiated learning.
- Extended learning commons create opportunities to bring education beyond the classroom, transforming circulation space into programmable educational space.
- Classrooms are arranged in pairs to provide opportunities for cross-collaboration.

#### Vertical Media Core:

- The Media Center incorporates STEAM to provide additional collaborative, hands-on learning opportunities.
- Small group spaces are distributed throughout the building to support breakout activities and differentiated learning.
- Access to multiple outdoor spaces and natural light speak to the benefit of design that incorporates natural elements (biophilic) on the learning environment.

### NEWER & FEWER

- Part of a two-site strategy to turn the existing Spaziano Elementary School and Annex into a new Pre-K-5 school and a first-rate middle school (grades 6-8).

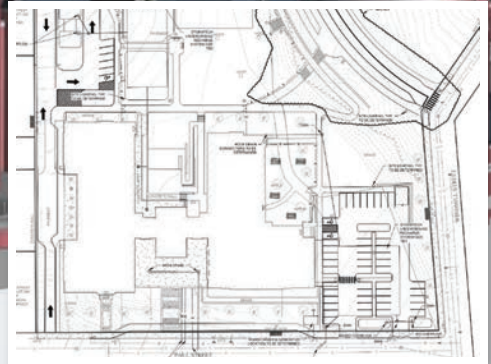
*“As a product of Providence schools, it means the world to me to see our facilities being rebuilt into the centers for learning and growth our children deserve. These advancements, from refurbished buildings to new swing spaces and even a new dual-language school, are a major step forward in the Providence turnaround effort. I can’t wait to open the doors of our new buildings to every student, family and educator in Providence!”*

*— Dr. Javier Montañez, Superintendent*



# Narducci Learning Center

## Renovation and Addition Providence, Rhode Island



## Project Summary

The project will be administered utilizing a fast-track design/build methodology. This will include, but not be limited to, the renovation of the existing Narducci Learning Center; associated sitework and traffic pattern modifications; and an addition that will provide ADA access throughout the building. Upon completion, Narducci Learning Center will provide the Providence Public School District with necessary swing space that will be vital to the execution of the many other school renovation projects in the city. The swing space will allow students to have a modern learning experience while their schools are under construction. When swing space needs are completed, Narducci Learning Center will be a permanent school.

**Angélica Infante-Green, Commissioner**

**Jorge Elorza, Mayor**

### Project Team

**Dr. Javier Montañez, Superintendent**

Downes Construction Company  
*Owner's Project Manager*

### Building Committee Members

Bacon Construction Company  
*Construction Manager*

Javier Montañez

Scott Barr

Perkins Eastman

*Architect*

Joan Jackson

Christina Gibbons

Zack Scott

Brian Darrow

Sal Pellerano

Demo Roberts

John Iglizzi

Larry Mancini

Melissa Hughes

Kinzel Thomas

Ramona Santos Torres

## ABOUT THE PROJECT



**\$ 30.5 million**  
Project Cost

**110,000**  
Square Feet

**February 2023**  
Completion Date

**760**  
students  
Grades K–8



**\$ 27.3 million**  
Total State Support



**9%**  
Housing Aid  
Bonuses

**91% Final**  
Reimbursement Rate

**\$ 20 million**  
Pay-As-You-Go  
Funding



## Bonuses Realized & Valuable Outcomes

### ADA UPDATES

- Adding an elevator to provide unrestricted access to all levels.

### EDUCATIONAL ENHANCEMENTS

- Design includes STEAM classrooms, 21st century media centers and outdoor learning spaces.

### INCREASED UTILIZATION

- Swing space is a space temporarily occupied by building users away from areas undergoing renovation. Swing space can be new space built before renovations or existing space that has already been renovated.
- In the current PPSD construction plan, swing space will be used for a number of projects. This coordination of construction projects means students and faculty from the school to be renovated move into the swing school temporarily, using it as a learning facility while their school receives the required renovations and transformation to a modern learning facility.
- Swing space offers benefits to completing major renovations instead of students continuing to attend school with construction going on around them.
- With swing space,
  - Learning is not disrupted by the noise and work of construction
  - Students are safer – no interaction with construction activities or concerns with demo and abatement activities
  - Construction activities will proceed faster in an unoccupied facility

*“Our new Capital Plan will at long last make world-class facilities a reality for students across Providence. Timing these projects to coincide with other educational improvements in the Turnaround Action Plan, communities can gain confidence and feel proud that our students are finally receiving the resources they deserve.”*

*– Melissa Hughes, PPSD School Building Committee – Family Member Representative*

# Balancing the Equation

## Rhode Island Acts to Close the Education Equity Gap

**THE EQUITY GAP HURTS US ALL:** Rhode Island's future depends on how well today's students are prepared to succeed and contribute to our state. In too many communities for too many years, there has been a wide gap between what students need and what they receive.

*Thanks to the commitment of leaders at all levels, a new **\$20 million Facilities Equity Initiative** is closing the gap.*

### THE NUMBERS TELL THE STORY

**COMMUNITIES IN NEED:** The **5** neediest districts in Rhode Island – Central Falls, Woonsocket, Pawtucket, Providence and West Warwick – account for more than **30%** of all statewide school facility needs.

**FOCUS ON STUDENTS:** These communities enroll **50%** of the state's free and reduced lunch students, **70%** of the state's multilingual learners and **40%** of all differently abled students.

**SUPPORTING OPPORTUNITY:** Thanks to a partnership with the Division of Equity, Diversity and Inclusion, projects with at least **15%** minority business enterprise utilization receive **100%** state reimbursement.

**CLIMATE FRIENDLY:** RIDE also partnered the Office of Energy Resources to ensure approved green projects receive **100%** state reimbursement.

**MORE ON THE WAY:** Governor McKee, the General Assembly and RIDE teamed up to ensure that next year's budget includes **\$50 million** to further close the equity gap across the state.



**RIDE** Rhode Island  
Department  
of Education

**READY TO CLOSE THE EQUITY GAP IN YOUR COMMUNITY?**  
Email RIDE at [SBACapitalFund@ride.ri.gov](mailto:SBACapitalFund@ride.ri.gov) today!



COMING  
ATTRACTIONS!

## RHODE ISLAND RAMPS UP ARTS INVESTMENT IN SCHOOLS

# ARTS

ART RE-ENGAGES TALENT IN ALL STUDENTS

The Rhode Island Department of Education (RIDE) is launching an innovative, \$5 million art education support effort. Under the new **ARTS Initiative**, funding is based on the number of students, and **each district or charter school will receive a grant of at least \$10,000** to support the arts in their schools *as they see fit*. Schools and districts will also be eligible to receive additional grants for the arts.

Research demonstrates that the link between involvement in the arts and engagement in school is strong and persistent. Coming out of the pandemic, RIDE is dedicated to supporting local schools as they rebuild and strengthen their arts programs. This is an opportunity for schools to connect with local artists and programs – and for students to re-connect with their schools.



*“Imagination is more important than knowledge. For knowledge is limited, whereas imagination embraces the entire world, stimulating progress, giving birth to evolution.” – ALBERT EINSTEIN*



**RIDE** Rhode Island  
Department  
of Education

Visit [www.ride.ri.gov/ARTS](http://www.ride.ri.gov/ARTS) or email [Ashley.Cullinane@ride.ri.gov](mailto:Ashley.Cullinane@ride.ri.gov) to learn more about how your schools can put their ARTS funds to work.

# MORE ARTS = MORE ENGAGEMENT + MORE STUDENT SUCCESS

During **Act 1** of the ARTS Initiative, RIDE will provide funding that touches every public school in Rhode Island, while leaving final decisions on how to use the funds in the hands of local education leaders. The funds will be allotted on a per-student basis, with each LEA receiving at least \$10,000.

## TOP RECIPIENTS

Providence . . . . .	\$694,225
Cranston . . . . .	\$328,840
Warwick . . . . .	\$261,841
Pawtucket . . . . .	\$260,527
Woonsocket . . . . .	\$181,571
East Providence . . . . .	\$161,984
Cumberland . . . . .	\$151,437

Grants can be used to purchase items such as musical instruments, art supplies and audio/visual or culinary equipment. They can also be used to create murals, add art installations, support performing arts or even an artist in residence. **Schools choose the most impactful use of funds.**



## DOUBLE FEATURE: MORE INVESTMENTS IN THE ARTS – FALL 2022

During **Act 2** of the ARTS Initiative, RIDE will leverage an incentive-based fund of at least \$500,000 to further support the arts in schools. Starting in the fall, additional funds will be awarded to schools or districts based on the following factors:

- Number of students impacted by the arts programming
- Student & community engagement
- Local artist utilization
- Minority-owned business usage
- Most creative uses of funding

RIDE will share more information on this program as it becomes available in coming months.

**Stepping Up:** RIDE is working with the philanthropic community with a goal of **doubling the \$500,000 prize pool** to support even more arts programs across the Ocean State. If you are interested in learning more or donating, please contact Ashley Cullinane at [Ashley.Cullinane@ride.ri.gov](mailto:Ashley.Cullinane@ride.ri.gov).





# Classroom Makeover

## Rhode Island invests in 21st Century learning environments

To prepare our students for lifelong success, Rhode Island is acting across the board to put students first, promote excellence in learning and build equity into all we do. We call it **Destination Excellence** – and the 21st Century Technology and Equipment Fund is one part of this effort.

### PREPARING FOR TOMORROW

21st Century learning depends on flexible, safe spaces where students can focus and create. Just as the modern workplace has transformed, the modern classroom must transform to prepare learners for an ever-changing future.

- The new 21st Century Technology and Equipment Fund will provide innovative furniture and equipment that support science, technology, engineering and math (STEM) project-based learning and career technical education (CTE).
- The program will infuse \$15 million in state dollars directly into classrooms to support teaching and learning!



### EMPOWERING COMMUNITIES & SERVING STUDENTS

- Every district and charter will be eligible for funding on a per student basis, with a minimum award of \$25,000.
- The fund will support transition from traditional desk-in-row classrooms to flexible learning spaces to better serve learners of all abilities, backgrounds and learning styles.
- To remove all barriers and meet the needs of all learners, the *Equity Boost* and *CTE Boost* will offset costs for all districts.



**RIDE** Rhode Island Department of Education

Learn more at [www.ride.ri.gov/FFE](http://www.ride.ri.gov/FFE) or email us at [SBACapitalFund@ride.ri.gov](mailto:SBACapitalFund@ride.ri.gov).



# The Power of Partnership



## RHODE ISLAND AGENCIES COMBINE FORCES TO INVEST IN THE NEXT GENERATION

**History Calls:** Rhode Island has a once-in-a-generation opportunity to invest in and support the next generation – by **building the best schools possible** for our students and by **supporting future business leaders** who will make our state competitive for decades to come.

### BUILDING FOR OUR FUTURE

- Over the next 10 years, Rhode Island will spend **\$3 billion** to build or rehab school buildings.
- 10% of that money must go to minority-owned businesses – that means **\$300 million available**.
- We don't have enough companies or workers who qualify... so we're spreading the word about job training and business skills.

**A powerful combination of Rhode Island state agencies joined forces to create the MBE (minority business enterprise) Incubator Program.** Each year more than 3,000 Rhode Island students leave high school without a plan. The MBE Incubator Program is dedicated to helping many of these students take advantage of opportunities created by our statewide investment in school construction.

### WE ARE READY TO FUEL SUCCESS

The MBE Incubator Program is offering a series of outreach initiatives to attract and prepare high school students and graduates for career success, including:

- Rhode Island Promise scholarships
- Paid apprenticeship programs
- Streamlined certification as an approved MBE
- And much more

### OUR TEAM

Participating agencies include:

- Rhode Island Department of Education (RIDE)
- Local education agencies (school districts and state-run school leaders)
- Division of Equity, Diversity and Inclusion (DEDI)
- Rhode Island Office of the Postsecondary Commissioner (RIPOC)
- Skills for Rhode Island's Future

Learn more  
at our website  
[www.ride.ri.gov/MBE](http://www.ride.ri.gov/MBE)  
or email us at  
[Tomas.Avila@doa.ri.gov](mailto:Tomas.Avila@doa.ri.gov) to  
request an information session  
at your school or other location.



**RIDE** Rhode Island  
Department  
of Education



**RI** Office of the  
Postsecondary  
Commissioner



Get Info  
Get Training

# Get Paid



Inspire others!

Looking for the next step after graduation?  
Our new program can prepare you for a **good job**,  
a **good paycheck** and a **good future**.

We have info on **SCHOLARSHIPS**, **JOB OPENINGS**,  
**APPRENTICESHIPS**, **STARTING YOUR OWN BUSINESS** & more.

It's fast.  
It's easy.

Build something that will last!

## HERE'S WHY...

- Over the next 10 years, Rhode Island will spend more than \$3 billion to build or rehab school buildings.
- 10% of that money must go to minority-owned businesses – that means \$300 million available.
- We don't have enough companies or workers who qualify... so we're spreading the word about job training and business skills.

Want to learn more? Visit us at [www.ride.ri.gov/MBE](http://www.ride.ri.gov/MBE) or email us at [Tomas.Avila@doa.ri.gov](mailto:Tomas.Avila@doa.ri.gov) to get started today.

It's waiting  
for you!

A message from the  
Rhode Island MBE  
Incubator Team



**RIDE** Rhode Island  
Department  
of Education



**RI** Office of the  
Postsecondary  
Commissioner



# Rhode Island is Turning Green... One School at a Time

## Ocean State Emerges as a National Leader on Climate-Friendly Education

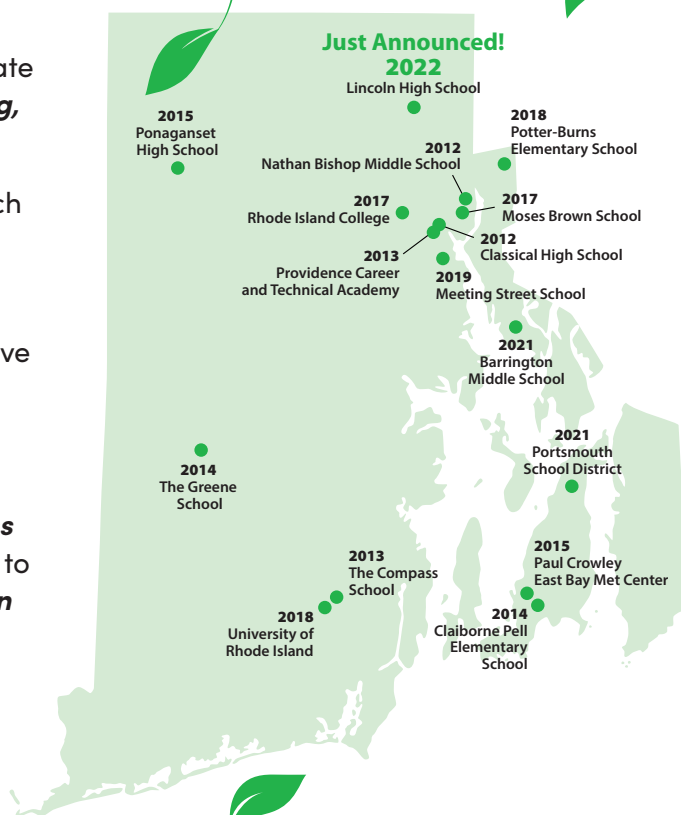
Schools that are energy-efficient and integrate climate impacts into the classroom setting **improve learning, boost student health** and **save taxpayer money**.

Since 2007, Rhode Island has taken a two-fold approach to ensure our PreK-12 students learn in schools that are safe, clean and (increasingly) environment-friendly: regulations that ensure uniformity and equity in school construction and compliance with Northeast Collaborative for High Performance Schools Protocol (NECHPS) requirements to ensure projects are built green.

- As a result, Rhode Island public schools built or renovated over the last 15 years **use at least 30% less energy and 20% less water** than buildings designed to code and have **diverted at least 50% of construction waste** from landfills.
- Each year, more Rhode Island schools earn the **Green Ribbon School** award from the U.S. Department of Education. The competitive program honors schools, districts and postsecondary institutions that stand out in their efforts to **reduce environmental impact and costs; improve the health and wellness of students and staff; and provide effective sustainability education**.

## WE'RE NUMBER ONE!

R.I. is in the **top spot** for Green Ribbon schools in the Northeast (and we hold the second spot nationwide).



## PUT YOUR SCHOOL ON THE MAP!

Contact RIDE at  
[Mario.Carreno@ride.ri.gov](mailto:Mario.Carreno@ride.ri.gov)  
to apply for your Green  
Ribbon in 2023.



**RIDE** Rhode Island  
Department  
of Education

RHODE ISLAND **RiEEA**  
Environmental Education Association

# Case Studies

Delivering Real-World Results



**R**IDE and SBA have worked closely with local education agencies (LEAs) across Rhode Island to advance new construction, renovations and other critical improvements that are creating safer, modernized learning environments for our students and educators. While there much work remains, we are proud to highlight the following projects showcasing the real-world benefits of the investments we are making in Rhode Island's public school facilities.

Utilizing state and local resources, including funding from the historic 2018 Statewide School Construction Bond, improvements are being implemented with the following guiding priorities:

**Health and Safety** – Projects that address health and safety deficiencies

**Educational Enhancements** – Projects that address educational enhancements, including Early Childhood Education and Career and Technical Education

**Replacement** – Replacement of facilities with a Facility Condition Index (FCI) of 65 percent or higher

**Newer & Fewer** – Consolidation of two or more school buildings into one school building

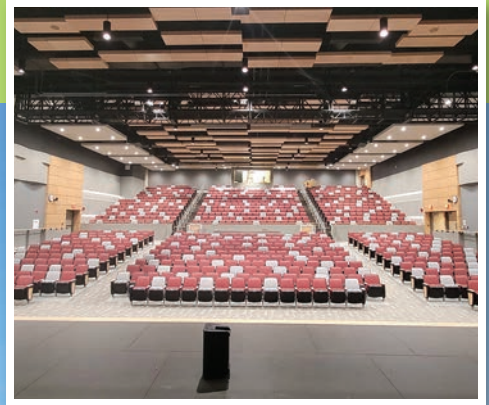
**Decrease Overcrowding** – New construction or renovation that decreases overcrowding

**Increase Utilization** – New construction or renovation that increases the efficient, functional use of school spaces



# East Providence High School

Phase 1 School Construction  
Phase 2 Athletic Fields  
East Providence, Rhode Island



## Project Summary

The new East Providence High School construction program is a culmination of a five-year effort by the entire East Providence community to transform one of the state's oldest and most impaired facilities into a modern, 21st century learning environment and community asset. After receiving RIDE approvals, the district and school building committee embarked on rapid team selection and commencement of design. Construction began in 2019. The new, state-of-the-art 306,562 sq. ft., comprehensive high school officially opened in the fall of 2021. Career technology pathways, academic space and state-of-the-art athletic and performing arts are integrated throughout the four-story building and surrounding athletic fields. Phase 2 athletic fields upgrades will be completed in the fall of 2022.

**Kathryn Crowley, Superintendent**

**Roberto L. DaSilva, Mayor**

### School Committee Members

Joel Monteiro, Chair

Jenni Azanero

Jessica Beauchaine

Max Brandle

Charles Tsonos

### Project Team

Peregrine Group, LLC in partnership  
with CGA Project Management  
*Owner's Project Manager*

Gilbane Building Company  
*Construction Manager*

Ai3 Architects  
*Architect*



## ABOUT THE PROJECT



**\$ 189.5 million**  
Project Cost

**306,562**  
Square Feet

**Fall 2021**

Phase 1 Completion Date

**Fall 2022**

Phase 2 Completion Date

**1,600**  
students  
Grades 9–12



**\$ 95.3 million**  
Total State Support



**20%**  
Housing Aid  
Bonuses

**74.4%** Final  
Reimbursement Rate

**\$ 16.5 million**  
Pay-As-You-Go  
Funding



## Bonuses Realized & Valuable Outcomes

### HEALTH & SAFETY

- The original building was classified by engineers as operating on “a wing and a prayer.”
- One failure in the 70-year old building’s electrical, HVAC or sewage system would have led to a closure of weeks or months.

### EDUCATIONAL ENHANCEMENTS

- The original building had a single science laboratory serving 1,600 students. There are now 11 science laboratories.
- Each classroom has state-of-the-art technology to enhance teaching and learning.
- All spaces are climate controlled to ensure a comfortable environment at all times.

### REPLACEMENT

- The original building was constructed in 1952 and was not conducive to modifications.
- The sewage system, which traversed the quarter-mile length of the building, was close to failing, which would have created a massive hazardous waste issue.
- The HVAC system was antiquated, was not energy efficient and lacked appropriated controls.
- The extensive windows were not energy efficient.
- The administrative offices were located for 1952 needs when there was minimal concern for security. The new building resolves all of these issues.

### NEWER & FEWER

- The savings in combining the Career & Technical Center programs with the high school involve not only finances, but also student time in moving between two buildings.
- Combining the two programs (traditional program and career & technical training) in one building will foster an integration of learning programs to benefit students.

*“The magnificent new school building has been a morale booster for the citizens of East Providence, as well as for the faculty and students. Townie Pride is a tangible East Providence characteristic, and the new building gives that characteristic a concrete image.”*

— Kathy Crowley, Superintendent



## Additions and Renovations Lincoln, Rhode Island



### Project Summary

The project, which included phased demolition, 68,000 SF of additions and renovation of 101,000 SF of the school, took place over a 4-year period. The renovation added a new main entrance, science labs, an auditorium, a library/media center, a gymnasium and dining commons, among other amenities. It included new plumbing, wiring, heating and air conditioning systems. Some classrooms were reconfigured into a smaller number of larger, more flexible spaces to allow more collaborative learning.

**Lawrence Filippelli, Ed.D., Superintendent**

**Robert Mezzanotte, Principal**

#### Building Committee Members

Arthur S. Russo, Jr.,  
Co-Chair

Julie Zito, Co-Chair

T. Joseph Almond

Michael Babbitt

Laurie Cullen

Kristine Donabedian

Lawrence Filippelli,  
Ed.D.

Michael Gagnon

Philip Gould

Kevin McNamara

John McNamee

Robert Mezzanotte

Armand Milazzo

Michael O'Connell

Bruce Ogni

Albert Ranaldi, Jr.

Mary Anne Roll

Jayson Schofield

John Ward

#### Past Members

Georgia Fortunato

James Jahnz

Lori Miller

#### Project Team

Colliers Project Leaders  
*Owner's Project Manager*

Gilbane Building Company  
*Construction Manager*

SMMA  
*Architect*

## ABOUT THE PROJECT



**\$ 60 million**  
Project Cost

 **169,000**  
Square Feet

**Fall 2021**  
Completion Date

**800**  
students  
Grades 9–12



**\$ 33.4 million**  
Total State Support



**17%**  
Housing Aid  
Bonuses

**52% Final**  
Reimbursement Rate

**\$ 4.5 million**  
Pay-As-You-Go  
Funding



## Bonuses Realized & Valuable Outcomes

### HEALTH & SAFETY

- New mechanical systems, including HVAC, electrical, fire alarm, fire protection and plumbing, for an optimal learning environment
- Improved ADA access throughout the building
- A completely renovated auditorium, including air conditioning

### EDUCATIONAL ENHANCEMENTS

- 4 brand new science lab classrooms, in addition to 4 renovated science lab classrooms
- A new 4,000 sq. foot media center
- A new program space for the TAPS (18–22 years old special education population), including an oven, cooktops, kitchen equipment, dishwasher, clothes washer and dryer
- New and enlarged spaces for Automotive and Woodworking Technology (2,200 sq. feet to 2,800 sq. feet)
- New culinary education spaces with new appliances and food preparation equipment
- New furniture throughout

### ENERGY

- Adherence to CHPS requirements for a more energy-efficient and sustainable school building

### NEWER & FEWER

- New location for the Lincoln Public Schools administrative offices
- Demolition of the original junior high school wing

*“The Lincoln Public Schools and The Lincoln School Committee are so proud of the newly renovated Lincoln High School. 21st Century learners seek learning opportunities at all levels. College and career readiness are the pathways to the future, and the newly renovated Lincoln High School will help to prepare our students with state-of-the-art technology, media centers and career and technical spaces. Thoughtful planning was given to expansion possibilities as student enrollment increases and industry demands change. The newly renovated high school supports what is most important; ‘Lincoln Lions: Our Students, Our Pride, Our Future.’”*

*— Lawrence P. Filippelli, Ed.D., Superintendent of Schools*



# Winters Elementary School

**New Construction**  
**Pawtucket, Rhode Island**



## Project Summary

This Project is a new, freestanding three-story building built at grade, with the first floor constructed on slab-on-grade, containing 100,419 gross square feet of space. The first floor is "U" shaped and contains approximately 41,421 SF, the second floor contains 30,010 SF and third level contains approximately 24,757 SF. There is a small basement space of approximately 4,421 SF below the special ed/student rooms in the southwest corner of the building. The north wing of the first floor contains scholastic offices, Pre-K and Kindergarten classrooms, a commons area, bathrooms and a special ed classroom. The west wing of the first floor contains office space, a special ed/student rooms and the cafetorium. The south wing of the first floor contains additional offices, bathrooms, the kitchen, associated storage spaces and the gymnasium. The second floor is stacked above the north and west wings of the building. This floor contains a commons space, the media center, and first, second and third grade classrooms. The third floor is stacked above the second floor and contains art/STEAM/music rooms, a commons space, offices and fourth and fifth grade classrooms.

**Cheryl McWilliams, Ed.D, Superintendent**

**Donald R. Grebien, Mayor**

### **School Committee Members**

Erin Dube, Chairwoman

Roberto H. Moreno  
Deputy Chairman

Joanne Bonollo

Gerard Charbonneau

Kimberly Grant

Joseph Knight

Stephen Larbi

### **Project Team**

Colliers Project Leaders  
*Owner's Project Manager*

Gilbane Building Company  
*Construction Manager*

SLAM  
*Architect*

## ABOUT THE PROJECT



**\$ 48.8 million**  
Project Cost

**100,419**  
Square Feet

**Fall 2022**  
Completion Date

**645**  
students

Grades Pre-K-5



**\$ 44.4 million**  
Total State Support



**9%**  
Housing Aid  
Bonuses

**91.6%** Final  
Reimbursement Rate

**\$ 30 million**  
Pay-As-You-Go  
Funding



## Bonuses Realized & Valuable Outcomes

### HEALTH & SAFETY

- Designed for optimal indoor air quality
- State-of-the-art heating & cooling systems
- Access to natural light
- Modern security and communication systems

### EDUCATIONAL ENHANCEMENTS

- Learning commons for every grade level
- STEAM room and maker space
- Dedicated art, music and media center spaces
- Recreation gym and outdoor play spaces and structures
- Dedicated teacher planning spaces on every floor
- Dedicated special education classrooms and resource rooms
- Dedicated room for community participation

### REPLACEMENT

- Replacement of an existing 60s era school

### ENERGY BONUS

- Targeting 30% better than code



*“Henry J. Winters Elementary School currently being constructed has been designed with deliberate attention to detail of the most modern environment for authentic learning. Infused in the structure of the building is the STEAM philosophy, consistent with our curriculum focus of Science, Technology, Engineering, Arts and Mathematics. This newly constructed building will create a 21st century learning environment grounded in student inquiry, problem-solving and critical thinking, all of which will bring pride for the entire school and surrounding community.”*

*— Cheryl McWilliams, Ed.D, Superintendent*



## School Consolidation Johnston, Rhode Island



## Project Summary

The Johnston School Department is embarking on an initiative to transform all of its schools, elevating the educational opportunities for every student in the district. In order to provide robust 21st century learning facilities, Johnston is restructuring and consolidating facilities from seven locations to four. The new master plan encompasses four major projects: a new Pre-K-K Early Childhood Center to be built on the current Barnes Elementary School site; a new 1st-4th elementary school to be built on land adjacent to the Senior High School and Town Recreation Center; and substantial renovations to the existing 9th-12th Senior High School and 5th-8th Ferri Middle School. This plan has been endorsed by RIDE-SBA and will be presented to the voters in a referendum this spring.

**Bernard DiLullo, Superintendent**

**Joseph M. Polisena, Mayor**

### School Committee Members

Robert LaFazia, Chair

Dawn M. Aloisio, Member

David Santilli, Member

Joseph Rotella, Member

Susan M. Mansolillo, Member

### Project Team

Colliers Project Leaders

Owner's Project Manager

TBD

Construction Manager

SLAM Collaborative

Architect

## ABOUT THE PROJECT



**\$ 215 million**  
Project Cost



**521,000**  
Square Feet

**August 2025**  
Completion Date

**3,325**  
students

Grades Pre-K–12



**\$ 124 million**  
Total State Support



**20%**  
Housing Aid  
Bonuses

**57.7%** Final  
Reimbursement Rate

**\$ 17 million**  
Pay-As-You-Go  
Funding



## Bonuses Realized & Valuable Outcomes

### NEW EARLY CHILDHOOD CENTER

- New school for 359 Pre-K-K students offering a child-centered environment bathed in natural light, with a large movement studio, multipurpose STEAM classroom/cafeteria, classrooms with age-appropriate technology and safe and varied outdoor play areas all nestled into the neighborhood.

### NEW ELEMENTARY SCHOOL

- New school for 1,100 students in grades 1–4, a secure and welcoming environment with access to outdoor play, lots of natural light and new technology. School includes gymnasium, art, music, media center and STEAM classrooms to compliment dispersed special education spaces and learning commons on land adjacent to the high school and Town Recreation Center.

### FERRI MIDDLE SCHOOL

- The school will be fully renovated, including new HVAC with air conditioning, upgraded technology, upgraded security, a face lift at the main entry, renovated science rooms, maker space and learning commons. The current Early Education Center pod will become the 5th grade academy, resulting in a 5th–8th grade facility.

### JOHNSTON SENIOR HIGH SCHOOL

- The 9th–12th grade school will be fully renovated, including new HVAC with air conditioning, full sprinkler system, upgraded technology, enhanced security and front entry improvements, renovated science rooms, improved pathways and CTE program spaces, fully renovated kitchen and cafeteria and improved student services, including nurse and guidance.

*“Our community is excited to embark on a facilities project that will touch every student in every school, from Pre-K to grade 12. The new construction at the early childhood and elementary levels will ensure that our students are exposed to an environment that is conducive to 21st century learning. The upgrades at Ferri Middle School and Johnston High School will bring these buildings to like-new condition, which will enhance learning for all. This comprehensive plan will create an equitable learning environment for all of Johnston’s students, teachers and staff.”*

— Dr. Bernard DiLullo, Superintendent



# Smithfield Elementary Schools

## School Consolidation Smithfield, Rhode Island



## Project Summary

The Smithfield School Department, with the support of the Town of Smithfield and RIDE-SBA, transformed its elementary schools to better serve its students and community. The process was guided by several overarching principles: To transform the current facilities to support 21st century education, create inclusive spaces that supported all students and to maximize RIDE reimbursement to align with the financial plan of the Town of Smithfield. After the plan was developed and approved by RIDE-SBA, the voters of Smithfield approved a bond referendum in the amount of \$45,000,000. To that end, the following design requirements were determined to be the focus of this effort: 1) The realignment of the student population from four schools into three. This would include the shifting of students from the William Winsor school to the Anna McCabe School and the shifting of all Pre-K students to the LaPerche school. 2) The construction of approximately 80,000 SF of additions to support the changing student populations and provide space to include 21st century learning environments in the three remaining schools.

### Dr. Judy Paolucci, Superintendent

#### School Committee Members

Virginia Harnois, Chair

Anthony Torregrossa,  
Vice-Chair

Rose Marie Cipriano,  
Secretary

Richard Iannitelli, Member

Benjamin Caisse, Member

### Project Team

Colliers Project Leaders  
*Owner's Project Manager*

Ahlborg Construction Corporation  
*Construction Manager*

DBVW Architects  
*Architect*



## ABOUT THE PROJECT



**\$ 45 million**  
Project Cost

**175,000**  
Square Feet

**Fall 2021**  
Completion Date

**1062**  
students  
Grades Pre-K-5



**\$ 20.5 million**  
Total State Support



**15%**  
Housing Aid  
Bonuses

**50% Final**  
Reimbursement Rate

**\$ 3.5 million**  
Pay-As-You-Go  
Funding



## Bonuses Realized & Valuable Outcomes

### MCCABE ELEMENTARY SCHOOL

- 35,000 SF addition including, but not limited to, a new gym, media center, outdoor play and learning environments, learning labs, maker space and a suite of kindergarten classrooms with bathrooms.

### LAPERCHE ELEMENTARY SCHOOL

- 30,000 SF addition including, but not limited to, a new media center, suite of Pre-K classrooms with bathrooms, art room, outdoor play and learning environments, special education administration area, learning lab and media center.

### OLD COUNTY ROAD ELEMENTARY SCHOOL

- 15,000 SF addition including, but not limited to, a new media center, secure entrance and administration area, art room, music room, elevator, nurse's office and maker space.



*"Smithfield's renovations and additions to its elementary schools did more than ensure that facilities were warm, safe and dry; the project ensured that these schools were also welcoming, flexible and inspiring places to teach and learn. Through careful oversight, construction was both on time and on budget, despite inevitable surprises that occur when floors are pulled up and walls are pulled down. The residents of the Town of Smithfield will enjoy these learning facilities, which also house gymnasiums and community spaces accessible to the entire community, for years to come."*

*— Dr. Judy Paolucci, Superintendent of Schools*



# William S. Rogers High School

## School Replacement Newport, Rhode Island



## Project Summary

A \$98.8 million project for the replacement of Rogers High School and related site improvements. Target occupancy is 755 students. The project is being administered utilizing standard design, bid, build methodology. The scope of work will include, but not be limited to, complete design and construction of an approximately 165,000 square-foot school on the existing school property, soil remediation as needed, abatement and demolition of the existing high school after the new school is built and applicable site work and landscaping. Construction is scheduled to start in the Spring of 2022, and the new building will be substantially complete by August 2024. Demo of the existing school and final site grading and landscaping will be complete by the start of school in September 2025.

### Colleen Burns-Jermain, Superintendent

#### School Committee Members

Raymond Gomes	Sandra Flowers
Rebecca Bolan	Robert Leary
Louisa Boatwright	Stephanie Winslow
James Dring	

### Project Team

Downes Construction Company  
*Owner's Project Manager*

Gilbane Building Company  
*Construction Manager*

The SLAM Collaborative  
*Architect*

## ABOUT THE PROJECT



**\$ 98.8 million**  
Project Cost



**165,000**  
Square Feet

**August 2024**  
Completion Date

**755**  
students  
Grades 9–12



**\$ 51.9 million**  
Total State Support



**17.5%**  
Housing Aid  
Bonuses

**52.5%** Final  
Reimbursement Rate

**\$ 4 million**  
Pay-As-You-Go  
Funding



## Bonuses Realized & Valuable Outcomes

### HEALTH & SAFETY

- New café kitchen and culinary kitchen upgraded to current health standards.
- Enhanced security by reducing exterior doors, installing bullet resistant glazing at entries and increasing security camera capacity throughout the building and property.
- Full sprinkler fire suppression system.
- Ability to lock down the non-public portions of the building after hours.

### EDUCATIONAL ENHANCEMENTS

- State-of-the-art equipment for career and technical education programs and educational spaces (classrooms, labs, etc.). State-of-the-art technology throughout the educational spaces.
- Learning commons providing breakout spaces in the corridors.
- Media center and café are open to each other, creating a hub for collaboration.
- Visibility into classrooms and CTE spaces for more engagement with the student population as a whole.

### REPLACEMENT

- New build will be highly efficient and smaller to maintain, durable construction, ensure ADA compliance and provide a full sprinkler fire suppression system.
- Replaces a sprawling 70-yr-old building that is hard to maintain at this stage of its useful life.

### NEWER & FEWER

- Existing building/Newport Area Career and Technical Center/ auditorium all separate in current school. New building will house a single comprehensive high school.

*“Newport is so excited to be part of the school building project initiative. The funding made available by the SBA, the legislature and Treasurer Magaziner is amazing—and the support of our voters for the bond sends a signal to all how much education means to our community! It is enabling Newport Public Schools to build state-of-the-art facilities that show our commitment and investment in our children now and for the future! Newport is proud to be part of this great program and looks forward to both ribbon-cutting ceremonies with all our community partners and leaders. We are One Newport!”*

*— Dr. Colleen Burns Jermain, Superintendent*



**RIDE** Rhode Island  
Department  
of Education