

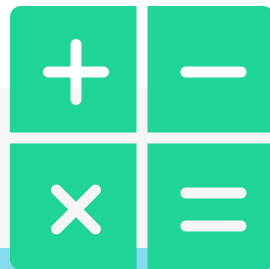
RI Intensive Math Intervention Project



RICAS Growth

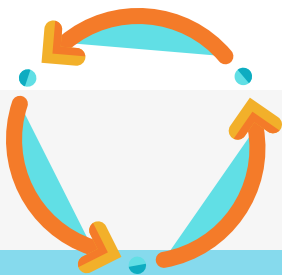
On the 2020–2021 Math grades 3–8 assessment, **11 out of 19** schools had a higher percentage of students achieving high growth compared to the state average. **13 out of 19** participating schools had a higher percentage of students achieving typical growth compared to the state average.

Implemented Practices



Evidence-based practices across the tiers:

- Increasing mathematical dialogue
- Concrete-representational-abstract
- Using manipulatives in Base 10
- Visual schematic diagramming
- "Attack" strategies for word-problem solving
- Peer-assisted learning strategies



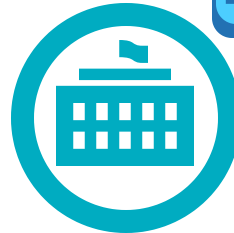
Case Study Process

83%

of case study students

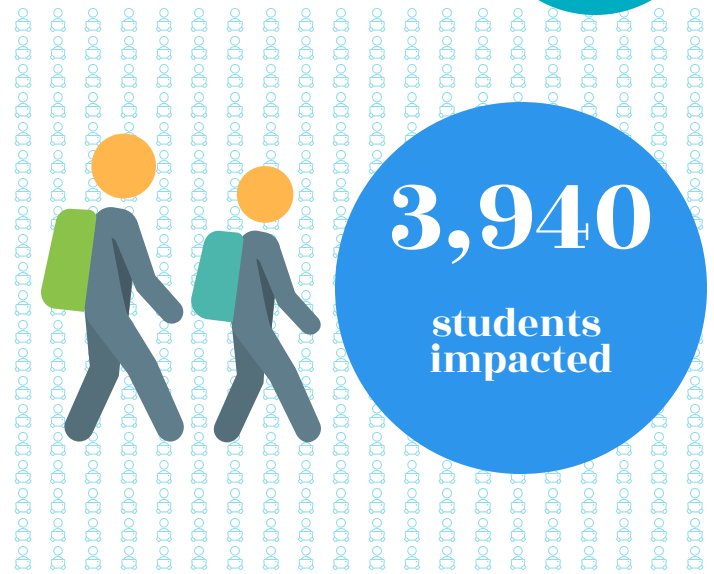
made moderate to ambitious growth toward progress monitoring goals over the course of the Math Project.

project reach



296 Participating Educators

28 Participating Schools
20 elementary, 8 middle



Growth Mindset



"[A] sense of self-confidence has pushed the student to be okay with making mistakes and process through why the mistakes occurred. Earlier in the school year, the student was self-conscious and would cry when making a mistake. Fluency has increased significantly—both in computation and verbal fluency. The student is on grade level for computation, according to the Monitoring Basic Skills Progress assessment."

