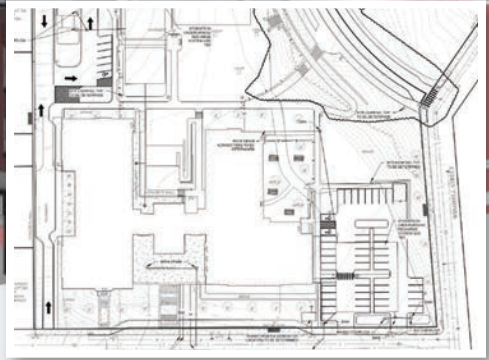




# Windmill Elementary School

## Renovation and Addition Providence, Rhode Island



### Project Summary

The project will be administered utilizing a fast-track design/build methodology. This will include, but not be limited to, the renovation of the existing Windmill Elementary School; associated sitework and traffic pattern modifications; and an addition that will provide ADA access throughout the building. Upon completion, Windmill Elementary will provide the Providence Public School District with necessary swing space that will be vital to the execution of the many other school renovation projects in the city. The swing space will allow students to have a modern learning experience while their schools are under construction. When swing space needs are completed, Windmill Elementary School will be a permanent school.

**Angélica Infante-Green, Commissioner**

**Dr. Javier Montañez, Superintendent**     **Jorge Elorza, Mayor**

#### Building Committee Members

Javier Montañez	Ramona Santos Torres
Joan Jackson	Scott Barr
Zack Scott	Christina Gibbons
Jaime Audette	Brian Darrow
John Iglizzi	Demo Roberts
Melissa Hughes	Larry Mancini

#### Project Team

Downes Construction Company  
*Owner's Project Manager*

Bacon Construction Company  
*Construction Manager*

Perkins Eastman  
*Architect*

## ABOUT THE PROJECT



**\$ 30.5 million**  
Project Cost



**110,000**  
Square Feet

**February 2023**  
Completion Date

**760**  
students  
Grades K-8



**\$ 27.3 million**  
Total State Support



**9%**  
Housing Aid  
Bonuses

**91%** Final  
Reimbursement Rate

**\$ 20 million**  
Pay-As-You-Go  
Funding



## Bonuses Realized & Valuable Outcomes

### ADA UPDATES

- Adding an elevator to provide unrestricted access to all levels

### EDUCATIONAL ENHANCEMENTS

- Design includes STEAM classrooms, 21st century media centers and outdoor learning spaces.

### INCREASED UTILIZATION

- Swing space is a space temporarily occupied by building users away from areas undergoing renovation. Swing space can be new space built before renovations or existing space that has already been renovated.
- In the current PPSD construction plan, swing space will be used for a number of projects. This coordination of construction projects means students and faculty from the school to be renovated move into the swing school temporarily, using it as a learning facility while their school receives the required renovations and transformation to a modern learning facility.
- Swing space offers benefits to completing major renovations instead of students continuing to attend school with construction going on around them.
- With swing space,
  - Learning is not disrupted by the noise and work of construction
  - Students are safer – no interaction with construction activities or concerns with demo and abatement activities
  - Construction activities will proceed faster in an unoccupied facility

*“Our new Capital Plan will at long last make world-class facilities a reality for students across Providence. Timing these projects to coincide with other educational improvements in the Turnaround Action Plan, communities can gain confidence and feel proud that our students are finally receiving the resources they deserve.”*

*– Melissa Hughes, PPSD School Building Committee – Family Member Representative*